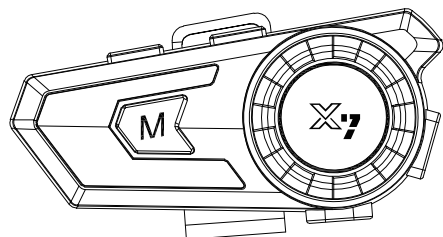
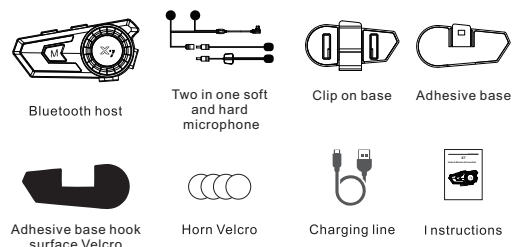


X7

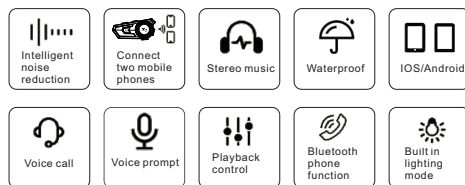
Helmet Bluetooth Headset



1. Packing list



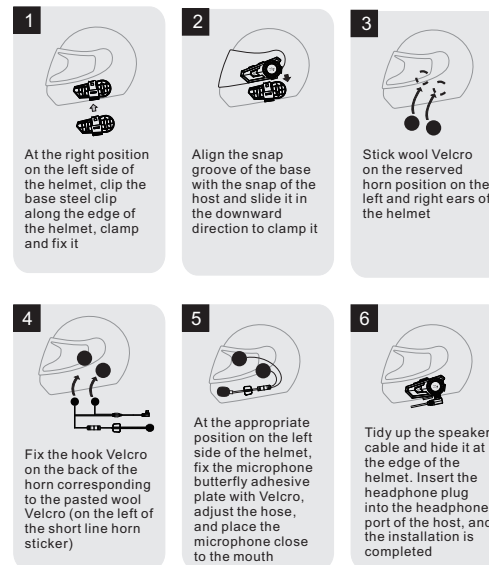
2.Function introduction



1

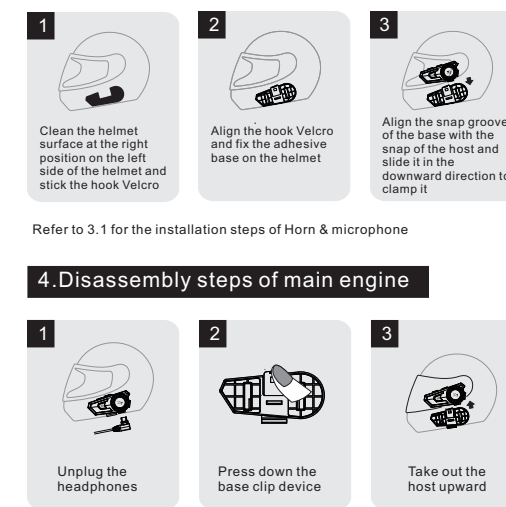
3. Installation procedure

3.1 Clip on installation



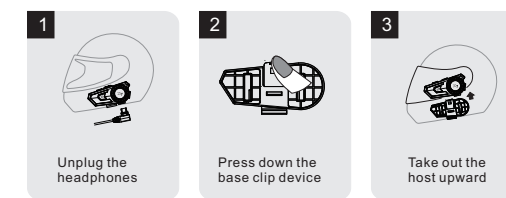
2

3.2 Adhesive installation



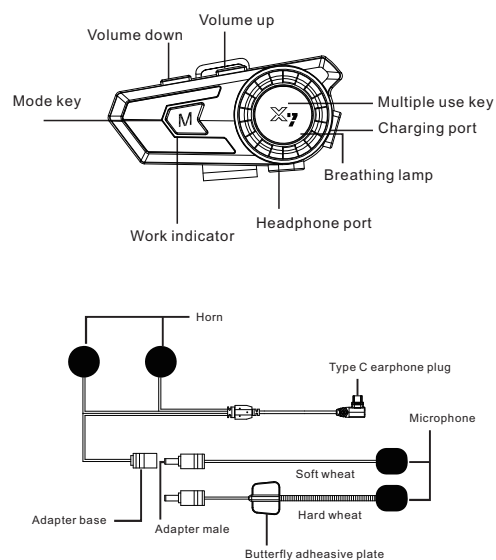
Refer to 3.1 for the installation steps of Horn & microphone

4.Disassembly steps of main engine



3

5. Product introduction



4

6.Function operation description

6.1 M key

- Light mode: the default blue light breathing cycle short press is slow flash flash close open
- Siri: after pairing with the mobile phone successfully, double-click to wake up

6.2 X7 key

- Power on: long press for 3 seconds in the off state, and when you hear "power on", the red and blue lights of key m flash alternately
- Power off: press and hold for 3 seconds when the machine is turned on. When you hear "power off", the red light of the M key will light up and go out for 1 second
- Pairing: after turning on the phone, turn on the Bluetooth function search, and find the Bluetooth Name: X7. Click Connect, and when you hear "connect successfully", the blue light of the M key flashes once every 6 seconds
- Answer a call: in the manual answer mode, short press once to answer the call. No operation is required in automatic answer mode
- Terminate call: in the call state, short press once to end the call
- Redial phone: double click to redial the last phone when the connection is successful

5

- Reject call: press for 2 seconds to reject the incoming call
- Music play / pause: press briefly under music status
- Language switching: during power on pairing (the M key is flashing red and blue alternately), double-click to switch and hear the prompt tone

6.3 Volume plus key

- Volume up: in music / call status, press and hold until you hear the "maximum volume" to end the adjustment
- Last song : Press briefly when playing music
- Automatic / manual answer switch : After the connection is successful, double-click and hear a "Dong" to indicate that the switching is successful

6.4 Volume reduction key

- Volume down : In music / call status, press and hold until you can't hear the sound and end the adjustment
- Next song : Press briefly when playing music

6.5 Charge indicator

- When charging, the X7 key lights the red light, and the red light goes out after it is full.

6

7. Parameter specification

- Bluetooth version: 5.0
- Bluetooth distance: ≥ 10 meters
- Horn unit: $\Phi 40\text{mm } 32\Omega$
- Working time: 40 hours
- Standby time: 400 hours
- Rechargeable battery: 3.7V/800mA lithium battery
- Charging time: 2 hours
- Charging interface: type C
- Charging voltage: USB 5V $\approx 1\text{A}$

8. Matters needing attention

- Do not touch the product with sharp objects to avoid scratching or damage
- Do not expose the product to open fire to avoid explosion hazard
- Do not try to disassemble the product to avoid product damage
- If the product is not used for a long time, please store it in a dry place and charge it regularly (once a month) to ensure that the product can work normally

7

FCC Warning:

This equipment has been tested and found to comply with the limits for a Class B digital device, pursuant to part 15 of the FCC Rules. These limits are designed to provide reasonable protection against harmful interference in a residential installation. This equipment generates, uses and can radiate radio frequency energy and, if not installed and used in accordance with the instructions, may cause harmful interference to radio communications. However, there is no guarantee that interference will not occur in a particular installation. If this equipment does cause harmful interference to radio or television reception, which can be determined by turning the equipment off and on, the user is encouraged to try to correct the interference by one or more of the following measures:

- Reorient or relocate the receiving antenna.
- Increase the separation between the equipment and receiver.
- Connect the equipment into an outlet on a circuit different from that to which the receiver is connected.
- Consult the dealer or an experienced radio/TV technician for help.

Caution: Any changes or modifications to this device not explicitly approved by manufacturer could void your authority to operate this equipment.

This device complies with part 15 of the FCC Rules. Operation is subject to the following two conditions:

(1) This device may not cause harmful interference, and (2) this device must accept any interference received, including interference that may cause undesired operation.

This equipment complies with FCC radiation exposure limits set forth for an uncontrolled environment. This equipment should be installed and operated with minimum distance 0cm between the radiator and your body.