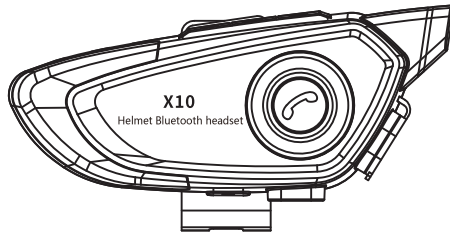
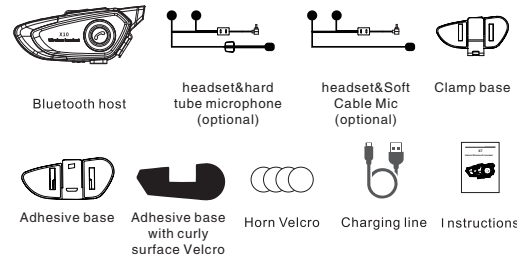


# X10

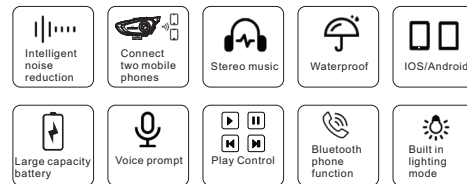
## Helmet Bluetooth headset



### 1. Packing list



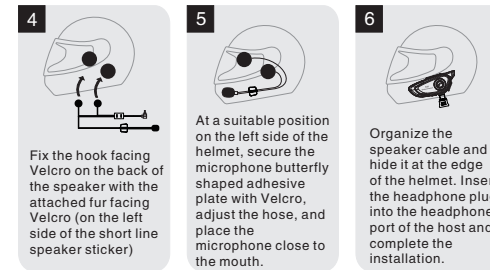
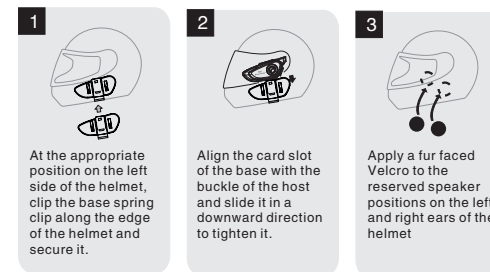
### 2. Function introduction



1

### 3. Installation steps

#### 3.1 Clamping installation



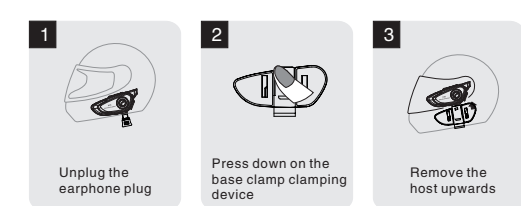
2

#### 3.2 Adhesive installation



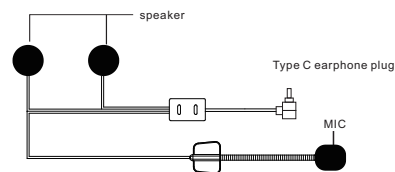
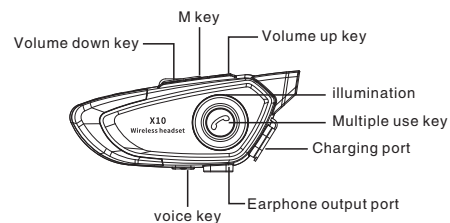
For the installation steps of speakers and microphones, refer to 3.1

### 4. Disassembly steps of main engine



3

### 5. Product introduction



4

### 6. Function operation description

#### 6.1 Multiple use key

- Power on: Press and hold for 3 seconds, hear the voice prompt "power on", and the red and blue lights of the multifunction key will flash alternately
- Power off: Press and hold for 3 seconds, and hear the voice prompt "Shut down". The multifunctional key flashes twice and the blue light turns off
- Pairing: After turning on the device, the red and blue lights of the multifunction button flash alternately. Open the Bluetooth search on the phone, find the name "X10", click to connect, and hear the voice prompt "connection successful". The blue light of the multifunction button flashes slowly, indicating that the pairing is complete.
- Chinese and English voice switching: Double click and hear a prompt sound before turning on the unpaired phone.
- Answer a call: When the call is in progress, briefly press once to answer the call. (There is no need to operate buttons in automatic answering mode)
- Terminate call: In call mode, briefly press once to end the call.
- Redial Call: Double click to redial the last call in the successfully connected state.
- Reject call: In the incoming call state, press and hold for 3 seconds to reject the call.
- Music playback: Short press in music mode.
- Music pause: Short press in music mode.

#### 6.2 M key

- illumination: Double click to turn off/on, short press to switch to lighting mode.

#### 6.3 Voice key

5

- Voice Assistant: After successful pairing, short press to wake up the phone's voice assistant
- 6.4 Volume up key
  - Volume up: In music/call mode, press and hold until you hear the "thump" sound to end the adjustment.
  - Next track: Short press once while playing music
  - Automatic/manual answer switching: After successful connection, double-click and hear a "dong" sound to indicate successful switching.
- 6.5 Volume down key
  - Volume reduction: In music/call mode, press and hold until no sound is heard, and then adjust.
  - Previous song: Short press once while playing music.
- 6.6 charge indicator
  - The multifunctional key lights up red during charging, and the red light goes out when fully charged.

6

### 7. Parameter specification

- Bluetooth version: 5.4
- Bluetooth distance:  $\geq 10$  meters
- Horn unit:  $\Phi 40\text{mm } 32\Omega$
- Working time: 40 hours (When the light effect is turned off)
- Standby time: 400 hours
- Rechargeable battery: 3.7V/800mA lithium battery
- Charging time: 2 hours
- Charging interface: Type C
- Charging voltage: USB 5V  $\approx$  1A

### 8. Matters needing attention

- Do not touch the product with sharp objects to avoid scratching or damage.
- Do not expose the product to open fire to avoid explosion hazard.
- Do not try to disassemble the product to avoid product damage.
- If the product is not used for a long time, please store it in a dry place and charge it regularly (once a month) to ensure that the product can work normally.

7

This equipment has been tested and found to comply with the limits for a Class B digital device, pursuant to Part 15 of the FCC Rules. These limits are designed to provide reasonable protection against harmful interference in a residential installation. This equipment generates uses and can radiate radio frequency energy and, if not installed and used in accordance with the instructions, may cause harmful interference to radio communications. However, there is no guarantee that interference will not occur in a particular installation. If this equipment does cause harmful interference to radio or television reception, which can be determined by turning the equipment off and on, the user is encouraged to try to correct the interference by one or more of the following measures:

- Reorient or relocate the receiving antenna.
- Increase the separation between the equipment and receiver.
- Connect the equipment into an outlet on a circuit different from that to which the receiver is connected.
- Consult the dealer or an experienced radio/TV technician for help.

This device complies with part 15 of the FCC Rules. Operation is subject to the following two conditions: (1) This device may not cause harmful interference, and (2) this device must accept any interference received, including interference that may cause undesired operation.

Changes or modifications not expressly approved by the party responsible for compliance could void the user's authority to operate the equipment.

The device has been evaluated to meet general RF exposure requirement. The device can be used in portable exposure condition without restriction.