

# G916T printed antenna specification

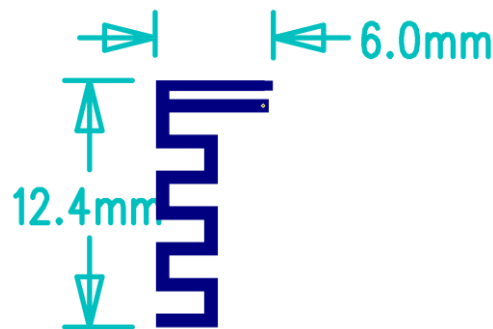
## 1. Design indicators:

frequency band	2.400~2.500G Hz
Antenna radiation efficiency (excluding port loss)	>60%
gain	2.6dBi
insulation	<-10dB

## 2. Antenna design specifications

Considering the product use environment and design limitations, an approximate omnidirectional plane IFA antenna is adopted. And performed the modeling simulations based on the HFSS.

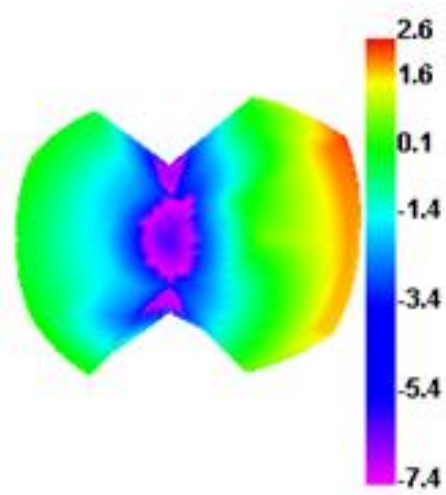
### 1. design specification



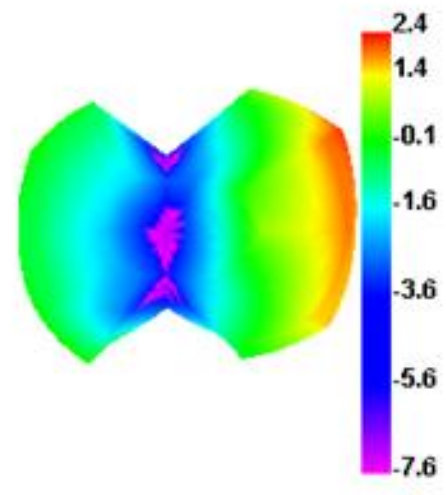
1 Efficiency/Gain- WIFI/BT

BAND	WIFI/BT			
Freq.[MHZ]	2400	2450	2500	
Eff.[%]	56.78	55.95	55.56	
Gain [dBi]	2.6	2.4	2.1	

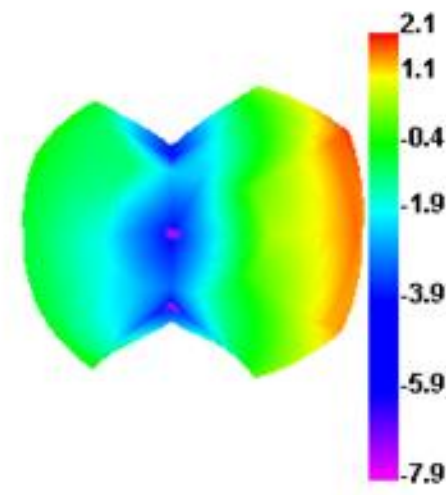
2400.000MHz



2450.000MHz



2500.000MHz



公司名称：深圳市睿达永利科技有限公司  
Shenzhen Ruida Yongli Technology Co. , Ltd.  
公司地址：深圳市龙岗区宝龙街道同乐社区南同大道 5 号（锦龙二路 15 号）B 栋厂房三楼  
3rd Floor, Factory Building B, No. 5 Nantong Avenue, Tongle Community, Baolong Street,  
LonggangDistrict, Shenzhen