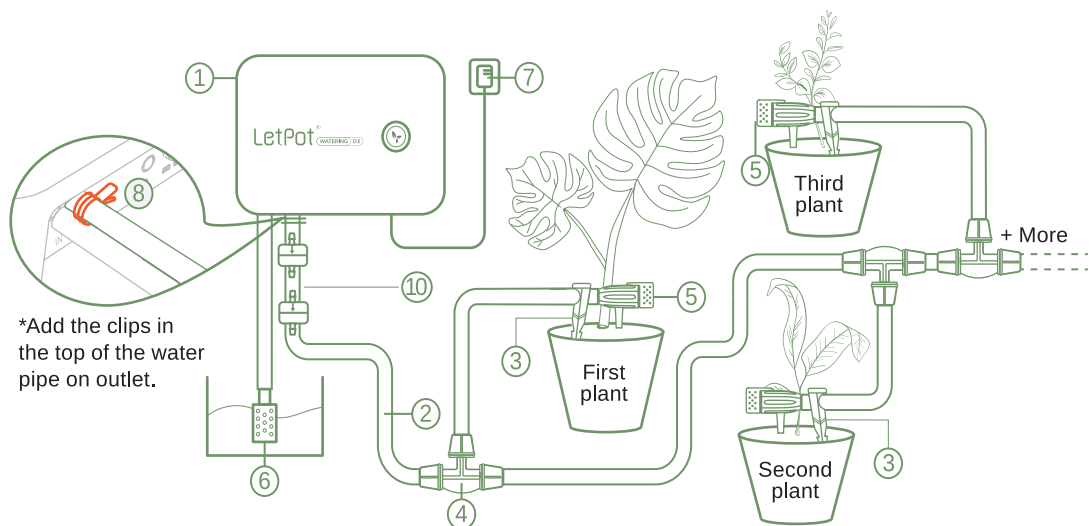
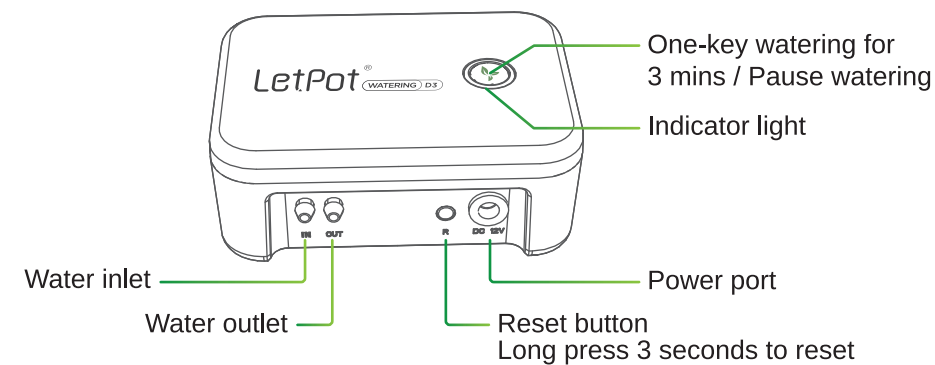
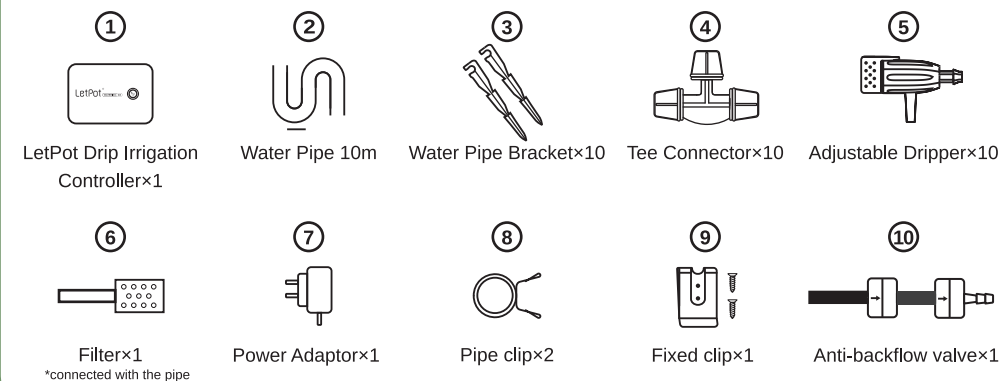


Automatic Watering System User Manual

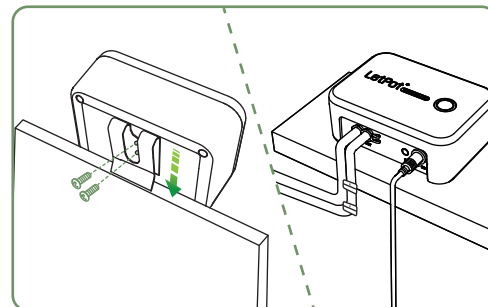


WHAT'S IN THE BOX



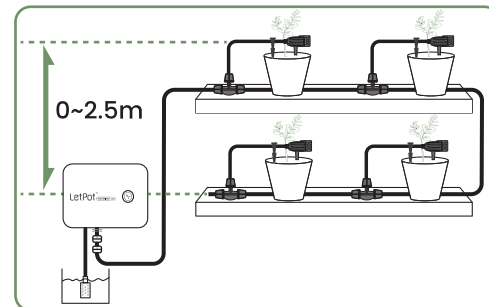
INSTALLATION STEPS

/ 02

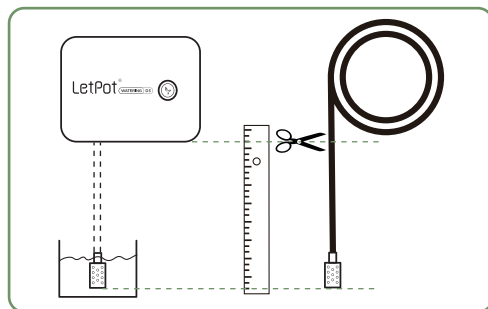


1. Secure the LetPot controller ① in a suitable position. You can use a metal fixed clip ⑨ to secure it or place it on a flat surface.

*PS: The rubber plug behind the dripper can be removed if necessary.

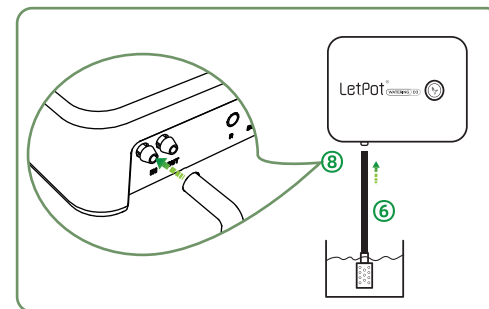


2. Ensure that the LetPot controller ① is positioned higher than the water storage container, and the height difference between the plants and the LetPot controller should not exceed 2.5 meters.

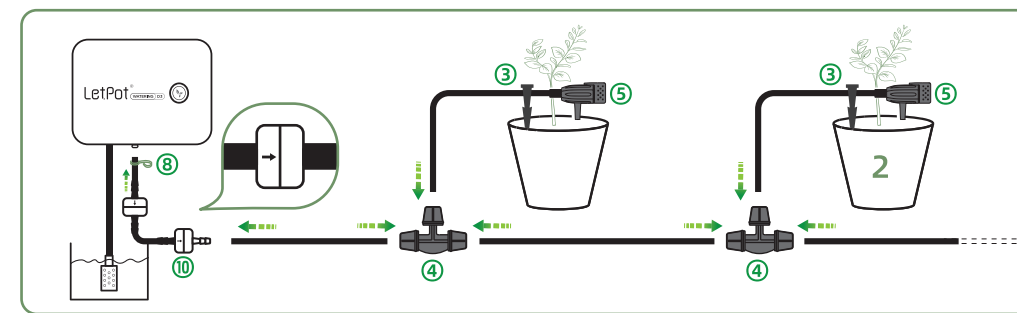


3. Measure the distance between the LetPot controller ① and the water storage container, and cut a suitable length of water pipe.

*PS: If the water pipe is too hard to plug in, you can soak it in warm water at 70 degrees Celsius or use a hairdryer to heat it before connecting the filter and dripper.

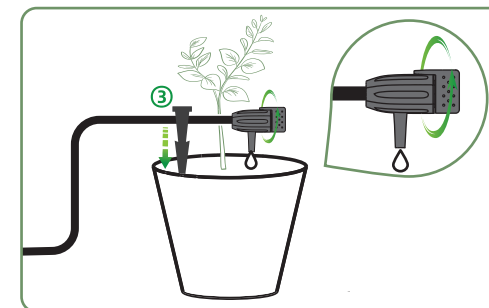


4. Insert one end of the water pipe into the "IN" water inlet below the LetPot controller, and place the other end of the filter ⑥ in the water storage container. (Note: Ensure that the filter is submerged in the water in the storage container.)

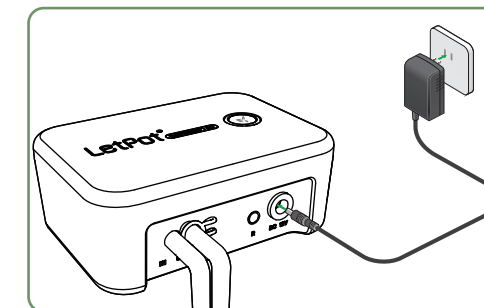


5. Connect the ⑩ anti-backflow valve according to the arrow direction with the "OUT" water outlet of the controller first, and use a pipe clip ⑧ to secure the water pipe in the "OUT" port. Then measure the distance between the LetPot controller and the first plant, and cut suitable lengths of water pipe to connect the tee connector ④ then twist and tighten the connection.

Cut another section of water pipe, as shown in the image, and connect it to the adjustable dripper ⑤, securing the dripper in the pot using the water pipe bracket ③. Use the remaining end of the tee connector to connect the new water pipe and remaining plants.



6. Once all the plants are connected, and before plugging in the power and setting up, ensure that the drippers are in the open position. Adjust the water flow by rotating the dripper to halfway open. (Note: The last pot only needs to be connected to the adjustable dripper ⑤ and does not require a new tee connector ④).



7. Plug in the power, and the green light will flash, indicating that the power is functioning correctly. Proceed to the LetPot app settings for connection.

HOW TO FIND AND INSTALL LETPOT APP

/ 03

1. Install LetPot app

1.1 You can scan this QR code or directly search LetPot on Apple store or Google play.

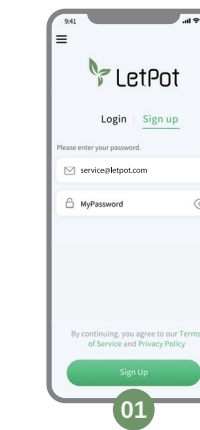
1.2 Open the LetPot App and follow the guidelines below to setup the network.



NOTE

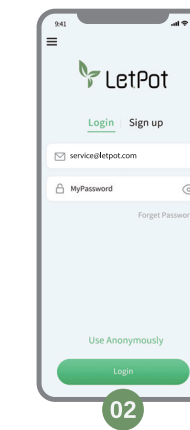
The App may request permission on your phone to enable some free functions like Plant Diary or Customer Service for picture uploading and recording. All data is protect by our privacy policy on the website.

2. Sign up and login



1. Enter your email address
2. Click to get a Verification Code
3. Check your email Inbox (or Spam) and enter the code to continue
4. Enter your password to sign up

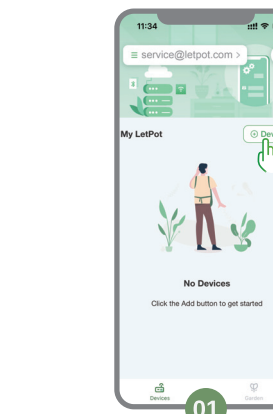
Note: If you haven't received the verification code, please contact service@letpot.com for help.



1. Enter your email address and password to login

Note: If you forget your password, click "Forget Password" and you will receive a Verification Code to reset.

3. Connect your device to Bluetooth mode



Click the [Add Device] button on the top right corner in App home page.



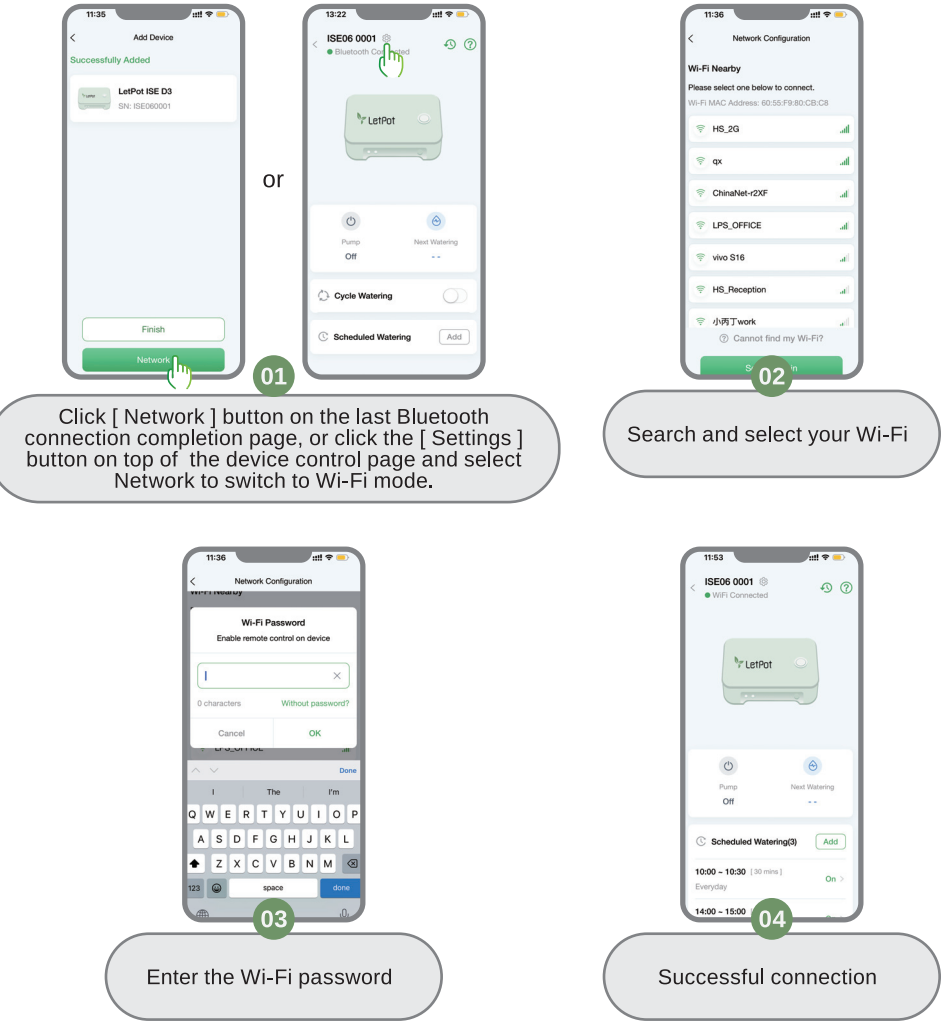
Choose ISED3 device founded on the list.



Keep your phone close to the device and wait for connection.

The LetPot drip irrigation system supports two control modes: Bluetooth and Wi-Fi network. If you only want to set up a watering schedule without the need for remote control, you can use the Bluetooth mode and click [Finish] button. Once you have configured the settings, your device will automatically save the parameters and execute the schedule even in the Bluetooth mode.

4. If you want to switch to Wi-Fi network mode, please follow the steps below to set up.



If you are unable to successfully connect to the Wi-Fi, please check the following issues:

A. Ensure that you have entered the correct Wi-Fi password. Check if the password entered in the input field is accurate, including letter case, password length, etc.

B. Consult your router service provider to determine if your network combines both 5GHz and 2.4GHz frequencies. If it does, ask them to split your Wi-Fi into two separate SSIDs with different passwords. This will ensure that the device connects to the 2.4GHz Wi-Fi.

FAQ / 04

1.The device does not work when plugging in the power supply.

- Check if your socket has power.
- Ensure that the DC plug (1) is securely connected to the device's power.

2.Bluetooth does not connect to the device.

- Bring your phone closer to the device.
- Check the green light (2). If it is constantly lit, it means another phone is connected. Disconnect that connection or reboot the device.

3.The device fails to connect to the Wi-Fi.

- Check if your Wi-Fi is operating on the 2.4G frequency.
- Verify that you have entered the correct name and password for your Wi-Fi.
- Try rebooting the device and router, then attempt the connection again.
- If the LED of LetPot is blinking in red, it means the device cannot reach the Wi-Fi router. You may need to configure a stronger Wi-Fi in the settings.
- Ensure that your phone's network is stable. Check if your phone's network is turned on and properly connected. If the issue persists, exit the LetPot app completely and reopen it to retry.

4.The red light is solid on.

- Check if there is a lack of water.
- Ensure that the water line is above the filter.

5.The water pipe is being pushed out or leaking while watering.

- Check and Open the valve of each Dripper before connecting to the power supply.
- When linking 1-2 drippers, adjust the valve to the maximum to balance the water pressure due to the high pump pressure. Alternatively, you can use a tee connector to separately connect a water pipe and place it in the water tank. This allows excess water to flow back into the tank, maintaining water pressure balance.
- Check if the clips at the inlet and outlet are tightly secured.

6.Can the system run liquid nutrients?

- The drip irrigation system can pump liquid nutrients. However, to prolong the lifespan of the pump, it is recommended to flush the residual nutrients in the pipeline by drawing clean water after a period of time. Nutrients can produce salt after evaporation, and rinsing helps prevent buildup.

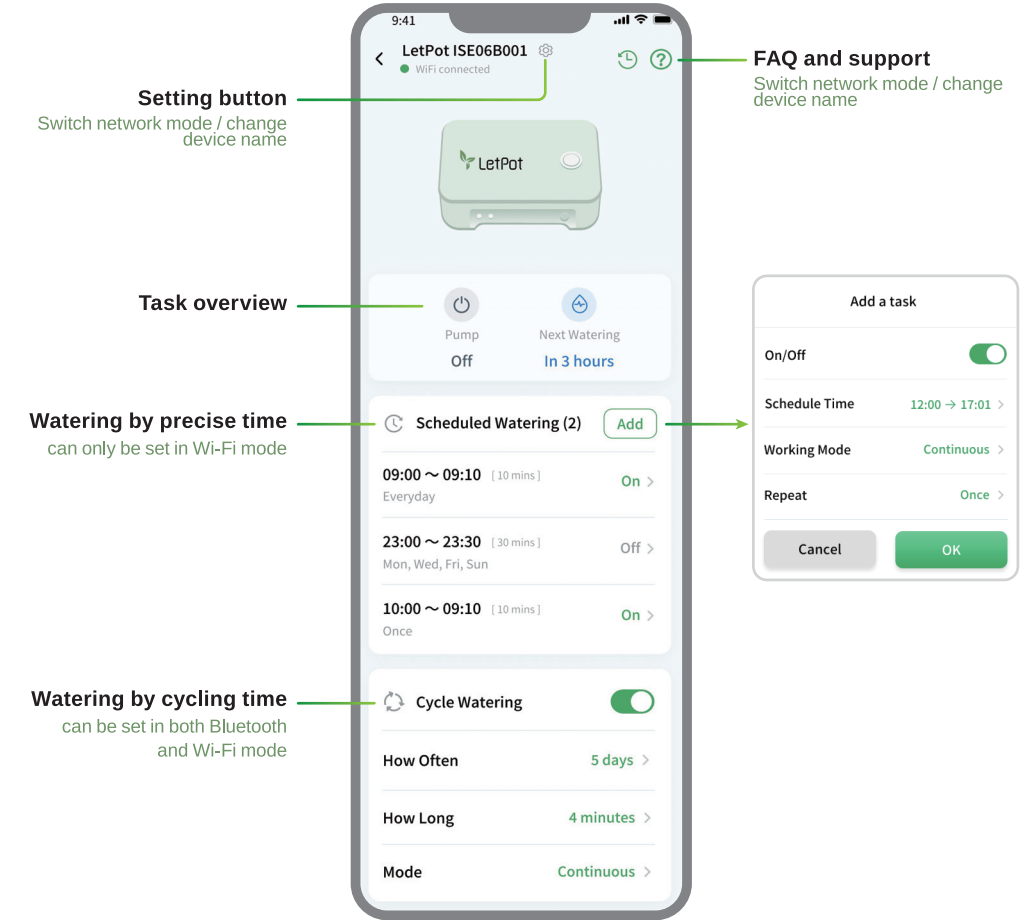
7.How to make the device water immediately.

- After setting the parameters in the app, the device will start watering immediately.
- To initiate immediate watering, short press the logo button, and the device will water for 3 minutes automatically. Press the button again to stop.

LED STATUS / 05

- Green LED flashing**
The device is working normally.
- Red LED always on**
The water tank might lack of water.
- Green LED always on**
The device is connecting with bluetooth.
- Red LED flashing**
The network is abnormal during remote connection.

DEVICE CONTROL PAGE ON THE APP / 06



CUSTOMER SERVICE / 07

Hey there! At LetPot, we're always here for you. Whether you're having trouble with our products, need help with gardening tips, or just want to vent about life—we've got your back (and your product!).

And hey, if our customer service team doesn't solve your concerns, don't sweat it! You can always hit up our marketing manager (aka User friendly manager), Rex. He's like the Batman of LetPot—always ready to swoop in and save the day. Shoot him an email, and he'll make sure your troubles disappear faster than the light speed!

Customer service: service@letpot.com hello@letpot.com Exclusive manager service: rex@letpot.com

JOIN OUR COMMUNITY / 08

Where we share green lifestyle together

We believe, planting should be simple, technology and innovation should improve the gardening experience, and the green harvest should belong to everyone.

Come join LetPot's group to engage with other green thumbs, or find us through the live chat for better after-sale service, to build a fun and trustworthy smart gardening brand with us.

#letpot #letspotit #letpothydroponic



FCC Warning:

This equipment has been tested and found to comply with the limits for a Class B digital device, pursuant to part 15 of the FCC Rules. These limits are designed to provide reasonable protection against harmful interference in a residential installation. This equipment generates, uses and can radiate radio frequency energy and, if not installed and used in accordance with the instructions, may cause harmful interference to radio communications. However, there is no guarantee that interference will not occur in a particular installation. If this equipment does cause harmful interference to radio or television reception, which can be determined by turning the equipment off and on, the user is encouraged to try to correct the interference by one or more of the following measures:

- Reorient or relocate the receiving antenna.
- Increase the separation between the equipment and receiver.
- Connect the equipment into an outlet on a circuit different from that to which the receiver is connected.
- Consult the dealer or an experienced radio/TV technician for help.

Caution: Any changes or modifications to this device not explicitly approved by manufacturer could void your authority to operate this equipment.

This device complies with part 15 of the FCC Rules. Operation is subject to the following two conditions:

(1) This device may not cause harmful interference, and (2) this device must accept any interference received, including interference that may cause undesired operation.

This equipment complies with FCC radiation exposure limits set forth for an uncontrolled environment. This equipment should be installed and operated with minimum distance 20cm between the radiator and your body.