

LED intelligent integrated control power supply

Specifications

1. Overview: This product is widely used home, hotel, KTV parties, gatherings, and other indoor decorations where music is present. It instantly transforms the atmosphere into a more lively one, bringing you an exciting moment. It adopts advanced control chips with WIFI and Bluetooth, which can be used to control various LED lights, light strips, and modules with low-v output of DC12V and DC24V, featuring easy wiring and simple usage. The brightness can be adjusted remotely, and various dynamic lighting effects and atmosphere effects can be selected using the 23-key 2.4G wireless RF remote control. Additionally, it can be controlled by a sound induction controller high automatic gain and high sensitivity. The audio controller senses external sounds, and after connecting to the light strip, it automatically adjusts the light rhythm and dynamic mode of light strip according to the volume of the music in the environment, synchronizing with the music to create corresponding jumping rhythms and running rhythms. The remote control distance is, with dual control methods, making operation convenient and simple. The sound control has high sensitivity and accurate rhythm, being a unique patent solution in the market



I. Features:

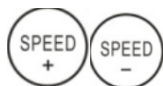
1. Equipped with a high-end RF2.4G wireless remote control, with a distance of up to 10-20M, sensitive and user-friendly operation, simple and convenient wiring; comes with smartphone intelligent APP control function.
2. Supports customization of common-line or dual-line LED driver ICs on the market;
3. Comes with over 120 different pattern effects, a dazzling and dynamic color controller;
- 4 AC input voltage: 85-265V universal
4. Output voltage: DC24V, operating current: < 10 mA maximum power 3A
5. Operating temperature: -20°C—60°C
6. Can support up to 400 pixel points
7. The power supply has anti-reverse polarity protection.
9. Signal mode: can penetrate walls 10. Comes with 8 different music mode functions

II. Remote Control Usage Instructions:

This remote control has a total of 23 buttons:

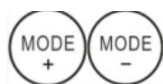


: In any state, pressing it can turn off and on the controller.



: Pressing this key in Dynamic Mode allows for dynamic mode speed adjustment with and -

options, totaling 10 levels. In Music Rhythm, it can adjust the sensitivity of the rhythm.◦



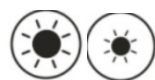
: Pressing this key while powered on switches between 121 dynamic mode effects and 20 static

colors.



: Press this key in the on state to automatically cycle through all the

pattern effects.



: Press this key to adjust the brightness in 10 levels from dim to bright

while the device is powered on.



: 166/2000

Press this button 5 times within 10 seconds before powering on to pair the remote control with the receiver

one-to-one. The light will once to indicate successful pairing. The clear code function operates in the same

way, and after the code is cleared, all identical remotes can be used, which known as the universal code

function.



: Press and hold the key for 6 times in the on state, it will light up in white when setting the RGB line

sequence, for, press the red key until it turns red, press the green key until it turns green, and press the blue key

until it turns blue. After setting, the off key to save and turn it on. When setting the number of dots, it is also to press and hold the key for 6 times in the state, it will light up in white. After the white light is on, press the SPEED +/- keys to increase or decrease the number of dots one by one then press the MODE +/- keys to increase the number of dots by three. Increase the number of dots to what you need, then turn it off to save and it on to use.



Pressing this key while powered on is: Static Red Static Green Static Blue Static Yellow COLOR Static Color Plus COLOR-Static Color Min.



Pressing this key in the on state is the music mode plus and minus key, offering a total of 8 different music effects



: Pressing this key while powered on sets the timer for 1 hour, 2 hours, or 3 hours.

Support IC : WS2811 .WS2812 . 6812 .1903 ... etc. IC, please specify the IC model when ordering.

6:APP(TuyaSmart)Connectioninstructionsand

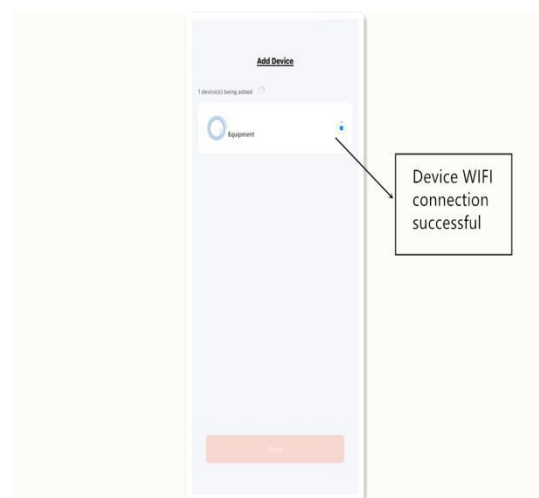
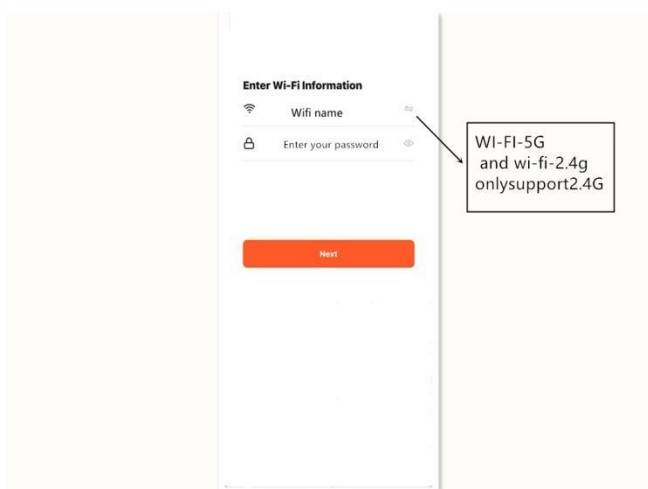
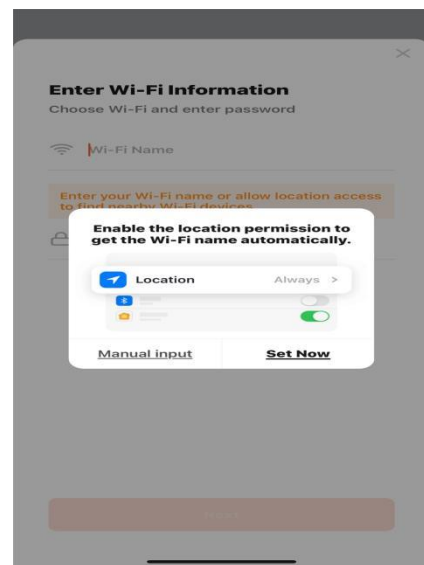
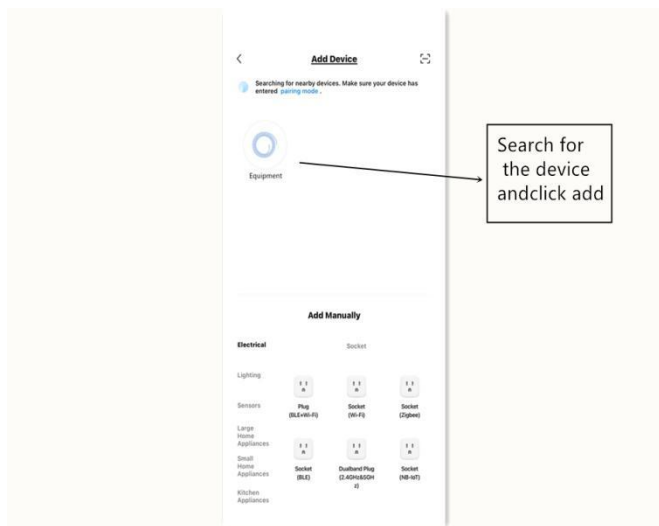
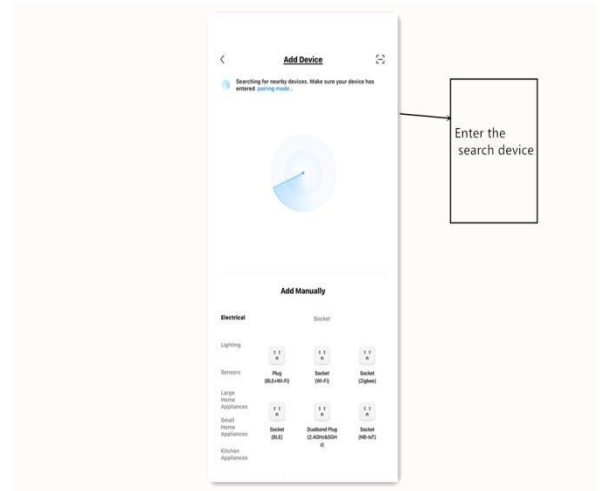
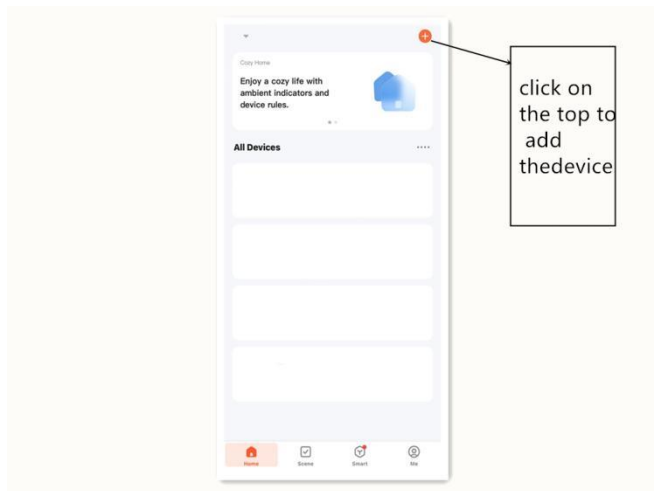
downloadQRcode

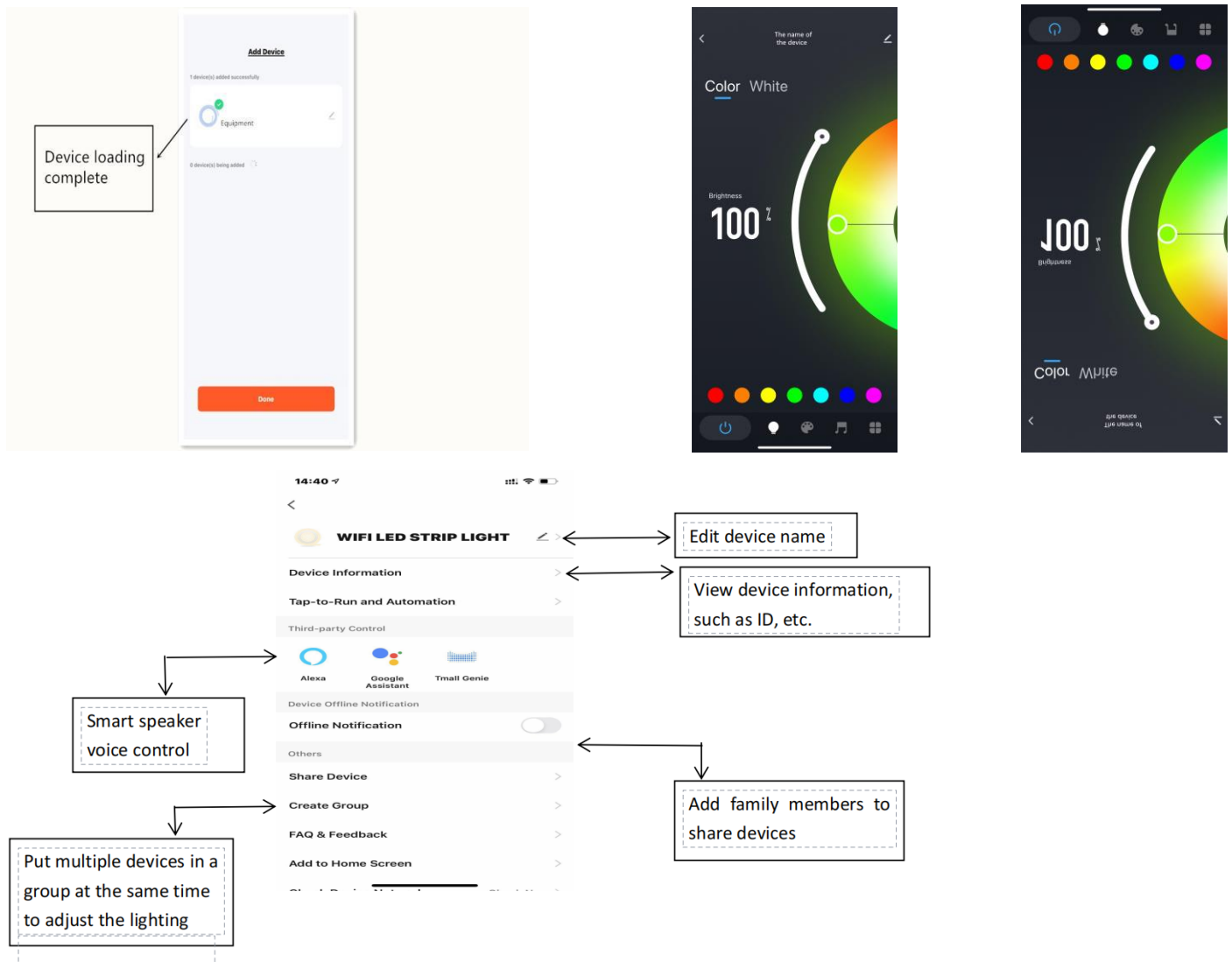


1: There are two ways to get into the distribution network. 1, UNPLUG 5 times the lights will prompt flashing into the distribution network. 2, long press remote control boot key about 5seconds light will prompt flashing into the distribution network.

2: After entering the distribution network mobile phone scan code download APP,
download and install the completed account into the APP login.

3: Click on the top to add the device.





FCC WARNING

This device complies with part 15 of the FCC Rules. Operation is subject to the following two conditions: (1) this device may not cause harmful interference, and (2) this device must accept any interference received, including interference that may cause undesired operation.

Any changes or modifications not expressly approved by the party responsible for compliance could void the user's authority to operate the equipment.

NOTE: This equipment has been tested and found to comply with the limits for a Class B digital device, pursuant to Part 15 of the FCC Rules. These limits are designed to provide reasonable protection against harmful interference in a residential installation. This equipment generates, uses and can radiate radio frequency energy and, if not installed and used in accordance with the instructions, may cause harmful interference to radio communications.

However, there is no guarantee that interference will not occur in a particular installation. If this equipment does cause harmful interference to radio or television reception, which can be determined by turning the equipment off and on, the user is encouraged to try to correct the interference by one or more of the following measures:

- Reorient or relocate the receiving antenna.
- Increase the separation between the equipment and receiver.

- Connect the equipment into an outlet on a circuit different from that to which the receiver is connected.
- Consult the dealer or an experienced radio/TV technician for help.

To maintain compliance with FCC's RF Exposure guidelines, This equipment should be installed and operated with minimum 20cm distance between the radiator and your body: Use only the supplied antenna.