

RGBWW Mood Tube Light

TL-150 User Guide

Free to download on Apple App

Store or Google Play

Store ,search " Synkitt ".

Operating environment:

IOS12.0 and above or

Android 5.2 and above



Or Scan :

Function manual



- 1: Battery indicator light: Below 25%,please charge in time.
- 2: Microphone:There are two microphones that work in APP mode and remote mode.
- 3: "+" increases the lighting effect/brightness/speed.Each short press increases one unit.
- 4: "-"decreases the lighting effect/brightness/speed.Each short press decreases one unit.
- 5: The lighting effect button.Pressing shortly selects the current lighting effect (not brightness/speed).If in the music rhythm mode,pressing "+" or "-" can select about 51 different lighting effects available in the music rhythm mode .If in normal mode,pressing "+" or "-" can select about 515 different lighting effects.
- 6: The speed selection button.Pressing shortly (not for lighting effect/brightness)enables adjusting the running speed of the current mode's lighting with "+" or "-".The fixed color remains unchanged.
- 7: The RGBW color switching button: Pressing shortly cycles to a variety of monochrome such as red,yellow, green,cyan,blue,purple,cool white(6500K),warm white (2700K),neutral white(4000K) etc.
- 8: The brightness selection button.Pressing shortly (not for lighting effect/speed) enables adjusting the brightness of the current mode's lighting with "+" or "-".
- 9: The music rhythm mode and normal mode switching button.Pressing shortly cycles between the two modes.
- 10: The power on/off button : Long press for more than 1 second to turn on/off the light. The light will automatically return to the lighting effect and mode before it is turned off when turned on again.Pressing shortly cycles between BT APP mode and 2.4G remote control mode.
- 11: When it enter the BT APP control mode, the indicator light will keep on blue.
- 12: When it enter 2.4G remote control mode, the indicator light will keep on green.
- 13: Charging port: Please use the matching 12.6V/2A charger, using other chargers will damage the product.

Remote controller

Power on

Normal mode:short press AUTO into the automatic mode.After finishing one light effect.

515 kinds normal light effect, 51 kinds music rhythm light effect
M+: light effect+
M-: light effect-

Multilevels speed adjust
S+:speed+
S-: speed-

Monochrome display,press these buttons,tube light displays its corresponding colors.

Long press for 3s, the remote controller can match one or more tube lights that have been turned on, after successful matching, the tube lights will flash three times, the remote controller can only control the matched tube lights.

Short press to tube microphone music rhythm mode, music rhythm mode is 3 minutes automatic to the next light effect ,long press 3s to exit tube microphone music rhythm mode.

Short press to turn off the light, the tube light will enter the dormant state and the bottom of the tube light will slowly flash green light. If you need to reduce power consumption, please turn off the power button at the bottom of tube light

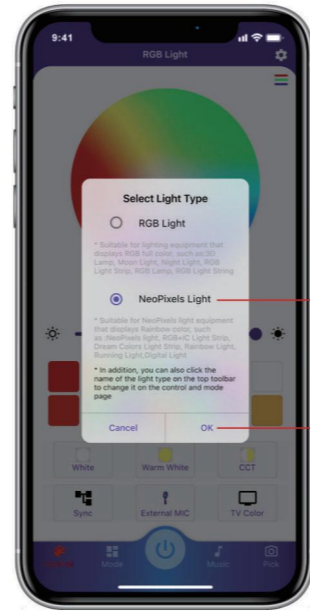
20 levels brightness+
20 levels brightness-

Long press 3s to release the matching of remote control and tube light ,and restore the use of all remote controls , after restoring successfully, the tube light will flash once.

Specifications

Name	RGBWW Mood Tube Light	Model	TL-150
Battery	11.1v 4800mAh	Input	12.6V/2A
Charging Time	3-4hours	Working Environment	Indoor/outdoor
Operating Temperature	0-40℃	Storage Temperature	-10-50℃
Power	30w	Size	150*4cm
Endurance time	3-5hours	Tip: Lower brightness extends battery life.	

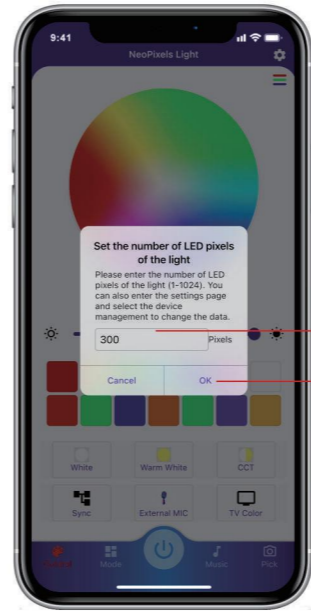
Page 1



Select "NeoPixels Light"

Then click "OK"

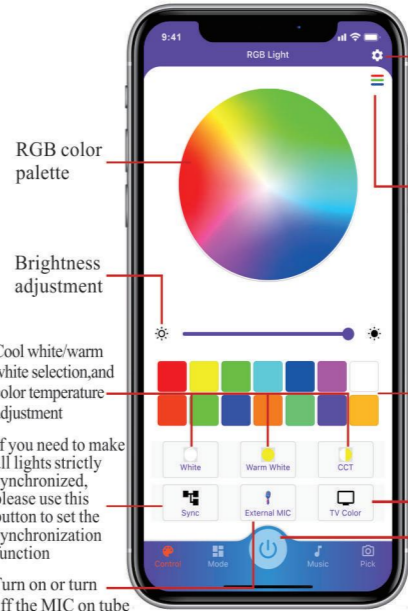
Page 2



Don't change it.

Please click "OK" directly.

Page 3



Set up

Click Go RGB color value setting

RGB color palette

Brightness adjustment

Cool white/warm white selection,and color temperature adjustment

Recently selected color shortcut

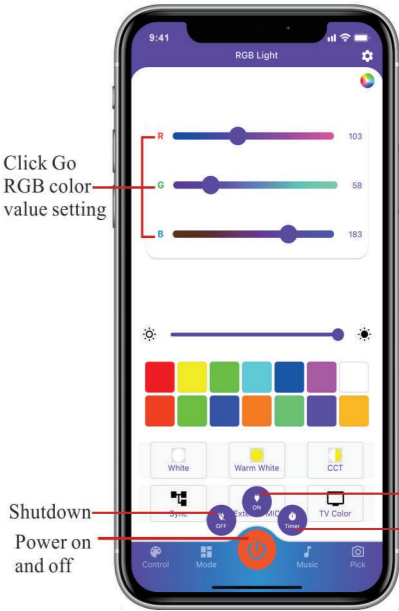
No supported

Power on and off

Turn on or turn off the MIC on tube

Tips:Open the" External Mic" on this page , voice control will still work even if you exit the APP

Page 4



Click Go RGB color value setting

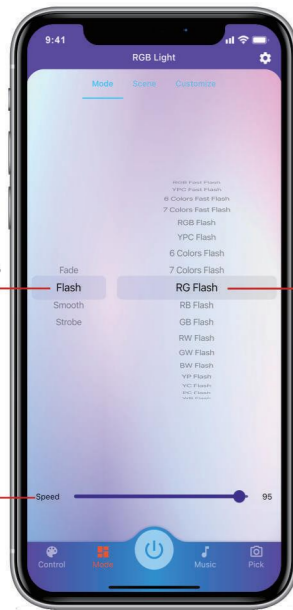
On

Delayed power on/off

Shutdown

Power on and off

Page 5

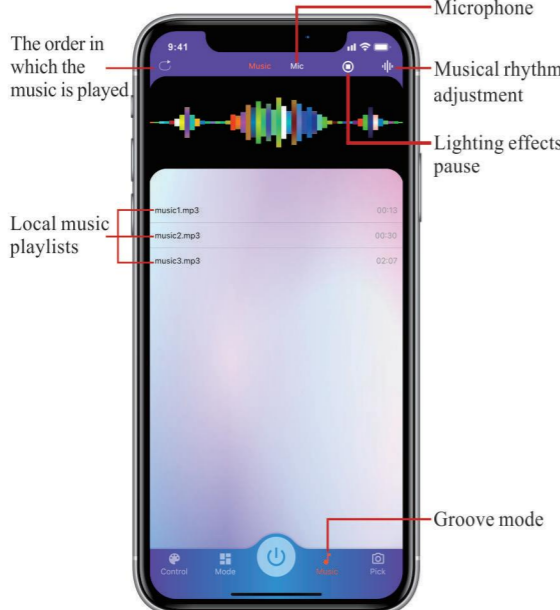


13 light modes have been saved

20 dazzling lighting effects

Speed 1-100 adjustable

Page 6



Microphone

The order in which the music is played.

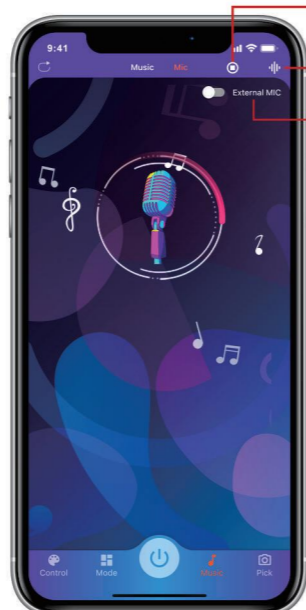
Musical rhythm adjustment

Lighting effects pause

Local music playlists

Groove mode

Page 7



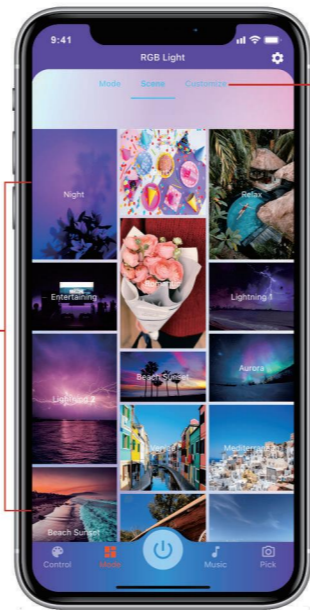
Lighting effects pause

Musical rhythm adjustment

Switch the microphone on your mobile phone or microphone on tube.

Tips:Open the "External Mic" on this page, when you exit the App, the voice control will stop working

Page 8



Enter Custom Mode

Scenario mode

Page 9



Take a photo with your phone for color

Go to the album

"FAQ"

1. The tube lights aren't controlled by APP, or they isn't synchronized:
First, it is necessary to check whether there are many Bluetooth and WiFi devices on the site, if there are, these signals may interfere with the tube light.if not, please restart the phone.
2. There are two pages where you can turn on the tube microphone,pay attention to the difference between the two pages selection of "External MIC".
Open "External MIC" on the main screen (Page 3) of the app, then exit the APP, voice control will still work. If you open "External MIC" under the Music page (page 7), exit the APP, the voice control stops working.
3. In general, the APP will automatically sync the control of all tube lights. If the tube light needs strict synchronization,please complete the following steps:

First click "Cancel Sync", press the power button on the tube light to turn off all tube lights, then open one of tube light as the master, and press "Sync" on the main screen(P3). When the tube light flashes, it indicates that the master configuration is successful. Then open the rest of the tube lights, the sync setting is complete.The tube lights are better synchronized in various modes.

4. Please turn off the power button on tube light to reduce power consumption:
When using the app /remote to "Power off", the tube light will enter the dormant state, you can still use the app /remote to "Power on" the tube light. When you do not use the tube light for a long time and avoid power consumption, you can use the power button on the bottom of the tube light to turn off to ensure that tube light doesn't drain the battery.

5. Charging precautions
When the indicator is below 25%, please charge it in time. **WARNING: Please use the matching 12.6V/2A charger using other chargers will damage the product.**

Post-sales service:ming@dsv-light.com

FCC Warning

15.19 Labeling requirements.

This device complies with part 15 of the FCC Rules. Operation is subject to the following two conditions: (1) This device may not cause harmful interference, and (2) this device must accept any interference received, including interference that may cause undesired operation.

15.21 Information to user.

Any Changes or modifications not expressly approved by the party responsible for compliance could void the user's authority to operate the equipment.

15.105 Information to the user.

Note: This equipment has been tested and found to comply with the limits for a Class B digital device, pursuant to part 15 of the FCC Rules. These limits are designed to provide reasonable protection against harmful interference in a residential installation.

This equipment generates uses and can radiate radio frequency energy and, if not installed and used in accordance with the instructions, may cause harmful interference to radio communications.

However, there is no guarantee that interference will not occur in a particular installation. If this equipment does cause harmful interference to radio or television reception, which can be determined by turning the equipment off and on, the user is encouraged to try to correct the interference by one or more of the following measures:

- Reorient or relocate the receiving antenna.
- Increase the separation between the equipment and receiver.
- Connect the equipment into an outlet on a circuit different from that to which the receiver is connected.
- Consult the dealer or an experienced radio/TV technician for help.

FCC RF Radiation Exposure Statement:

- 1.This Transmitter must not be co-located or operating in conjunction with any other antenna or transmitter.
2. This equipment complies with RF radiation exposure limits set forth for an uncontrolled environment. This equipment should be installed and operated with minimum distance 5mm between the radiator and your body.