

Xinhengyang Antenna Test Data Report

Customer Name		Anfu Youyou	Project Name	AFU0099
U	Proj		Hsiang	
1	frequ		2400-2500MHZ	
2	Project Type		Pet food dispenser	
3	Ter		Generation	
4	Feed Point Type		doubly-fed	
5	Line		Wire diameter: 1.13 L = 170MM	
6	Antenna Type		PIFA	
7	Antenna Material		FPC	
8	Rem			



Manufacturer : Shenzhen Xinhengyang Technology Co., Ltd.

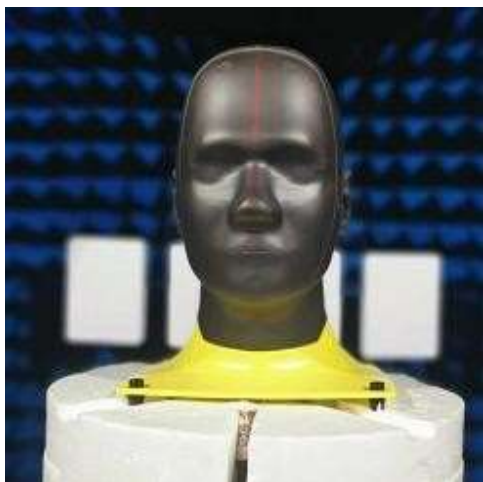
Room 7A-909, 8th Floor, West Block, Kanghe Sheng Building, No.1 Xili Chuangsheng Road, Nanshan District,
Shenzhen

Directory

- 1 Test darkroom profile
2. machine picture
3. Antenna assembly
4. Passive standing wave diagram
5. Passive field pattern diagram six. Passive Efficiency & Gain

1. Introduction to Test Darkroom

- 1. Active test: support 2.3.4.5G standard multi-mode measurement NB-IoT, eMTC, CAT-1, Bluetooth 1-5, WIFI 802.11 abgn, measurable TRP TIS
- 2. Passive test: can test gain, efficiency
- 3. TWS Headset Test Head Model Full Head Hand





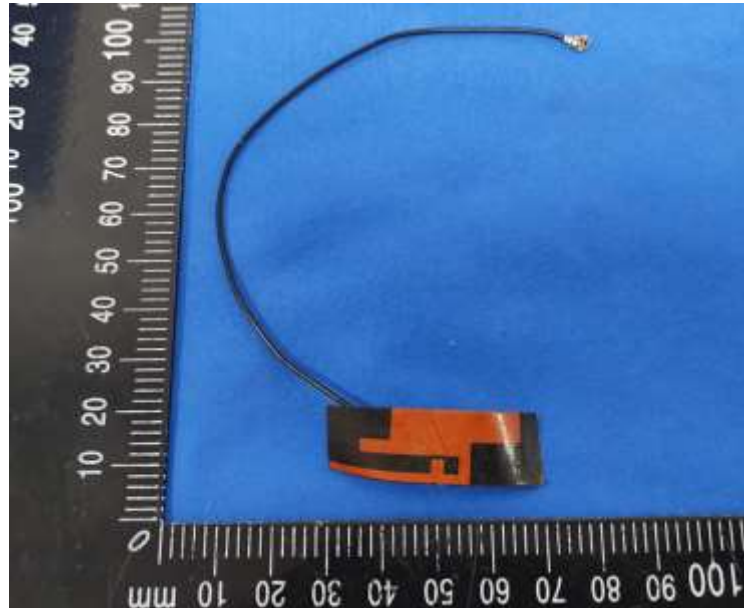
Manufacturer : Shenzhen Xinhengyang Technology Co., Ltd.

Room 7A-909, 8th Floor, West Block, Kanghe Sheng Building, No.1 Xili Chuangsheng Road, Nanshan District, Shenzhen



2 Antenna picture

Antenna Length: 14mm x 35mm
Wire diameter: 1.13 L = 170mm

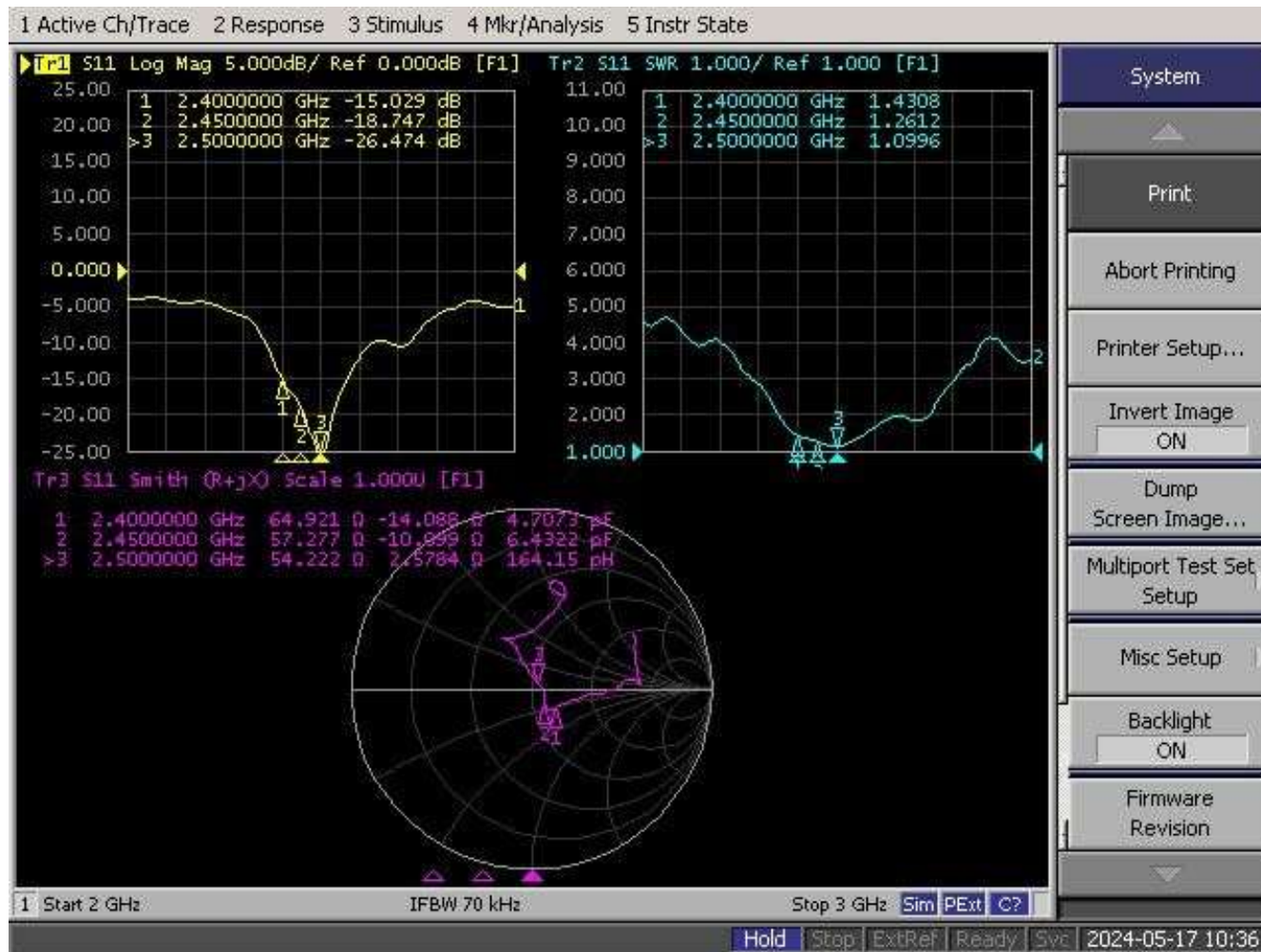


3 Antenna assembly

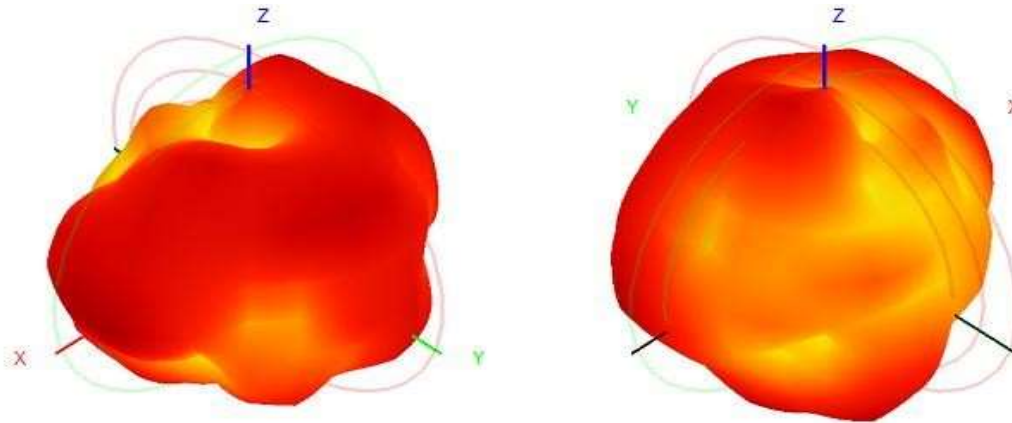


Antenna assembly
as shown

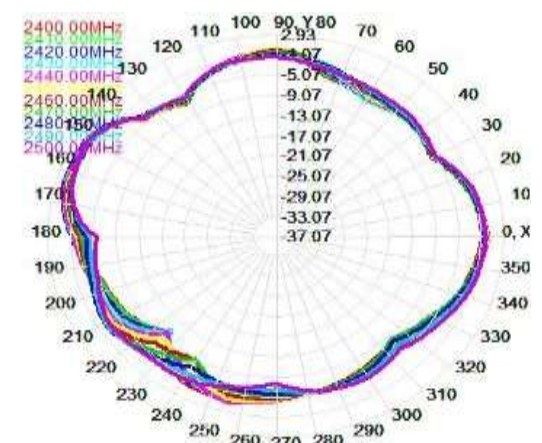
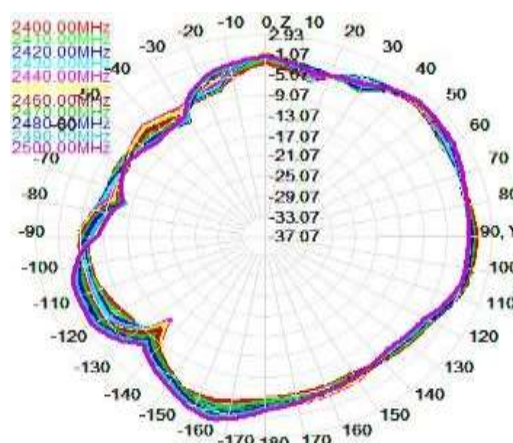
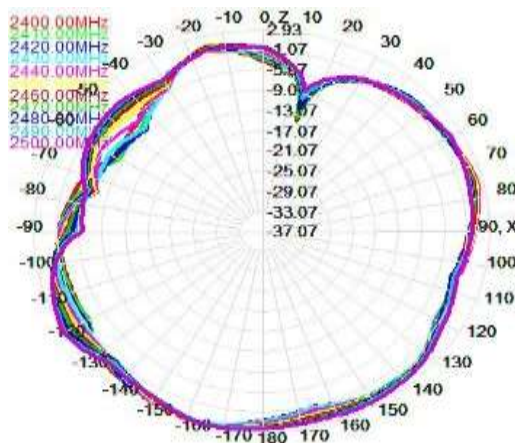
4 passive standing wave diagram



5 passive field pattern diagram



E1 (xz) E2 (yz) H (xy)



VI. Passive Efficiency & Gain

Freq (MHz)	Effi (%)	Gain (dBi)
2400	55.46	3.13
2410	55.40	3.00
2420	56.10	2.79
2430	56.30	2.70
2440	58.09	3.00
2450	58.59	3.11
2460	58.55	3.15
2470	58.77	3.06
2480	60.41	3.06
2490	62.25	3.01
2500	64.86	3.23



Manufacturer : Shenzhen Xinhengyang Technology Co., Ltd.

Room 7A-909, 8th Floor, West Block, Kanghe Sheng Building, No.1 Xili Chuangsheng Road, Nanshan District,
Shenzhen

Thank you