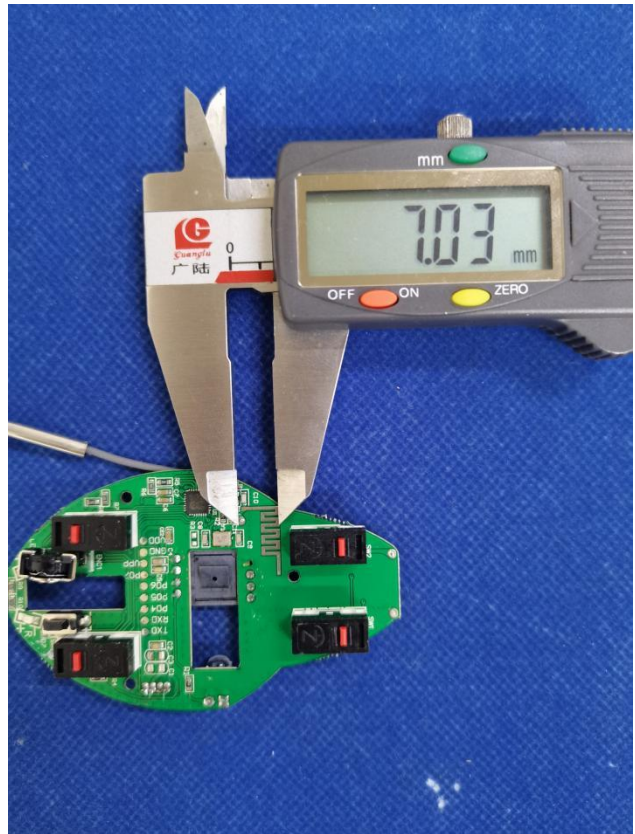
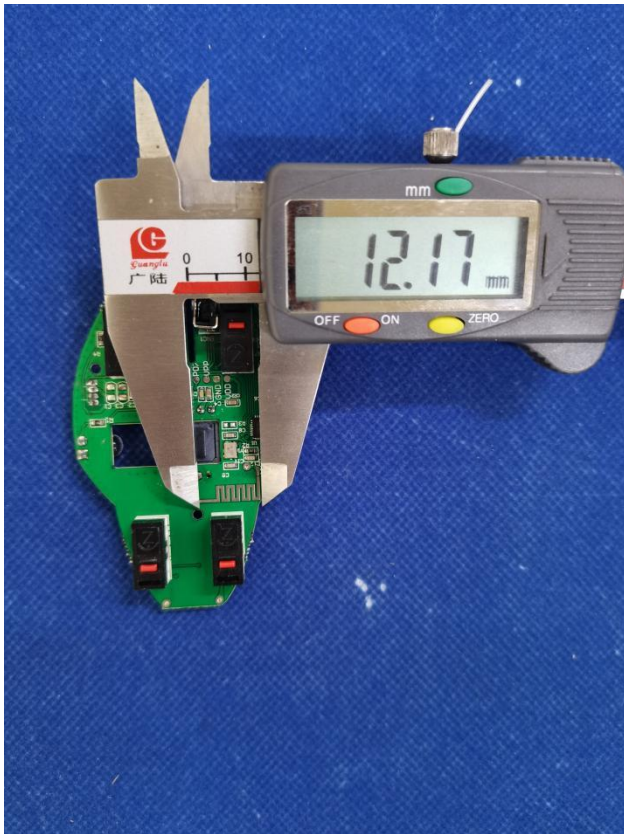


## 1. Antenna Description:

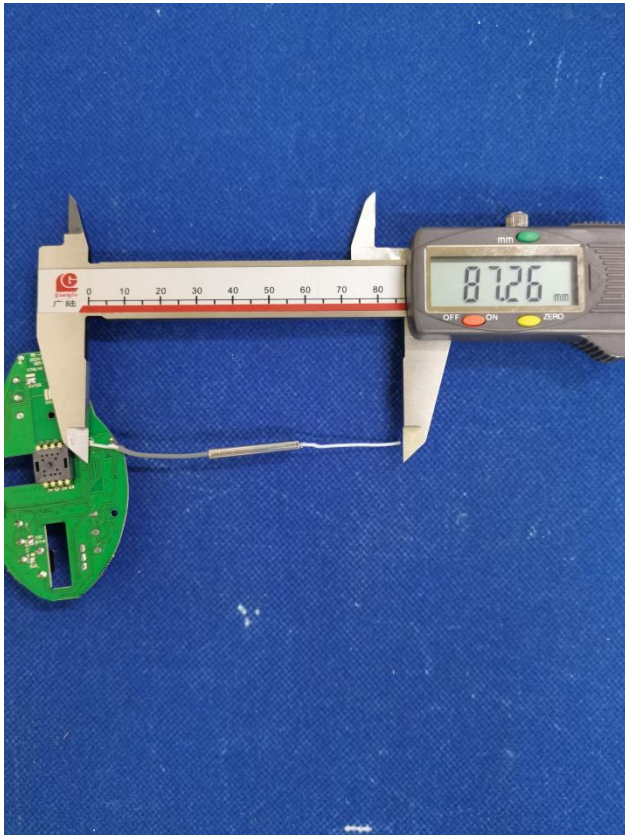
Antenna type	Internal antenna
Model	Y-10
Frequency range	2400-2500MHz
Manufacturer	Quanzhou YouMouse Electronic Science&Technology Co., Ltd
ANT Peak Gain	0.52 dBi

## 2. Antenna Photo:

Length: 12.17mm  
Width: 7.03mm



Length: 87.26mm  
Width: 3.31mm



### 3. Test Equipment & Conditions

#### 3.1 Test instrument

VSWR is tested using Agilent E5071B connected to a hand mechanism, and the status is free space.

#### 3.2 Test environment and methods

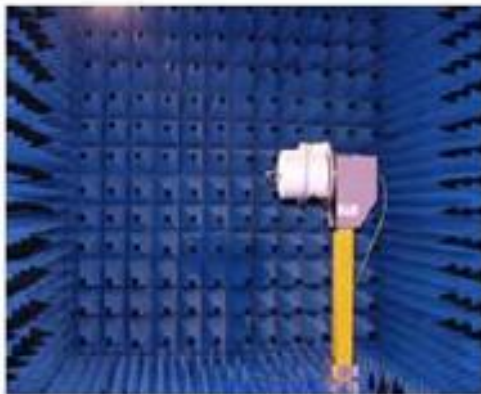
Dark room specifications: ETS-743

TD-SCDMA test equipment: StarPoint SP6010/Agilent 8960

LTE-TDD/FDD-SCDMA test equipment: StarPoint SP8011/CMW500

WCDMA/GSM/CDMA test equipment: Agilent 8960

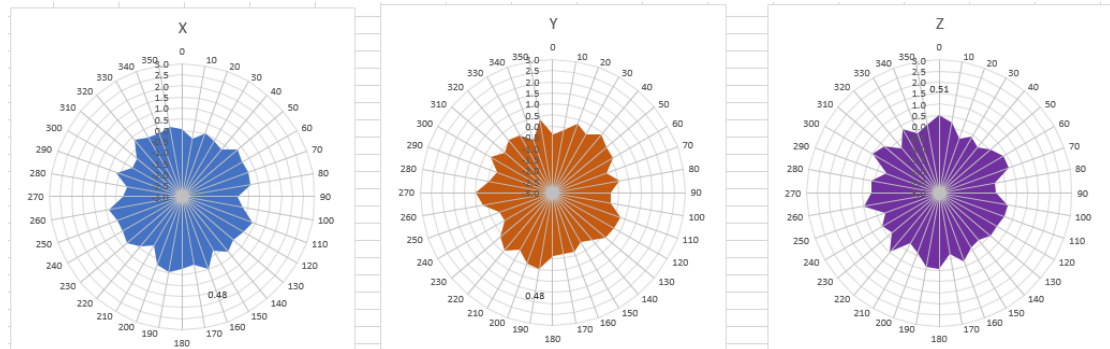
Passive efficiency testing equipment: Agilent Technologies E5071B



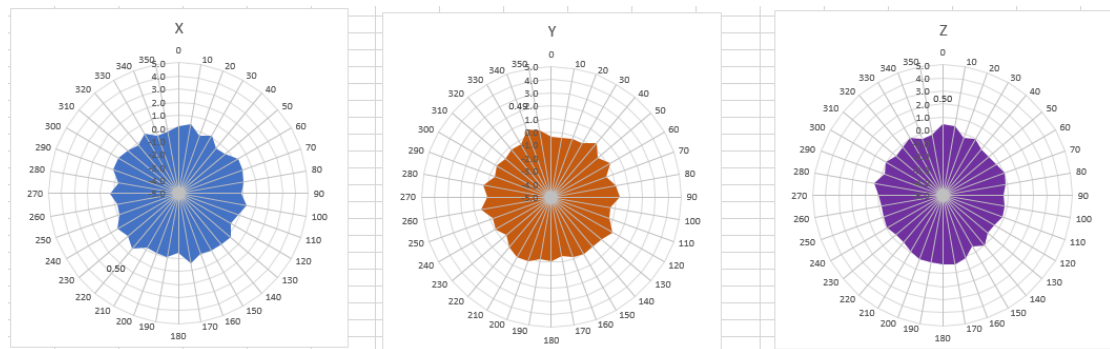


## 4 . Antenna Radiation Pattern

2400MHz



2450MHz



2500MHz

