

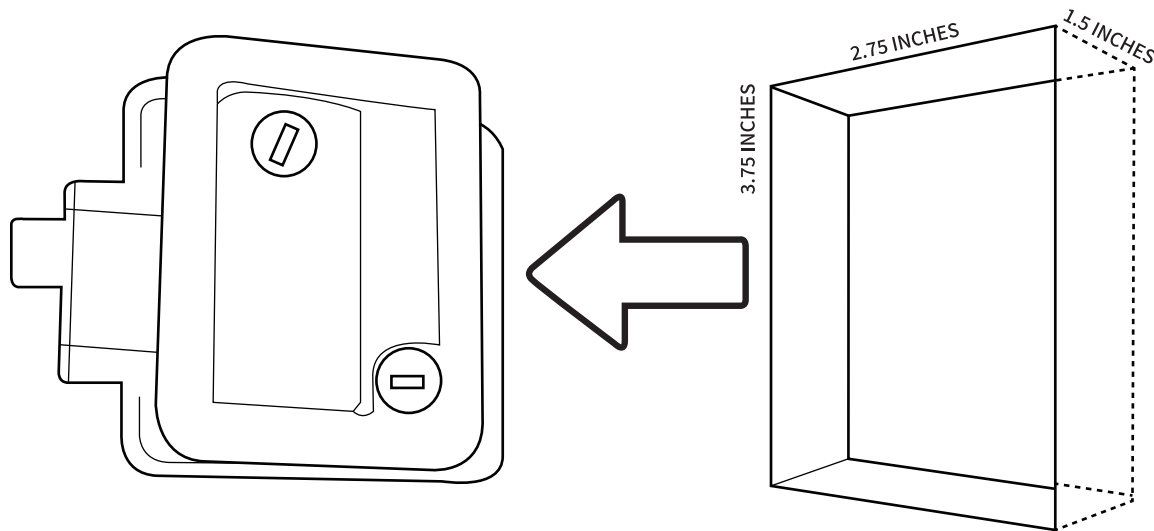
KEYLESS RV DOOR LOCK



User Manual

RV Door Lock-Fit Guide

CHECK YOUR OPENTING SIZE BEFORE INSTALLING



Lock Hole Opening Size

MUST MEASURE: 3.75" tall x 2.75" wide x 1.5" deep

NOTE: Make sure there are no obstructions such as windows or screen doors around the lock hole

Installing The New Keyless RV Door Lock

Remove the Existing Handle

1. Securely latch your RV door in the open position.
2. Remove the 4 screws from the back of the existing handle(see Fig. 1).
3. Remove the 2 screws and the strike plate from the side of the door (Fig. 2)-you will now be able to remove the front portion of the handle (Fig. 3).

- At this point, you are ready to install and program your new RV Door keyless Handle Lock.

Installing the new keyless RV Door Lock

1. Carefully remove your new RV Lock from its packaging and place all the parts on a flat, non-abrasive surface.
2. Remove the 2 screws holding the battery cover and install the 4 AA alkaline batteries.
3. Slide the Front Handle of your new RV Door Lock into the opening on the front of the door (Fig. 4), while carefully pulling the wires ahead of the lock and through the opening(Fig. 5).



Fig.1



Fig.2



Fig.3



Fig.4

RV Door Lock Installation Instructions

Then, hold the front handle in place so that it does not fall, and attach the new strike plate with the 2 shorter screws on the door jamb side (Fig. 6).

4. While holding the RV Door Lock's Back Handle, connect the battery wires to the Front Handle that is already in the door (Fig. 7). A confirmation beep signifies that the connection is made.

NOTE: "ON/OFF" switch does NOT have to be in the ON position (This switch only turns on the ability to use the FOB/remote).

5. Carefully align and attach the back handle while gently tucking excess wires into the void area. Hold the paddle of the Back Handle closed while inserting the paddle tooth into the Front Handle housing.

NOTE: Make sure not to pinch or cut wires during installation.

6. Use a #2 Phillips screwdriver to install the 4 longer screws. For the moment, only tighten the screws tight enough to keep the lock securely against the door (Fig. 8).

7. Adjust and straighten the Front Handle in the opening. Once straight, hold it in place while fully tightening the 4 longer screws of the Back Handle (be careful not to overtighten).

If the door is hard to shut or will not close tight, simply adjust the strike plate on the jamb side of the door.

DO NOT place your mechanical keys inside your trailer. Keep them somewhere outside of the trailer (like in a glove box) so they are available if you need them.



Fig.5



Fig.6

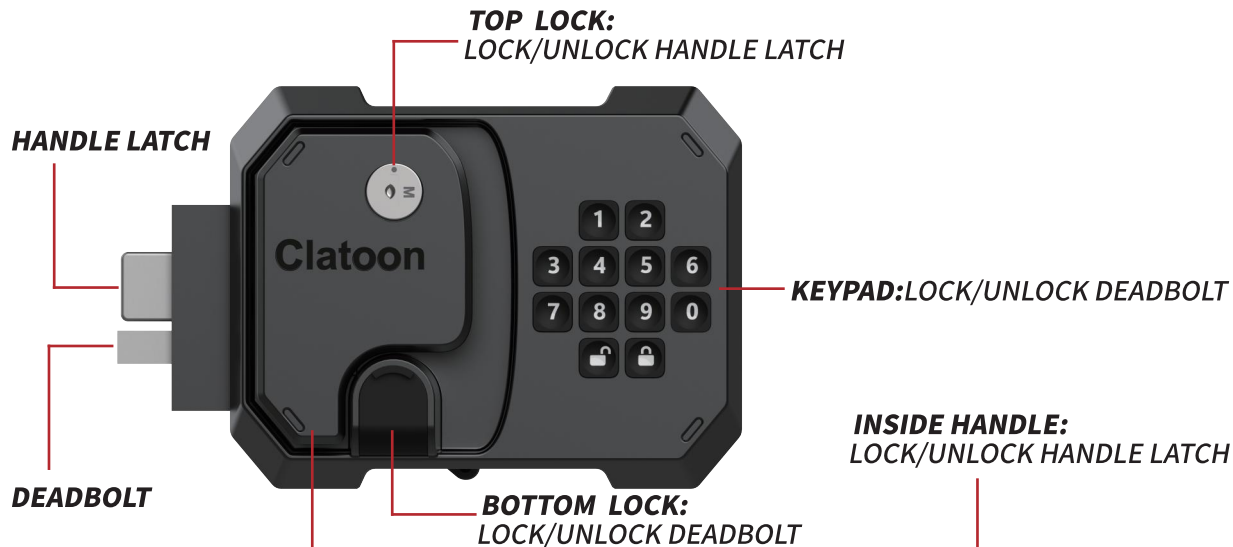


Fig.7



Fig.8

RV DOOR LOCK- Outside\Inside Instructions



OUTSIDE HANDLE:
CONTROLS HANDLE LATCH

ONE CLICK BUTTON:
LOCK/UNLOCK DEADBOLT

INSIDE HANDLE:
LOCK/UNLOCK HANDLE LATCH



RV Door Lock-Keypad Programming

Programming the Keypad

NOTE: Once you have started the programming steps, **DO THEM QUICKLY** one after the other—no pauses between the steps.

STEP 1: Hold the “Code Setting” button (Fig. 9) for 5 seconds.

STEP 2: Type in default code “12345” and press the “LOCK” button.

STEP 3: Type in your NEW Code and press the “LOCK” button

STEP 4: Re-Type in your NEW Code for confirmation and press the “LOCK” button.

Your new code is now programmed!

- Now you can enter your New Code + LOCK or New Code + UNLOCK and see if the deadbolt is moving correctly.
- Hold the “LOCK” button for 3 seconds to LOCK.
- **If you forget your password or program it unsuccessfully, press the “Code Reset” button (Fig. 10) for 5 seconds, and the password will be restored to the default code “12345” .**

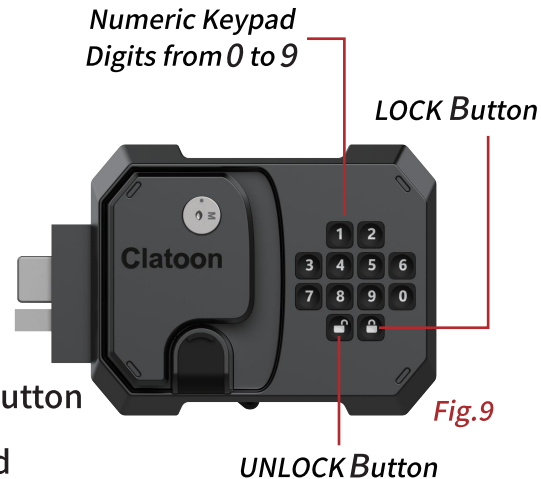


Fig.9

Code Reset

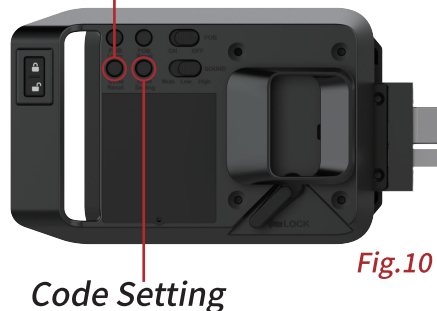


Fig.10

RV Door Lock Operation Instructions

Programming the Remote FOB

NOTE: The FOBs included in the package are already programmed!

STEP 1: Turn the switch of the internal control panel FOB (Fig. 11) to the ON position.

STEP 2: Press and hold the FOB Learn button (Fig. 12) for 5 seconds, You will hear a beep, and all keypads light up, indicating that the remote control matching mode is entered.

STEP 3: After entering the remote control matching mode, press and hold the lock button (Fig. 13) on the remote control until four beeps are heard, indicating that the matching is successful.

STEP 4: Finally, press the lock and unlock buttons on the remote control to control the keyless RV Door lock.

• You must hold the remote buttons down for a couple of seconds to actuate the handle; this is a safety feature against accidental pushes

• If you lose the FOB, press the “FOB reset” button for 5 seconds to delete the matched FOB, and then follow steps 1—4 to reprogram the FOB in your hand or with a new FOB.

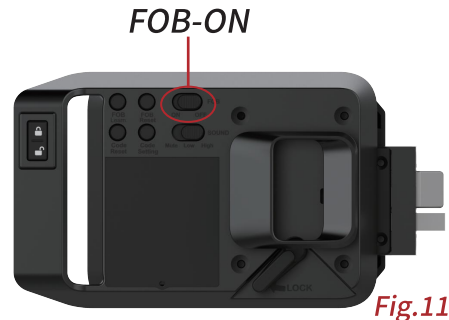


Fig.11

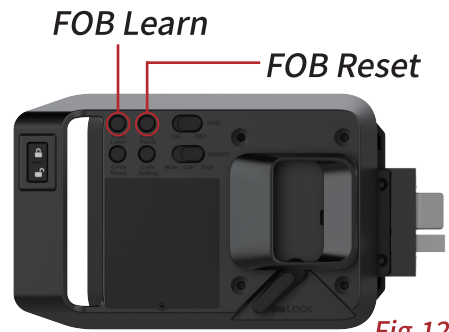
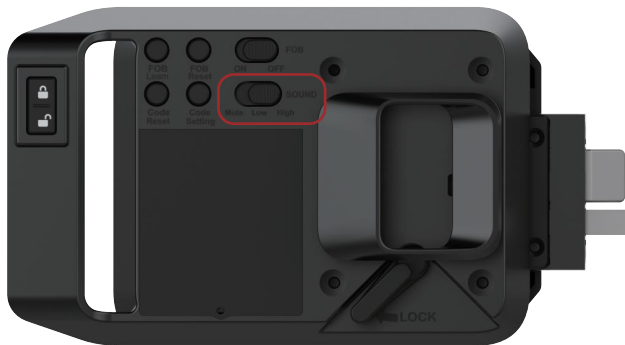


Fig.12



Fig.13

RV DOOR LOCK-Sound Volume Control



There are 3 available options for the RV door Lock sound volume:

- **High**
- **Low**
- **Mute**

Simply use the SOUND Switch to change between these 3 options

RV DOOR LOCK-One Click Unlock

You can unlock the DEADBOLT with just **One Click** inside the door and hold the Lock button pressed for 5 seconds to Lock the DEADBOLT.



FCC Requirement

Any changes or modifications not expressly approved by the party responsible for compliance could void the user's authority to operate the equipment.

This device complies with Part 15 of the FCC Rules. Operation is subject to the following two conditions:

- (1) this device may not cause harmful interference, and
- (2) this device must accept any interference received, including interference that may cause undesired operation.

This transmitter must not be co-located or operating in conjunction with any other antenna or transmitter.

Note: This equipment has been tested and found to comply with the limits for a Class B digital device, pursuant to Part 15 of the FCC Rules. These limits are designed to provide reasonable protection against harmful interference in a residential installation. This equipment generates, uses, and can radiate radio frequency energy, and if not installed and used in accordance with the instructions, may cause harmful interference to radio communications. However, there is no guarantee that interference will not occur in a particular installation. If this equipment does cause harmful interference to radio or television reception, which can be determined by turning the equipment off and on, the user is encouraged to try to correct the interference by one or more of the following measures:

- Reorient or relocate the receiving antenna.
- Increase the separation between the equipment and receiver.
- Connect the equipment into an outlet on a circuit different from that to which the receiver is connected.
- Consult the dealer or an experienced radio/TV technician for help.

This device complies with FCC radiation exposure limits set forth for an uncontrolled environment.