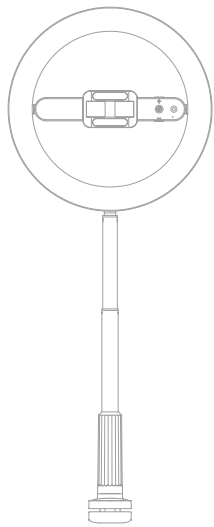


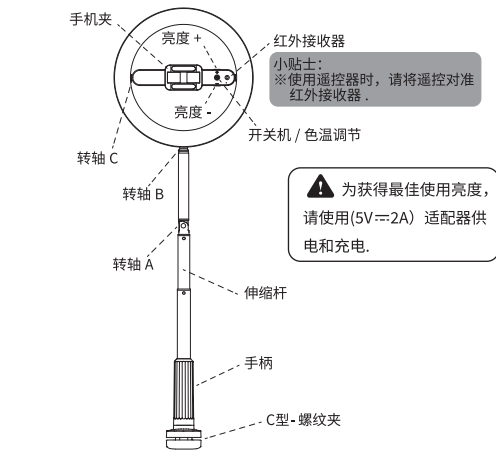
尺寸:75mm \* 101mm 正反面印刷

无极调节直播拍摄支架



产品使用手册

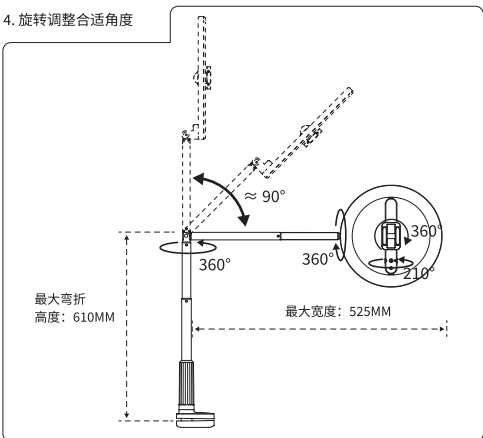
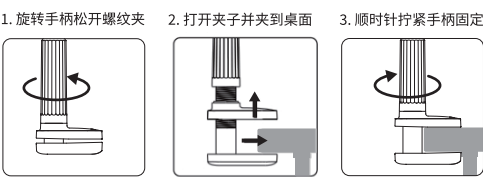
一、产品说明



遥控器按键	按键功能
⏻ 开关键	1.控制补光灯,长按2秒开启或关闭补光灯。 2.短按调节灯光模式(白光,黄光,混合光3种模式)
⊖ 亮度-	5挡亮度可调,±调节
⊕ 亮度+	

1. 充电  
充电 2-2.5h 充满。充电时,指示灯闪烁,充满后常亮。

二、调整角度 / 高度:



三、产品参数:

产品型号: R6 (插电版)  
产品名称: 无极调节直播拍摄支架  
尺寸: 约 260\*80\*363mm  
最大展开高度: 1160mm  
材质: 铝合金, ABS, PC, 锌合金  
补光灯额定输入: 5V=2A  
补光灯额定功率: 6.5W  
产品净重: 约 510g  
产品毛重: 约 740g  
企业标准: Q/ZHZZ 001-2021  
工作温度: -10°C~+40°C

产品型号: R6 (可充电版)  
产品名称: 无极调节直播拍摄支架  
尺寸: 约 260\*80\*363mm  
材质: 铝合金, ABS, PC, 锌合金  
补光灯额定输入: 5V=2A  
补光灯额定功率: 6.5W  
电池容量: 3000mAh  
产品净重: 约 600g  
产品毛重: 约 830g



遥控器按键	按键功能
⏻ 按键1	1.控制补光灯,长按2秒开启或关闭补光灯。 2.短按调节灯光模式(白光,黄光,混合光3种模式)
⊖ 按键2	5挡亮度循环调节
📷 拍照键	1.长按2s 开机 或 关机 2.短按拍照

\* 使用遥控控制灯光时, 请对准红外接收口。

R6 (可充电版本)—— 遥控拍照说明:

- 开机  
长按遥控拍照键 2S 开机, 产品进入配对搜索状态, 蓝灯快闪。
- 蓝牙配对  
打开手机蓝牙功能, 搜索设备蓝牙识别代码 "DUCSUAL", 点击配对连接即可使用。当设备与手机蓝牙配对连接成功后, 蓝灯熄灭。
- 视频录制 / 拍照  
蓝牙配对成功后, 打开手机相机, 按一下遥控器拍照键, 蓝灯闪亮一次, 拍照、或开始手机录像。休眠模式下, 先按拍照键激活, 再次按拍照键拍摄。
- 关机  
长按拍照键 2S 蓝灯快闪并关机。
- 休眠  
无操作 300 秒后进入休眠状态, 休眠状态按拍照键激活。
- 充电  
遥控器约 45 分钟充满, 补光灯 2-2.5h 充满。充电时, 指示灯闪烁, 充满后常亮。

四、包装内容:

- 无极调节直播拍摄支架 \*1 说明书 \*1 充电线 \*1  
\* 说明书图案仅供参考, 请以实物为准。

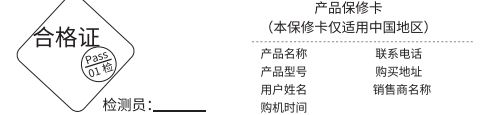
五、赠品:



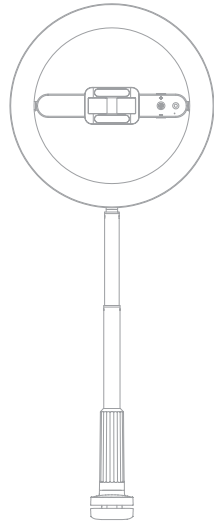
六、三包凭证:

- 保修卡请用户妥善保管, 以做维修凭证
- 保修期限自购买之日起一年
- 保修设备在保修期内, 在正常使用情况下, 机器本身材料或功能出现问题, 发生故障, 经查验属实, 本公司将提供免费维修和更换。

以下情况恕不免费维修  
本公司的产品实行保修年限之内的有限保修属于下列情况的设备故障或损坏, 不在有限保修之列, 本公司不承担免费维修义务; 设备、部件已经超出了保修期; 客户未按照说明书要求, 错误安装, 保管及使用而造成的设备故障或损坏; 由非本公司授权机构、人员拆卸而造成的设备故障或损坏。因意外因素或人为原因(包括如操作失误、刮伤、搬运、碰撞、输入不合适的电压和电流等)导致的设备故障或损坏; 因自然灾害等不可抗力(如地震、火灾)原因造成的产品故障或损坏。

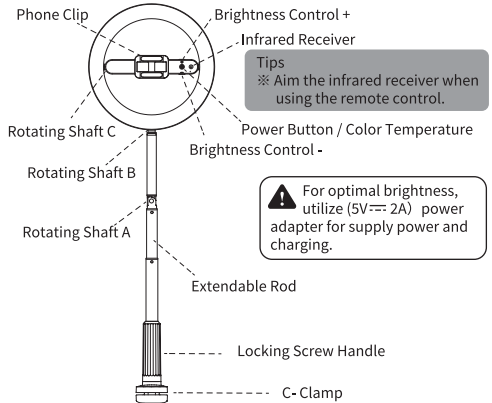


Stepless Adjustment  
Livestreaming / Filming Phone Stand



User Manual

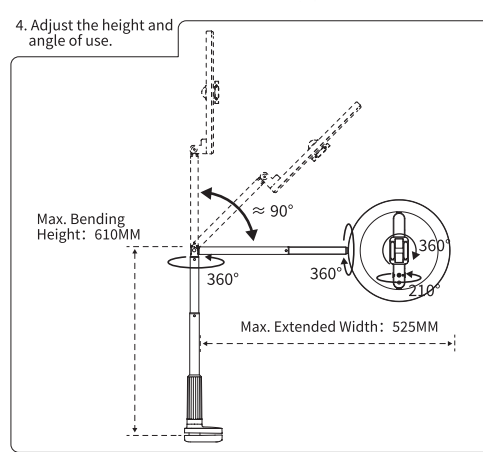
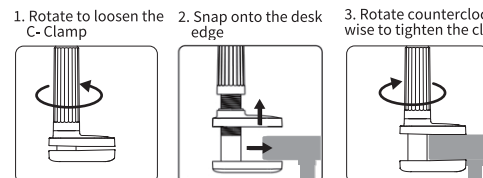
I. Product Structure



Push Button	Function
⏻ On/OFF	1.Press and hold 2 seconds to turn on / off the products. 2. Press to adjust light mode.
⊖ Dimmer	Brightness -, adjust brightness level
⊕ Dimmer	Brightness +, adjust brightness level

- 1.Charging Time  
Charging time for the light is 2-2.5h. The indicator light flashes while charging and remains on when fully charged.

II. How to adjust the angle of use



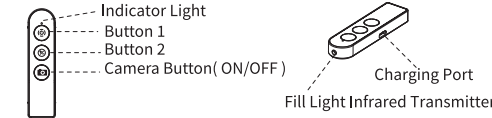
III. Product Parameter

Product Model: R6 ( Plug-powered Version)  
Product Name: Stepless Adjustment Phone Stand  
Size: about 260\*80\*363mm  
Material: Aluminum Alloy, ABS, PC, Zinc Alloy  
Rated Input: 5V=2A  
Rate Power: 6.5W  
Max. Extended Height: 1160mm  
Net Weight: about 510g  
Gross Weight: about 740g  
Working Temperature: -10°C~+40°C

Product Model: R6 (Rechargeable Version)  
Product Name: Stepless Adjustment Phone Stand  
Size: about 260\*80\*363mm  
Material: Aluminum Alloy, ABS, PC, Zinc Alloy  
Max. Extended Height: 1160mm  
Battery Capacity of Ring Light: 3000mAh  
Rated Input of Ring Light: 5V=2A  
Rated Power of Ring Light: 6.5W  
Remote-control distance: ≤10M  
Rated Input of Remote Control: 5V=1A  
Remote Control Battery Capacity: 55mAh  
Net Weight: about 600g  
Gross Weight: about 830g  
Working Temperature: -10°C~+40°C  
Supported System: Android / IOS / HOS

\* The image of user manual is only for reference, please make the object as the standard. We reserve the right for final explanation.

R6 (Rechargeable Version)—— Remote Control Instructions:



Remote Control	Button Function
⏻ Button 1	1. Press and hold 2 sec. to turn on/off the light. 2. Press to adjust light mode, 3 modes.
⊖ Button 2	Adjust brightness, 5 brightness level.
📷 Camera Button (ON/OFF)	1.Press and hold 2 sec. to turn on/off the camera function. 2. Press to take photo.

R6(Rechargeable Version)—— Camera Shutter Remote Control Steps:

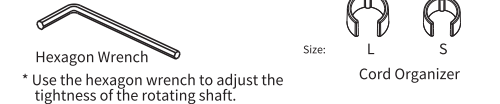
- Power On  
Press and hold the camera button for 2 seconds, the blue flash light flash and product goes in to the pairing status.
- Bluetooth Pairing  
Turns on your phone Bluetooth function in setting, search the pairing device with the name "DUCSUAL" and click to pair.The blue light off after the device paired successfully.
- Recording Video/ Take Photo  
After finish the Bluetooth pair, open the phone camera, press the camera button on remote control to take photos or record video.
- Power Off  
Press and hold the camera button for 2 seconds, the blue light flash and product being turns off.
- Sleeping Mode  
Without any operation, the products will enter sleep mode after 300s. Press the camera button once to activate it.
- Charging Time  
Charging time for remote control is 45min. The indicator light flashes when charging, being on after fully charged.

\* Aim your remote at infrared receiver window when you use remote controll to adjust the light.

V. What's in the box

- R6 Phone Stand\*1 unit User Manual\*1 unit  
Charging Cable \*1 unit

VI. Small Gift:



VII. Warranty

- Please keep your service card or receipt safe for maintenance certificate.
- Warranty period is one Year from the date of purchase.
- During warranty period, if there are any problems or malfunction about this product in the case of normal use and maintenance, after verification, we will provide free repair and component replacement.

Declaration of Conformity (FCC)

Warning: Changes or modifications to this unit not expressly approved by the party responsible for compliance could void the user's authority to operate the equipment.  
This device complies with Part 15 of the FCC Rules.  
Operation is subject to the following two conditions:  
(1) this device may not cause harmful interference  
(2) this device must accept any interference received, including interference that may cause undesired operation.

This device complies with part 15 of the FCC Rules. Operation is subject to the following two conditions: (1) This device may not cause harmful interference, and (2) this device must accept any interference received, including interference that may cause undesired operation.

Any Changes or modifications not expressly approved by the party responsible for compliance could void the user's authority to operate the equipment.

**Note:** This equipment has been tested and found to comply with the limits for a Class B digital device, pursuant to part 15 of the FCC Rules. These limits are designed to provide reasonable protection against harmful interference in a residential installation. This equipment generates uses and can radiate radio frequency energy and, if not installed and used in accordance with the instructions, may cause harmful interference to radio communications. However, there is no guarantee that interference will not occur in a particular installation. If this equipment does cause harmful interference to radio or television reception, which can be determined by turning the equipment off and on, the user is encouraged to try to correct the interference by one or more of the following measures:

- Reorient or relocate the receiving antenna.
- Increase the separation between the equipment and receiver.
- Connect the equipment into an outlet on a circuit different from that to which the receiver is connected.
- Consult the dealer or an experienced radio/TV technician for help.

#### FCC Radiation Exposure statement

The device has been evaluatec to meel general RF exposure requirement. The device can be used in porlable exposure condition without restriction.