

CPF101

User Manual



Thanks for choosing our product, please read this instruction manual carefully before using, use the steps to operate this product. Keep it in safe place for future use after reading.

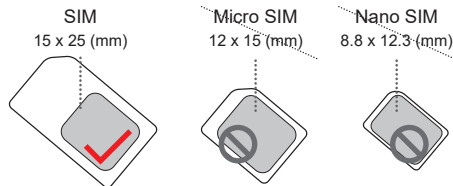
Input:12V 1A

Model:CPF101

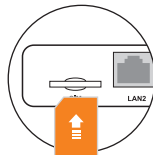
Insert SIM card and Connection method

1 Insert SIM card

According to the interface identification on the device, insert the SIM card, pay attention to the metal electric shock and the missing direction of the card.



Micro SIM / Nano SIM card needs to be restored by card sleeve to SIM to insert; otherwise it will not be ejected inside the card.

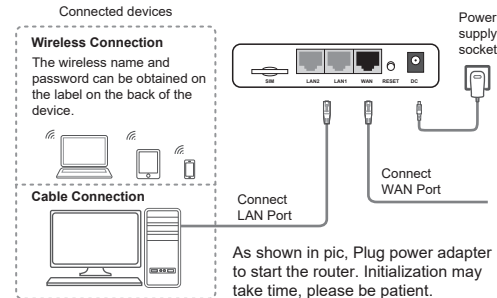


As shown in the pic, the SIM missing corner face inside, the metal chip faces down, inserts the slot, you can hear clatter and fasten it.

Please insert sim card and connect correctly

- 1: Insert SIM card on router
- 2: Power on power adapter and connect to router
- 3: Suggest using cell phone for configure settings, no need cable. If you want to use computer for configuration you need connect router lan port to computer, make sure connection is correct, computer use dynamic IP obtaining.

2 Plug power adapter if you do not want a wired connection, the cable is not necessary to be connected



WAN port: support automatic IP (DHCP) and PPPOE broadband dial-up, the default is to automatically obtain IP for Internet access, if you need to use broadband dial-up, you can log in WEB Management-dial-up mode to set according to the prompts. After PPPOE set, the device can only be used as a normal router, not 4G router. If you want to use 4G SIM to access the Internet, please set dialing method to 4G and wired DHCP or directly restore factory.

Special function: This device supports 4G and WAN port automatic switching function (need to enable "Internet backup" -"Wire WAN priority " in the WEB management)

Note: In the default configuration, if WAN port is connected to fiber network cable (DHCP) and SIM is inserted at the same time, network data is supplied by SIM card.

After connecting the device, please check whether the router indicator is normal.

POWER	Power indicator, turn on the power (long light)
4G	4G mobile data network indicator, The light will be on after inserted 4G SIM with normally supplied network be recognized. Inserted SIM card in arrears or no 4G signal, it's off
DATA	Data status indicator light, network connection success (flashing)
If the indicator is abnormal, please check whether the card is correct.	

Answers to common questions

FAQ 1: Forgot username and password how to do? (How to reset the router?).

If you forget the username and password, or you can't do the backstage in the setup process, when the router is energized, press router's RESET key for 5-8 seconds and release, router make factory default.

FAQ 2: Enter 192.168.188.1 in the browser's address bar, can't open management page?

1: If the computer is set up, open the IE browser, click the tool - click the Internet option, click the connection - click the LAN settings to ensure that the proxy server does not tick.

2: If the computer is set up, please check the computer's wireless network configuration or local network configuration to ensure that the computer "automatically gets the IP address", "automatically gets the DNS server address", restarts the router, disconnects the router power, and then plug in the power supply later.

3: If you cannot login to the router management interface after completing the above operations, it is recommended that you reset the router and reset method see FAQ1.

FAQ 3: The router signal lights up, has data transmission, but the Internet is slow.

1: Please move the router to other locations, such as near the

window, to ensure better reception of 4G signals.

2: Repower the router to reboot the router

FAQ 4: When the router changes the card during its operation, why

can't the device read the SIM card?

SIM card hot plug is not supported by equipment, and the insertion and removal actions should be carried out under power failure. Please disconnect the power of the router and then plug in the power.



Matters needing attention

1: please do not cause this product to be subjected to strong impact or vibration, so as not to damage the product, resulting in failure of this product.

2: do not disassemble or refit this product without authorization

3: please do not place this product and its accessories in high or low temperature areas; otherwise it may cause the product to be malfunctioning and unable to run normally.

4: please do not keep this product near the source of heat or naked fire, such as electric heater, microwave oven, oven, water heater, candle or other places where high temperature may occur.

5: in the storage, transportation and operation environment, please pay attention to waterproofing.

6: use device rated power adapter

7: placed the device on a flat surface

8: microwave oven, Bluetooth equipment, fridge and so on will seriously interfere with the wireless signal. Please try to place it in a spacious and accessible area and keep it away from the above equipment.

FCC Warning

This device complies with part 15 of the FCC Rules. Operation is subject to the following two conditions: (1) This device may not cause harmful interference, and (2) this device must accept any interference received, including interference that may cause undesired operation.

Any Changes or modifications not expressly approved by the party responsible for compliance could void the user's authority to operate the equipment.

Note: This equipment has been tested and found to comply with the limits for a Class B digital device, pursuant to part 15 of the FCC Rules. These limits are designed to provide reasonable protection against harmful interference in a residential installation. This equipment generates uses and can radiate radio frequency energy and, if not installed and used in accordance with the instructions, may cause harmful interference to radio communications. However, there is no guarantee that interference will not occur in a particular installation. If this equipment does cause harmful interference to radio or television reception, which can be determined by turning the equipment off and on, the user is encouraged to try to correct the interference by one or more of the following measures:

- Reorient or relocate the receiving antenna.
- Increase the separation between the equipment and receiver.
- Connect the equipment into an outlet on a circuit different from that to which the receiver is connected.
- Consult the dealer or an experienced radio/TV technician for help.

This equipment complies with FCC radiation exposure limits set forth for an uncontrolled environment. This equipment should be installed and operated with minimum distance 20cm between the radiator & your body.