

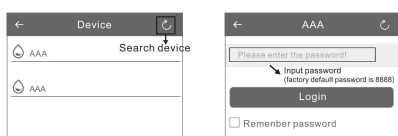
## Bluetooth instruction

### Where to get the app:

Please search for "Home Luxury Scents" in Google play or App store .

### Note:

1. Please make sure that the Bluetooth function is turned on;
2. Please make sure that the location function of the mobile phone is turned on.



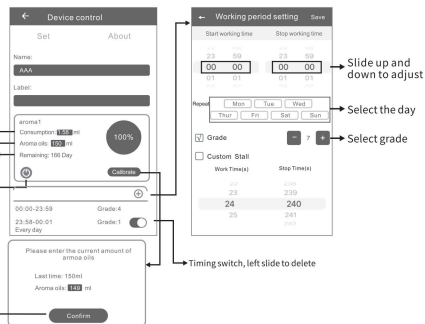
**Consumption:** This value is calculate based on one hour of continuous machine work with 13 mPa.s aroma oil of our company. But aroma oils with different viscosities have varied consumption rates, you can calibrate it via app.

**Aroma oil:** The amount of aroma oil added to bottle.

**Remaining:** This refers to how long the aroma oil can be used based on consumption, aroma oil, grade, and working periods.

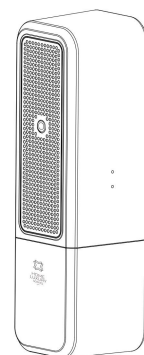
Turn ON/OFF the device

**Calibrate:** It is used for calibrating consumption. It is advised to calibrate after working for at least 10 days. Please measure the remaining oil of bottle first, then tap "calibrate" in the APP, input the amount of remaining oil, and confirm. So the consumption, remaining day, and percentage will be updated.



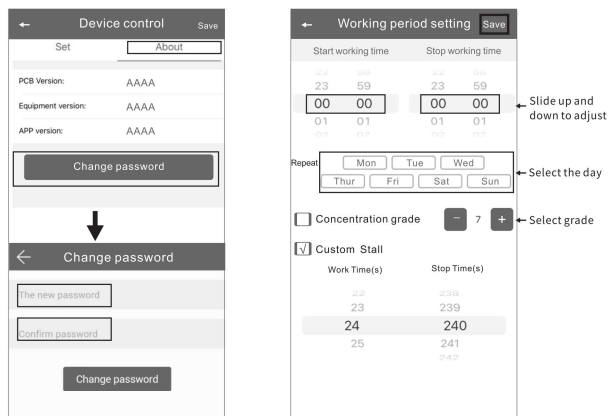
## PRODUCT MANUAL

### Aroma diffuser



HLS450+

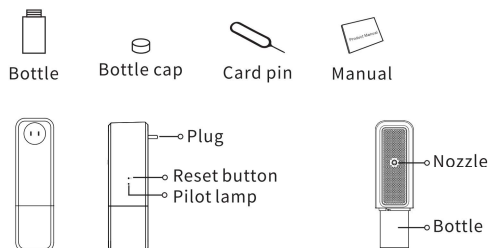
## Amend password



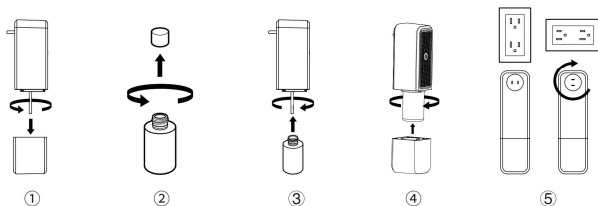
If you forget the password, please press the reset button to restore the factory setting. The factory settings password is 8888.

## Specification

【 Model 】	HLS450+
【 Size 】	227*65*86mm
【 Bottle 】	100ml
【 Input 】	AC100V-240V 50/60Hz
【 Power 】	3W
【 Coverage 】	30m <sup>2</sup> /100m <sup>3</sup> /19000ft <sup>3</sup>
【 N.W. 】	0.39kg
【 Material 】	Plastic



## How to refill essential oils



1. Unscrew the bottom cover;
2. Unscrew bottle cap to fill with desired oil fragrance;
3. Guide tube into the bottle, and screw bottle into base of the diffuser unit.  
**NOTE:** There is a filter in the tube, do not remove;
4. Screw bottom cover onto the base of the diffuser unit.
5. Plug in unit to outlet. Make sure that unit is always upright to avoid leakage. Turn the plug clockwise if necessary.

## Operating instructions

APP version: Controlled by APP, more convenient and intelligent



- **Reset:**  
-Short press to restore the original password "8888"  
-Long press to restore factory setting.

- **Indicator**  
-When it is on, it means the machine is during the working period.

- ⚠ Do not mix the fragrance with any other liquid
- ⚠ Do not remove any piece or part of the diffuser
- ⚠ This diffuser is only for use with our Scent Collection

## Concentration and consumption

Grade	Work time(s)	Stop time(s)	Consumption(ml/h)
G1	15s	210s	0.09
G2	15s	100s	0.19
G3	15s	65s	0.30
G4	15s	45s	0.40
Customized	3-15s	45-900s	—

**Notes:** 1. The working time above of each grade is 15s.  
2. Different grade and oil may be with different consumption.

## Warning

1. Please read the user manual before operation & maintenance;
2. Keep the machine vertical, laying flat may cause oil overflow;
3. Make sure the machine without essential oil inside the bottle before transportation;
4. Tighten oil bottle before use;
5. Clean the machine with alcohol every 1-2 months;
6. Do NOT modify, disassemble or repair the machine. If any failure occurs, please contact our technical personnel.



## Troubleshooting

Before asking to have the machine repaired, please try to diagnose the problem first by following the instructions below.

Breakdown	Solution
Does not diffuse	-Check whether the mode you chose correct or not. -Check if the machine is in a "Non-Working period". -Air pump may be damaged, replace with a new one. -Check whether the tube is loose or not.
Low diffuse	-The atomizing core is blocked, clean with alcohol or change to a new atomizer heads. -Check whether the gasket is damaged/loose or missing. -Check whether the tube is loose or not connected.
Oil spill	-Check whether the bottle is loose. -Check if the gasket in the atomized head is damaged, loose or missing.
Oil sprinkle	-The atomized head is damaged: change to a new one. -The machine is tilted or laying flat, keep the machine vertical.
Abnormal noise	-The air pump is loose, retighten the pump -The air pump is damaged: replace.

## Equipment cleaning

**The machine needs to be cleaned when these conditions exist:**

1. You're changing to another kind of essential oil;
2. The atomization volume becomes weak.

**Cleaning steps:**

1. Pull out the atomized head.
2. Find a larger container and fill with industrial alcohol. Soak the atomized head and the bottle for 5-10mins.
3. Allow the atomizer head and the bottle to dry.

## FCC Statement

This equipment has been tested and found to comply with the limits for a Class B digital device, pursuant to part 15 of the FCC Rules. These limits are designed to provide reasonable protection against harmful interference in a residential installation. This equipment generates, uses and can radiate radio frequency energy and, if not installed and used in accordance with the instructions, may cause harmful interference to radio communications. However, there is no guarantee that interference will not occur in a particular installation. If this equipment does cause harmful interference to radio or television reception, which can be determined by turning the equipment off and on, the user is encouraged to try to correct the interference by one or more of the following measures:

- Reorient or relocate the receiving antenna.
- Increase the separation between the equipment and receiver.
- Connect the equipment into an outlet on a circuit different from that to which the receiver is connected.
- Consult the dealer or an experienced radio/TV technician for help.

Caution: Any changes or modifications to this device not explicitly approved by manufacturer could void your authority to operate this equipment.

This device complies with part 15 of the FCC Rules. Operation is subject to the following two conditions: (1) This device may not cause harmful interference, and (2) this device must accept any interference received, including interference that may cause undesired operation.

## RF Exposure Information

This equipment complies with FCC radiation exposure limits set forth for an uncontrolled environment. This equipment should be installed and operated with minimum distance 20cm between the radiator and your body.