

## EUT Constructional Details

Internal EUT Photo

Photo 1

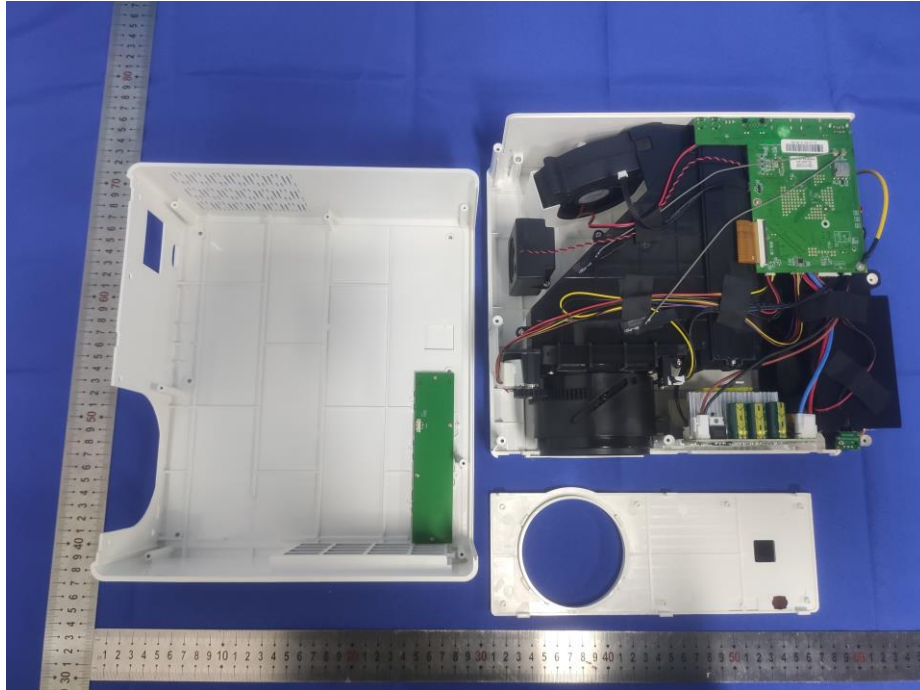


Photo 2

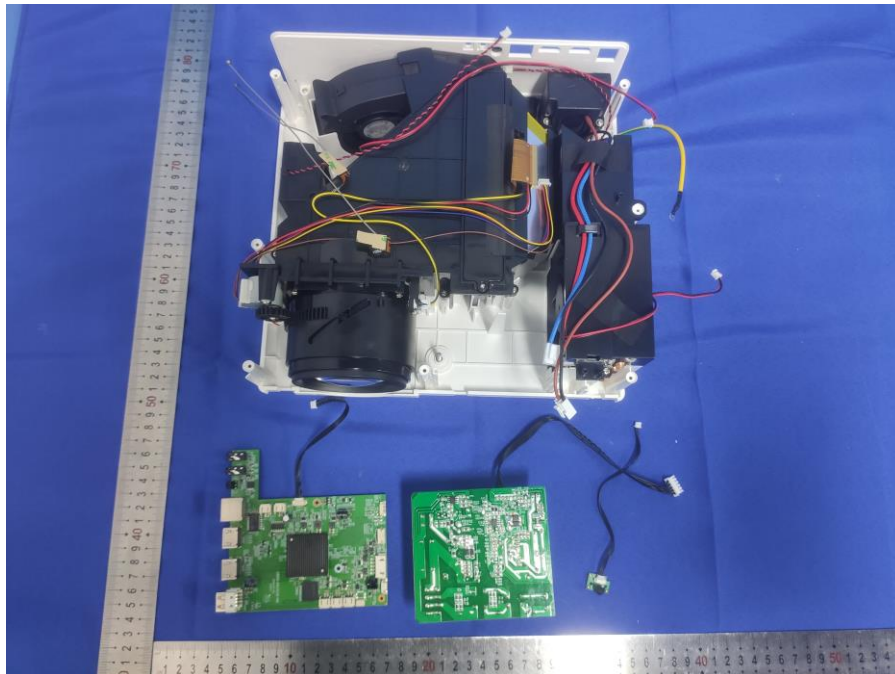


Photo 3

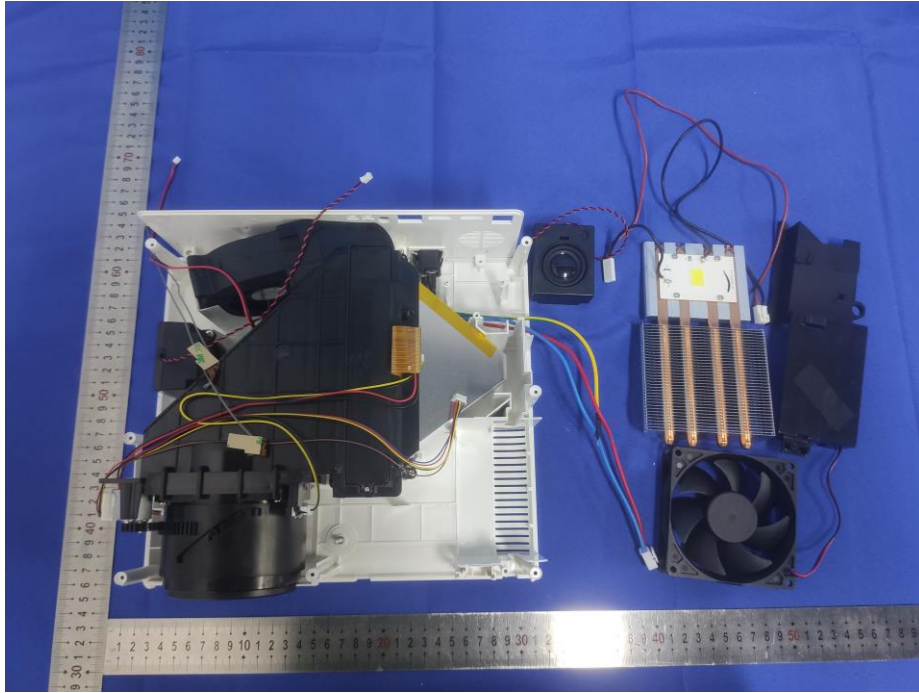


Photo 4



Photo 5

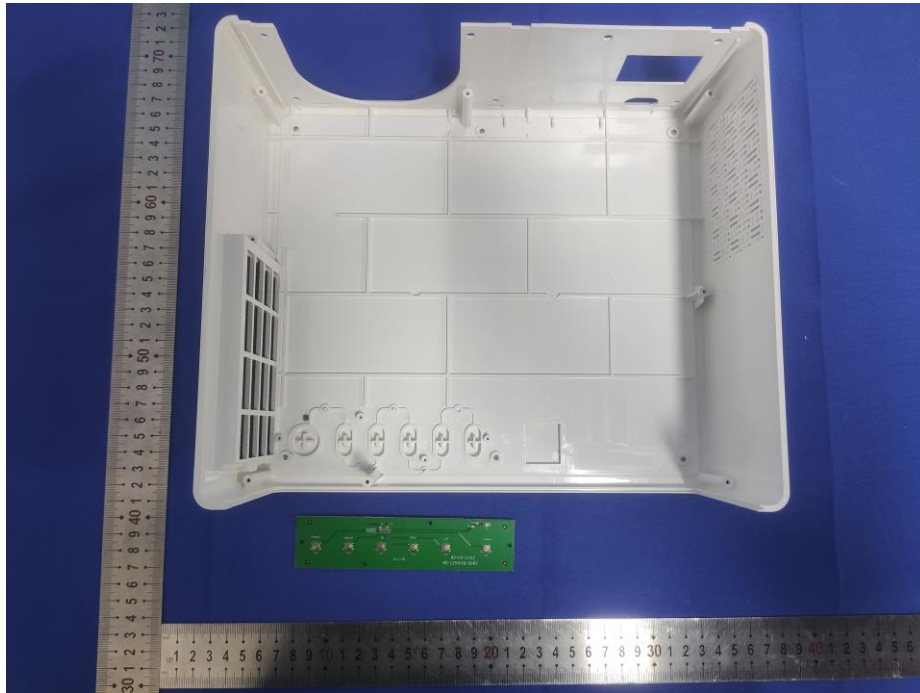


Photo 6

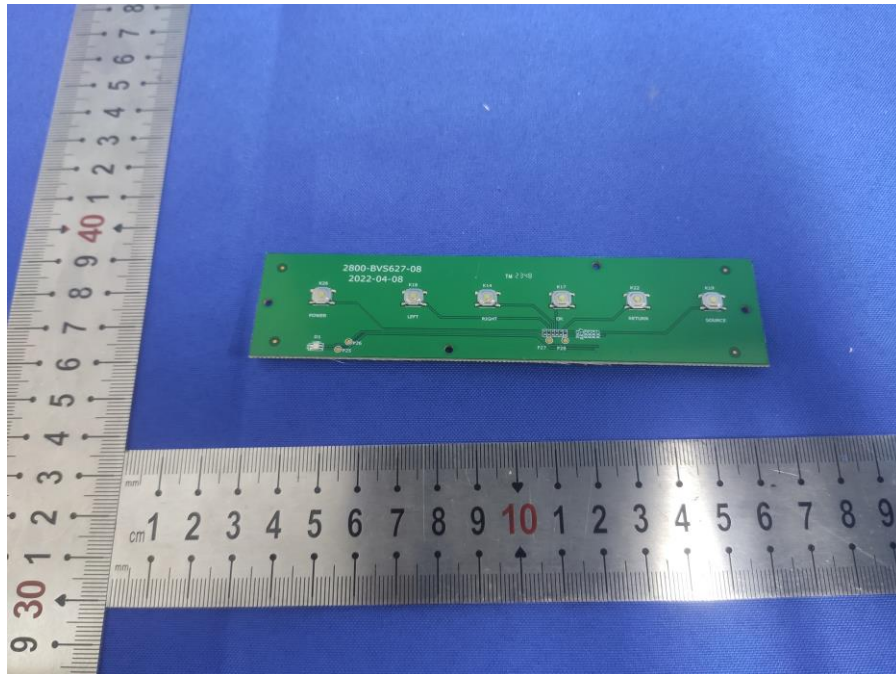


Photo 7

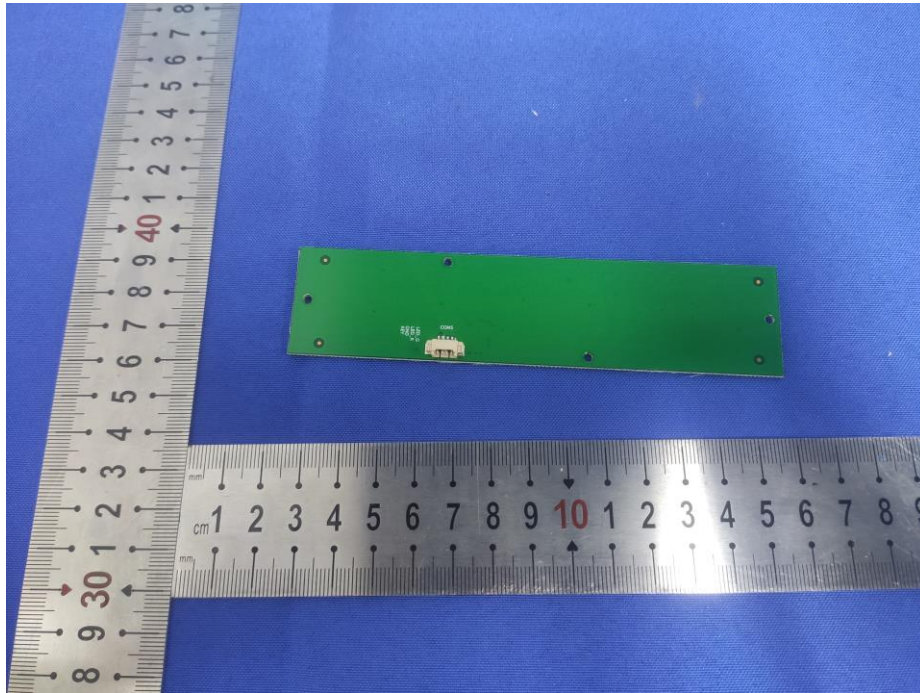
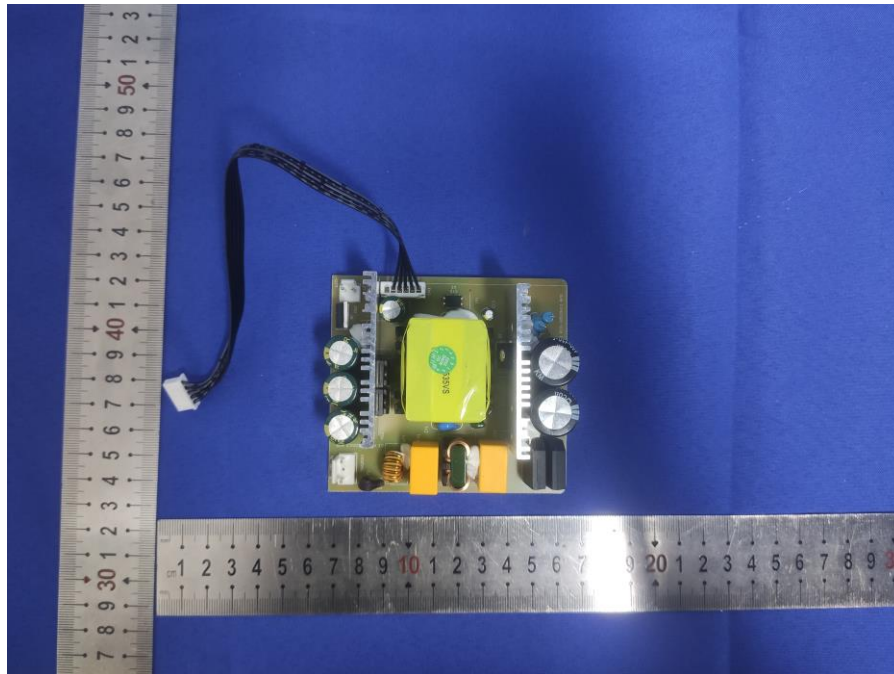


Photo 8





A photograph of a Raspberry Pi 4 Model B with a custom PCB and a black cable, placed next to a ruler for scale. The PCB is green and features a large black heat sink, a USB Type-C port, and a USB Type-A port. A black cable is connected to the board. The ruler shows the board is approximately 10 cm long.

Photo 13

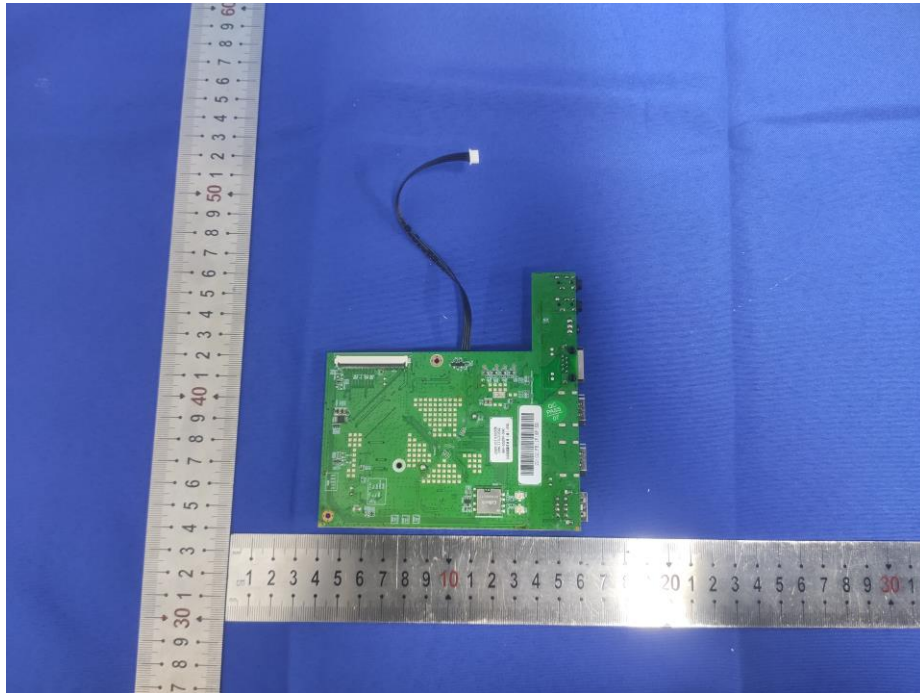
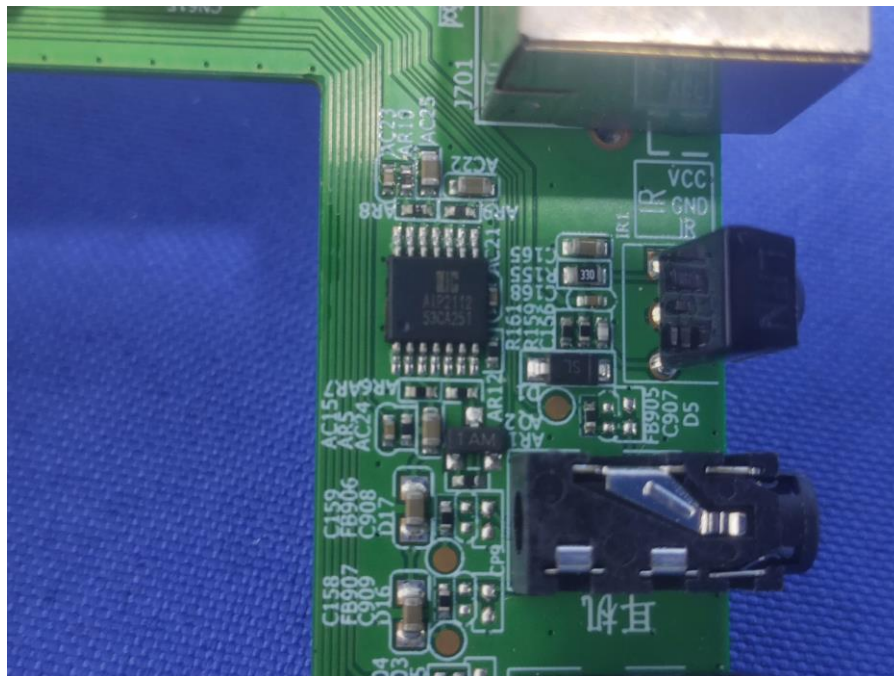


Photo 14



A photograph of a green printed circuit board (PCB) for a Raspberry Pi 4. The board is populated with various electronic components. At the top center is a large, square, silver-colored integrated circuit (IC), which is the Raspberry Pi 4 System on a Chip (SoC). Below it is a black rectangular chip, likely the LPDDR4-3200 RAM. To the left of the SoC is a black rectangular chip, possibly a video codec or a USB controller. The board features several connectors: a USB-C port on the left, a USB-A port in the center, and a micro-USB port on the right. There are also two black rectangular components, likely USB-to-UART bridges, and a small black rectangular component, possibly a USB-to-serial converter. The board is populated with numerous smaller components, including resistors, capacitors, and integrated circuits. The text "2800-A92520-0" and "V5627" are visible on the board. The board is placed on a blue textured surface.

Guangdong Asia Hongke Test Technology Limited  
B1/F, Building 11, Junfeng Industrial Park, Chongqing  
Road, Heping Community, Fuhai Street, Bao'an  
District, Shenzhen, Guangdong, China.

Photo 17

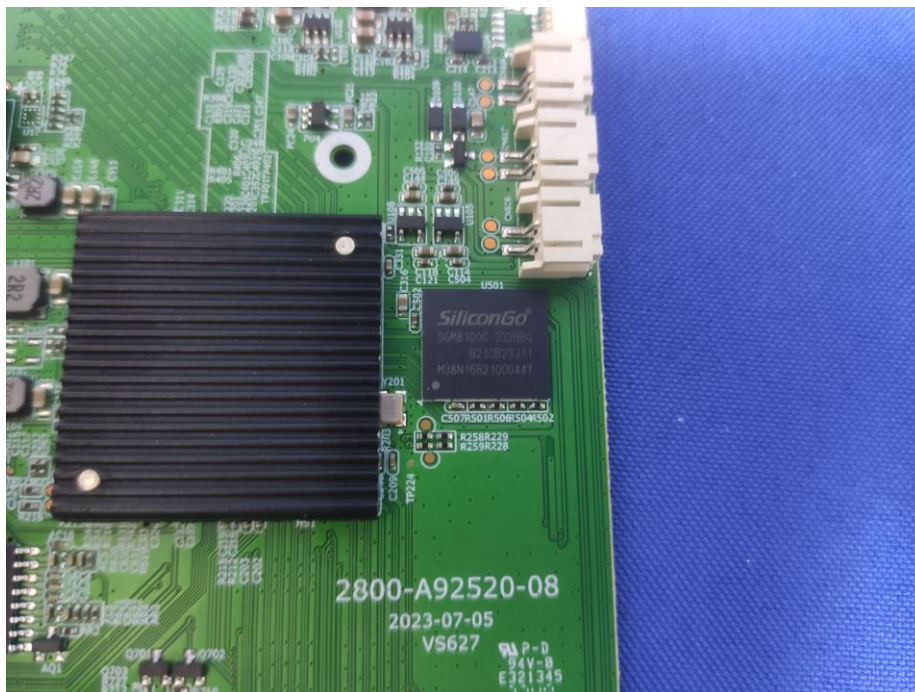


Photo 18

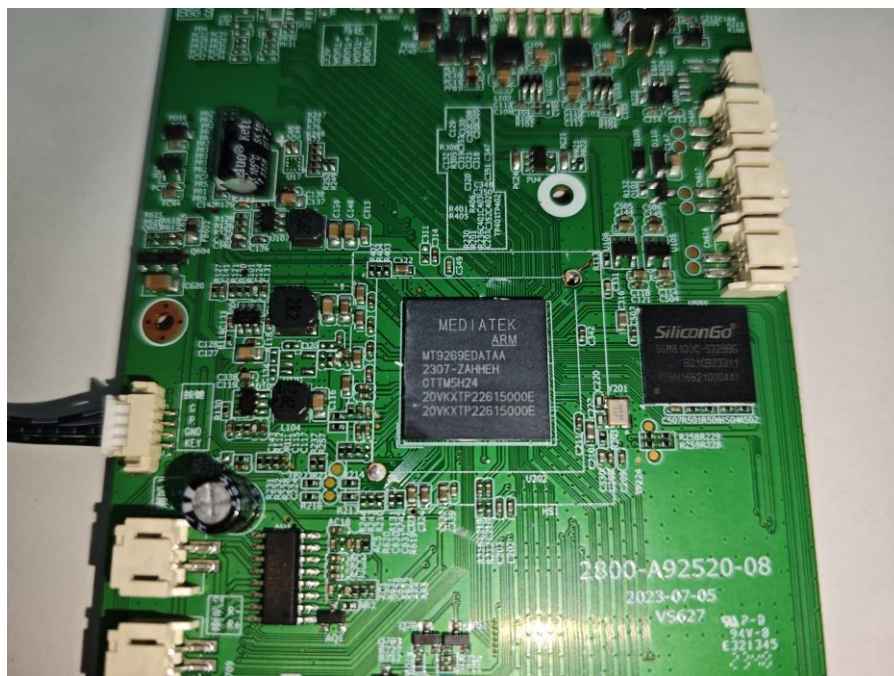


Photo 19

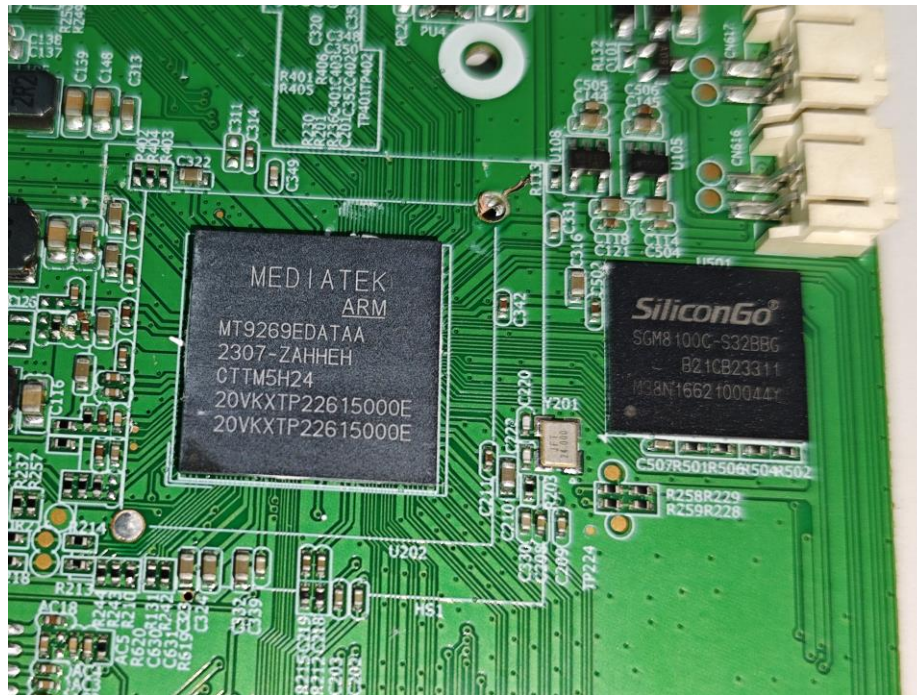


Photo 20



Photo 21

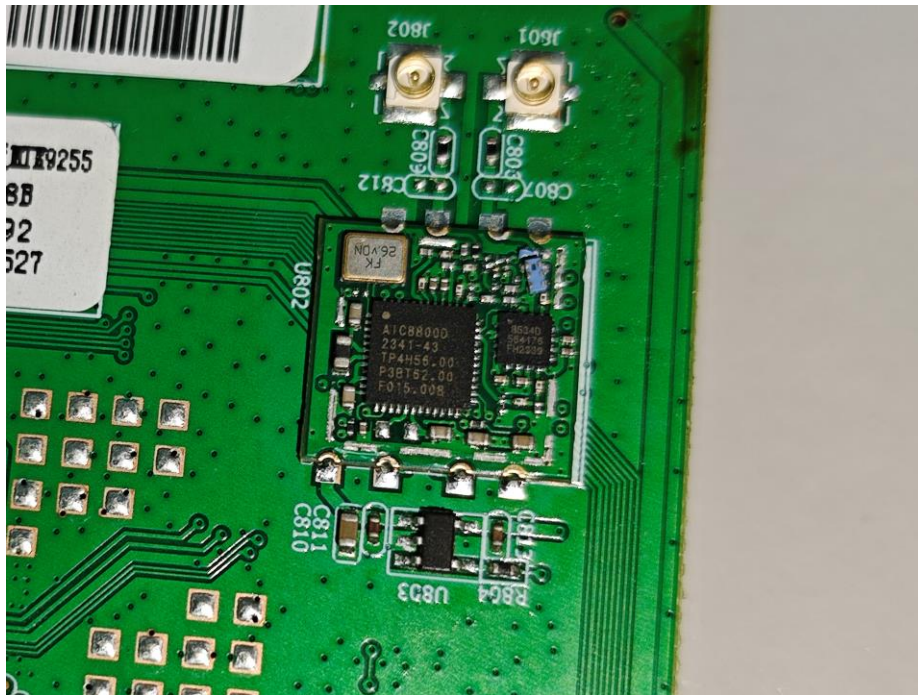


Photo 22

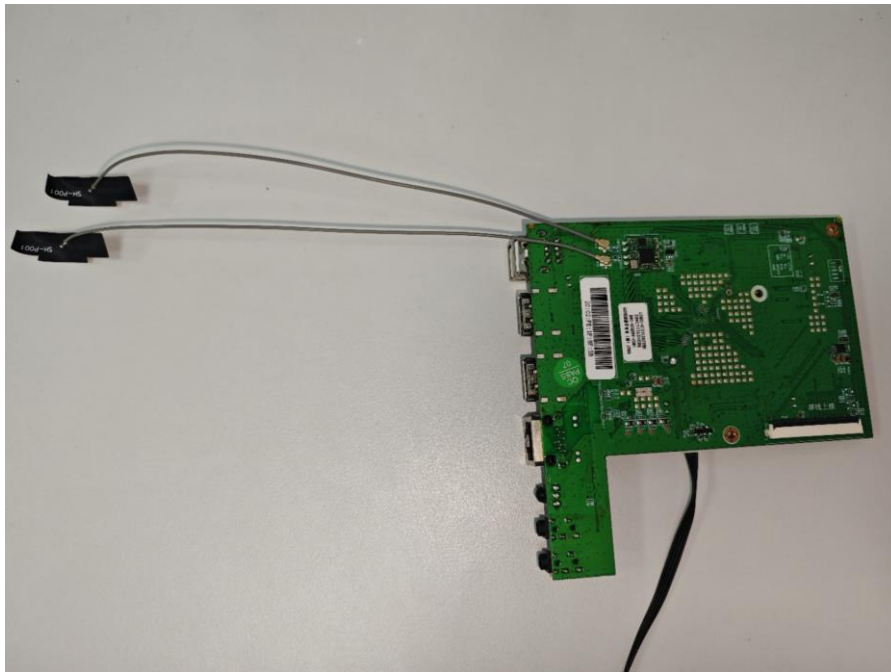


Photo 23

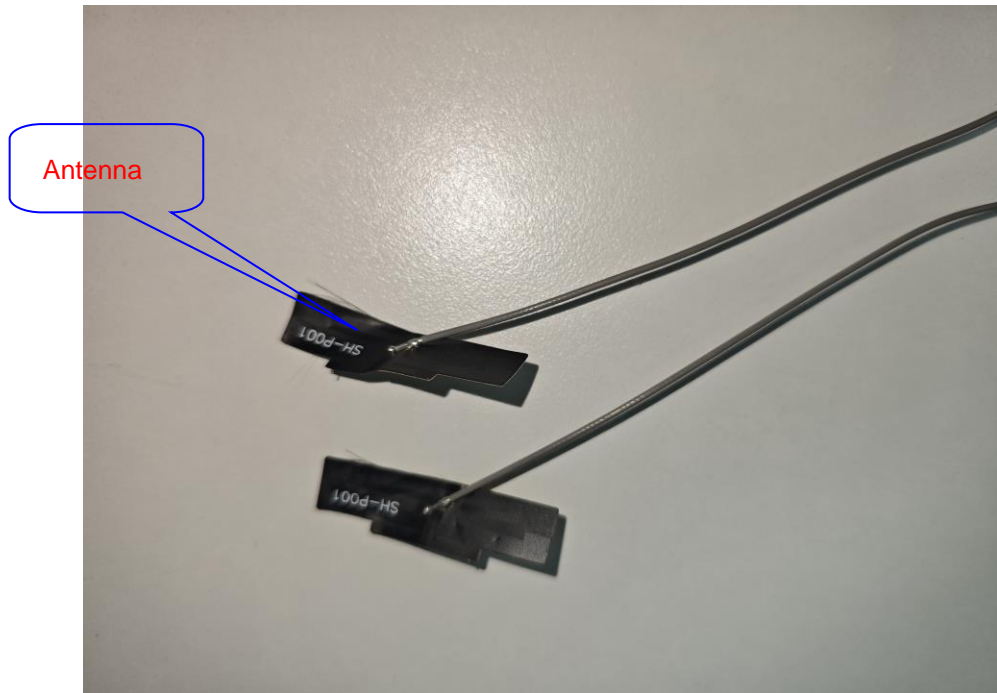
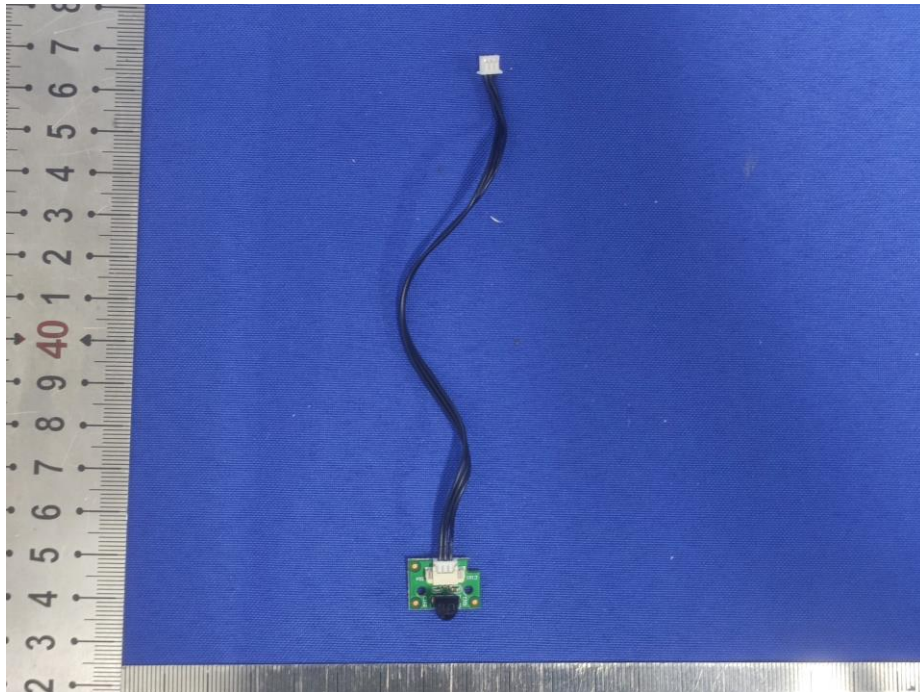


Photo 24



A photograph of a small green PCB with a black cable, placed next to a ruler for scale. The ruler shows the component is approximately 10 cm long.

A photograph of the disassembled components of a Raspberry Pi 4 Model B, laid out on a blue surface. The components include the main board, two cooling fans, a heat sink, a power supply, a USB-C cable, a micro SD card, a case, and various other accessories. A ruler is visible at the bottom for scale.

Guangdong Asia Hongke Test Technology Limited  
B1/F, Building 11, Junfeng Industrial Park, Chongqing  
Road, Heping Community, Fuhai Street, Bao'an  
District, Shenzhen, Guangdong, China.