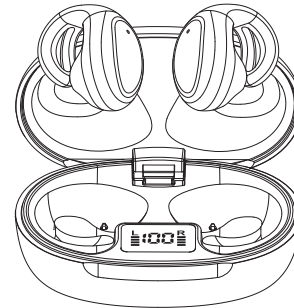


Open Ear Clip on Headphones  
A1 User Manual

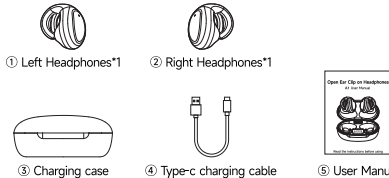


Read the instructions before using

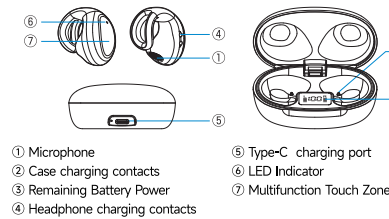
Product Specification

Product Name	A1
FCC ID	2BKR3-A1
Bluetooth Version	V5.4
Transmission Distance	Approx. 33FT (10M)
Charging Time	Approx. 1.5 Hours
Talk Time	Approx. 6 Hours
Standby Time	Approx. 100 Hours
Play Time	Approx. 6 Hours
Charging Port	Type-C
Rated Voltage	DC=5V1A
Battery Capacity	30/500mAh

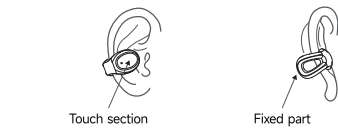
Product List



Product Manuals



Button Function Description



**Music:**  
**Pause/Play:** Touch the left/right Multi-function buttons twice  
**Previous song:** Touch and hold the left Multi-function buttons for 2 seconds  
**Next song:** Touch and hold the right Multi-function buttons for 2 seconds  
**Volume up:** Touch the right Multi-function buttons once  
**Volume down:** Touch the left Multi-function buttons once

**Call:**  
**Answer call:** Touch the left/right Multi-function buttons once  
**Hang up:** Touch the left/right Multi-function buttons twice  
**Reject call:** Touch and hold the left/right Multi-function buttons for 2 seconds

**Other functions:**  
**Power on:** Touch and hold left/right Multi-function buttons for 5 seconds  
**Power off:** Touch and hold the left/right Multi-function buttons for 5 seconds  
**Call Siri:** Touch the left Multi-function buttons 3 times

Charge Headphone

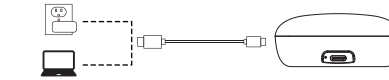
Please make sure the headphone is fully charged before use.

1. The headphone will charge automatically when you place it in the charging case.
2. Check the charging status of the headphone via the L/R indicator.



Charge Charging case

1. Use the supplied Type-C cable to connect the adapter or the USB port of your computer for charging.
2. While charging, the numbers on the charging case begin to flash.



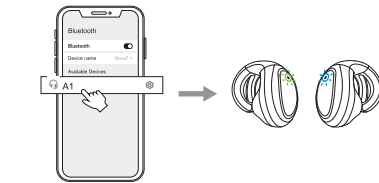
\* To avoid damaging the batteries in the headphone and charging case, be sure to charge them with a 5V/1A charger.

Bluetooth Connetion

1. When you remove the headphone from the charging case, the headset will automatically switch on and enter pairing mode.

\* When the headphone enters pairing mode, the indicator light on one side blinks blue and green alternately.

2. Turn on the Bluetooth function of your mobile phone.
3. Search for "A1" in the Bluetooth list and click to complete the initial pairing.  
(The voice message is "Connected".)



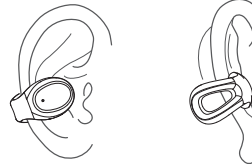
\* After the first pairing is completed, it will connect automatically after that.  
\* Some button operations cannot be performed when using a single earphone.  
\* If the connection is not completed within 5 minutes, the earphones will automatically switch off.

How to wear

- 1 Wear the headphone with the microphone facing the cochlea.



- 2 Adjust the position so that the speaker faces your earlobe.



\* If the headphone speaker is not close to the ear canal, the sound may be weak.

FCC Statement

This device complies with part 15 of the FCC Rules. Operation is subject to the following two conditions:

- (1) This device may not cause harmful interference, and
- (2) this device must accept any interference received, including interference that may cause undesired operation.

This equipment has been tested and found to comply with the limits for a Class B digital device, pursuant to part 15 of the FCC Rules. These limits are designed to provide reasonable protection against harmful interference in a residential installation. This equipment generates, uses and can radiate radio frequency energy and, if not installed and used in accordance with the instructions, may cause harmful interference to radio communications. However, there is no guarantee that interference will not occur in a particular installation. If this equipment does cause harmful interference to radio or television reception, which can be determined by turning the equipment off and on, the user is encouraged to try to correct the interference by one or more of the following measures:

- Reorient or relocate the receiving antenna.
- Increase the separation between the equipment and receiver.
- Connect the equipment into an outlet on a circuit different from that to which the receiver is connected.
- Consult the dealer or an experienced radio/TV technician for help.

**FCC Caution:** Any changes or modifications not expressly approved by the party responsible for compliance could void the user's authority to operate the equipment. This transmitter must not be co-located or operating in conjunction with any other antenna or transmitter.

RF Exposure

This device complies with FCC radiation exposure limits set forth for an uncontrolled environment. This equipment can be used as portable exposure without any restriction.

Reminders of important

1. It should be stored in a dry and well-ventilated environment to avoid affecting the performance of the product.
2. Do not use detergents containing irritating or organic solutions.
3. To successfully connect to Bluetooth, the distance between the mobile phone and the earbuds should not exceed 10 meters.
4. If you encounter problems such as poor Bluetooth connection or poor communication, please do not disassemble the earbuds body and accessories by yourself. Otherwise, warranty services will not be provided.
5. Be sure to use a 5V/1A charger when charging. If you use a high-speed charger, it will not be able to charge for a long time.
6. Make sure the earbuds battery is enough for normal use.

