

F8

USER MANUAL

I. Function and operation

1. Terminology and Function Description

- 1) Administrator Information: administrator's fingerprint, password, or IC card.
- 2) Unlock information: fingerprint, password, or IC card (including administrators and regular users).
- 3) "*" key: the clear/back key, when entering the password, click to clear the previous input, and press 4 times to clear the input.
- 4) The "#" key : a confirmation key.

2. Initial state

- 1) In the initial setting, any fingerprint, IC card, or password all can unlock.
- 2) After entering the administrator information, any fingerprint, card or password which be without input cannot be unlocked.
- 3) Language Changing (default English), enter shortcut keys in initialization mode, and press # to confirm:

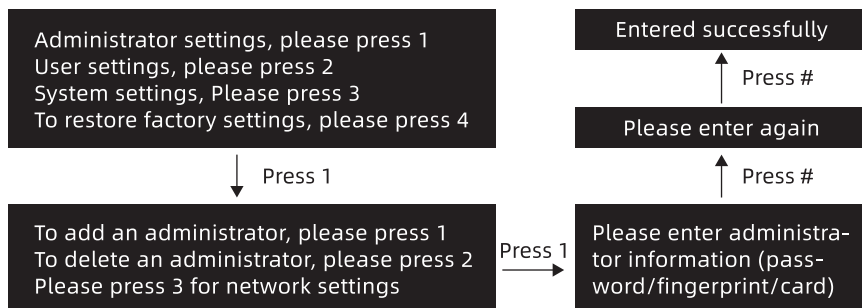
Shortcut keys	Language
555666880	English (factory default)
555666881	Vietnamese
555666882	Portuguese
555666883	Arabic
555666884	Russian
555666885	Thai
555666886	Spanish
555666887	Indonesian
555666888	French

3. Function management

- 1) In the initialization state, touch the number area, light up the screen, press the "*" key+123456, press the "#" to enter the function management menu. (The initial password for administrator management is "123456")

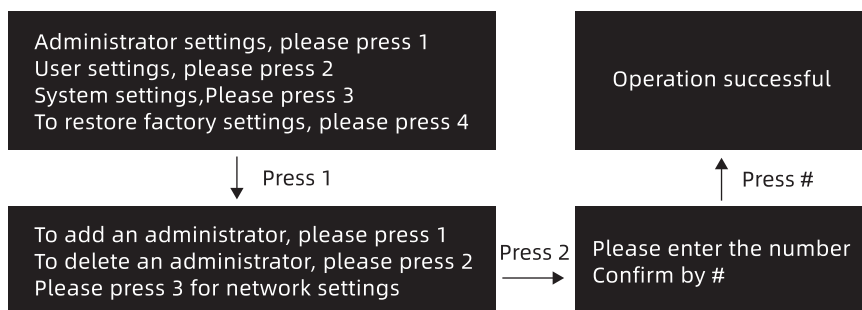
4. Administrator settings

1) Enter administrator information



Note: During the entry process, fingerprints need to be entered 4 times, and the number of digits for password entry is 6-8. To swipe the card, only one swipe is required; After entering, press the "*" key to return to the previous menu or exit.

2) Delete administrator information



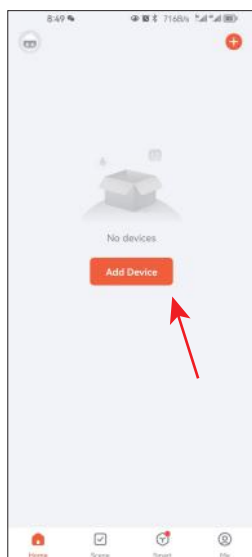
5. App connection

The Operation Instruction of Network Connection of Tuya WIFI

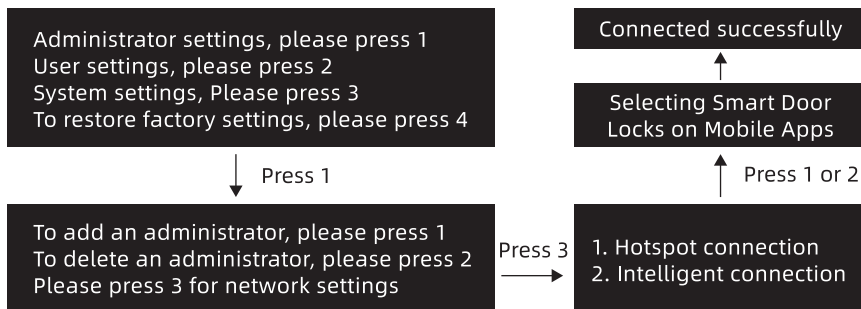
1. First, switch on cellular data network or connect to WiFi network. Then, download the app called "Tuya Smart" from the "app market". and open, register and login it.



2. After login, click "Add Device" or click the plus sign at the upper right corner. Choose "Camera & Lock" "Lock(Wi-Fi)". Input the name and password of WiFi network(or mobile hotspot) and click "Next". Click "Confirm the indicator is blinking rapidly." Choose "EZ Mode". TIPS:The third step of smart lock operation networking needs to be performed as soon as possible after the second step.



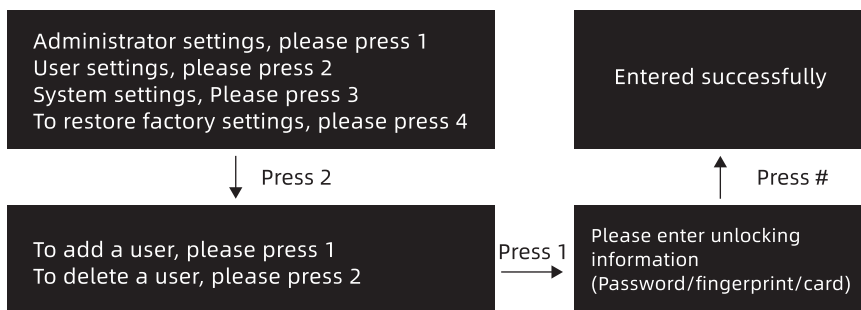
3. Networking settings



4. Wait for the connection, If the user succeeds in the network connection, the user can hear "Successfully added" in the app, and click "Done". In the meantime, The door lock will voice announce successful operation.

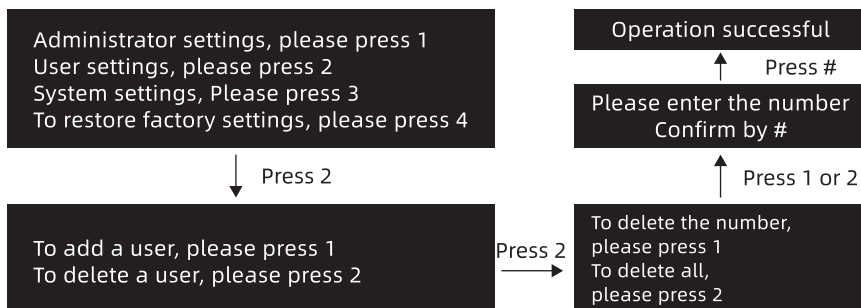
6. User settings

1) Add user information



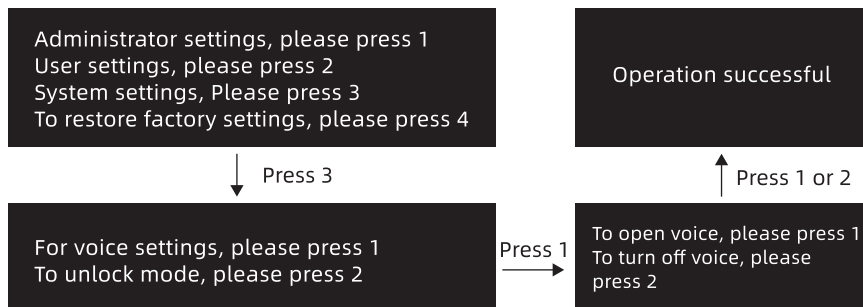
Note: During the entry process, fingerprints need to be entered 4 times, and the number of digits for password entry is 6-8. To swipe the card, only one swipe is required; After entering, press the "*" key to return to the previous menu or exit.

2) Delete User

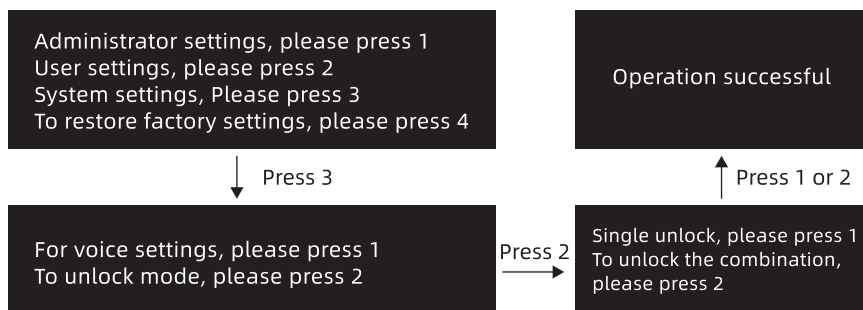


7. System settings

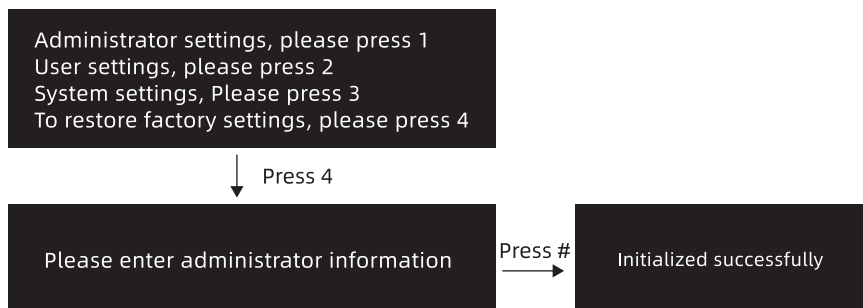
1) Voice settings



2) Unlock mode



8. Restore factory settings



II. Other instructions

1. If unauthorized unlocking information is used for more than 5 consecutive incorrect inputs within 5 minutes, the system will automatically enter an invalid input state, which lasts for more than 90 seconds.
2. Password anti peeping function: When opening the door with a password, enter the password as follows: XXX password XXX; You can add some irrelevant codes before and after the password, and then press # to confirm. The password must be included in the input.
3. If there is no action taken after 10 seconds of each operation, the system will automatically exit.
4. After the voltage is lower than 4.8V, it will automatically alarm every time the door is unlocked. After the alarm, the door lock can be unlocked 200 times. After the number is exceeded, each unlock will be delayed for 5 seconds. Be sure to replace the new battery before the number of unlocks.
5. Initialization Settings: Press and hold the settings button on the back panel for 6 seconds to enter system initialization. After initialization is completed, all unlocking information and records will be cleared (operate with caution).

III. After-sales service

We offer a 30-day hassle-free return service, one-year warranty, and lifetime technical support. If you have any questions about installation or app problems, please contact us at:

Dizun Us@163.com



Static current	≤60uA
Dynamic current	≤180mA
Fingerprint/Password/Card Capacity	A total capacity of 300 sets, 9 sets for administrators, and 291 sets for regular users
QTY of fingerprints	100
Fingerprint collection device	Semiconductor
Fingerprint comparison time	≤1 second
Fingerprint sensing time	≤0.5 second
Fingerprint rejection rate	≤0.1%
Fingerprint recognition rate	≤0.0001%
Fingerprint recognition angle	360 °
Power supply method	4.5V~6.0V
Power supply type	AA battery*4
Low voltage alarm voltage	4.8±0.2V
Password length	6-8 digits
Virtual password	20 digits
Unlock response time	≤1 second
Working temperature	-25°C~70°C
Working relative humidity	0%~93%RH
Card type	M1 card
Antistatic interference level	Air discharge: +15KV Contact discharge: ± 8KV
Unlocking method	Fingerprint+password+IC card+temporary password +APP remote unlocking (Tuya)
Alarm function	Supports 5 trial and error alarms, anti pry alarms, and low voltage alarm functions
Emergency power supply	5V USB emergency power supply

FCC Caution:

This device complies with part 15 of the FCC Rules. Operation is subject to the following two conditions:
(1) this device may not cause harmful interference, and (2) this device must accept any interference received, including interference that may cause undesired operation.

Any changes or modifications not expressly approved by the party responsible for compliance could void the user's authority to operate the equipment.

NOTE: This equipment has been tested and found to comply with the limits for a Class B digital device, pursuant to Part 15 of the FCC Rules. These limits are designed to provide reasonable protection against harmful interference in a residential installation. This equipment generates, uses and can radiate radio frequency energy and, if not installed and used in accordance with the instructions, may cause harmful interference to radio communications. However, there is no guarantee that interference will not occur in a particular installation.

If this equipment does cause harmful interference to radio or television reception, which can be determined by turning the equipment off and on, the user is encouraged to try to correct the interference by one or more of the following measures:

- Reorient or relocate the receiving antenna.
- Increase the separation between the equipment and receiver.
- Connect the equipment into an outlet on a circuit different from that to which the receiver is connected.

-- Consult the dealer or an experienced radio/TV technician for help.

To maintain compliance with FCC's RF Exposure guidelines, This equipment should be installed and operated with minimum distance between 20cm the radiator your body: Use only the supplied antenna.

FCC ID: 2BKPY-F8