

Smart Riding Backpack

Operation instruction

Product brief introduction

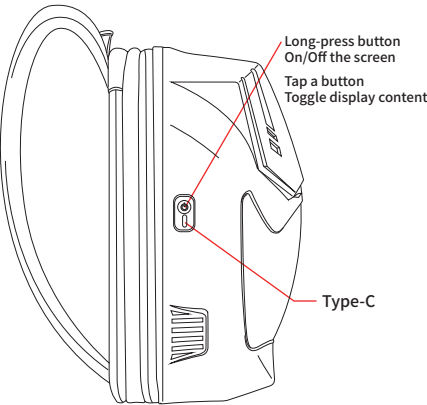
- 1. After the mobile phone is connected to the Bluetooth of the Knapsack, the display content of the knapsack screen can be changed in real time through the app. A large number of built-in materials are available for users to choose from, and the material library materials are updated periodically. Users can also diy text to backpack display.
- 2. The backpack screen needs 5V/2A power supply, please find the USB power supply port in the bag and plug it into the mobile power supply to power the backpack.

Notice

- 1.Do not bend LED screen, avoid the LED in a humid environment
- 2.Contains precision electronic components, please keep dry
- 3.No hard press on the LED screen part
- 4.Please avoid sharp objects scratching the backpack
- 5.Do not expose the backpack to corrosive substances
- 6.Please use a regular manufacturer's power bank
- 7.Please save the QR code inside the backpack

Side buttons

The side buttons can be used to turn on and off the device and display the battery level (long press to turn it off, short press to switch the display screen content). The Type-C interface supports charging and discharging functions (only original power banks are supported).



Download and install the mobile app

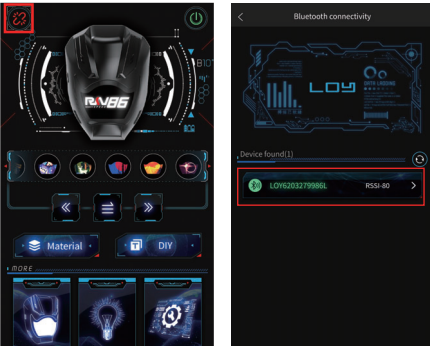
To experience the full functionality of the product, be sure to install "LOY EYES" to your phone

- 1. Scan this QR code to enter the download interface. According to your phone's operating system, download the corresponding installation package and install it in your phone.
- 2. Allow authorization and permissions for the first use after successful installation; otherwise, some functions of the APP cannot be used normally.



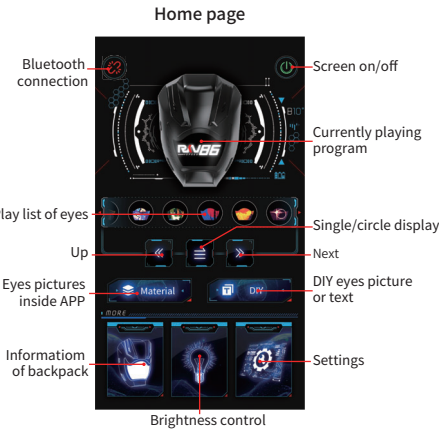
Device attachment

- 1. Please pay attention! First, insert your backpack into the power bank and make sure the screen lights up properly. Second, turn on your phone's "Bluetooth" and "Location Information". Finally launch the "LOY EYES" APP.
- 2. After "LOY EYES" is successfully started, click this icon to enter the Bluetooth connection page
- 3. Tap the device number of your backpack to connect the device.

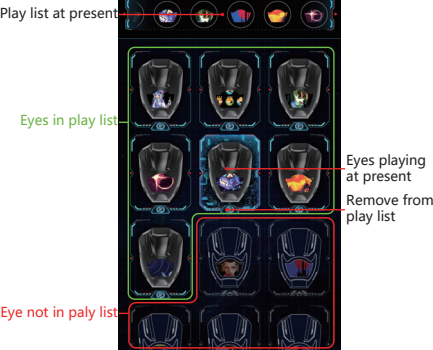


App function

The page function may change according to the version of your product and software. The specific function is subject to the operation interface of your mobile phone



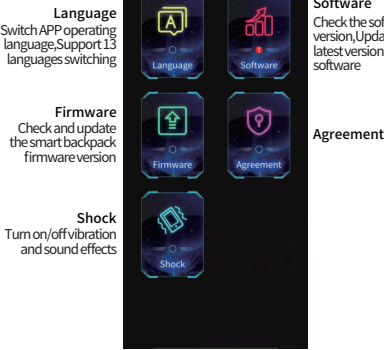
Material library



Self-built program

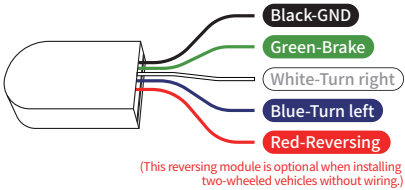


Set up



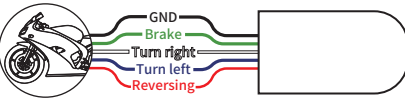
Optional accessory: Linkage Hardware

1. Product Reference View



2.Installation of Linkage Module

- (1)Connect the product signal line in the package to the corresponding signal line of the car / two-wheeled vehicle using a Stripping-free wire terminal.



3. Product pairing

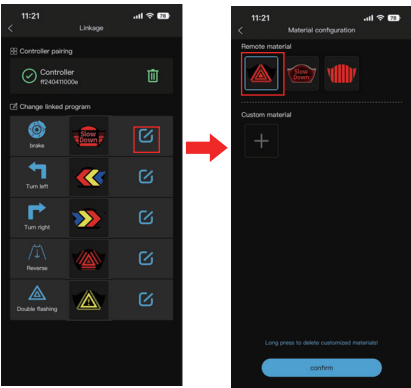
- (1) connecting the device, access the [Linkage] interface in the [Set up] section of the app.



- (2) the locomotive linkage interface, click on [Start pairing], and follow the prompts to perform the corresponding operation on the locomotive. The backpack will display the program based on the corresponding operation, indicating a successful pairing.



- (3) You can click the edit button to customize the editing linkage display effect.



FCC Warning:

This equipment has been tested and found to comply with the limits for a Class B digital device, pursuant to part 15 of the FCC Rules. These limits are designed to provide reasonable protection against harmful interference in a residential installation. This equipment generates, uses and can radiate radio frequency energy and, if not installed and used in accordance with the instructions, may cause harmful interference to radio communications. However, there is no guarantee that interference will not occur in a particular installation. If this equipment does cause harmful interference to radio or television reception, which can be determined by turning the equipment off and on, the user is encouraged to try to correct the interference by one or more of the following measures:

- Reorient or relocate the receiving antenna.
- Increase the separation between the equipment and receiver.
- Connect the equipment into an outlet on a circuit different from that to which the receiver is connected.
- Consult the dealer or an experienced radio/TV technician for help.

Caution: Any changes or modifications to this device not explicitly approved by manufacturer could void your authority to operate this equipment.

This device complies with part 15 of the FCC Rules. Operation is subject to the following two conditions:

(1) This device may not cause harmful interference, and (2) this device must accept any interference received, including interference that may cause undesired operation.

This equipment complies with FCC radiation exposure limits set forth for an uncontrolled environment. This equipment should be installed and operated with minimum distance 0cm between the radiator and your body.