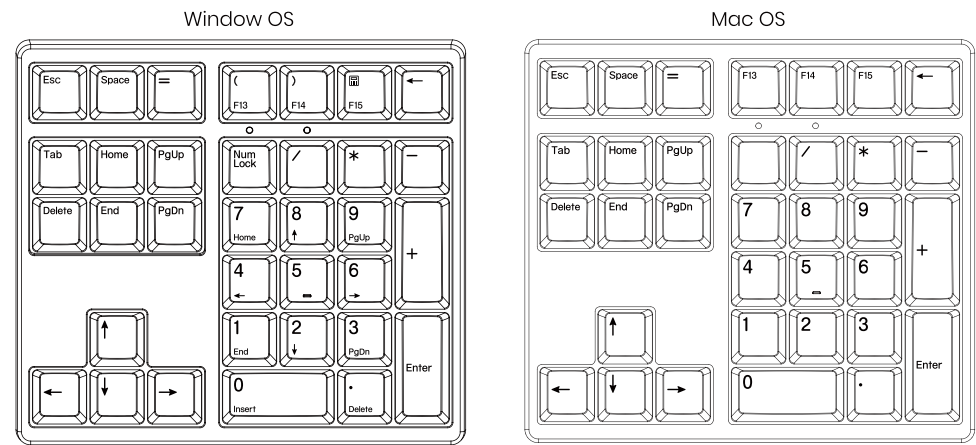


Description in different operating systems:

Through the operating system (Windows or Mac) switch on the bottom of the keypad, you can switch some key functions of the keypad to match the operating system of the connected computer.



Automatic sleep power-saving mode:

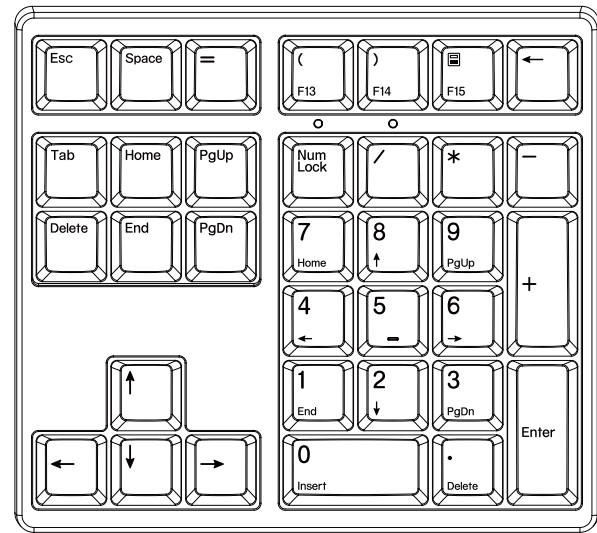
If the keypad does not operate within 5 minutes, it will automatically enter sleep mode. Press any key to wake up the keypad.

Kisnt

KN34GT
USER MANUAL

Kisnt

34-Key 2.4G Wireless Mechanical Number Pad

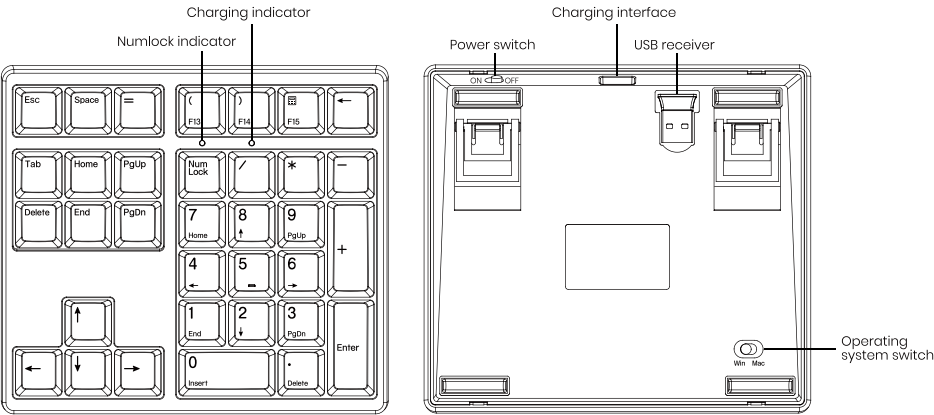


Package Contents:

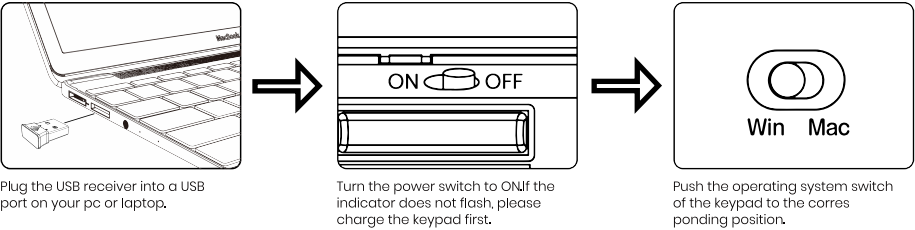
- 1*Mechanical number pad
- 1*2.4G wireless receiver
- 1*USB-C to USB-A charging cable
- 1*User manual

Product Specifications:

Product size:149×134×39mm
The number of keys:34 keys
Battery capacity:500mAh
Charging interface :Type-C
Rated voltage:3.7~4.2V
Current:<5mA
OS requirements: Windows XP or later, Mac OS



Installation:



Product Features:

- | | | |
|---------------------------|------------------------------|-----------------------|
| 34 Keys Layout | Win/Mac OS | PBT Keycaps |
| Gateron Mechanical Switch | Hot-Swappable | Multiple Foam Padding |
| 2.4G Wireless Connection | Rechargeable Lithium Battery | Auto Sleep |

Charging tips:

- 1.The keypad is equipped with a rechargeable lithium battery, please charge it before first use.
- 2.Charge the keypad when the charging indicator light flashes quickly.
- 3.The charging indicator would stay green while charging and turn off after fully charged.
- 4.Please use a charger below 5V or a computer USB port to charge the keypad. Otherwise, it may cause the keypad to shut down.
- 5.The USB cable serves for charging only. You can't use it to operate your device.

FCC Warning Statement:

This equipment has been tested and found to comply with the limits for a Class B digital device, pursuant to part 15 of the FCC Rules. These limits are designed to provide reasonable protection against harmful interference in a residential installation. This equipment generates, uses and can radiate radio frequency energy and, if not installed and used in accordance with the instructions, may cause harmful interference to radio communications.

However, there is no guarantee that interference will not occur in a particular installation. If this equipment does cause harmful interference to radio or television reception, which can be determined by turning the equipment off and on, the user is encouraged to try to correct the interference by one or more of the following measures:

- Reorient or relocate the receiving antenna.
- Increase the separation between the equipment and receiver.
- Connect the equipment into an outlet on a circuit different from that to which the receiver is connected.
- Consult the dealer or an experienced radio/TV technician for help.

Caution: Any changes or modifications to this device not explicitly approved by manufacturer could void your authority to operate this equipment.

This device complies with part 15 of the FCC Rules. Operation is subject to the following two conditions: (1) This device may not cause harmful interference, and (2) this device must accept any interference received, including interference that may cause undesired operation.

The device has been evaluated to meet general RF exposure requirement.