

# USER MANUAL

---

## INTERCOM HELMET BLUETOOTH HEADSET



## Product specification

Bluetooth version 5.2

Working distance 500 meters

Standby time 100 hours

Working hours 16 hours

Charging time approx. 1 hour

Charging interface TYPE-C interface

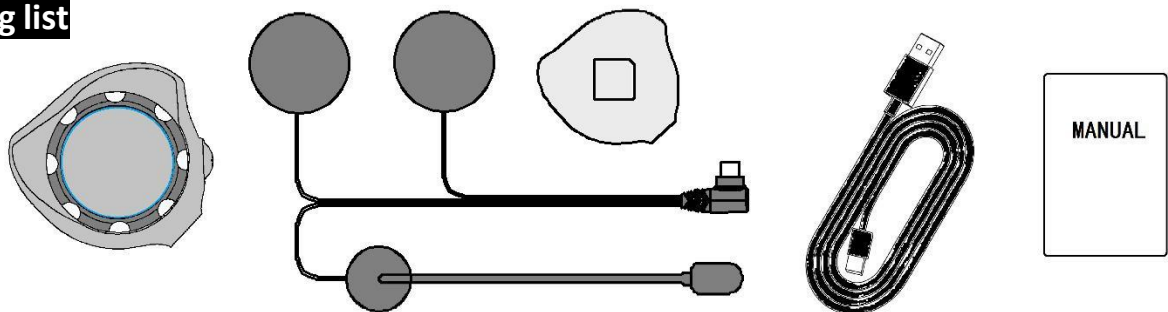
Power Requirements 5V=1A

Battery type Rechargeable lithium polymer battery

Operating Temperature 4°F~130°F (-10°C~50°C )

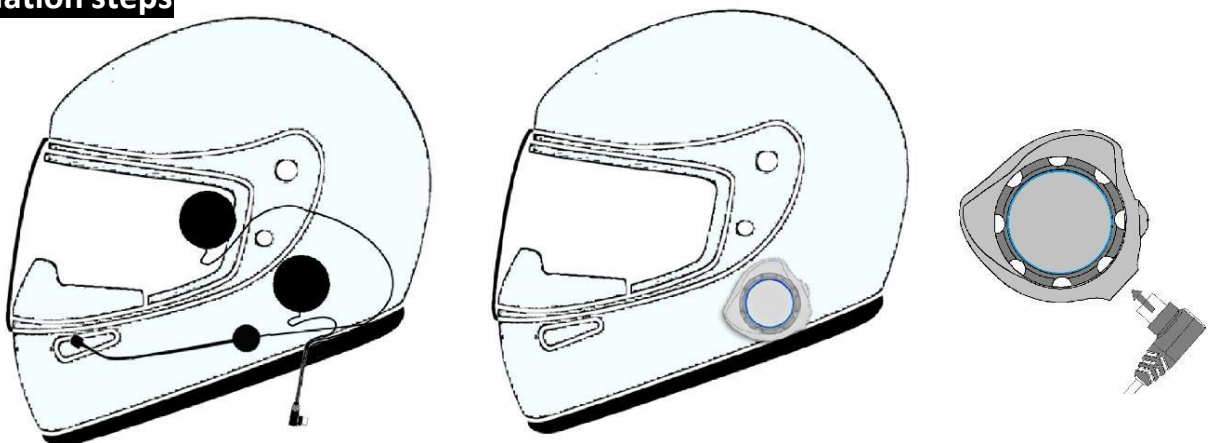
\*Working time and intercom working distance are subject to deviation due to the influence of environment and climate, etc. All technical information is subject to actual performance.

## 1. Packing list



Host \*1 Headphone cable \*1 Velcro \*1 Charging cable \*1 Instruction manual \*1

## 2. Installation steps



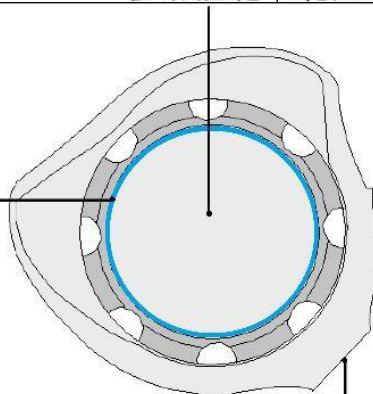
Attach the speakers to the inside of the helmet in the ear position, attach the microphone pole to the left side of the helmet in the proper position, make sure the microphone is in the mouth position, and organize the wiring harness and liner.

Use the Velcro to fix the main unit in a suitable position, then insert the plug into the headphone socket, the installation is complete.

多功能键 (旋钮)

### 3.Products

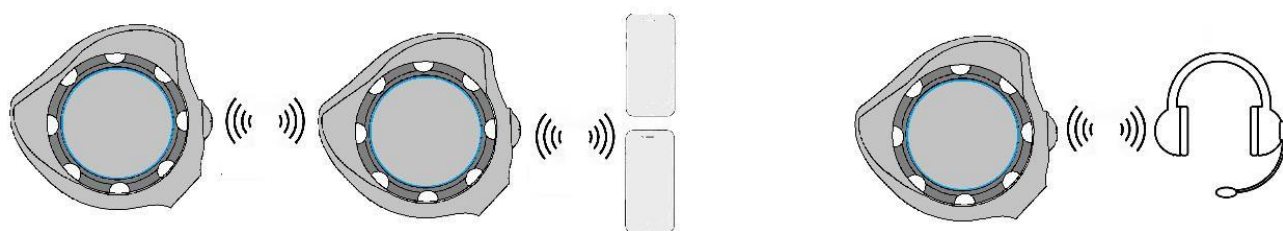
指示灯



开机键

耳机充电插口

### 4. Function Introduction



Two car communication 500 meters Simultaneous connection of two cell phones

Connection of other brands of Bluetooth headset



Bluetooth Voice Calls Voice Alerts Stereo



## 5. Operating instructions

### 5.1 Boot key

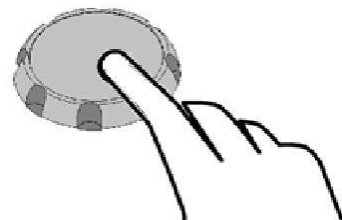
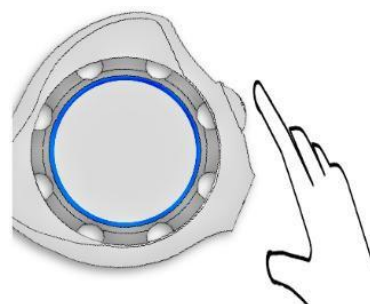
- . **Power On** ----- In the off state, press and hold for 2 seconds.
- . **Shutdown** ----- Press and hold for 5 seconds while the power is on.
- . **Pairing Mode** - In the off state, press and hold for 5 seconds; in the on state, press and hold the on key and multi-function key at the same time.
- . **Starting Intercom Pairing** ----- two Bluetooth are in pairing mode. click.
- . **Starting an Intercom Call** ----- two Bluetooth intercom pairs successfully. click.
- . **Ending an Intercom Call** - Intercom status clicks and when disconnected you will hear 'Intercom disconnected.
- . **Rejecting Calls** ----- When an incoming call comes in, press and hold for 2 seconds to reject the answer.
- . **Functions of the On key and other key combinations**

**1. Clear the pairing record** - Power on button + "-" to clear the pairing record, next time you turn on the phone, you need to re-pair.

**2. Auto answer toggle** - On button + "+".

### 5.2 Multi-function keys

- . **Answering Calls** ----- When an incoming call comes in, click Answer or 8 seconds without any action to answer it automatically.
- . **Switching between Bluetooth headset and cell phone during a phone call** - double tap in the call state and the sound switches to the cell phone.



. **To terminate a call** ----- call status, click.

. **Music Playback Pause** - Music Playback Ready status. click.

. **Voice call** ----- When there is no call, press and hold for 2 seconds to activate the voice assistant.

. **Starting FM** ----- No Calls When there is no music, double-tap.

Multi-function key combination + "+" --- Language switching , Pairing mode Press and hold the multi-function key while rotating up.

### 5.3 Multi-function keys turned upwards as "+"

. **Volume Up** ----- Turn up the hold and the volume will increase in steps.

There is a 'beep' at maximum volume.

. **Previous Song** ----- When playing music, a turn will switch the previous song.

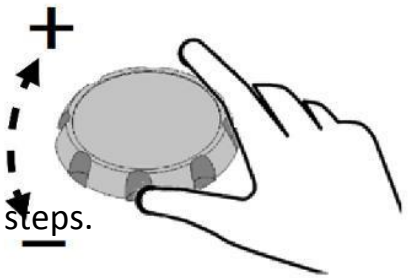
. **FM Tuning** - When in FM mode, turn up a bit to search for stations.

### 5.4 Multi-function keys turn down to "-"

. **Volume Reduction** ----- Turn all the way down and leave it on, and the volume will decrease in steps.

. **Next Song** ----- When playing music, turn down a bit to switch to the next song.

. **FM Tuning** - When in FM mode, turn down a bit to search for stations downward.



## 6. Bluetooth working status prompt

. **Power On** ----- Short press 2s to power on the unit when you hear 'Power On', blue light blinks.

. **Shutdown** ----- hears 'Power Off' and the red light is always on and then goes off.

. **Pairing Mode** ----- hear Pairing, the red and blue lights flash alternately.

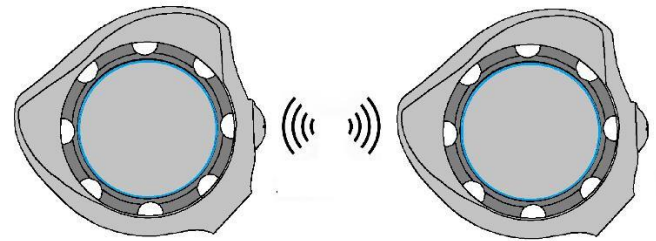
. **Connecting a Bluetooth device** - hear bluetooth connected purple light breathing, disconnect hear bluetooth disconnected, blue light blinking.

. **Intercom** ----- Intercom search status green light fast flashing, hear 'Intercom Connected' into the intercom state, green light breathing; intercom hang up hear 'Intercom disconnected' Intercom disconnected' is heard, and the light will be restored to the state before connection.

. **Clearing the pairing record** - When you hear dingdong, the green light blinks 3 times and then the blue light blinks.

. **Charging Status** ----- Red light is always on when charging, full to green light is always on.

. **Low Battery Alarm** ----- When the power is low during use, every 30 seconds prompts 'Battery Low' at the same time the indicator red light flashes fast 3 times, and the current working status indicator is displayed normally.



## **7. Matching method**

### **7.1 Y3 Two ways to enter pairing mode**

**Way 1:** When Bluetooth is off, long press the on button for 5 seconds;

**Way 2:** While Bluetooth is on, press and hold the On button and Multi-function button at the same time.

### **7.2 Bluetooth pairing of two Y3s**

**Step 1:** Place the two Bluetooths within 1 meter of each other and both enter pairing mode;

**Step 2:** Click the power on button of any Bluetooth to automatically search for pairing and hear 'Intercom Cnnected' after successful pairing.

### **7.3 Y3 Bluetooth and Cell Phone/GPS/MP3 Pairing**

**Step 1:** Place both devices within 1 meter of each other and both enter pairing mode;

**Step 2:** Open your cell phone or other devices Bluetooth search for Bluetooth devices, select Y3, click connect, connect successfully will hear 'Bluetooth connected'.

### **7.4 Pairing with other branded products**

**Step 1:** Place both devices within 1 meter of each other and both enter pairing mode;

**Step 2:** Click the Y3's power on button and it will automatically search for Bluetooth for pairing (green light blinks fast) and hear 'Intercom Connected'.

## **8. Functional prioritization**

**Level 1: telephone or adapter intercom**

**Level II: Bluetooth intercom**

**Level III: Cell phone music**

**Level IV: FM**

## **9. Caveats**

1. If you do not use the product for a long time, please store it in a dry place and charge it regularly (once every three months) to ensure that it can work properly;
2. Do not expose this product to open flame to avoid explosion.

This device complies with part 15 of the FCC Rules. Operation is subject to the following two conditions: (1) this device may not cause harmful interference, and (2) this device must accept any interference received, including interference that may cause undesired operation.

Any changes or modifications not expressly approved by the party responsible for compliance could void the user's authority to operate the equipment.

NOTE: This equipment has been tested and found to comply with the limits for a Class B digital device, pursuant to Part 15 of the FCC Rules. These limits are designed to provide reasonable protection against harmful interference in a residential installation. This equipment generates, uses and can radiate radio frequency energy and, if not installed and used in accordance with the instructions, may cause harmful interference to radio communications. However, there is no guarantee that interference will not occur in a particular installation.

If this equipment does cause harmful interference to radio or television reception, which can be determined by turning the equipment off and on, the user is encouraged to try to correct the interference by one or more of the following measures:

- Reorient or relocate the receiving antenna.
- Increase the separation between the equipment and receiver.
- Connect the equipment into an outlet on a circuit different from that to which the receiver is connected.
- Consult the dealer or an experienced radio/TV technician for help.

The device has been evaluated to meet general RF exposure requirement. The device can be used in portable exposure condition without restriction