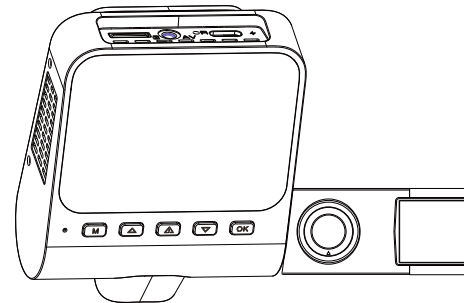


# GEARiT



## **4K 2-Channel Dash Cam with Color Display**

### **User Manual**

GI-DASH-2CH-4K-BK

**FCC Compliance Statement**


This equipment has been tested and found to comply with the limits for a Class B digital device, pursuant to Part 15 of the FCC Rules. These limits are designed to provide reasonable protection against harmful interference in a residential installation. This equipment generates, uses, and can radiate radio frequency energy and, if not installed and used in accordance with the instructions, may cause harmful interference to radio communications. However, there is no guarantee that interference will not occur in a particular installation. If this equipment does cause harmful interference to radio or television reception, which can be determined by turning the equipment off and on, the user is encouraged to try to correct the interference by one or more of the following measures:

- Reorient or relocate the receiving antenna.
  - Increase the separation between the equipment and receiver.
  - Connect the equipment into an outlet on a circuit different from that to which the receiver is connected.
  - Consult the dealer or an experienced radio/TV technician for help.
- Changes or modifications not expressly approved by the party responsible for compliance could void the user's authority to operate the equipment.

- This device complies with Part 15 of the FCC Rules. Operation is subject to the following two conditions:
- (1) This device may not cause harmful interference.
  - (2) This device must accept any interference received, including interference that may cause undesired operation.

FCC RF exposure statement

The equipment complies with FCC radiation exposure limits set forth for an uncontrolled environment. This equipment should be installed and operated with minimum distance between 20cm the radiator your body.

 **WARNING:** This product can expose you to chemicals known to the State of California to cause cancer. For more information, go to [www.P65Warnings.ca.gov](http://www.P65Warnings.ca.gov).

**Table of Contents**

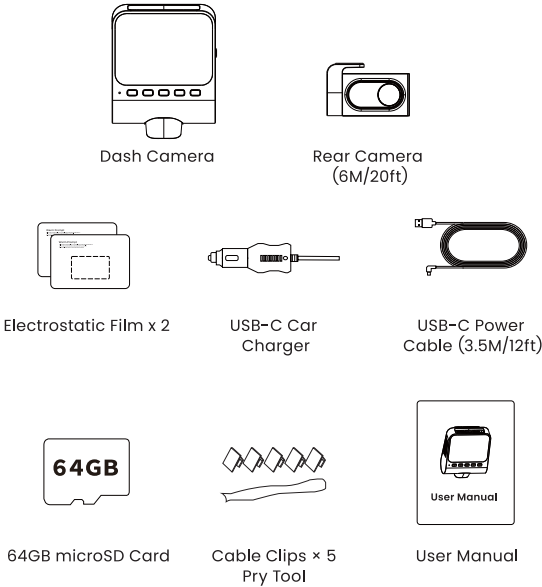
1. Packaging Contents	04
2. Technical Specifications	05
3. Product Overview	07
4. Getting Started	09
5. Installation	11
6. Playing Video Files Using Your Smartphone	14
7. Video Settings	23
8. System Settings	29
9. Playing Video Files Using Your Computer	36
10. Firmware Update	38
11. ADAS Intelligent Driving Assistance Calibration	40
12. FAQ	42

Thank you for purchasing your new GEARit 4K 2-Channel Dash Cam. This user manual will help provide you with all the information needed to get started. Please read this manual carefully before using the product and reference it for later use.

Enjoy your new product.

**Live it. Experience it. GEARit.**

1. Package Contents

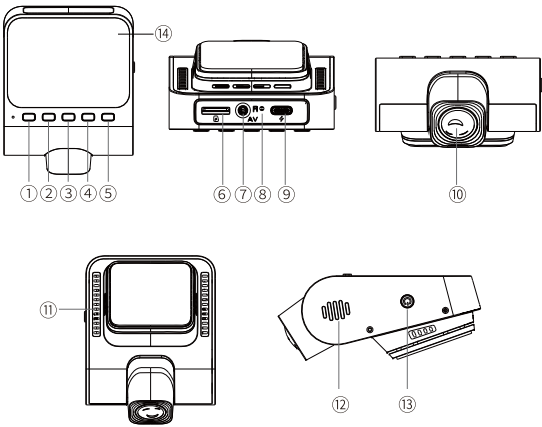


2. Technical Specifications

Model	GI-DASH-2CH-4K-BK
Aperture	F=1.8
Color	Black
Language	English / 日本語 / Deutsch / Français / Español / Italiano / Русский
Memory Card	64GB microSD Card Included. Max support 128GB, U3 Speed
Video Code	H.264 / H.265
Photo Format	JPG
Video Format	MP4
LCD Size	2.4 inch IPS Screen
Video Resolution	Front: -4K/3840x2160@30FPS(Default) -2K/2560*1440@60FPS -2K/2560x1440@30FPS -1920x1080@60FPS -1920*1080@30FPS

Video Resolution	<p>Front + Rear:</p> <p>-4K/3840*2160 25FPS+1920*1080 25FPS, support ADAS</p> <p>-2560*1440 60FPS+1920*1080 30FPS, not support ADAS</p> <p>-2560*1440 30FPS+1920*1080 30FPS+HDR, not support ADAS</p> <p>-2560*1440 30FPS+1920*1080 30FPS(Default), support ADAS</p> <p>-1920*1080 30FPS+1920*1080 30FPS, support ADAS</p>
GPS	Built-in
WiFi	Wi-Fi 6
Battery	Built-in Super Capacitor
Power Interface	5V/2.5A
Operating Temperature	-4°F to 158°F (-20°C to 70°C)

3. Product Overview



- ① Menu/Mode
- ② Up
- ③ Lock/Wi-Fi
- ④ Down
- ⑤ OK/Confirm
- ⑥ microSD Card Slot
- ⑦ Rear Camera Port (AV/IN)
- ⑧ Reset
- ⑨ Charging Port
- ⑩ Lens
- ⑪ Ventilation Hole
- ⑫ Speaker
- ⑬ Power button
- ⑭ IPS Screen

Button	Operation and Function
▲	<b>Menu Setting Interface:</b> Short press UP to select. <b>Playback mode:</b> Short press UP to select. <b>Recording mode:</b> Short press UP to turn on/off the recording function, long press to switch between front, back, and picture-in-picture modes.
▼	<b>Menu setting interface:</b> Short press DOWN to select. <b>Playback mode:</b> Short press DOWN to select. <b>Recording mode:</b> Short press DOWN to turn off/on the screen.
OK	<b>Recording mode:</b> Short press OK button to start/stop recording. <b>Setting, Playback mode:</b> Short press OK button to execute confirmation function.
M	<b>During recording:</b> Short press to enter the menu setting interface, short press again to exit the menu. <b>Playback mode:</b> Short press to select file playback, file deletion, and file lock functions. <b>Switch modes:</b> Long press to switch recording mode and playback mode.
⚠	<b>During recording:</b> Short press to lock the current video. <b>During playback:</b> Short press to return to the nine-grid thumbnail interface. <b>During recording or non-recording:</b> Long press to turn on WiFi/after successful connection, long press to turn off WiFi.
⏻	<b>Power On:</b> Short press the power button to power on (connected to an external power source). <b>Power Off:</b> Long press the power button for 3 seconds to power off. <b>Take Photo:</b> When the dash cam is recording, press the button once to capture a photo.

## 4. Getting Started

The GEARit dash cam is designed to automatically power on and begin recording once it receives power. When the ignition is turned off, it will save the current recording and shut down automatically.

### 1. Auto Power ON/OFF:

Plug car charger to cigarette lighter socket. When the car engine turns on, the dash cam will power ON and start recording automatically. When the car engine shuts off, the dash cam automatically saves the recording and powers OFF.

### 2. Manual Power ON/OFF

Manually Turn ON: While connected to external power, press the power button once.

Manually Turn OFF: Press and hold the power button for 2 seconds.



### Note:

1. A 64GB microSD card is included. Please format it in the dash cam before first use.
2. Always use the dash cam while connected to power. The built-in supercapacitor is not meant for prolonged use.

### **Note:**

1. A 64GB microSD card is included with the dash cam.  
Be sure to format your microSD card before first use.
2. When using please ALWAYS connect with power as the built-in Super Capacitor, only has 1mAh used to memorize time.
3. Setting Date & Time: Please calibrate the date/time based on your location under the TIME ZONE SETTING by going to APP system settings menu, please refer to page -33
4. Some vehicles have a 12V power outlet that remains active even when the engine is off. This can cause the dash cam to keep recording and eventually drain the car battery.

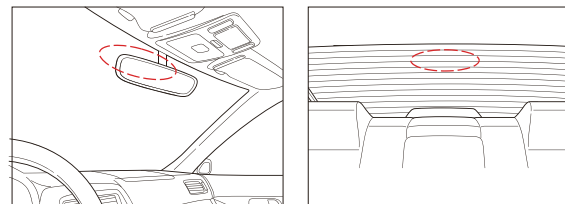
#### Solutions:

Option 1: Install a 3-Lead Hardwire Kit to the vehicle's fuse box for ignition-based power control. (Not included)

Option 2: Rewire the 12V outlet to only supply power when the ignition is in ACC or ON position.

## 5. Installation

Remove any foreign matter and clean and dry the windshield before installation. Install the front camera behind the rear view mirror. Install the rear camera at the top of the rear windshield.



#### Insert the microSD Card

Turn off the engine and insert a high-speed U3 microSD card (Class 10 or above) into the microSD slot until it clicks into place.

#### Prepare the Front and Rear Windshield

Find a location behind the rearview mirror that doesn't block your vision. Clean and dry the glass. Apply the electrostatic film to this area of the windshield — it protects from residue when removing the camera later.

#### Mount the Front Camera

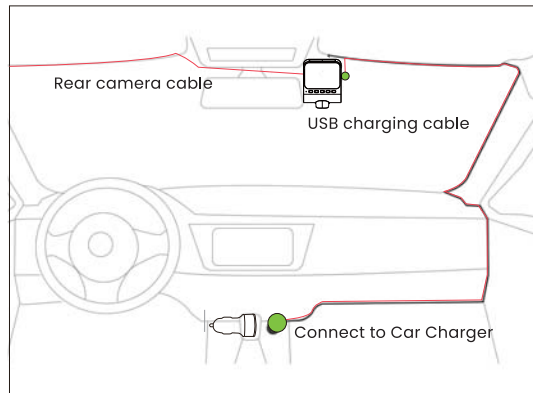
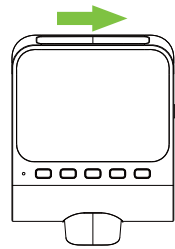
Remove the adhesive backing from the camera mount. Attach the camera onto the electrostatic film. Adjust the lens angle so it captures the road ahead clearly.

#### Mount the Rear Camera

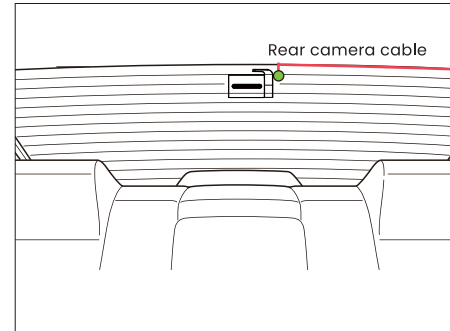
Peel the adhesive from the rear camera and attach it to the top center of your rear windshield. Rotate the camera to set the proper angle, then connect its cable to the front unit.

#### Connect the Power

Plug the provided car charger into the vehicle's 12V socket. Connect the USB-C plug to the dash cam. Use the pry tool to tuck the cable along the headliner, A-pillar, or door trim for a clean install.

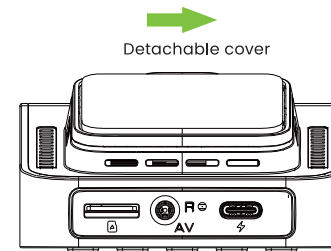


-12-



#### Start Your Engine

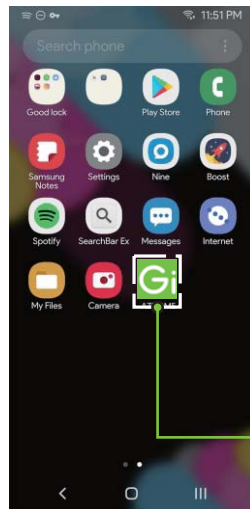
Once the car starts, the dash cam powers on and begins recording. Files are saved to the inserted microSD card. When you turn off the engine, the dash cam automatically shuts down.



-13-

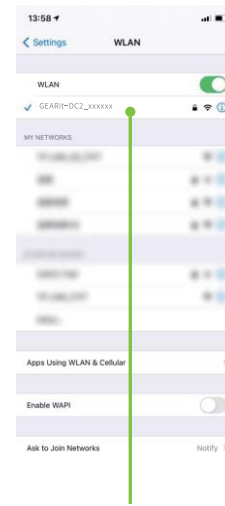
## 6. Playing Video Files Using Your Smartphone

### Review Real-Time Video Using Your Smartphone



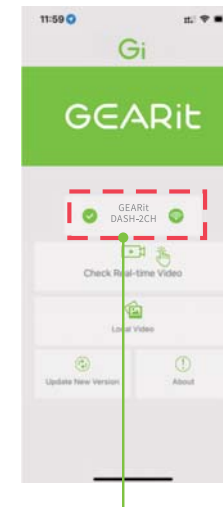
Scan QR code to download  
GEARit Cam App

Search for GEARit Cam in the  
Apple App Store or Google Play  
Store, or scan the QR Code above.



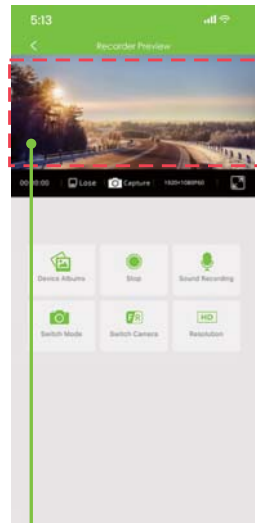
Connect to WiFi (Turn off Cellular  
Data and VPN) Please open Phone's  
Settings - WLAN Select Dash Cam  
WiFi

WiFi Name SSID: GEARit-DC2\_XXXXXX  
PASSWORD: 12345678



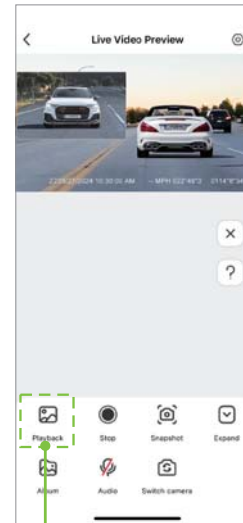
When connected  
successfully, the dash cam  
model will show here.





Now you can view the video currently being recorded in real time.

## Download The Video Files Into Your Smartphone



Tap Playback to enter file browsing mode.



Use the Timeline to locate the video you want. Tap the Download Video icon to save to your phone's gallery.



Tap to choose video file(s), then tap the download icon to save to local phone storage.



Videos saved here can be previewed, shared, or stored to the local video gallery of your smartphone.



You can view and share the downloaded video File details.

If the GEARit app only shows a default image (like a beach photo) instead of the live video, it's likely caused by your phone's cellular data interfering with WiFi.

To fix this:

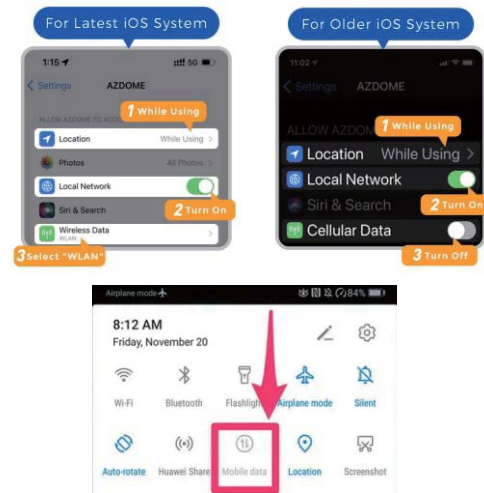
1. Disable Cellular Data for the GEARit app
2. Enable Local Network access

For the latest iOS versions:

1. Go to Settings > GEARit
2. Tap Wireless Data
3. Select WLAN Only

For older iOS versions:

1. Go to Settings > GEARit
2. Turn off Cellular Data



-20-



#### Note:

1. WiFi Direct enables your smartphone to connect directly to the dash cam within a range of approximately 10 feet (3 meters)—no internet or router required.
2. Once connected through the GEARit app, the dash cam will automatically sync the date and time using your phone's system settings.
3. The GEARit app is compatible with devices running Android 5.0 and above or iOS 9.0 and above.

#### Can I View Dash Cam Footage Remotely from Anywhere?

No. The GEARit dash cam is not a cloud-based or internet-connected device. It is not designed to stream or upload footage to the cloud, and it cannot be accessed remotely. You can only view live video and recordings while you're within 10 feet (3 meters) of the dash cam using the built-in WiFi signal and the GEARit app.

#### What is the WiFi Range?

The WiFi signal range is approximately 10 feet (3 meters) in open space without obstructions.

-21-

### First-Time App Setup Tips (Android Devices)

When installing the GEARit app, you'll see two important permission requests:

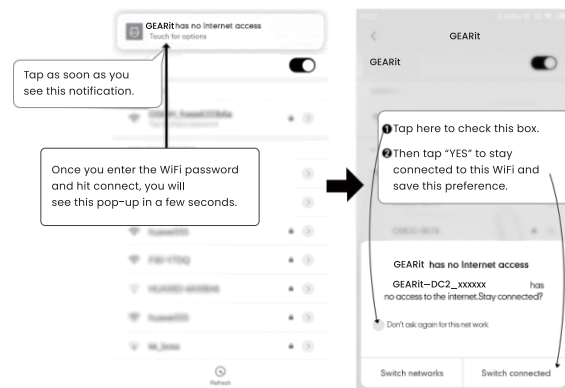
1. Location Access – Select “While using the app” to allow location access, which is required for WiFi pairing.
2. Media Access – Tap “Allow” to give the app permission to access your device's photos and media.

### WiFi Setup Notice (No Internet Warning)

The first time you connect to the dash cam's WiFi, your phone may display a “No Internet” warning — this is completely normal.

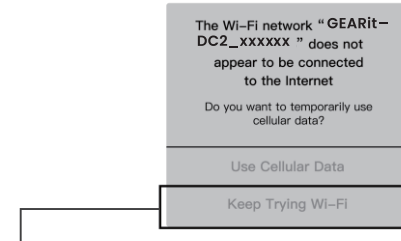
1. Wait about 10–15 seconds until a notification appears.
2. Tap the pop-up that asks if you want to stay connected to this WiFi network.
3. Confirm by selecting “Yes” or “OK.”

Once you confirm, your phone will remain connected to the dash cam's WiFi, and the app will function normally.



-22-

iPhone:



If this pop-up appears on your iPhone while using the WiFi feature, tap “Keep Trying WiFi.” If you don't, the camera will disconnect, and you'll need to forget the GEARit WiFi network and reconnect from the start.

## 7. Video Settings

### Video Resolution

Select your preferred video resolution and frame rate (FPS). Higher resolution and FPS provide smoother, clearer footage—but will use more storage space.

Front:

- 3840\*2160 30FPS (default)
- 2560\*1440 60FPS
- 2560\*1440 30FPS
- 1920\*1080 60FPS
- 1920\*1080 30FPS

-23-

Front + Rear

3840\*2160 25FPS+1920\*1080 25FPS, supports ADAS

2560\*1440 60FPS+1920\*1080 30FPS, do not support ADAS

2560\*1440 30FPS+1920\*1080 30FPS+HDR, do not support ADAS

2560\*1440 30FPS+1920\*1080 30FPS (default), supports ADAS

1920\*1080 30FPS+1920\*1080 30FPS, supports ADAS

#### **Loop Recording — Off/ 1min (Default)/ 2min / 3min**

Set the length of each loop recording segment (1, 2, or 3 minutes).

When enabled, the dash cam continuously records by automatically overwriting the oldest files once the memory card is full.

If set to Off, the camera will record in segments up to 5 minutes and stop when the card is full.

#### **WDR — On(Default)/ Off**

Wide Dynamic Range improves image quality in high-contrast lighting by balancing highlights and shadows.

This helps capture clearer details in both bright and dark areas of the frame.

#### **Time Lapse record — Off(Default)/ 4-img/second /2-img/second /1-img/second /1-img/2-sec**

Time Lapse mode captures fewer frames per second, creating high-speed video playback while saving storage space.

For example: 1 image/second = 30 minutes of real time compressed into a 1-minute video.

#### **Exposure — -2.0 to +2.0 (Default: 0.0 Auto)**

Adjust the exposure setting to make your video brighter or darker, depending on lighting conditions or personal preference.

#### **Record Audio — On (Default) / Off**

On: Audio is recorded with video.

Off: Video is recorded without sound.

#### **Stamp — On (Default) / Off**

Toggle display of Date, Time, Speed, GPS coordinates, and GEARit logo on recorded videos.

#### **Parking Mode G-Sensor — 0 (Off) to 9 (High Sensitivity)**

Adjust sensitivity for impact detection while parked.

0 (Off): No impact detection

1 (Low): Triggers recording for light taps

5 (Medium) [Default]: Balanced setting for typical use

9 (High): Only records strong impacts, reducing false triggers

#### **Video Recording G-Sensor — 0 (Off) to 9 (High Sensitivity)**

Controls impact detection while driving.

0 (Off): No impact-triggered recording

1 (Low): Records minor bumps

5 (Medium) [Default]: Best for regular driving conditions

9 (High): Captures only major incidents, avoiding false recordings

#### **Adjusting the G-Sensor Sensitivity**

You can customize the G-sensor sensitivity to ensure only important incidents are recorded—while ignoring small bumps or vibrations.

The default setting provides a good balance for most situations.

To disable all impact-based recordings (while parked or driving), set the sensitivity to Off.

**The G-sensor detects motion along three axes:**

Vertical (up/down)

Lateral (side-to-side)

Longitudinal (front/back)

When significant movement or impact is detected—like during a collision—the dash cam automatically begins recording and saves the footage.

**Parking Mode — On / Off (Default)**

This mode activates when the dash cam detects motion or impact while your vehicle is parked.

If the G-sensor senses a jolt or vibration, the camera powers on and records a 1-minute video.

This video is saved and locked, preventing it from being erased by Loop Recording. The camera then shuts off again automatically.

On your next drive, you'll hear:

"Parking mode was activated while you were away."

This means footage was captured while you were gone—check the Event folder to view it.

**24HR Auto Parking Mode Options**

Off (Default) / Time-Lapse 1fps + G-Sensor / Motion Detection + G-Sensor / Auto Turn Off + G-Sensor

These modes offer different recording behaviors while parked:

Time-Lapse + G-Sensor: Records at 1 frame per second, switches to full recording after an impact.

Motion Detection + G-Sensor: Records only when motion is detected or impact occurs.

Auto Turn Off + G-Sensor: Camera stays off until a strong impact wakes it.

**Important Note**

These features require a 3-lead Hardwire Kit (not included). If using a car charger, a pop-up will appear saying: "This feature will NOT work unless you install the recommended 3-lead hardwire kit."

**Hardwire Kit Connection Prompt**

If prompted with "Kit connected?", select "YES."

If the kit isn't detected, a message will appear:

"Hardwire kit NOT detected. Please connect the 3-lead hardwire kit."

Tap "YES" again to return to the menu.

The 24HR Auto Parking Mode requires the 3-lead Hardwire Kit (sold separately) for proper operation.

**Time-Lapse 1fps + G-Sensor**

With this mode ON and the hardwire kit installed: Turning off the engine switches the dash cam to 1fps time-lapse mode.

If impact is detected, it records a 1-minute full video, saves it, and resumes time-lapse.

**Motion Detection + G-Sensor**

When active with the hardwire kit: The camera goes into motion detection mode with the screen off.

It records when movement is detected.

If an impact occurs, it saves a 1-minute clip to the events folder and returns to standby.

Voice alert: "Parking mode was activated while you were away."

When you start your vehicle again, the camera exits either mode and resumes normal recording.

**Auto Turn Off + G-Sensor**

When the engine is off, the dash cam enters impact-only mode and powers down.

It powers on if an impact is detected and records a 1-minute video.

**Hide Status Icons — Off (Default) / 1 min / 3 min / 5 min**

Temporarily hides on-screen icons to provide a cleaner full-screen display:

- Off: Icons always visible
- 1, 3, 5 min: Icons disappear after selected idle time

**Speed Unit — KMH / MPH (Default)**

Select your preferred unit for displaying vehicle speed.

**Live Speed — On (Default) / Off**

Enable or disable the live speed overlay on the LCD screen during driving.

**Rotate Front Video — On / Off (Default)**

- Off: Front camera records in the standard orientation.
- On: Inverts the video if the camera is installed upside down or in a non-standard position.

**Rotate Rear Video — On / Off (Default)**

- Off: Rear camera records in standard upright orientation.
- On: Flips the rear camera video vertically, useful for custom mounting angles.

**Mirror Rear Video — On (Default) / Off**

- On: Horizontally mirrors the rear camera view to simulate a rear view mirror.
- Off: Displays the actual rear view without mirroring.

## 8. System Settings

**ADAS Intelligent Driving Assistance — Off (Default) / CA / FCW / SNG / LDWS**

ADAS (Advanced Driver Assistance Systems) enhances driving safety by providing real-time alerts using computer vision and AI.

Features include:

- LDWS: Lane Departure Warning
- FCW: Forward Collision Warning
- SNG: Front Vehicle Start-up Alert
- CA: Pedestrian Collision Warning (only works within the front camera's 90° field of view)

✦ Refer to page 40 for ADAS calibration steps.

**Voice Control — On (Default) / Off**

English voice commands supported:

- Turn on/off WiFi
- Take picture
- Lock the video
- Turn on/off audio
- Turn on/off screen
- Show front/rear camera

**WiFi — On / Off (Default)**

When enabled, the screen displays the dash cam WiFi name:

GEARit\_DC2\_\*\* | Password: 12345678\*\*

- Keep your phone within 10 ft (3 meters) for a stable connection.
- Use the GEARit app to preview live video and access settings.

✦ While in WiFi mode, dashcam buttons are disabled. To exit, press and hold the center (emergency) button.

#### **Date / Time Setup**

Press the [M] button to cycle between fields. Use [UP] and [DOWN] to set the correct time, then press [OK] to confirm.

#### **Clock Format — 24 Hours / 12 Hours (Default)**

Choose your preferred time display format:

- 24 Hours: Displays time from 00:00 to 23:59 (commonly used globally and in military time).
- 12 Hours: Displays time with AM/PM, from 12:00 AM to 11:59 PM.

#### **Date Format — yyyy/mm/dd, mm/dd/yyyy (Default), dd/mm/yyyy**

Select the date format that matches your regional or personal preference.

#### **Screen Saver Settings**

- Live Video Always On (Default): The screen continuously displays the live recording view.
- Screen Saver ON After 1 Minute: After 1 minute of no operation, the screen shows only time and live speed.
- LCD OFF After 1 Minute: The screen turns off after 1 minute of inactivity, but recording continues in the background.

#### **Speaker Volume — Low / Medium (Default) / High**

Adjusts the loudness of audio playback from recorded videos.

#### **Beep Sound — On (Default) / Off**

Toggle the key tone that plays when buttons are pressed.

#### **Voice Guidance — On (Default) / Off**

- On: Enables spoken alerts and status updates from the dash cam.
- Off: Mutes all voice notifications for a quieter experience.

#### **Boot Up Tone — On (Default) / Off**

- On: A tone sounds when the dash cam powers on.
- Off: Disables startup sound for silent operation.



#### Language — English (Default) / Others

Choose your preferred system language. Available options include: English, French, Spanish, Portuguese, German, Italian, Simplified Chinese, Traditional Chinese, Japanese, Russian, and more.

#### License Plate Setup

Set your license plate number for watermarking.

- Use Up/Down to select characters
- Press [M] to confirm each character
- Press [OK] to save

#### GPS Info

View real-time GPS data, including:

- Satellite count
- Speed
- Direction
- Time
- Longitude / Latitude

#### GPS Format — Decimal Degrees / Degrees, Minutes, Seconds (Default)

Select your preferred format for GPS coordinate display.

#### Frequency — 50Hz / 60Hz (Default)

Set the video frequency to match your local electrical standard to reduce flickering:

- 50Hz — UK, Europe, Africa, Asia, Australia
- 60Hz — North America, most of South America, parts of Japan

#### GPS Time Zone Setting — UTC/GMT+1 to UTC/GMT+12 & UTC/GMT-1 to UTC/GMT-12 / Default: GMT-7

Use the time zone setting to make sure your dash cam's timestamps match your local time.

- Available Range: From UTC/GMT-12 to UTC/GMT+12
- Default Setting: GMT-7

#### To Set Your Time Zone:

1. Go to the Time Zone option in GPS or time settings.
2. Select your region's UTC offset.
3. Press OK to confirm.

⚠ Time zone does not auto-update for daylight savings. Adjust manually as needed.

Setting the correct time zone ensures your dash cam's recordings reflect the actual time of events—crucial for accurate records.

#### Storage Space — Total / Free / Event / Normal / Photo

You can check memory card usage under this setting.

For best performance, format the memory card regularly to keep enough free space available.

**Format — Cancel / Format**

Use this option to format the inserted memory card.

⚠️ All data will be erased.

We recommend formatting the card in the dash cam before first use.

**Default Setting — Cancel / OK**

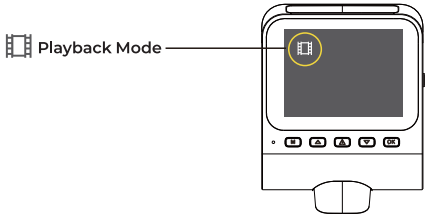
Restores all dash cam settings to their original factory defaults.

**Firmware Version**

Displays the currently installed firmware version.

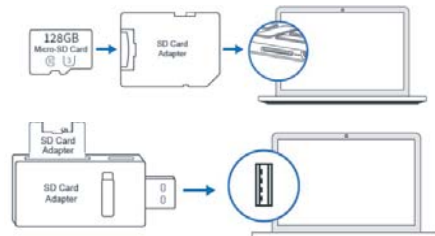
Check this before updating to ensure you're using the latest version.

For firmware updates, visit: [www.GEARit.com](http://www.GEARit.com)

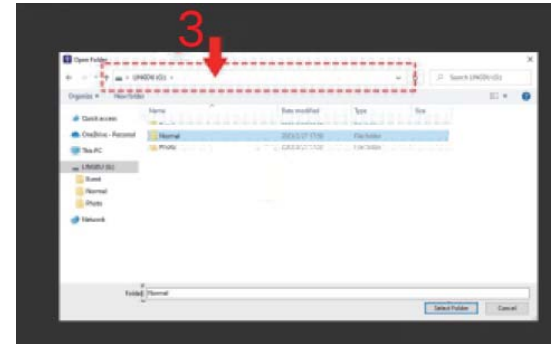


Delete	Delete Current (Default) / Delete All
Protect	Lock Current (Default) / Unlock Current / Lock All / Unlock All
Slide Show	2 Seconds (Default) / 5 Seconds / 8 Seconds

## 9. Playing Video Files Using Your Computer

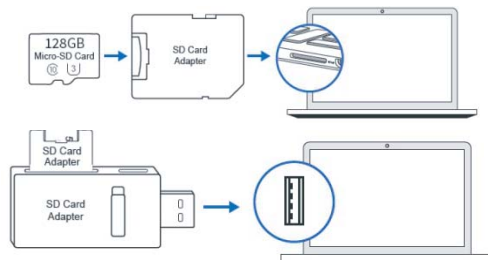


1. Remove the microSD card from your dash cam.
2. Insert it into a microSD card reader (not included) and connect to your computer.
3. Select 'My Computer', locate the memory card disk, and choose the video file you want to play.

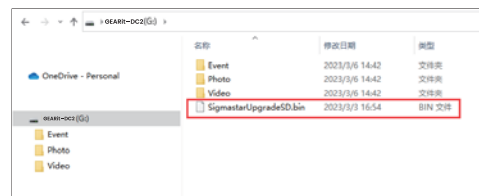


## 10. Firmware Update

1. First, format your microSD card using your dash cam. The formatting process may take about 10-30 seconds.
2. Remove the microSD card from the dash cam.
3. Insert the card into a microSD card reader and connect it to your computer.



4. Download the latest GEARit firmware from [www.GEARit.com](http://www.GEARit.com) > Support > Downloads to your computer.
5. Unzip the downloaded firmware (zip file) and copy the firmware file "SigmastarUpgradeSD.bin" to the root directory of the microSD card.



6. Connect the camera to the car charger to begin the firmware update process. You will see the upgrade progress bar, and the red light will turn solid, indicating that your GEARit dash camera is updating the firmware.

Note: The firmware update may take up to 1 minute, so please be patient. Ensure the power stays connected throughout the update. Once the firmware is updated, the camera will automatically turn on. Afterward, format your microSD card again using your dash cam.

7. To check the latest firmware version, go to the menu > Firmware Version.

## 11. ADAS Intelligent Driving Assistance Calibration

The ADAS features include Lane Departure Warning, Forward Collision Warning, Front Vehicle Start-up Warning, and Pedestrian Collision Warning.



### ADAS Calibration Procedure:

1. Install the device following the "Installation Guide" in the manual. It is recommended to install it in the suggested location.
2. Adjust the dash cam angle.
3. Press the function key twice in quick succession to activate ADAS.
4. When the calibration conditions are met, the dash cam will provide a voice prompt: "Calibration of driving assistance begins."
5. Once the calibration is successful, the dash cam will give a voice prompt: "Driving assistance calibration successful."

### Calibration Start Conditions

Both of the following conditions must be met:

1. Road conditions: Clear road lines on both sides of the vehicle ahead, with partial recognition of the vehicle's front.
2. Vehicle speed: A dashboard speed of 20 MPH (35 kmh) or above.  
Note: If both road conditions and speed are not met simultaneously, the dash cam will not provide a voice prompt to start calibration.

### Calibration Success Conditions

1. When road conditions and vehicle speed are met simultaneously and maintained for 5 minutes, the dash cam will prompt: "Calibration successful."
2. If there is traffic congestion or poor road conditions, the calibration time may be extended.

### Calibration Failure Conditions

If road conditions and vehicle speed are not met simultaneously and the calibration time exceeds 30 minutes, the dash cam will provide a voice prompt: "Driving assistance calibration failed, please recalibrate according to the requirements."

### Calibration Failure Procedure

Recalibrate following the "Calibration Start Conditions" or adjust the installation position and angle of the dash cam before attempting to recalibrate.

Note: Generally, the accuracy of ADAS functions can exceed 90%, but it may be affected by various factors such as weather, road conditions, and the surrounding environment. Always remain vigilant and pay close attention to road conditions when using ADAS functions to ensure driving safety.

Important: The pedestrian collision warning function only applies to the 90° field of view of the front camera.

## 12. FAQ

### Q: Camera Does Not Turn ON?

1. Try Different Power Sources:
  - Use a different USB cable and your smartphone's USB charger.
  - Plug it into a 110V wall outlet at your home.
2. Check the Camera's Response:
  - Once plugged in, the camera should automatically turn on. If it doesn't, press the Power button once to see if that turns it on.
  - there is still no response, try removing the memory card from the camera.
3. Use the Reset Function:
  - With the camera still plugged in, use a pen tip or paperclip to press the RESET button (located at the top) once.
  - The camera should now turn on. If it does not, please CONTACT US for further assistance.

### Q: Camera Displays "Memory Error" or "Please Insert Micro SD Card"?

1. Confirm Micro SD Card Specifications:
  - Ensure that the Micro SD card is at least Class 10, U3.
2. Reinstall the Micro SD Card:
  - Power off the camera and carefully remove the Micro SD card.
  - Check the card for any physical damage or dirt.
  - Reinsert the card firmly into the slot, ensuring it is properly seated.
3. Format the Micro SD Card:
  - If the card is not recognized, format the card in the camera (if possible) or use a computer.
  - Remember to back up any important data before formatting, as this will erase all content on the card.
4. Firmware Check:
  - Ensure your camera has the latest firmware, as this can sometimes resolve compatibility issues with memory cards.

### Q: Video is Fuzzy?

- Clean the Lens: Make sure the camera's lens and windshield are free of dirt, grease, or smudges.
- Check for Defects: If the lens still appears out of focus after cleaning, it could be a manufacturing defect. Please contact support with a screenshot or sample video for assistance.

### Q: Why Does the Dash Cam Get HOT?

- Normal Operation: It's normal for the camera to feel warm to the touch. The operating temperature range is -4°F to 158°F (-20°C to +70°C). If the camera feels excessively hot, stop using it and contact support.

### Q: Why Does the Dash Cam Turn On/Off Automatically?

- Reset and Update Firmware: Try resetting the dash cam and updating the firmware. If the issue persists, please reach out to customer support for further assistance.
- If these steps don't resolve the issue, the problem could lie with the microSD card or the camera's card reader. Try using a different microSD card or contact customer support for additional help.

**Q: Date/Time Always Changes?**

- Adjust Time Zone: Go to the camera's system settings and select the correct time zone. The date and time will automatically update once a GPS signal is acquired.

**Q: Oldest Video Files Missing?**

- Loop Recording Feature: Your GEARit Dash Cam uses Loop Recording. When set to 1, 2, or 3-minute intervals, the camera will automatically overwrite the oldest video files once the memory card is full. This allows continuous recording without the need for manual deletion.

**Q: Why is Video Playback Lagging on PC?**

- High Bitrate Files: Laggy playback may be due to high-bitrate video files that your PC can't process smoothly. To improve playback performance, try recording at a lower resolution to reduce file size and bitrate.

**GEARit LIMITED WARRANTY**

**Warranty Coverage:**

We stand behind our products with confidence, offering warranties designed to give you peace of mind and a worry-free experience. Our commitment covers most GEARit products with specific warranty periods based on product type such as cables, cases, wall chargers, and more. Either way, you're protected from defects in materials and workmanship.

• **Consumer Products:** 24 Months

**30-Day Money-Back Guarantee:**

You may return undamaged products within 30 days for a full refund. Products must include all accessories and original packaging. Shipping costs for non-quality-related returns are the responsibility of the buyer.

**Replacement Warranty:**

If a defect arises within the warranty period, GEARit will repair, replace, or issue a credit for the product. Repaired or replacement products are covered for 90 days or the remainder of the original warranty, whichever is longer.

**Need Assistance?**

For more information or to file a warranty claim, please visit GEARit's Warranty Support.

(<https://www.gearit.com/pages/warranty-information>)

(866) 686-1800

[support@gearit.com](mailto:support@gearit.com)

Mon - Fri: 9:00 AM - 5:30 PM (PST)

[www.gearit.com](http://www.gearit.com)