

# FX2510 Product Instructions

## Table of contents

. front page	-----
. Product Overview	-----
. Product electrical specifications	-----
. Package Contents	-----
. System Requirements	-----
. Installation Guide	-----
. Basic operating instructions	-----
. Functional Details	-----

## 1.Home

Product Name: Wireless Mobile Private Cloud Disk

Product Model:FX2510

Manufacturer information: Shenzhen Fanxiang Information Technology Co., Ltd.

## 2.Product Overview

Product function introduction:

Brahmal want the wireless hard disk enclosure to be compatible2.5EnglishSATAThe SSD and mechanical hard disk of the interface can support7mm Thickness of mechanical hardness Plate and20TBSolid-state hard disk withinExpanded LoadingSDCardUSBA 3.0Interface, externalSDCardUDisk to store data.WifiFunction, can beAPPView stored data remotely on your mobile phone.

## Features:

The exterior is made of aluminum alloy, and the interior is inlaid with aluminum alloy heat sink and heat dissipation silicone to achieve multiple cooling effects. It is compact and portable.

Applicable scenarios:

## (1) hardware

1) Interface Type: Type C The port is used for data transmission and charging. SATA The interface is used to connect the hard disk and expand the SD and USB 3.0 Interface, external SDCard UDisk transfer data;

Scene example: The photographer shoots materials outside SDCard, but SD The card capacity is limited. SDCard access FX2510 The data can be automatically identified and the material can be transferred to FX2510 In the future, you can quickly share it with customers for online viewing;

2) Structural compatibility: SATA Interface 2.5 Both mechanical hard disks and solid-state hard disks are compatible and can be plug-and-play;

Example: A user has several old hard disks at home that have stored a large amount of data. FX2510 It can directly identify the data in the hard disk and retain the original partition of the hard disk without formatting. (Currently, competitors on the market, such as UGREEN, Hikvision, and Extreme Space, require that the old hard disk be formatted before it can be used after being connected to their devices, forcing users to transfer the data of the disk first and then re-transmit it. NAS middle)

3) Network connection method: Built-in Gigabit network port and Wifi Function, free switching between wired and wireless networking;

4) Large capacity expansion: hard disk box comes with 32GB Capacity, external Y height 20TB (tentative, specific details depend on actual measurement) TB Mechanical hard disk or solid state drive;

5) Appearance and size: small in size, easy to carry.

## (2) software

1) Data transmission method: Wired connection PSSD Data can be transmitted in wireless mode or in cloud storage mode for remote transmission;

Example scenario: Data from home and office, through FX2510 Access online at any time, no need to carry it with you UDisk and other storage disks.

2) Automatic backup and online viewing: Automatically scan and back up photos and videos on the mobile phone to free up mobile phone memory. APP, view online on mobile phone

Scenario example: Mobile phone pictures and videos take up a lot of memory. You can turn on the automatic backup function to automatically scan and back up the local photos and videos on the phone. Subsequently, new pictures and videos taken by the phone can also be automatically backed up.

3) Shared documents: Small teams can FX2510 CCC Shared Files

Scenario example: A small team has an increasing number of office files, and all team files of all members can be stored in FX2510, other members can view and download online.

4) Network storage data exchange: data can be transferred between Baidu Cloud Disk

Example scenario:FX2510Support Baidu Cloud Disk function.APPLog in to your Baidu Cloud account and transfer the original data in Baidu Cloud toFX2510You can also storeFX2510The data in the file is transferred to Baidu Cloud for storage and can be directly transferred between them.

### 3.Product electrical specifications

No.	Parameter	Requirement
1	model	FX2510
2	Flash	8GB eMMC
4	buzzer	YES
5	BLE	YES
6	Wi-Fi	Wi-Fi 6
7	Power supply port	TYPE-C *1:5V/3A
8	Compatible Hard Drives	2.5in SSD or 2.5in HDD
9	Storage temperature range	- 25—85℃
10	Operating temperature range	0—40℃
11	Working power consumption	<15W
12	Standby power consumption	<7W
13	No-load power consumption	<7W
14	Power consumption when shutdown	<1W
15	USB3.0&USB2.0 Current supported by the interface	5V/1A
16	Interface Type	LED*3/RJ45 1Gbps*1/USB3.0 TypeA*1/TYPE-C*2/reset*1/Power*1/SD3.0*1/SATA*1;

## 4.Package Contents

Product List: Wireless Hard Drive Enclosure\*1

Accessories description: Power adapter\*1, power cord\*1, data line\*1, Network cable\*1,manual\*1, warranty card\*1

## 5.System requirements

### 5.1Hardware requirements for the system:

compatible iOS,Android,macOS,Windows,Linux system.

### 5.2Software system requirements:

system	Version requirements
iOS	12.0and above
Android	8.0and above
macOS	10.15and above
Windows	7.0and above
Android TV	8.0and above

(The software has not been officially released yet.iOSandAndroidVersion available for user experience testing)

## 6.Installation Guide

### 6.1Preparation before installation:

Power cord and stable power supply environment;2.5InterfaceSATASolid-state drive or mechanical hard drive; network environment that can connect to the external network.

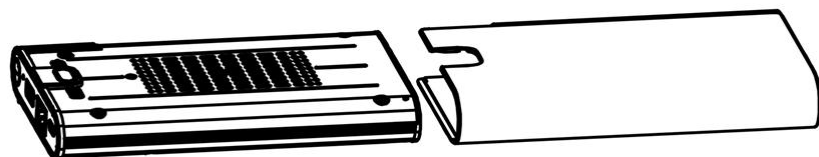
### 6.2Installation steps:

1.1. Install the hard disk: Press the knob on the back downwards, push and pull to open the housing, push open the anti-collision strip, and insert the SATAHard drive, close the anti-collision strip, and close the outer shell.

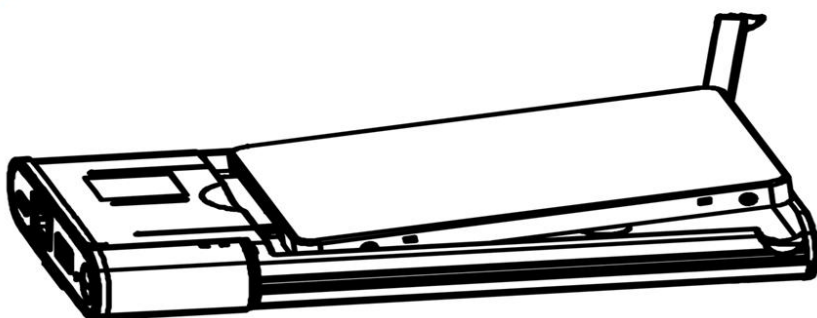
1



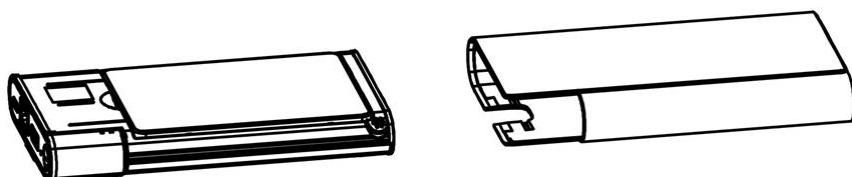
2



3



4



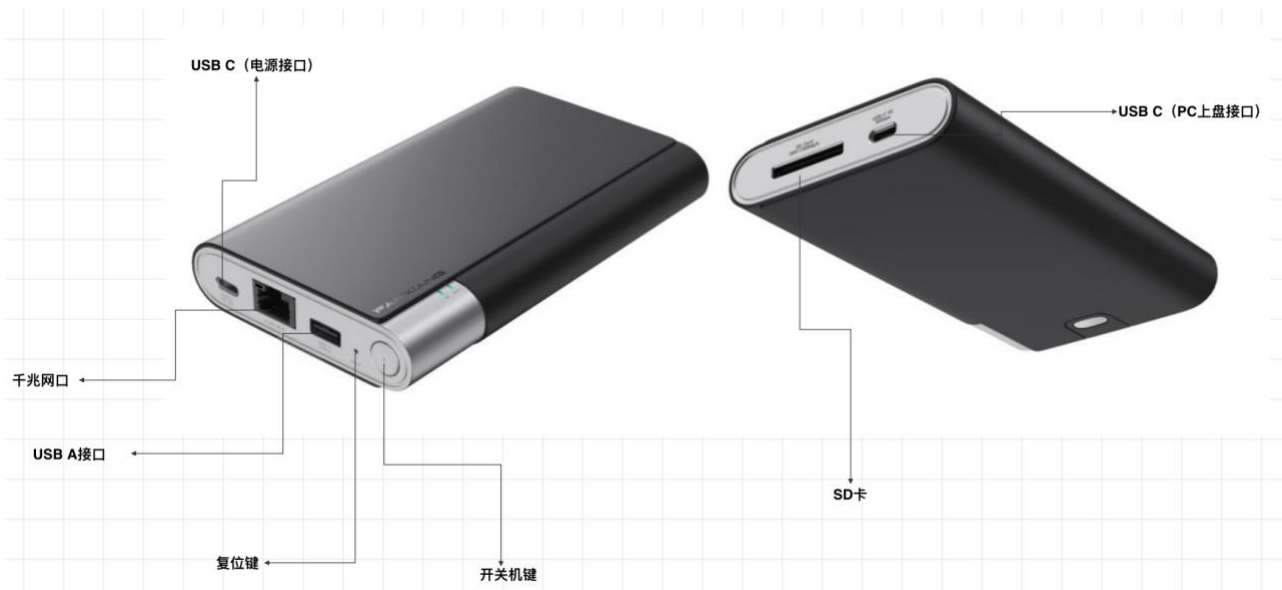
2, Connect the power supply: Connect the power cord toFX2510Device and plug into a power outlet to complete the hardware installation.

3, Connect to the network:FX2510Connect the device to the network.

4, turn onNASDevice: The device automatically turns on after power is applied.

Note: The RF function is automatically turned off when the hard disk is recognized for cable transfer with the computer.

## 7.Basic operating instructions



### 7.1Key operation instructions

BrahmaFX2510The device has a power button and a reset button.

Serial number	Function	Instructions
1	Power on	In the off state, short press the power button to turn on the device.
2	Shutdown	When the device is powered on, press and hold the power button for more than 3sAfter shutdown
3	Network configuration mode	In the power-on state, quickly and continuously press 3 times the power button once, the buzzer sounds once, and the Wi-FiNetwork configuration mode
4	Reset button	After powering on, press and hold the reset button for more than 3sAfter that, the red and green indicators flash alternately, and the device is restored to factory settings.

### 7.2Device Interface Description

Type CThe port is used for data transmission and power supply.

SATAInterface for connection 2.5Mechanical hard disk and solid state drive.

EquippedSDCardUSB-A 3.0Interface, externalSDCardUDisk transfer data.

### 7.3Device indicator status description



Indicator light name	state	illustrate
System indicator	Solid blue	Mobile hard disk mode
	Solid red	Hard disk is missing or not recognized (empty disk state)
	Flashing red	Insufficient power supply to the hard disk
	The red and green indicator lights flash alternately	Restore factory settings
	The red and green indicator lights flash slowly alternately	Firmware Upgrading
	Solid green	Hard disk identification is normal
	Flashing green	Hard disk has task transfer
	Flashes green quickly to off	During device shutdown
	Green Breathing	The device enters sleep mode

Network indicator light	Always on	The network is connected normally, and the device is connected to the external Web Server
	Slow Flash	Network configuration status
	Off	Not connected to the network (no device PreparedIP)
	breathe	Get the deviceIP, no connection outside Web Server
Power indicator	Always on	Power on status
	Off	Shutdown status

## 7.4 Binding Device

### 1, Install Fanxiang CloudApp

The binding device needs to be App Medium Operation

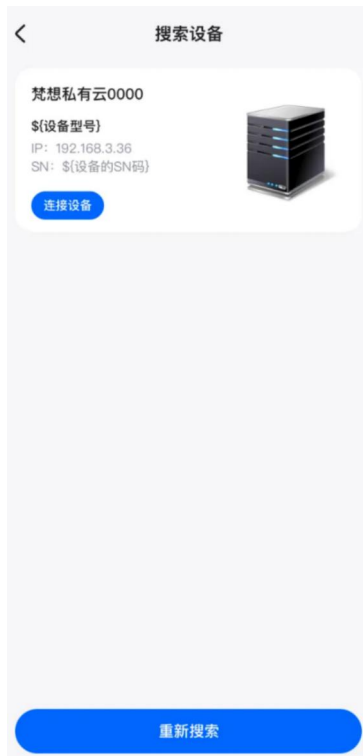
### 2, Open App, Register a cloud account

After the first registration and login, if it is detected that no device is bound, it will automatically jump to the device binding interface.



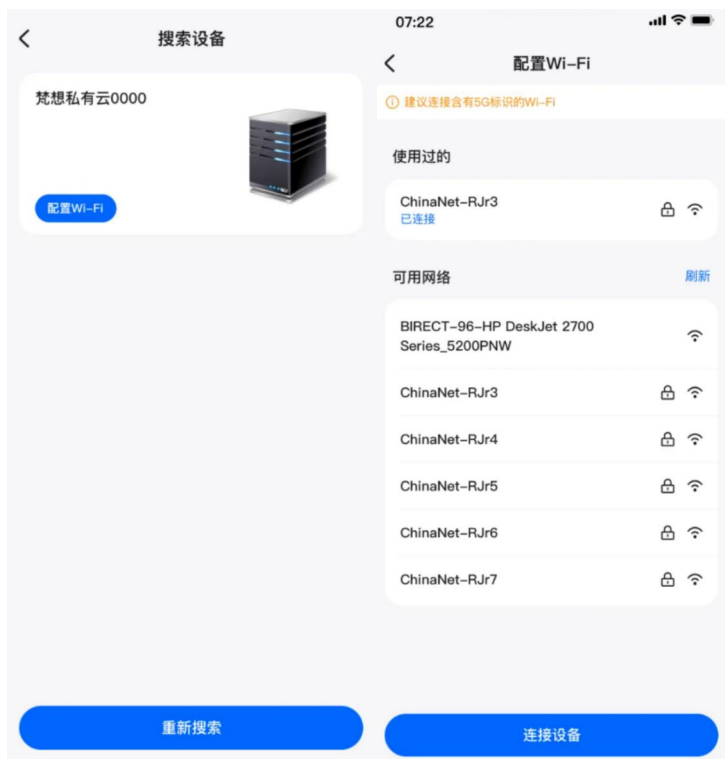
### 3, connect via Ethernet

The phone and the device are connected to the same network, a LAN connection is established, and the device is searched through the LAN. Click Connect Device to bind.



### 4, pass Wi-Fi Make a connection

existAppAfter the network configuration is successful, click Connect Device to bind.



5.After the device is successfully bound, enterAppHome page.

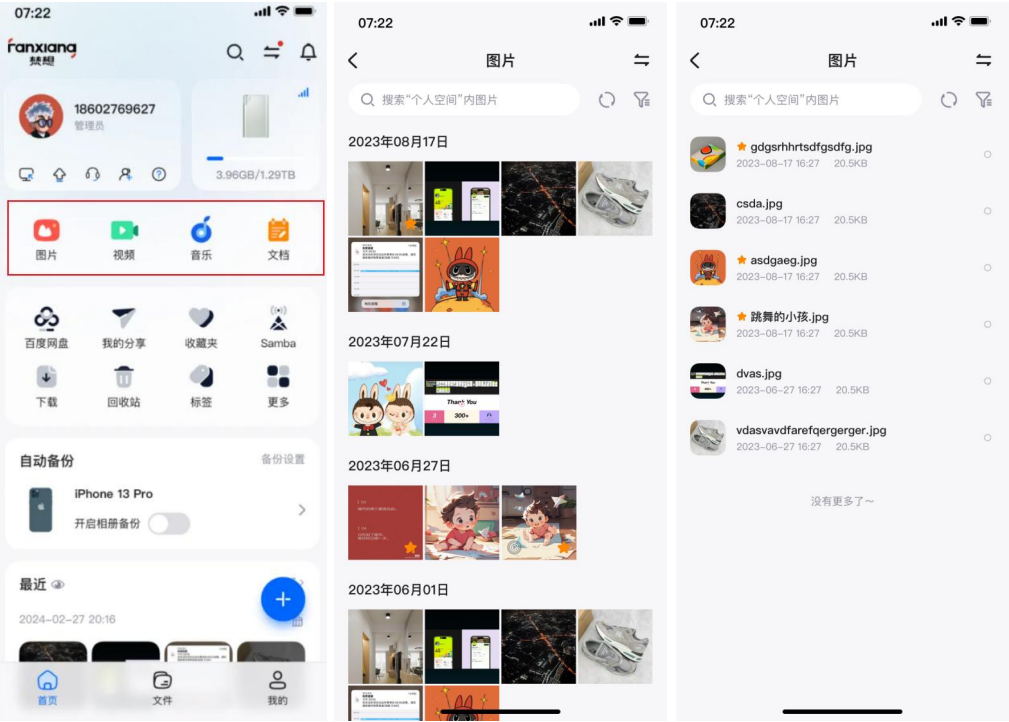


## 8.Functional Details

### 8.1Home

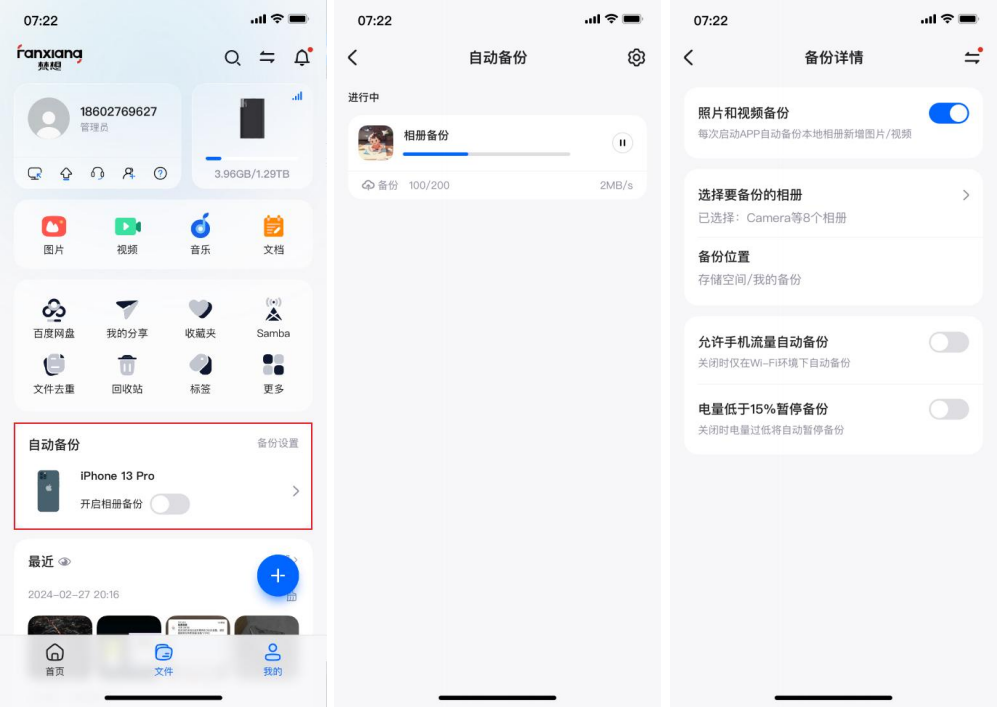
#### 1, File Classification

Files uploaded by users to the device will be automatically categorized and can be quickly accessed through pictures, videos, music, and documents on the home page. The following figure takes picture categorization as an example.



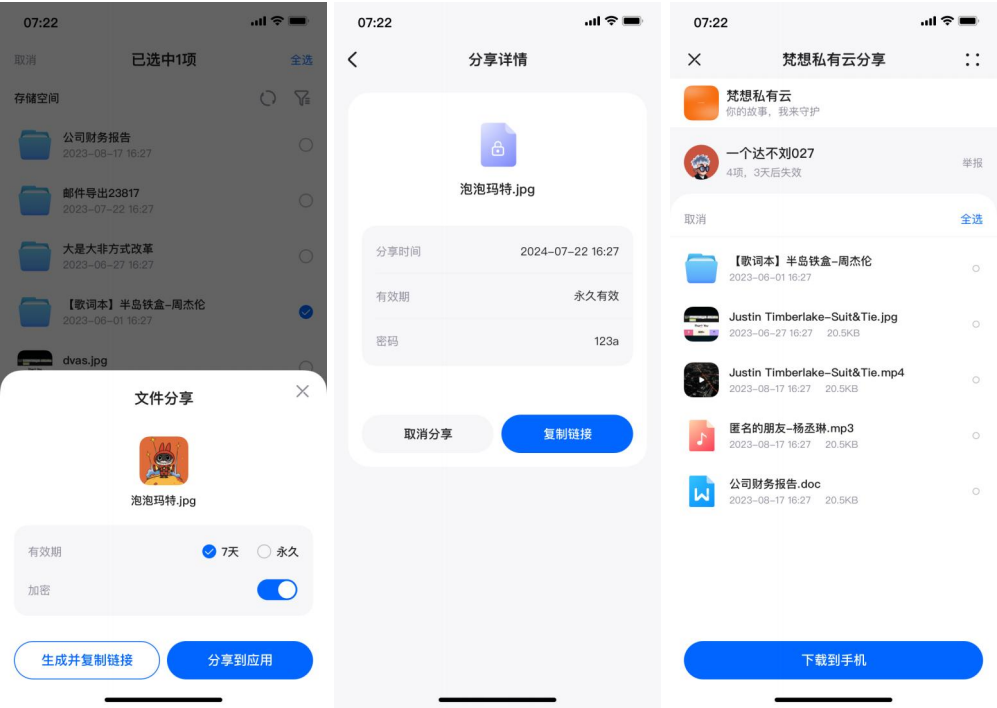
2, Automatic backup

The pictures and videos in the user's mobile phone can be automatically uploaded to the device through this function.



3、My sharing

Users can share files with others via links, and open the links in a browser to view and download the shared content.



4、Task Management

User inAPPTThe file transfer tasks in progress can be viewed in Task Management.



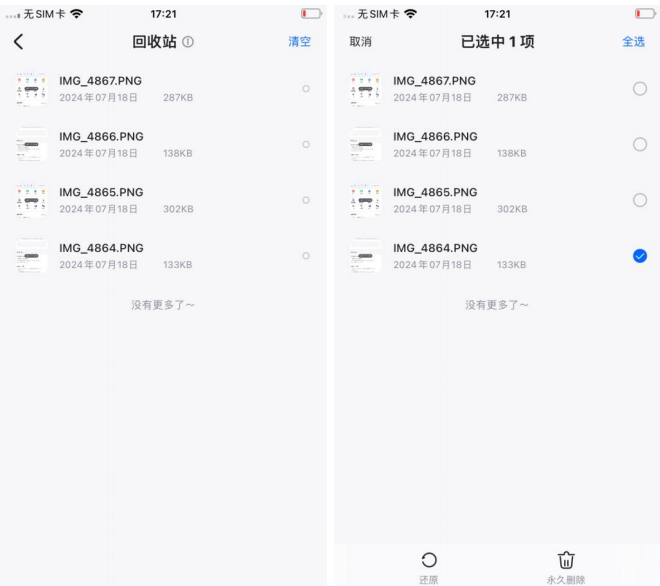
## 5, SAMBA

SAMBAThe service allows all cameras, computers, TVs, mobile phones or other electronic products in the home that support this function to access the data in the Fanxiang Cloud device.



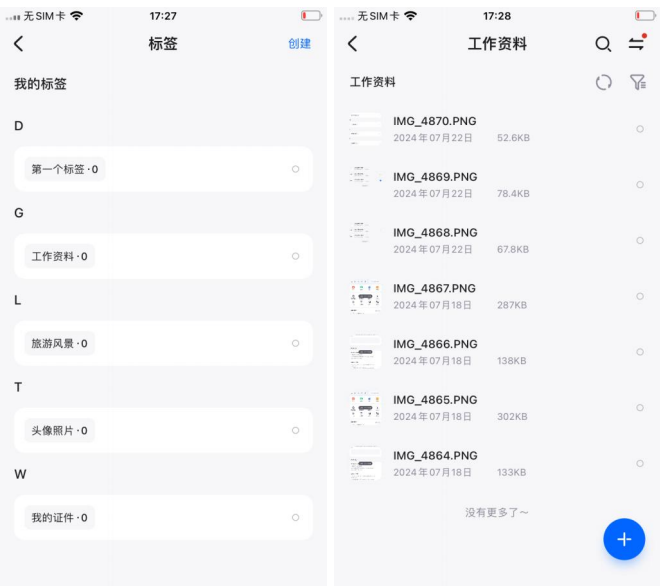
## 6, Recycle Bin

User throughAPPDeleted files will be moved to the Recycle Bin and retained.15days, during which time files can be restored.



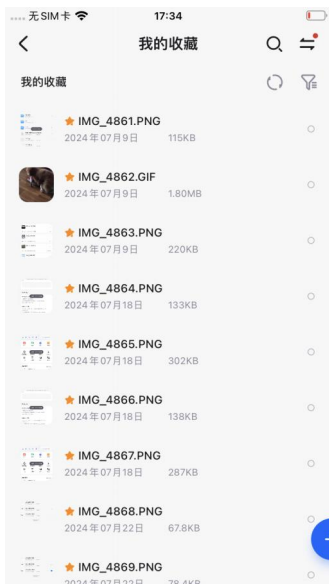
## 7,Label

Users can add tags to files to facilitate tracking and management of files.



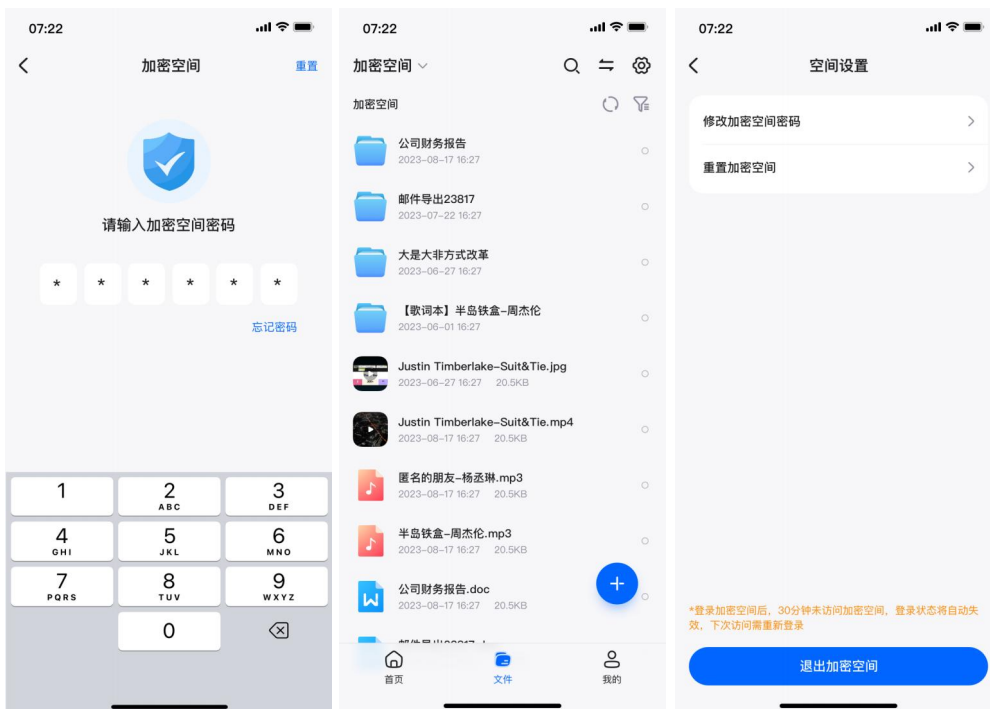
## 8, Favorites

Users can add frequently used files to favorites for quick access later.



## 9, Encrypted Space

Users can move important files into the encrypted space, and subsequent access to files in the encrypted space requires password verification.



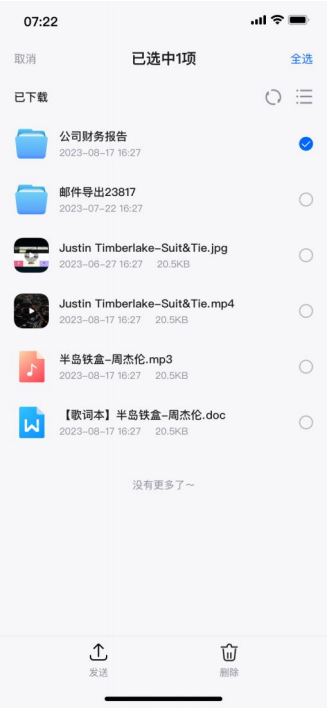
## 10, Message Notification

System-related messages will be notified to users through the message center.



11, downloaded

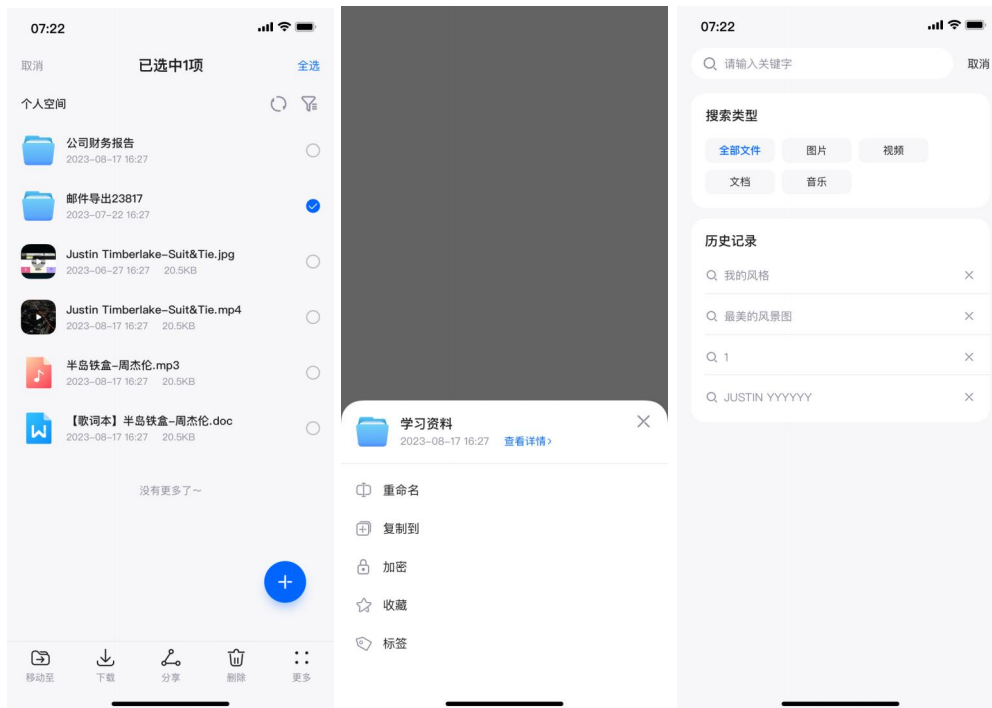
Files downloaded from Fanxiang Cloud to your phone are stored in "Downloaded". You can view the downloaded content even if the device is not online.



8.2Documents

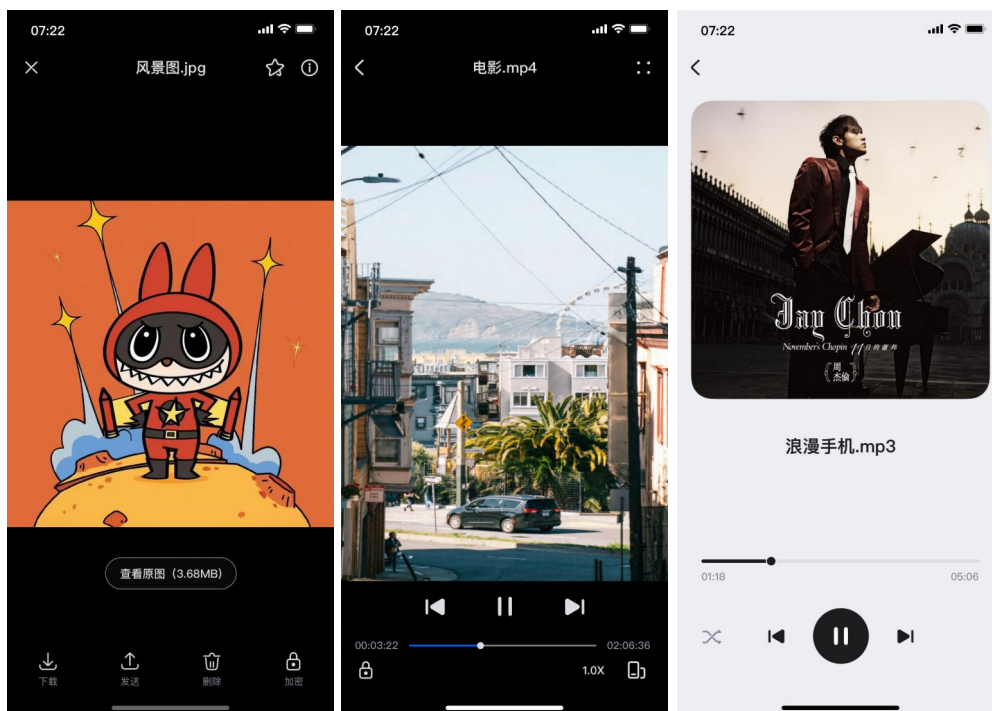
## 1, File Management

User throughAPPFiles uploaded to the Fanxiang Cloud device support sharing, deletion, renaming, collection and other file operations



## 2, File browsing

User throughAPPFiles uploaded to Fanxiang Cloud can be browsed online.



8.3mine

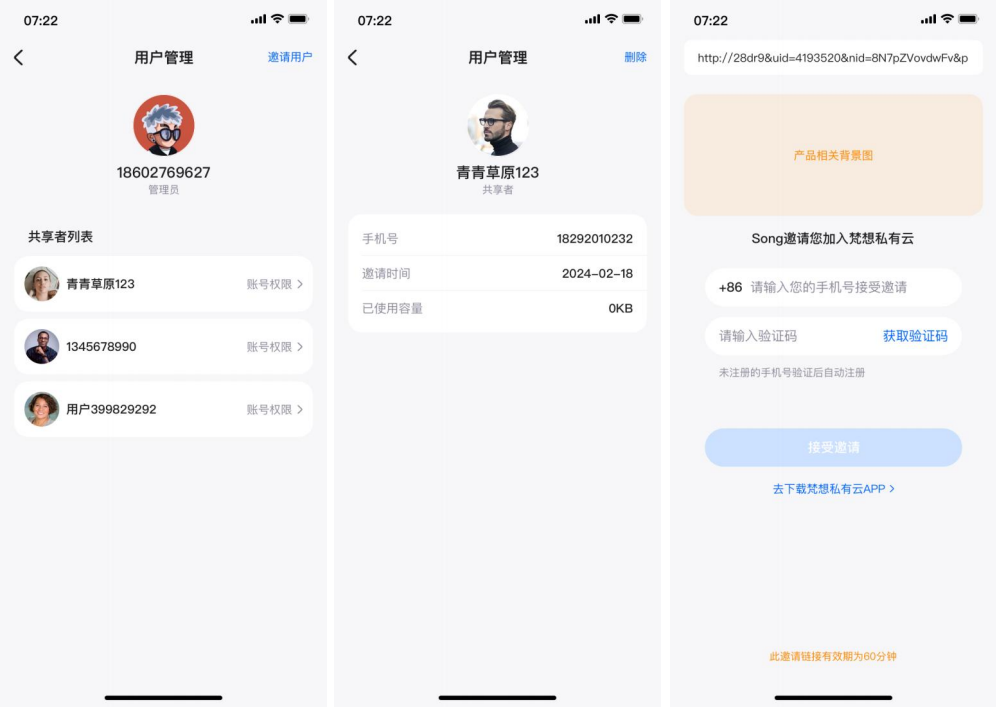
1, Equipment Management

Users canAPPManage the software and hardware of Fanxiang Cloud devices; support viewing device information, configuring network information, hardware settings, system upgrades, etc.



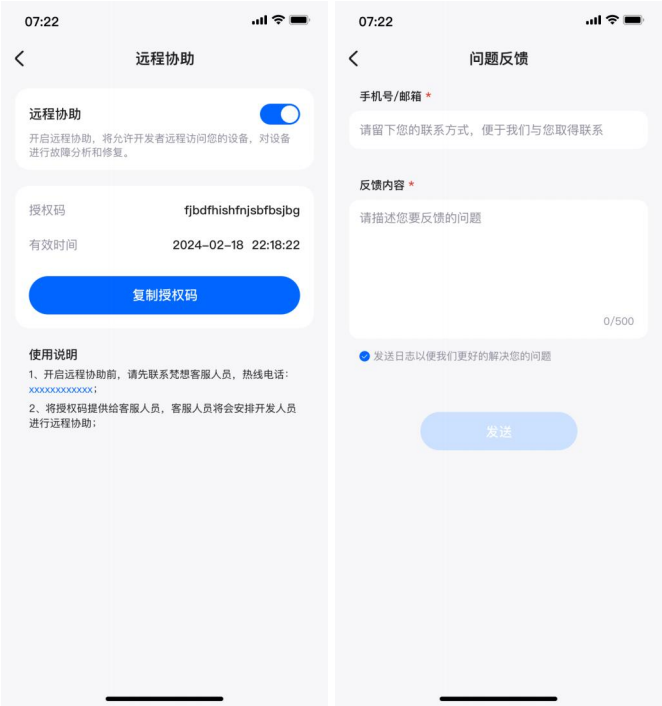
2, User Management

Device administrators can invite friends to join and use Fanxiang Cloud devices through links.



3, Service and Support

If users encounter problems during use, they can contact us through online customer service, help center, remote assistance, etc.



### FCC Warning

This device complies with part 15 of the FCC Rules. Operation is subject to the following two conditions:

(1) This device may not cause harmful interference, and (2) this device must accept any interference received, including interference that may cause undesired operation.

Any Changes or modifications not expressly approved by the party responsible for compliance could void the user's authority to operate the equipment.

Note: This equipment has been tested and found to comply with the limits for a Class B digital device, pursuant to part 15 of the FCC Rules. These limits are designed to provide reasonable protection against harmful interference in a residential installation. This equipment generates uses and can radiate radio frequency energy and, if not installed and used in accordance with the instructions, may cause harmful interference to radio communications. However, there is no guarantee that interference will not

occur in a particular installation. If this equipment does cause harmful interference to radio or television

reception, which can be determined by turning the equipment off and on, the user is encouraged to try to

correct the interference by one or more of the following measures:

- Reorient or relocate the receiving antenna.

- Increase the separation between the equipment and receiver.

- Connect the equipment into an outlet on a circuit different from that to which the receiver is connected.

- Consult the dealer or an experienced radio/TV technician for help.

This equipment complies with FCC radiation exposure limits set forth for an uncontrolled environment.

This equipment should be installed and operated with minimum distance 20cm between the radiator & your body.