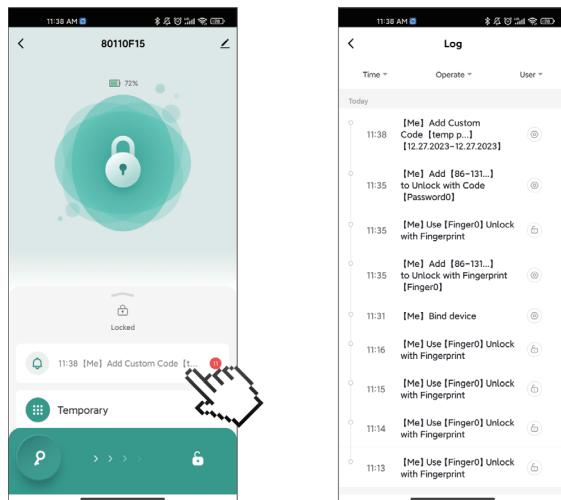
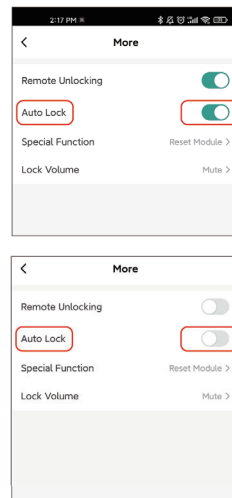
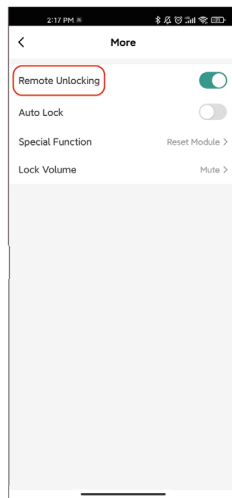
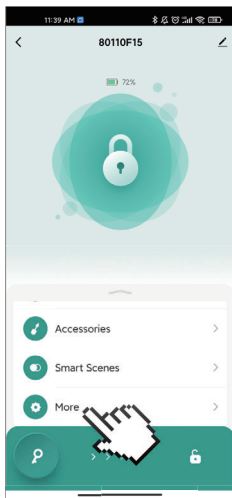


## 6. Log



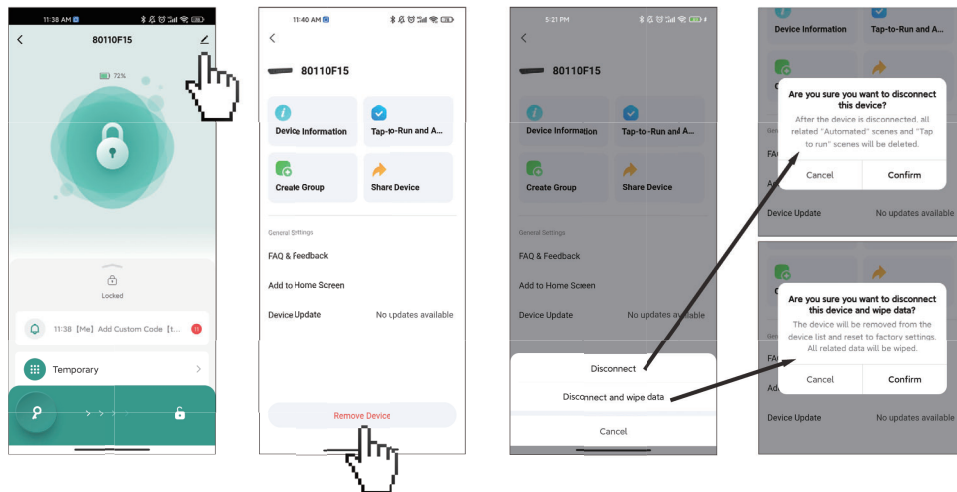
a. You can view the unlocking records and operation logs.

## 7. More



- Remote unlocking: It needs to be used in conjunction with the gateway (gateway needs to be purchased separately).
- Auto lock: Activating the automatic lock switch and turning it off again, the lock is in passage mode. Unlocking with the correct fingerprint or password will turn off the passage mode.
- Door lock volume: Mute setting, lock end entering menu will broadcast voice.

## 8. Unbind



- a. Unbind: The unlocking record is still retained.
- b. Disconnect: The device is disconnected, all related “Automated” and “Tap to run” scenes will be deleted.
- c. Disconnect and wipe data: The device will be removed from the device list and reset to factory settings, and all related data will be clear.

## 9. Reset



Press the Reset button  
and hold for 5 seconds



Success

**Warning:** Reset will Delete all administrator and user information, Please operate with caution.

## 10. Keep Unlocked Mode



Press the button < 1 second



Keep unlocked mode

## 11. Disable Unlocked Mode



(Unlocked Mode)  
Press the button again  
or  
Correct password/  
fingerprint



Disable unlocked mode

## Q&A

### **Q1. What range of thickness is this smart lock with handle suitable for?**

1.38 inches -2.17 inches (35~55mm).

### **Q2. Do I need to drill holes to install the door handle lock? If needed, what type of drill should I use?**

No need.

### **Q3. Is this door lock with a keypad suitable for outdoor use?**

Yes.

### **Q4. Why can't the door close after installing the biometric door lock?**

Because the direction of the latch is wrong, please refer to the user manual to adjust the direction of the latch.

### **Q5. Why the lock can't power on?**

A. Please check the cable installed correctly

B. Please check the battery has sufficient power and is installed correctly.

### **Q6. What type of battery do I need to use? How long will the battery last?**

We recommend that the Bluetooth door lock use 4 AAA alkaline batteries, but you can also use rechargeable batteries! About 3-6 months.

## Q&A

### **Q7. Can't connect with smart lock with my phone via APP?**

Please check the phone's Bluetooth turn on and touch the lock's keypad first before connecting.

### **Q8. Can I turn off the auto-lock feature?**

Yes with APP.

### **Q9. Can the phone display the remaining battery life of the lock?**

Yes with APP.

### **Q10. Why anyone's fingerprints can't unlocked the lock?**

A. please check that the correct fingerprint registered in the lock before unlock.

B. You need to press one finger more than 5 times and try to ensure that multiple areas of the finger are read when you adding(registered) fingerprint.

C. Only one fingerprint can be added(registered) each time.

D. Dirty or worn fingers are difficult to read.

### **Q11. Why does it keep failing when adding a password?**

Password must be 6-10 digits to take effect. Also the password cannot be consecutive 6 digits or the repetitive 6 digits like 123456; 666666...etc.

**FCC Warning:**

This equipment has been tested and found to comply with the limits for a Class B digital device, pursuant to part 15 of the FCC Rules. These limits are designed to provide reasonable protection against harmful interference in a residential installation. This equipment generates, uses and can radiate radio frequency energy and, if not installed and used in accordance with the instructions, may cause harmful interference to radio communications. However, there is no guarantee that interference will not occur in a particular installation. If this equipment does cause harmful interference to radio or television reception, which can be determined by turning the equipment off and on, the user is encouraged to try to correct the interference by one or more of the following measures:

- Reorient or relocate the receiving antenna.
- Increase the separation between the equipment and receiver.
- Connect the equipment into an outlet on a circuit different from that to which the receiver is connected.
- Consult the dealer or an experienced radio/TV technician for help.

**Caution:** Any changes or modifications to this device not explicitly approved by manufacturer could void your authority to operate this equipment.

This device complies with part 15 of the FCC Rules. Operation is subject to the following two conditions:

(1) This device may not cause harmful interference, and (2) this device must accept any interference received, including interference that may cause undesired operation.

This equipment complies with FCC radiation exposure limits set forth for an uncontrolled environment. This equipment should be installed and operated with minimum distance 0cm between the radiator and your body.