

User Manual



Parameters

Cover: D70mm / Lever: L150mm / Height: 62mm

Material: Aluminum alloy + Acrylic

Available Thickness: 35mm~55mm

Unlock Way: Key/Fingerprint/Password/Tuya APP

Power Supply: 4 * AAA Alkaline Batteries

Emergency Supply: USB (Type-C Interface)

Working Voltage: 6V Alarm Voltage: 4.8V

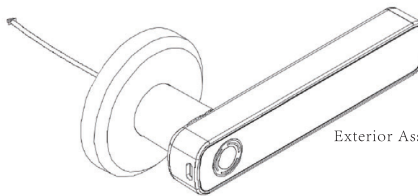
Capacity: Fingerprint--50sets

Password--100sets

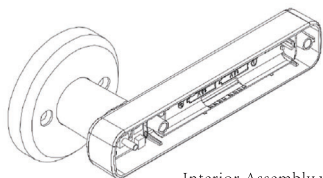
Parts list



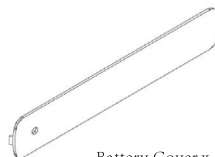
Key x 2



Exterior Assembly x 1



Interior Assembly x 1



Battery Cover x 1



Screwdriver x1



Spring x1



Screw Bolt x2



Screw x2



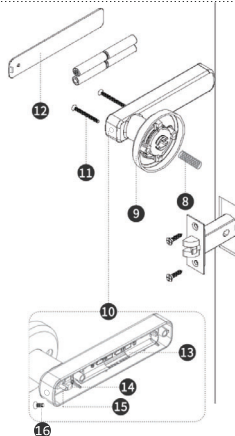
Hollow Square Bar x1



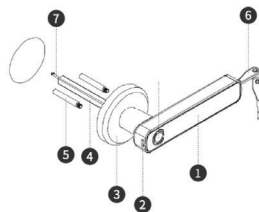
Battery Cover
Fixing Screw x1

Overall

Back Handle



Front Handle



1.Front Handle

2.Emergency power supply

3.Front Cover

4.Hollow Square Bar

5.Screw Bolt

6.Key

7.Data Line

8.Spring
(The door thickness $\geq 50\text{mm}$)

9.Back Cover

10.Back Handle

11.Screw

12.Battery Cover

13.Battery Box

14.Data Line Interface

15.Setting Button

16.Battery Cover
Fixing Screw

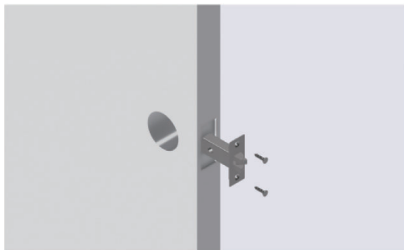
Installation

1. The product is a Tuya Bluetooth lock, the administrator of the APP is the ultimate administrator of the lock, and the operation function of the lock end is an auxiliary operation, please be sure to download the Smart Life APP to bind the administrator, unless it can be ensured that the lock will not be used by people APP is bundled.

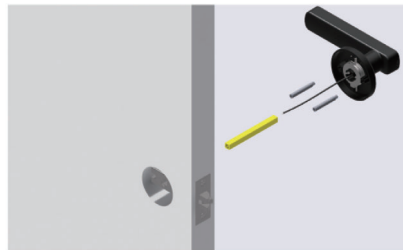
2. Before it is installed on the door, be sure to insert the square rod into the bottom of the front handle before trying to twist the key to unlock it. After the product is installed on the door, make sure the square rod is positioned correctly before twisting the key.

WARNING: Blindly twisting the key can cause mechanical failure of the product.

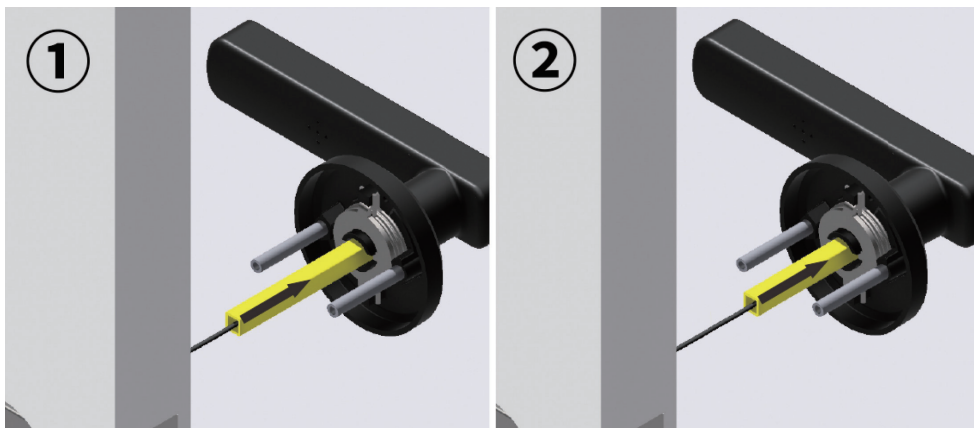
3. The front handle connecting the wire terminal needs to be inserted into the female seat of the rear handle setting plate according to the marking (red to red), otherwise, it will cause a short circuit.



01. Drill holes on the door and install the lock body according to the drawings



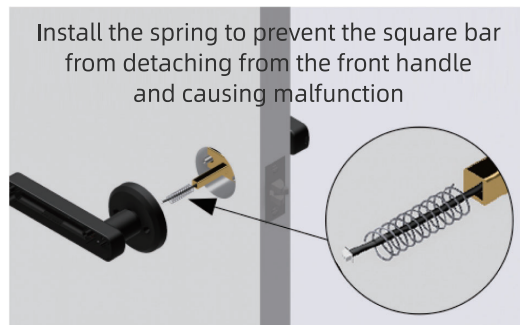
02. Install the two screw bolts on the front cover, Insert the hollow square bar into the bottom of the front lever and let the data line stick out



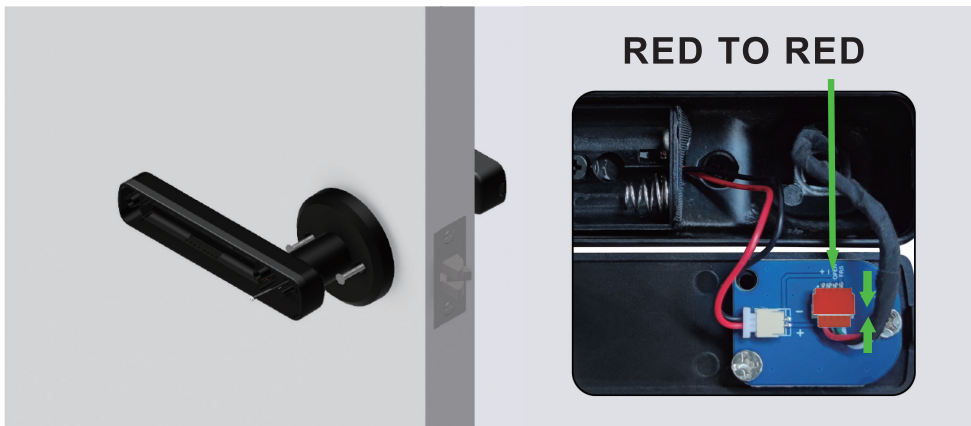
03. Please be sure to insert the square bar into the front handle to the end, otherwise it will affect the normal use of the product.



04. Insert the exterior assembly into the door hole



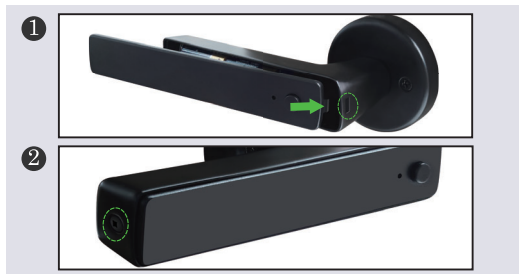
05. Install the interior assembly on the door. Make sure the connection wire goes through the spring and the back handle.



06. Tighten the door lock with two screws and connect the data cable.
Be sure to follow the markings (red to red) to connect the cable terminal to the female socket of the setting board, otherwise, it will cause a short circuit in the product.



07. Install 4 X AAA alkaline batteries



08. As shown in the picture, Align the head of the rear handle with the latch, then install the battery cover fixing screw

Warning!

The product is a Tuya Bluetooth lock, please be sure to download the (**Smart Life**) APP and register before use, please check that the lock with Factory default state then you can use the APP with it well.

Step 1 ➡ Download and install the "Smart Life" APP .

(Note: Users can also download the "Tuya Smart" APP, and the setting and usage methods are the same) Users can also download and install the APP by scanning the QR code below:



or

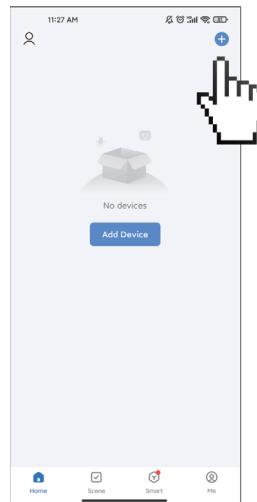


Step 2 ➡ Register and log in.

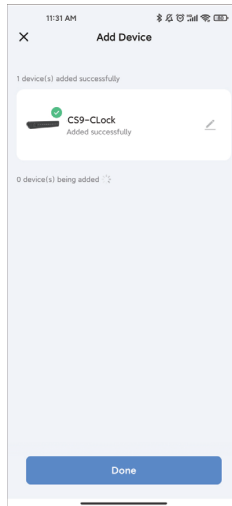


Register your account with your phone number or email.

Step 3 ➡ Add lock.



Click **Add Device** button and touch any lock's key.

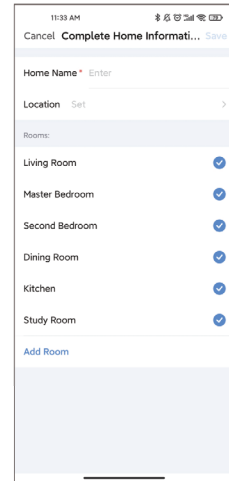
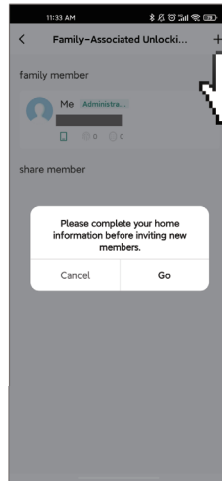
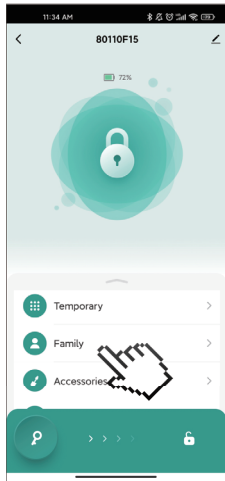


Add the lock named "CS9-CLock" on the app.

Step 4 ➡ Congratulations! You can use the lock with APP now!

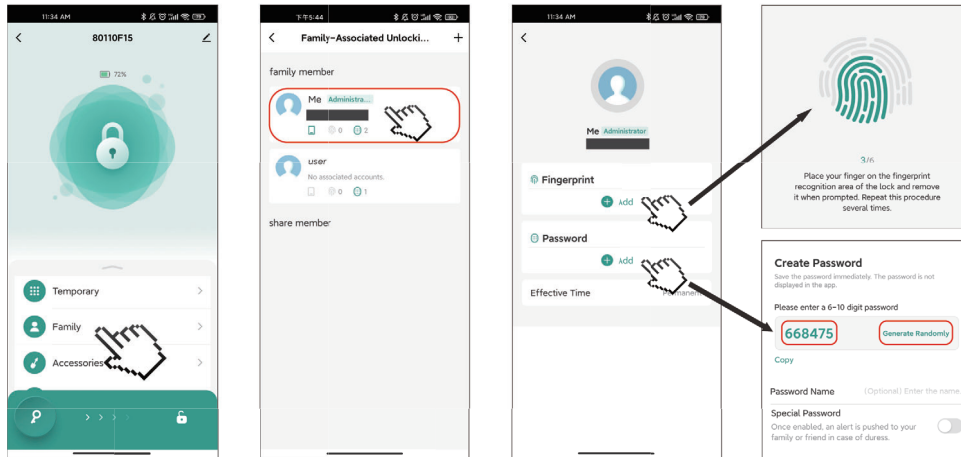
APP Function

1. Improve family information



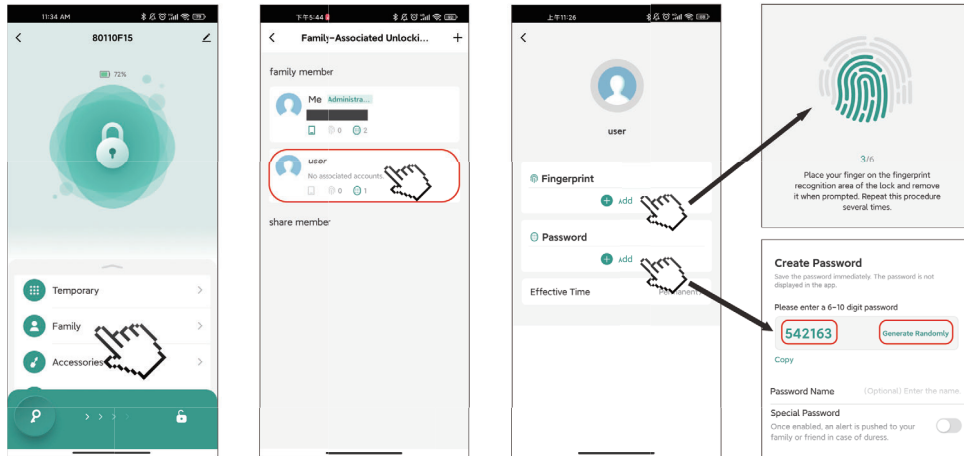
a. Quickly select and complete family information.

2. Add administrator fingerprint or password



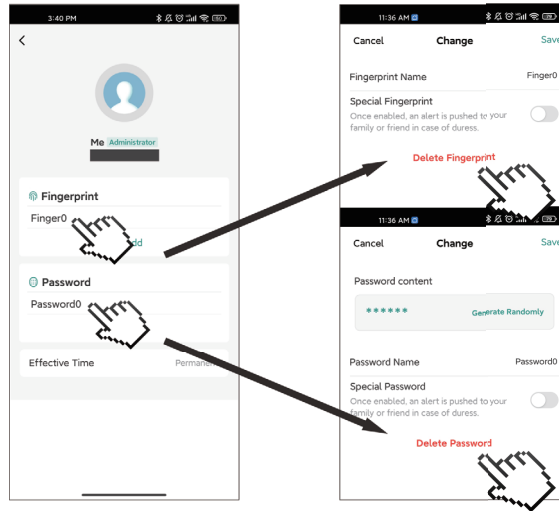
- Add administrator fingerprint information registration in the family.
- To register an administrator fingerprint, you need to enter the repetitive fingerprint six times, and you can enter a name note after entering the administrator fingerprint.
- You can enter your preferred administrator password.
- The administrator password cannot be six repetitive numbers like “666666” or consecutive numbers like “456789”.
- The administrator password can be randomly generated, and the administrator password needs to be remembered.

3. Add user or other family member fingerprint or password

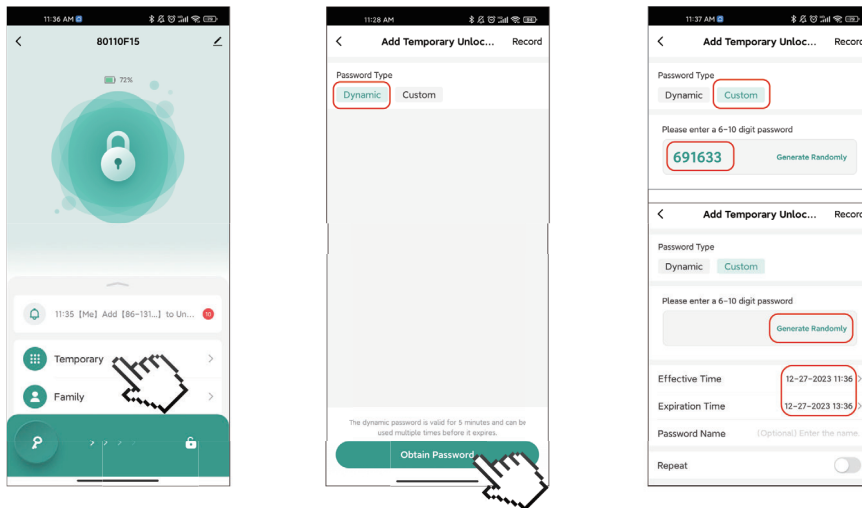


- Add user fingerprint information registration in the family.
- To register a user fingerprint, you need to enter the repetitive fingerprint six times, and you can enter a name note after entering the user fingerprint.
- You can enter your preferred user password.
- The user password cannot be six repetitive numbers like “666666” or consecutive numbers like “456789”.
- The user password can be randomly generated, and the administrator password needs to be remembered.

4. Delete fingerprint and password



5. Temporary password



- a. Dynamic password is valid for 5 minutes and can be used multiple times before it expires.
- b. You can customize your preferred password.
- c. The password can be randomly generated, and you can set an effective time.