


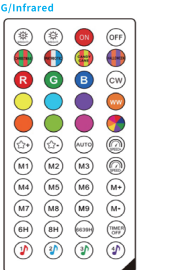



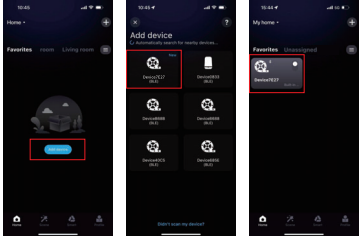

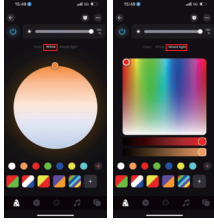
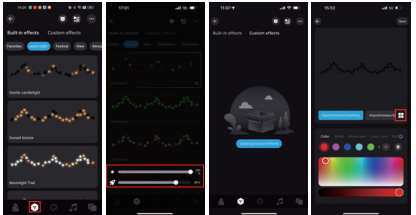
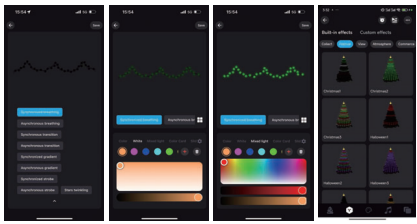
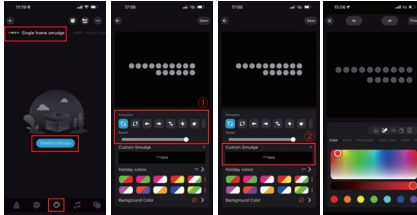


145 mm

145 mm

Remote Control Description 	Remote Control Description 	Remote Control Description 
<p>1314 Remote Control 44 Keys 2.4G/Infrared</p>  <p>1 Rotation Mode: 1314 dynamic modes built into the remote control. You can switch between the two AB keys by long-pressing short press.</p> <p>2 Color Zone: Source Color: Two/Three/Color Random Distribution</p> <p>3 Color Zone: Monochrome/Color</p> <p>4 Color Zone: Dynamic Effect Rotation</p> <p>5 Color Zone: Add/Remove dynamic effects from the current rotation (long press 2s effect)</p> <p>6 Color Zone: The current state: When a color mode is selected, long-pressing the key will switch to the next color mode. When a color mode is selected, long-pressing the key will switch to the next color mode.</p> <p>7 Color Zone: The current state: When a color mode is selected, long-pressing the key will switch to the next color mode. When a color mode is selected, long-pressing the key will switch to the next color mode.</p> <p>8 Color Zone: The current state: When a color mode is selected, long-pressing the key will switch to the next color mode. When a color mode is selected, long-pressing the key will switch to the next color mode.</p> <p>9 Color Zone: The current state: When a color mode is selected, long-pressing the key will switch to the next color mode. When a color mode is selected, long-pressing the key will switch to the next color mode.</p> <p>10 Color Zone: The current state: When a color mode is selected, long-pressing the key will switch to the next color mode. When a color mode is selected, long-pressing the key will switch to the next color mode.</p> <p>11 Color Zone: The current state: When a color mode is selected, long-pressing the key will switch to the next color mode. When a color mode is selected, long-pressing the key will switch to the next color mode.</p> <p>12 Color Zone: The current state: When a color mode is selected, long-pressing the key will switch to the next color mode. When a color mode is selected, long-pressing the key will switch to the next color mode.</p> <p>13 Color Zone: The current state: When a color mode is selected, long-pressing the key will switch to the next color mode. When a color mode is selected, long-pressing the key will switch to the next color mode.</p> <p>14 Color Zone: The current state: When a color mode is selected, long-pressing the key will switch to the next color mode. When a color mode is selected, long-pressing the key will switch to the next color mode.</p> <p>15 Color Zone: The current state: When a color mode is selected, long-pressing the key will switch to the next color mode. When a color mode is selected, long-pressing the key will switch to the next color mode.</p> <p>16 Color Zone: The current state: When a color mode is selected, long-pressing the key will switch to the next color mode. When a color mode is selected, long-pressing the key will switch to the next color mode.</p> <p>17 Color Zone: The current state: When a color mode is selected, long-pressing the key will switch to the next color mode. When a color mode is selected, long-pressing the key will switch to the next color mode.</p> <p>18 Color Zone: The current state: When a color mode is selected, long-pressing the key will switch to the next color mode. When a color mode is selected, long-pressing the key will switch to the next color mode.</p> <p>19 Color Zone: The current state: When a color mode is selected, long-pressing the key will switch to the next color mode. When a color mode is selected, long-pressing the key will switch to the next color mode.</p> <p>20 Color Zone: The current state: When a color mode is selected, long-pressing the key will switch to the next color mode. When a color mode is selected, long-pressing the key will switch to the next color mode.</p> <p>21 Color Zone: The current state: When a color mode is selected, long-pressing the key will switch to the next color mode. When a color mode is selected, long-pressing the key will switch to the next color mode.</p> <p>22 Color Zone: The current state: When a color mode is selected, long-pressing the key will switch to the next color mode. When a color mode is selected, long-pressing the key will switch to the next color mode.</p> <p>23 Color Zone: The current state: When a color mode is selected, long-pressing the key will switch to the next color mode. When a color mode is selected, long-pressing the key will switch to the next color mode.</p> <p>24 Color Zone: The current state: When a color mode is selected, long-pressing the key will switch to the next color mode. When a color mode is selected, long-pressing the key will switch to the next color mode.</p> <p>25 Color Zone: The current state: When a color mode is selected, long-pressing the key will switch to the next color mode. When a color mode is selected, long-pressing the key will switch to the next color mode.</p> <p>26 Color Zone: The current state: When a color mode is selected, long-pressing the key will switch to the next color mode. When a color mode is selected, long-pressing the key will switch to the next color mode.</p> <p>27 Color Zone: The current state: When a color mode is selected, long-pressing the key will switch to the next color mode. When a color mode is selected, long-pressing the key will switch to the next color mode.</p> <p>28 Color Zone: The current state: When a color mode is selected, long-pressing the key will switch to the next color mode. When a color mode is selected, long-pressing the key will switch to the next color mode.</p> <p>29 Color Zone: The current state: When a color mode is selected, long-pressing the key will switch to the next color mode. When a color mode is selected, long-pressing the key will switch to the next color mode.</p> <p>30 Color Zone: The current state: When a color mode is selected, long-pressing the key will switch to the next color mode. When a color mode is selected, long-pressing the key will switch to the next color mode.</p> <p>31 Color Zone: The current state: When a color mode is selected, long-pressing the key will switch to the next color mode. When a color mode is selected, long-pressing the key will switch to the next color mode.</p> <p>32 Color Zone: The current state: When a color mode is selected, long-pressing the key will switch to the next color mode. When a color mode is selected, long-pressing the key will switch to the next color mode.</p> <p>33 Color Zone: The current state: When a color mode is selected, long-pressing the key will switch to the next color mode. When a color mode is selected, long-pressing the key will switch to the next color mode.</p> <p>34 Color Zone: The current state: When a color mode is selected, long-pressing the key will switch to the next color mode. When a color mode is selected, long-pressing the key will switch to the next color mode.</p> <p>35 Color Zone: The current state: When a color mode is selected, long-pressing the key will switch to the next color mode. When a color mode is selected, long-pressing the key will switch to the next color mode.</p> <p>36 Color Zone: The current state: When a color mode is selected, long-pressing the key will switch to the next color mode. When a color mode is selected, long-pressing the key will switch to the next color mode.</p> <p>37 Color Zone: The current state: When a color mode is selected, long-pressing the key will switch to the next color mode. When a color mode is selected, long-pressing the key will switch to the next color mode.</p> <p>38 Color Zone: The current state: When a color mode is selected, long-pressing the key will switch to the next color mode. When a color mode is selected, long-pressing the key will switch to the next color mode.</p> <p>39 Color Zone: The current state: When a color mode is selected, long-pressing the key will switch to the next color mode. When a color mode is selected, long-pressing the key will switch to the next color mode.</p> <p>40 Color Zone: The current state: When a color mode is selected, long-pressing the key will switch to the next color mode. When a color mode is selected, long-pressing the key will switch to the next color mode.</p> <p>41 Color Zone: The current state: When a color mode is selected, long-pressing the key will switch to the next color mode. When a color mode is selected, long-pressing the key will switch to the next color mode.</p> <p>42 Color Zone: The current state: When a color mode is selected, long-pressing the key will switch to the next color mode. When a color mode is selected, long-pressing the key will switch to the next color mode.</p> <p>43 Color Zone: The current state: When a color mode is selected, long-pressing the key will switch to the next color mode. When a color mode is selected, long-pressing the key will switch to the next color mode.</p> <p>44 Color Zone: The current state: When a color mode is selected, long-pressing the key will switch to the next color mode. When a color mode is selected, long-pressing the key will switch to the next color mode.</p> <p>Featured Functions</p> <p>1) In any mode, the background color can be switched by short press on the color area button. After successfully switching the background color, short press the color again to enter static mode.</p>	<p>Remote control M+/- and controller key mode list</p> <p>1. Synchronized breathing</p> <p>2. Asynchronous breathing</p> <p>3. Synchronous transition</p> <p>4. Asynchronous transition</p> <p>5. Synchronous gradient</p> <p>6. Asynchronous gradient</p> <p>7. Synchronous strobe</p> <p>8. Asynchronous strobe</p> <p>9. Stars twinkling</p> <p>10. Blossom</p> <p>11. Horse racing</p> <p>12. meteor</p> <p>13. Running water</p> <p>14. Cover</p> <p>15. Building Blocks</p> <p>16. Fill gradient</p> <p>17. Fill transition</p> <p>18. Fill breath</p> <p>19. Colorful and always bright</p> <p>20. Colorful flashes</p> <p>21. Colorful breath</p> <p>22. Collision</p> <p>23. Interval</p> <p>24. Gorgeous</p> <p>25. Segmented asynchronous breathing</p> <p>26. Segmented asynchronous jump</p> <p>27. Segmented asynchronous strobe</p> <p>28. Colorful horse racing</p> <p>29. Blinking transition</p> <p>30. Squirm</p> <p>31. Color by color asynchronous flashing</p> <p>32. Accumulation</p> <p>33. Shuttle</p> <p>34. Tunneling</p> <p>The list of key modes additionally includes the following modes</p> <p>35. Static Red</p> <p>36. Static Orange</p> <p>37. Static Yellow</p> <p>38. Static Green</p> <p>39. Static Cyan</p> <p>40. Static blue</p> <p>41. Static Purple</p> <p>42. Static white</p> <p>43. Static warm light</p>	<p>Remote Rotation Function   Introduction to use</p> <p>1. Rotation  Pattern list can play up to 12 patterns, each pattern plays for 10s</p> <p>2. Factory default has put 9 modes</p> <p>3. When rotating, it can be done by short pressing the</p> <p>4. When rotating, if you don't like the current mode, you can long press the</p> <p>5. through the app/remote control of other functions, debugging of any new mode, can be long-pressed</p> <p>Example: After deleting M18, the AUTO list becomes</p> <p>Example: New meteor mode, AUTO list becomes</p> <p>The above is the description of the remote control, and the following is the description of the "Surplife" app.</p>
<p>3) Enter "Surplife" app, tap "Add Device" or click "+" to add the device. Click Add to complete</p>  <p>III. APP FUNCTION DETAILS</p> <p>1) Colorful Function</p> <p>1) Provide 16 million colors to choose from, click "+" in the lower right corner to add different color choices.</p> <p>2) You can adjust the brightness.</p> 	<p>3) You can add white light or mixed light, mixed light is a single color mixed with white light, you can adjust the saturation of the single color.</p>  <p>2) Lighting Effects</p> <p>1) Long press the mode effect to create a new custom effect mode, select different colors and light effects, right click and the settings icon below can adjust the brightness and speed of the light.</p> <p>2) You can select different light effect modes and adjust the speed brightness, density or length of the mode.</p> 	<p>3) You can add white light or mixed light, mixed light is a single color mixed with white light, you can adjust the saturation of the single color.</p> <p>4) Built-in effect scenes can be changed by brushing, such as tree lights and exploding stars.</p>  <p>3) Paint function</p> <p>1) Single-frame smudge: only single-frame animation can be smudged and rich animation settings can be made.</p> <p>2) custom paint: self-selected color to paint, you can also adjust the color saturation, paint interface can be displayed in real time on the light string</p> 
— 5 —	— 6 —	— 7 —

I. Download Surplife APP

Download "Surplife" APP from Apple Store and Google Play Store, or scan the QR code.

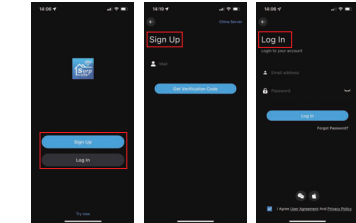


Surplife APP



II. How to connect the controller to Wi-Fi network?

1) Register/Login your Surplife account.

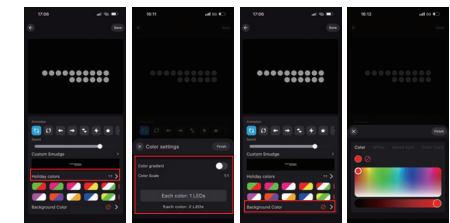


2) Open your phone Bluetooth, turn on the device.

— 4 —

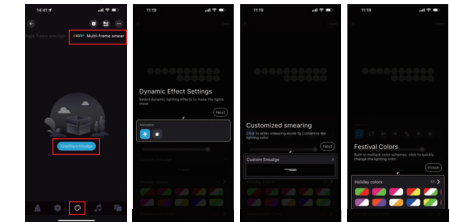
3) Color Settings: Adjust color gradient effect, color ratio and each color, add colored light, white light or mixed light.

4) Background color settings: turn on or off the background color, customize the background color color.



4) Multi-frame paint

1) Can paint multiple frames, single frame is static by default, at least two frames for dynamic running.

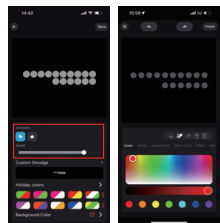


— 8 —

145 mm

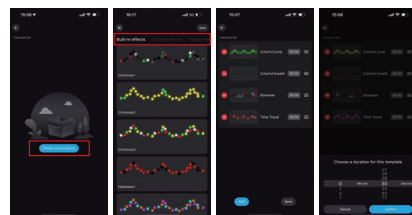
145 mm

2)The paint interface is as follows, the paint effect can be displayed on the string in real time, long press can be copied, and multiple frames can be sorted.



5)Rotation function

Select different categories of lighting effect modes to save, and set the time of lighting effects. Combine different lighting effects for sequential playback. Long press to drag the sequence to edit.

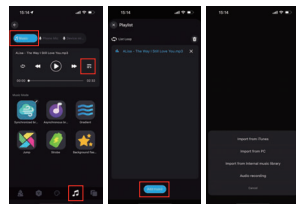


— 9 —

6)Music Rhythm

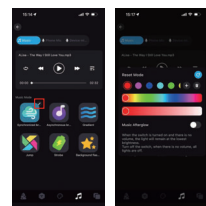
③Music Mode: The light changes with the rhythm of the music, you can choose different music modes.

Click Add Music to import music files or import from the built-in music library. Please note: iOS requires downloading music files to iTunes or importing music from PC according to the instructions, and selecting music from the built-in modes or recordings. Android requires downloading music files to your phone in order to use it.



7)Afterglow Edit Mode

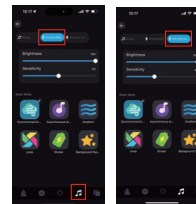
1) You can set the color you want and restore the default color parameters with the reset button.



— 10 —

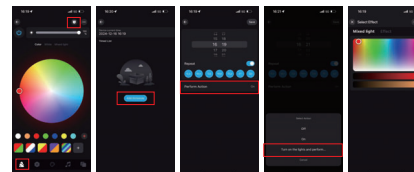
2)Microphone

Cell phone microphone or device microphone function (voice-activated version only), according to the signal received by the microphone into different rhythms of the lighting effects, you can choose different music effects mode, you can adjust the brightness and sensitivity.



8)Timing Functions

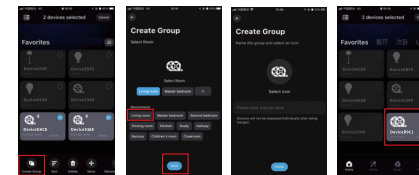
a). According to the time you set, you can switch on and off the lights under your control.
b) When you turn on the light, you can freely choose different lighting effects in color or mode.



— 11 —

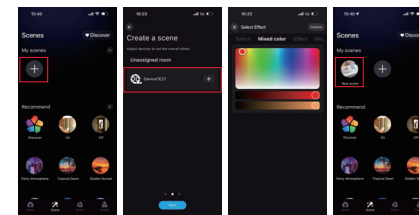
9)Group control function

Classify multiple controllers into the same group, you can simultaneously control the equipment in the group with one key dimming and color dimming, switching and other functions.



10)Scene Function

In the scene interface, according to individual needs to find the corresponding controller to create different scenes of light color or dynamic effects.



— 12 —

Attentions

- 1) Please use the product in a dry environment.
- 2) For input voltage, please use the DC voltage within the specified range as instructed in the manual, must not connect into 220VAC directly.
- 3) The product is requested common anode connection. The wrong connection will cause a malfunction.

— 13 —

WARNING

INGESTION HAZARD: This product contains a button cell or coin battery.
DEATH or serious injury can occur if ingested.
A swallowed button cell or coin battery can cause Internal Chemical Burns in as little as 2 hours.
KEEP new and used batteries OUT OF REACH of CHILDREN
Seek immediate medical attention if a battery is suspected to be swallowed or inserted inside any part of the body.



The battery type is a lithium-metal, non-rechargeable CR2025.
The nominal battery voltage is 3V DC.

— 14 —

FCC WARNING

This device complies with part 15 of the FCC Rules. Operation is subject to the following two conditions: (1) this device may not cause harmful interference, and (2) this device must accept any interference received, including interference that may cause undesired operation. Any changes or modifications not expressly approved by the party responsible for compliance could void the user's authority to operate the equipment.

NOTE: This equipment has been tested and found to comply with the limits for a Class B digital device, pursuant to Part 15 of the FCC Rules. These limits are designed to provide reasonable protection against harmful interference in a residential installation. This equipment generates, uses and can radiate radio frequency energy and, if not installed and used in accordance with the instructions, may cause harmful interference to radio communications.

However, there is no guarantee that interference will not occur in a particular installation. If this equipment does cause harmful interference to radio or television reception, which can be determined by turning the equipment off and on, the user is encouraged to try to correct the interference by one or more of the following measures:

- Reorient or relocate the receiving antenna.
 - Increase the separation between the equipment and receiver.
 - Connect the equipment into an outlet on a circuit different from that to which the receiver is connected.
 - Consult the dealer or an experienced radio/TV technician for help.
- To maintain compliance with FCC's RF Exposure guidelines, This equipment should be installed and operated with minimum 20cm distance between the radiator and your body. Use only the supplied antenna.

— 15 —

BraveDream

Warranty Contact:

Email: bravedream_support@rhll.cn

Contact us for warranty claims.

Amazon Order ID required.

— 16 —