

145 mm

# BraveDream

Warranty Contact:

Email: [bravedream\\_support@rhill.cn](mailto:bravedream_support@rhill.cn)

Contact us for warranty claims.

Amazon Order ID required.

— 12 —

## USER INSTRUCTION

### Ble Led Controller



#### I .Product Parameter:

Category	LED Controller
Domination Principle	Ble
APP	Surplife
Operation Platform	Android 7.0 or IOS12.0 or later
Input Voltage	DC5V
Supported Driver IC	WS2812B,SM16703,SM16704, WS2811,UCS1903,SK6812, INK1003,UCS2904B
Working Temperature	-20~+55°C
Control Distance	Visible distance 30M
Certification	CE, RoHS, FCC
Dimension	69mm*25mm*18mm

— 1 —

105 mm

105 mm

145 mm

### III. Download Apps

Download "Surplife" APP from Apple Store and Google Play Store, or scan the QR code.

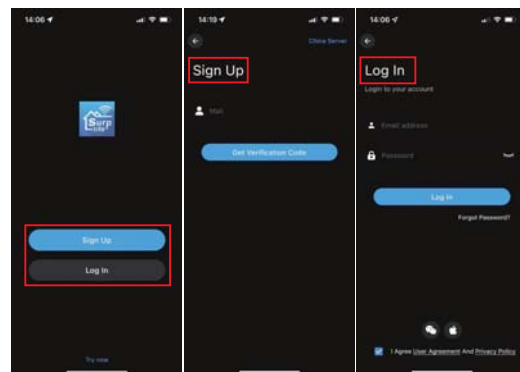


Surplife APP



### IV. How to connect Surplife App?

1) Register/Login your Surplife account.



2) Open your phone Bluetooth, turn on the device.

— 2 —



## WARNING

**INGESTION HAZARD:** This product contains a button cell or coin battery.

**DEATH** or serious injury can occur if ingested.

A swallowed button cell or coin battery can cause

**Internal Chemical Burns** in as little as **2 hours**.

**KEEP** new and used batteries **OUT OF REACH of CHILDREN**

**Seek immediate medical attention** if a battery is suspected to be swallowed or inserted inside any part of the body.



— 11 —

105 mm

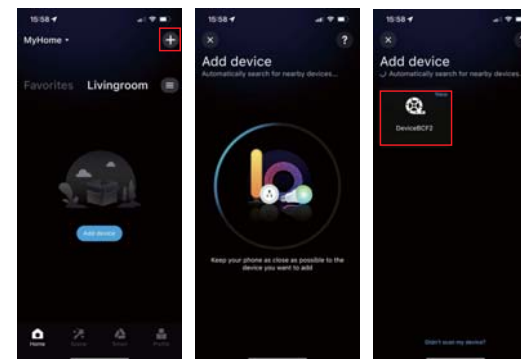
105 mm

145 mm

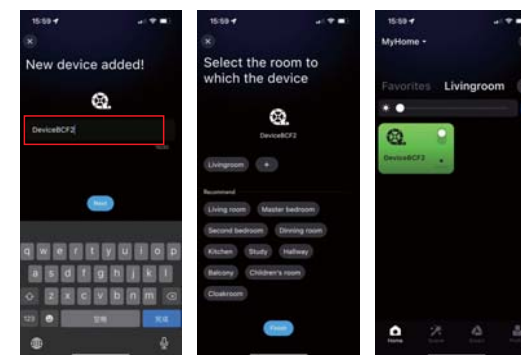
**FCC WARNING**

This device complies with part 15 of the FCC Rules. Operation is subject to the following two conditions: (1) this device may not cause harmful interference, and (2) this device must accept any interference received, including interference that may cause undesired operation. Any changes or modifications not expressly approved by the party responsible for compliance could void the user's authority to operate the equipment. NOTE: This equipment has been tested and found to comply with the limits for a Class B digital device, pursuant to Part 15 of the FCC Rules. These limits are designed to provide reasonable protection against harmful interference in a residential installation. This equipment generates, uses and can radiate radio frequency energy and, if not installed and used in accordance with the instructions, may cause harmful interference to radio communications. However, there is no guarantee that interference will not occur in a particular installation. If this equipment does cause harmful interference to radio or television reception, which can be determined by turning the equipment off and on, the user is encouraged to try to correct the interference by one or more of the following measures: Reorient or relocate the receiving antenna. Increase the separation between the equipment and receiver. Connect the equipment into an outlet on a circuit different from that to which the receiver is connected. Consult the dealer or an experienced radio/TV technician for help. To maintain compliance with FCC RF Exposure guidelines, This equipment should be installed and operated with minimum 20mm distance between the radiator and your body: Use only the supplied antenna.

3) Enter "Surplife" app, tap "Add Device" or click "+" to add the device.



4) Rename the device and select a room for it.



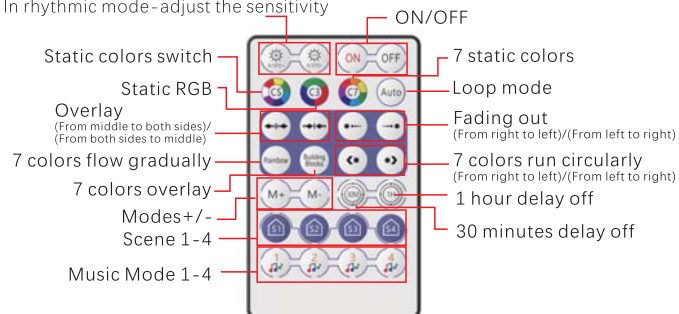
105 mm

105 mm

145 mm

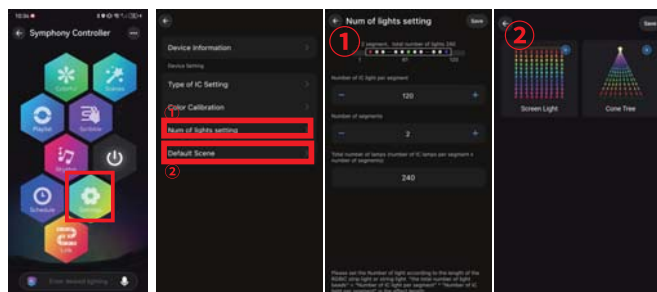
## II. Remote Control Instructions

When in static mode-tune brightness  
When in dynamic mode-adjust the speed  
In rhythmic mode-adjust the sensitivity



## III. About Settings:

- 1) In the setting interface, you can set the IC model, color correction, number of points (Total number of points can not exceed 500 in each segment and total LED chips quantity can not exceed 2048)
- 2) The setting of IC number is applied to the smearing function

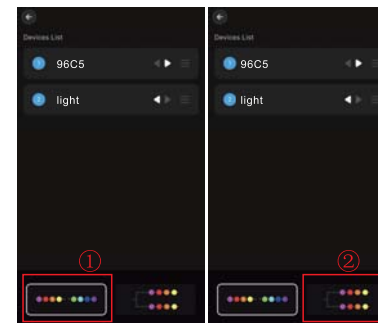


— 4 —

## H). Link

Setting a group for the strip lights, enjoy the linkage lighting effect. Hold and drag the device on the list to change the order and the direction.

- ① The grouped light strips synchronized Linkage
- ② The grouped light strips change sequentially



## Attentions

- Please use the product in a dry environment.
- For input voltage, please use the DC voltage within the specified range as instructed in the manual, must not connect into 220V AC directly.
- The product is requested common anode connection. The wrong connection will cause a malfunction.

— 9 —

105 mm

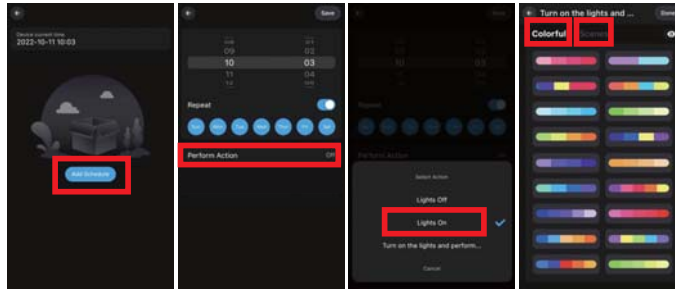
105 mm

145 mm

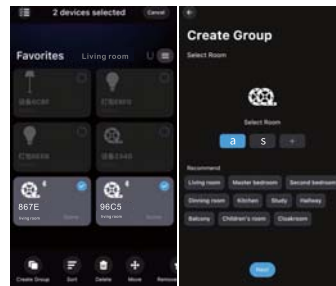
10.5x14.5cm-锥形灯英文说明书第8页

**F) Light timer**

Smart lights automatically come on and off at given times through the timer function, choose your favorite effect and color then save it

**G) Group Control**

This mode allows you to create different groups to control more than one controllers at the same time.

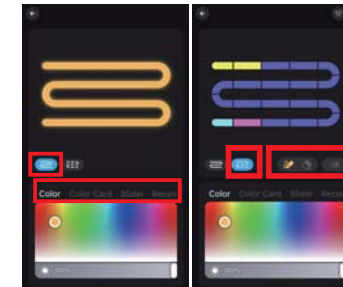


— 8 —

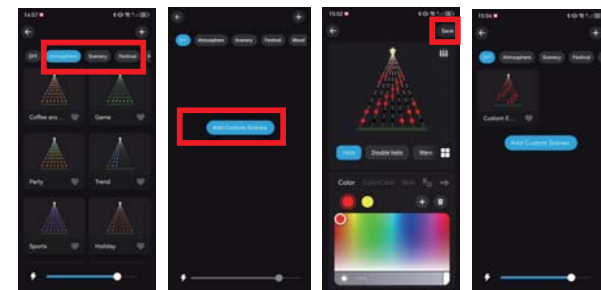
10.5x14.5cm-锥形灯英文说明书第5页

**IV.Detailed introduction of APP functions:****A) Multi color function**

The color of the light can be adjusted by the whole and each segment. App provides different columns for color selection or editing, and the brightness can also be adjusted. In the segmentation interface, users can freely smear or erase the color of each segment, and also set the gradient effect.

**B) Scene settings**

There are Four Build-in scenes: "Life", "Scenery", "Festivals", "Mood", and click "DIY" or "Collection" to create your favorite light effect.



— 5 —

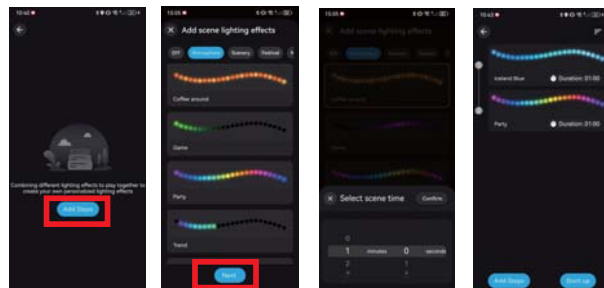
105 mm

105 mm

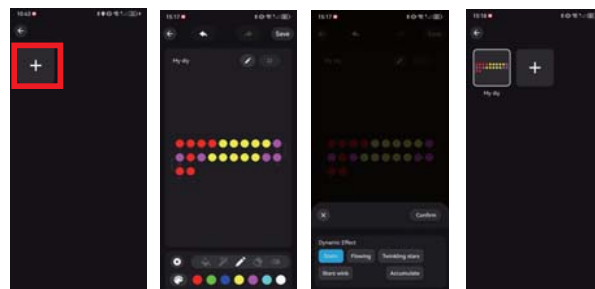
145 mm

**C) Playlist mode**

Multiple light dynamic modes built in, can set the time of lighting effects and enter cycle mode. Select different scene modes, then set the duration of each scene respectively, and play it by combining the sequence of different lighting effects.

**D) Smearfunction**

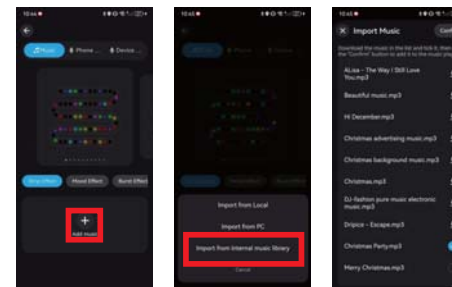
Click "+" to DIY the lighting color and dynamic effects then save it. Before DIY, please set the number of IC in "Settings" to ensure that the number of lights is consistent with the device. Otherwise, the lighting effect is incorrect. Before customize, please ensure that the IC number in app setting is the same as the light device, otherwise, the lighting effect will be incorrect.



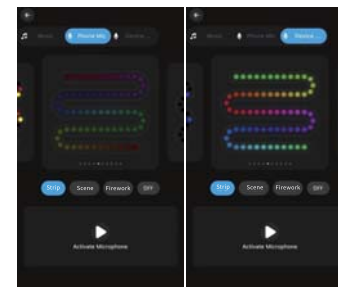
- 6 -

**E).Music Mode****1.Synchronization function of lighting and music rhythm.**

Click "Add Music" > Import a music file or import it from the built-in music library.

**2.MIC**

The lights color will change with the sound rhythm when your phone microphone catches the sound. The microphone sensitivity can be adjusted by the slider. There are two ways to input the audio signal on the controller, built in APP microphone and external microphone (For sound control version).



- 7 -

105 mm

105 mm