

Size : 90\*63 MM

## Temperature & Humidity Sensor

## Product Presentation:

## Specification

## How to use:

## Checklist before using the device:

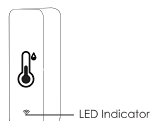
## How to set up:

3. Connect your mobile to your Wi-Fi router, open the back cover, remove the insulation sheet, click "+" at the upper right corner of homepage or click "Add Device".

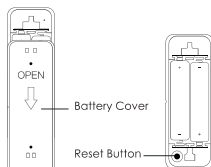
## USER MANUAL



Model: TH01



LED Indicator



Battery Cover

Reset Button

Size: 71\*25\*20mm

Battery: LR03-1.5V/AAA\*2 (Alkaline battery)

Wi-Fi Protocol: 2.4GHz

Wi-Fi Standard: IEEE 802.11 b/g/n

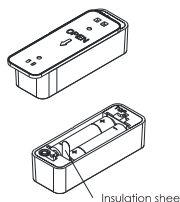
Temperature Measure Range: -20°C ~ 60°C

Temperature Accuracy: ±1°C

Humidity Measure Range: 0% RH~100% RH

Humidity Accuracy: ±5% RH

Slide to open the back cover of battery compartment, take out the insulation sheet.



Insulation sheet

(Notes: when batteries are run out, please choose Alkaline battery instead of Carbon-zinc battery.)

a. Your smartphone has connected to a 2.4GHz Wi-Fi network.

b. You have input the correct Wi-Fi password.

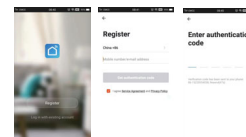
c. Your smartphone must be Android 4.4 + or iOS 8.0 +.

d. Your Wi-Fi router is MAC-open.

e. If the numbers of devices connected to Wi-Fi router reach the limit, you can try to disable a device to vacate the channel or try with another Wi-Fi router.

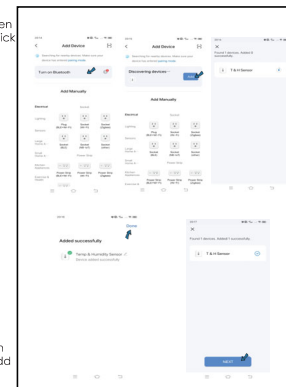


2. Create an account with your mobile number and authentication code.

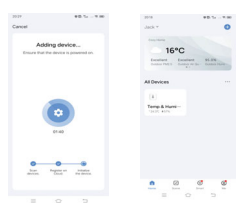


## 4. 1) Bluetooth Mode:

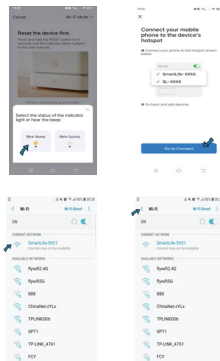
The app will advise you to turn on the bluetooth on your mobile, it will search the device and add automatically.



2) Wi-Fi Mode:  
Select "Temperature and Humidity Sensor (BLE+ Wi-Fi)" from "Sensors". Select "Blink Quickly", make sure the LED light is blinking quickly, if not, hold the reset button about 5s till indicator is blinking quickly



You can also select "Blink Slowly", make sure the LED indicator is blinking slowly, if not, hold the reset button for about 5s till the indicator is blinking slowly. Connect your mobile to the device's hotspot: "SmartLife-XXXX", then click to return to App interface, it will connect to Wi-Fi router automatically, configuration completed.



5. Use a clean and dry towel to clean the area where you want to mount the sensor. Peel off the adhesive tape to stick on the back of sensor, press it hard to fix it well.  
(The adhesive tape is for one-time use only.)



## NOTES:

- 1) The sensor is only used in indoor and not water-proof.
- 2) Please use Alkaline battery.
- 3) Please configure network connection instantly after the batteries are installed, to avoid power consumption.

## Functions

### 1. Accurate Measurement

About 30 minutes after wifi configuration, the temperature and humidity is closer to the actual ambient environment, so the readings are more accurate. And please keep the sensor away from any heat sources.

### 2. Intelligent Linkage

You can create linkage scene with other Tuya smart devices like Smart IR Remote Controller. For example, when the indoor temperature > 30°C, Air conditioner will turn on automatically, or when the humidity is < 20%, the humidifier will spray.

### 3. Temp & humidity Alert

You can preset the range of temperature and humidity in the "Scene", when the temperature and humidity reaches the range, it will push alert message via app.

### 4. Temperature Unit Switch

You can switch temperature unit between Celsius and Fahrenheit in the Set, select the temperature unit, then press the reset button once, the switch completed.

### 5. Temp and humidity records

You can view the historic data of temperature and humidity stored for 1 year, and export to your email address.

### 6. Third-party Voice Control

You can enquiry about temp and humidity via Amazon alexa, Google assistant smart speaker.

OK Google, what is the <device> humidity?

OK Google, what is the <device> temperature?

Alexa, what is the <device> humidity?

Alexa, what is the temperature of <device name>?

### 7. Remarks:

- 1) When the ambient temperature change > 0.5°C, or the humidity > 5%, the temp and humidity will be updated every 2 minutes.
- 2) When the ambient temperature change < 0.5°C or the humidity change < 5%, the temperature and humidity will be updated once an hour.
- 3) Since it is a low battery-powered device, if there is no information reported within 24 hours, the app will remind you that it is offline.

## FCC WARNING

This device complies with part 15 of the FCC Rules. Operation is subject to the following two conditions: (1) this device may not cause harmful interference, and (2) this device must accept any interference received, including interference that may cause undesired operation.

Any changes or modifications not expressly approved by the party responsible for compliance could void the user's authority to operate the equipment.

NOTE: This equipment has been tested and found to comply with the limits for a Class B digital device, pursuant to Part 15 of the FCC Rules. These limits are designed to provide reasonable protection against harmful interference in a residential installation. This equipment generates, uses and can radiate radio frequency energy and, if not installed and used in accordance with the instructions, may cause harmful interference to radio communications.

However, there is no guarantee that interference will not occur in a particular installation. If this equipment does cause harmful interference to radio or television reception,

which can be determined by turning the equipment off and on, the user is encouraged to try to correct the interference by one or more of the following measures:

- Reorient or relocate the receiving antenna.
- Increase the separation between the equipment and receiver.
- Connect the equipment into an outlet on a circuit different from that to which the receiver is connected.
- Consult the dealer or an experienced radio/TV technician for help.

To maintain compliance with FCC's RF Exposure guidelines, This equipment should be installed and operated with minimum 20cm distance between the radiator and your body. Use only the supplied antenna.