

QUICK START GUIDE

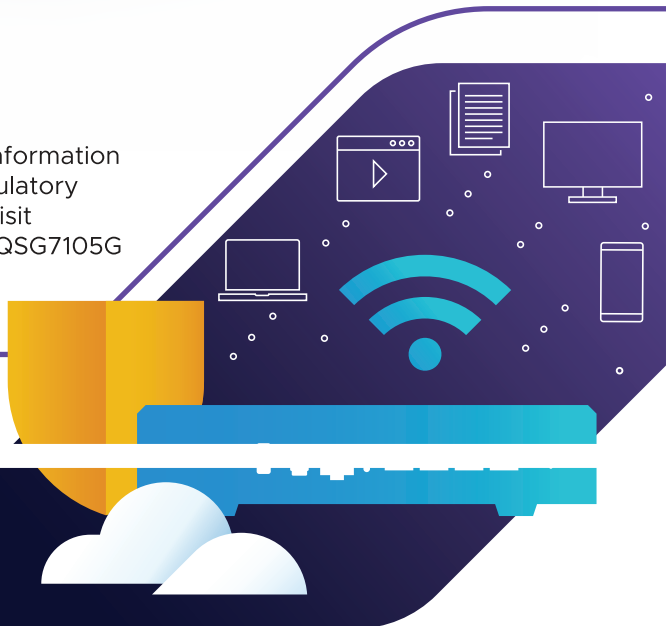
VMware VeloCloud® Edge 710-5G



Scan the QR code for more information including a Setup Video, Regulatory Safety Guides, and more or visit <https://brcm.tech/VeloCloudQSG7105G>

vmware®

by **Broadcom**

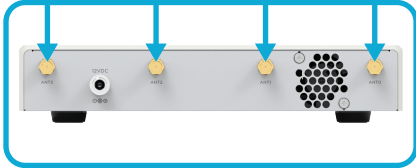


Get started with your VeloCloud Edge 710-5G

STEP 1

Attach antennas

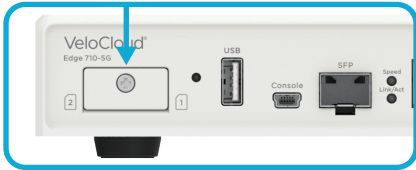
Hand-tighten the antennas into the back of your Edge device.



STEP 2

Insert SIM Card(s) (if applicable)

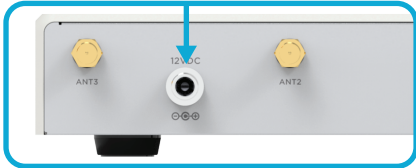
Loosen the fastener on the front cover to expose the SIM slots. Use push-tray and insert SIM Card(s) into slots.



STEP 3

Power up VeloCloud Edge

Hand-tighten the threaded power cord to secure into the back of your Edge device and then plug into a power outlet.

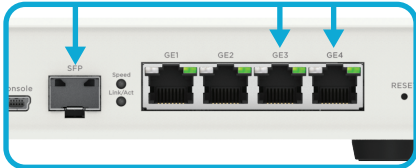


STEP 4

Connect to the Internet

Use the 5G/LTE, GE3, GE4 or SFP ports to connect to the Internet.

If you received an email from your administrator, now is the time to click the link in the email to complete the activation process.



STEP 5

Connect your devices

Connect your local devices to the Edge's Wi-Fi network or via the LAN ports (GE1 or GE2).

