

Instructions



PRESS THE BUTTON TO START,
AND IT WILL SHUT DOWN AFTER
HOLDING THE BUTTON FOR 2 SECONDS.



Use 1X 7.4V
Li-ion Batteries.
(INCLUDED)



(INCLUDED)



(INCLUDED)

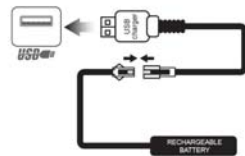
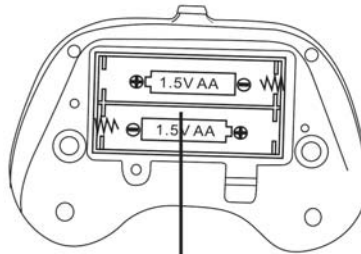
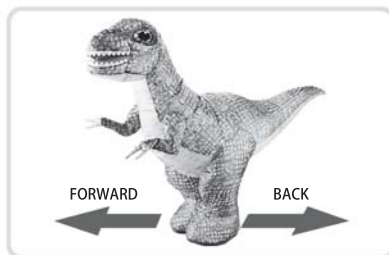


Figure 2

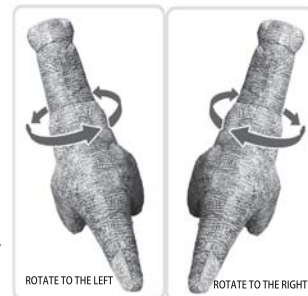


Use 2 "AA" BATTERIES
(NOT INCLUDED)



FORWARD

BACK

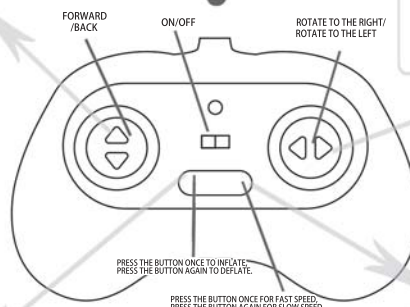


ROTATE TO THE LEFT

ROTATE TO THE RIGHT



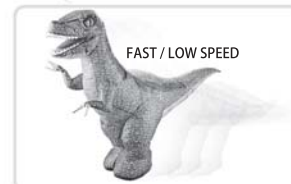
CHARGE AIR/
RELEASE AIR



REMOTE CONTROL
INFLATABLE DINOSAUR

PRESS THE BUTTON ONCE TO INFLATE.
PRESS THE BUTTON AGAIN TO DEFLATE.

PRESS THE BUTTON ONCE FOR FAST SPEED.
PRESS THE BUTTON AGAIN FOR SLOW SPEED.

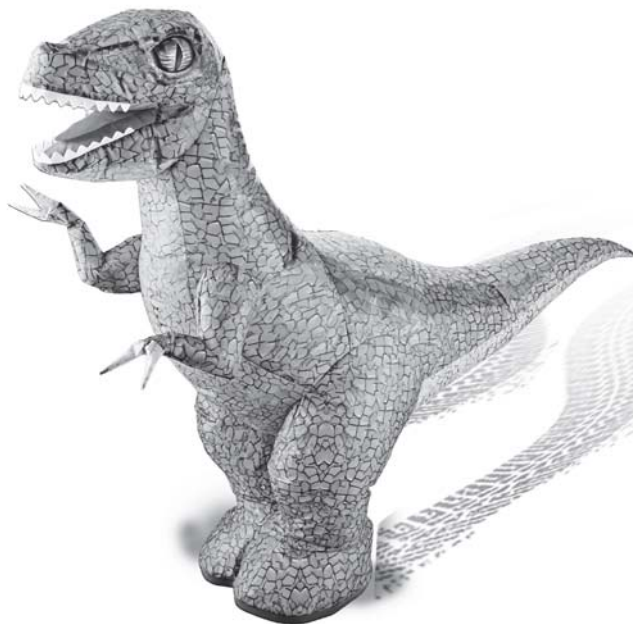


FAST / LOW SPEED

Instructions



REMOTE CONTROL INFLATABLE DINOSAUR



FCC STATEMENT:
 1. This device complies with Part 15 of the FCC Rules. Operation is subject to the following two conditions:
 (1) This device may not cause harmful interference, and
 (2) This device must accept any interference received, including interference that may cause undesired operation.
 2. Changes or modifications not expressly approved by the party responsible for compliance could void the user's authority to operate the equipment.

NOTE: This equipment has been tested and found to comply with the limits for a Class B digital device, pursuant to Part 15 of the FCC Rules. These limits are designed to provide reasonable protection against harmful interference in a residential installation. This equipment generates noise and can radiate radio frequency energy and, if not installed and used in accordance with the instructions, may cause harmful interference to radio communications. However, there is no guarantee that interference will not occur in a particular installation. If the equipment does cause harmful interference to radio or television reception, which can be determined by turning the equipment off and on, the user is encouraged to try to correct the interference by one or more of the following measures:
 - Reorient or relocate the receiving antenna.
 - Increase the separation between the equipment and receiver.
 - Connect the equipment into an outlet on a circuit different from that to which the receiver is connected.
 - Consult the dealer or an experienced radio/TV technician for help.

RF warning statement:
 The device has been evaluated to meet general RF exposure requirement. The device can be used in portable exposure condition without restriction.

WARNING! Not suitable for children under 6 years. Small Parts – Choking Hazard.
 Attention! Read instructions first before operation. "Instruction sheet and packaging must be retained since it contains important information"

Battery warnings:

1. Non-rechargeable batteries are not to be recharged.
2. Rechargeable batteries are only to be charged under adult supervision.
3. Different types of batteries or new and used batteries are not to be mixed.
4. Batteries are to be inserted with the correct polarity (+ and -).
5. Exhausted batteries are to be removed from the toy.
6. The supply terminals are not to be short-circuited.

FCC Requirement

changes or modifications not expressly approved by the party responsible for compliance could void the user's authority to operate the equipment.

This device complies with Part 15 of the FCC Rules. Operation is subject to the following two conditions:

- (1) this device may not cause harmful interference, and
- (2) this device must accept any interference received, including interference that may cause undesired operation.

Note: This equipment has been tested and found to comply with the limits for a Class B digital device, pursuant to Part 15 of the FCC Rules. These limits are designed to provide reasonable protection against harmful interference in a residential installation. This equipment generates, uses, and can radiate radio frequency energy, and if not installed and used in accordance with the instructions, may cause harmful interference to radio communications. However, there is no guarantee that interference will not occur in a particular installation. If this equipment does cause harmful interference to radio or television reception, which can be determined by turning the equipment off and on, the user is encouraged to try to correct the interference by one or more of the following measures:

- Reorient or relocate the receiving antenna.
- Increase the separation between the equipment and receiver.
- Connect the equipment into an outlet on a circuit different from that to which the receiver is connected.
- Consult the dealer or an experienced radio/TV technician for help.