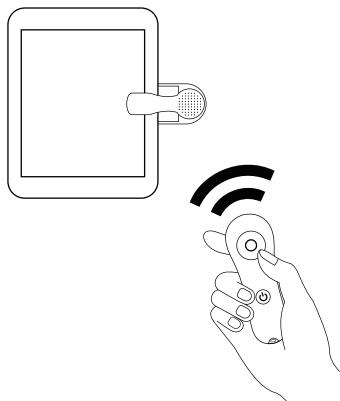


RF Remote Control Page Turner

User Guide

(PT01)



Product Description

Thank you for choosing this Page Turner. You will have a brand new reading experience!

With this RF Remote Control Page Turner, you can effortlessly turn Kindle pages forward with just a gentle click of the remote button, eliminating the need for constant manual page flipping.

Achieve comfortable reading by remotely flipping pages from the cozy warmth of your bed during cold winter days.

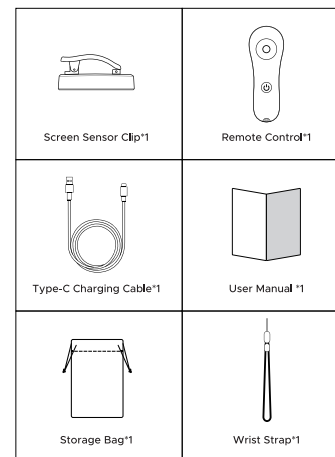
Once you've tried it, you'll surely fall in love with it.

No need for WiFi or Bluetooth connections. It's compatible with all capacitive touch screens like Kindle, Kobo, mobile phones, tablets, and more.

***If you have any questions, contact us via our support e-mail address on warranty card.**

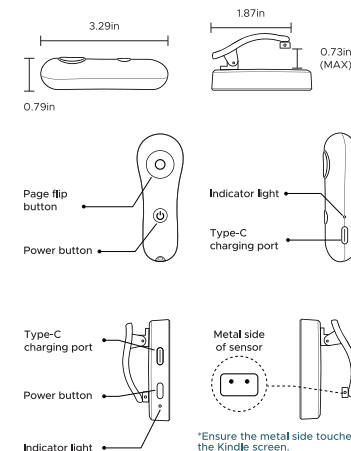
1

Package Included



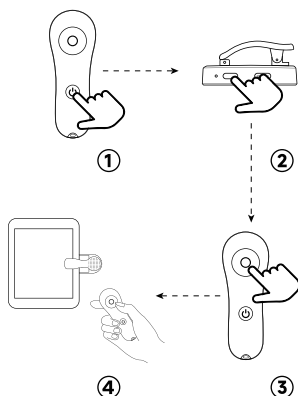
2

Product Diagram



3

How to Use



4

Step 1:

Press and hold the power button on the remote control. The green light will stay on and then turn off, indicating the remote control is on.

Step 2:

Press the power button of the clip, the indicator light will flash green slowly to indicate the clip is on; then press the button long again until the green light flashes rapidly.

Step 3:

Press and hold the page flip button on the remote control, and the indicator light will stop flashing, indicating successful pairing.

Step 4:

Clip the screen sensor clip on the Kindle in a suitable position. Press the page flip button on the remote control to turn the page normally.

***Please repeat the above steps for re-pairing before each use.**

5

FAQs

1.What should I do if it doesn't work?

- Ensure the metal tip of the screen sensor clip is clean and in contact with the Kindle screen.
- Ensure the RF remote control and the screen sensor clip are powered on.
- Confirm successful pairing. If the pairing is successful, press the page flip button on the remote control, and the receiver indicator will light up normally.
- Repair. Place the screen sensor clip in the appropriate position on the Kindle and repair it.
- Some older models of Kindle may not be compatible with the page turner. Please contact us.

2. What should I do if the screen sensor clip blocks the words?

- Adjust the position of the screen sensor clip.
- Adjust the margins of the Kindle screen.

3.What does the indicator light in different states mean?

- Low battery: The red light flashes slowly three times.
- Charging: The red light stays on continuously.
- Fully charged: The green light is on, and it goes off after unplugging.

4. How long does it take to get a full charge?

It'll take around 1.5 hours to top off the screen sensor clip, and about 3 hours for the remote control.

5. How long the page turner can be used when it is fully charged?

With a daily usage of 2 hours, the remote control can be used for about 150 days and the screen sensor clip can be used for about 15 days.

6.How long does it take for the page turner to turn off automatically?

If the page turner has not been used for 15 minutes, it will turn off automatically.

*Note: No manual shutdown button.

7

This equipment has been tested and found to comply with the limits for a Class B digital device, pursuant to part 15 of the FCC Rules. These limits are designed to provide reasonable protection against harmful interference in a residential installation. This equipment generates, uses and can radiate radio frequency energy and, if not installed and used in accordance with the instructions, may cause harmful interference to radio communications. However, there is no guarantee that interference will not occur in a particular installation. If this equipment does cause harmful interference to radio or television reception, which can be determined by turning the equipment off and on, the user is encouraged to try to correct the interference by one or more of the following measures:

- Reorient or relocate the receiving antenna.
- Increase the separation between the equipment and receiver.
- Connect the equipment into an outlet on a circuit different from that to which the receiver is connected.
- Consult the dealer or an experienced radio/TV technician for help.

Caution: Any changes or modifications to this device not explicitly approved by manufacturer could void your authority to operate this equipment.

This device complies with part 15 of the FCC Rules. Operation is subject to the following two conditions: (1) This device may not cause harmful interference, and (2) this device must accept any interference received, including interference that may cause undesired operation.

The device has been evaluated to meet general RF exposure requirement.