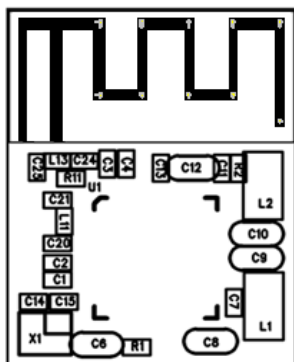


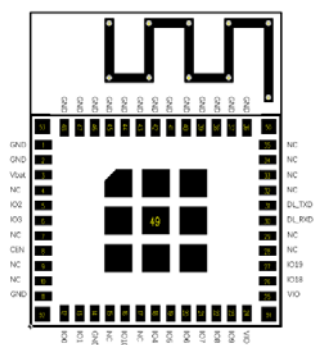
BK7236S-WIZ-MINI pcb 板载天线规格

一、天线尺寸规格:

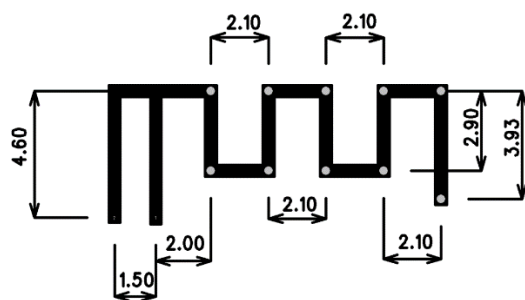
1, 天线 top 透视图:



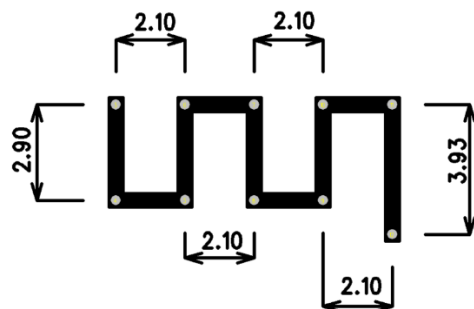
2, 天线 bottom 层透视图:



3, 天线体尺寸 (TOP 层部分, 单位=mm):



4, 天线体尺寸 (Bottom 层部分, 单位=mm):



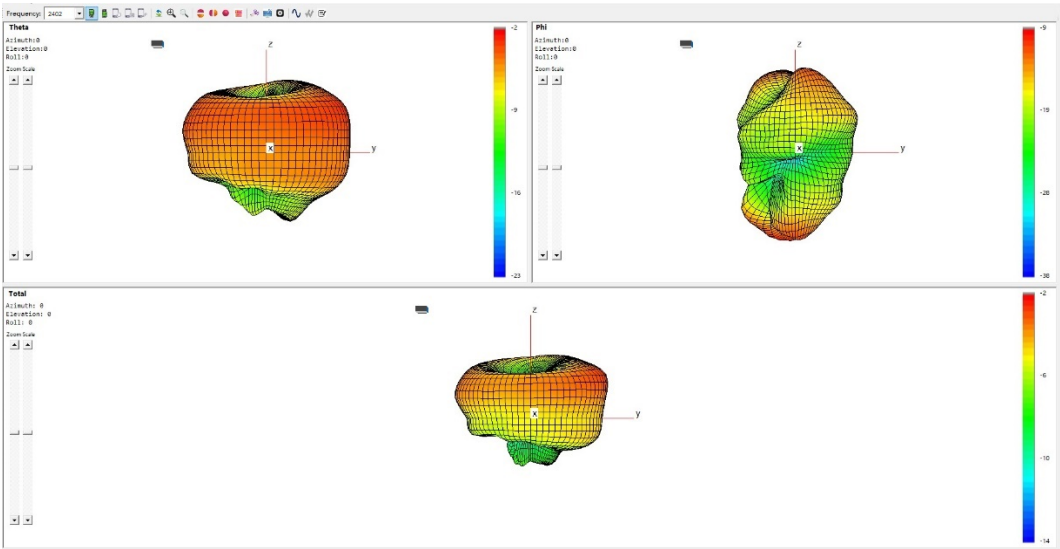
5, PCB 板厚:

Pcb 板厚（天线 top 到 bottom 层的过孔尺寸）=0.8mm
二，各 channel 平均增益和效率：

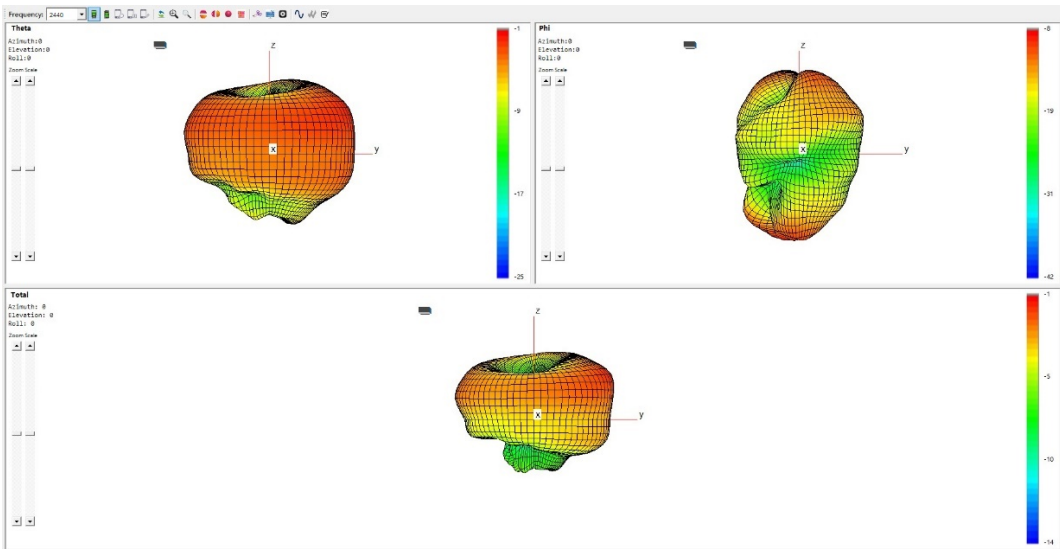
TestItem	Pas_Log		TestSyst...	Passive		StartTime	10:54:20	EndTime	10:59:11		TotalTime	00:04:51		CreateTL...	2024/9...		Polariza...	Linear						
Model	1					Equipm...		IMEI			Unit	dB		File Type	raw									
Memo				Product...	RayZon...		0 Polar	H																
chNo		Freq	TRP	PeakERP	MinERP	BoreSig...	BoreSig...	NHPRP ...	NHPRP ...	UHRP	LHRP	ERP_X	Polariza...	Theta_X	Phi_X	ThetaM...	PhiMax	PhiMin	Directiv...	Gain	Efficien...	Efficien...	UHEffici...	UHEffici...
1	2402	-5.3298...	-2.2192...	-13.490...	60	165	-7.7070...	-6.3327...	-7.1965...	-9.8969...	-2.2387...	Theta	60	165	-2.2387...	-9.3527...	-22.423...	-37.841...	3.11059...	-2.21	-5.3298...	29.3099...	-7.1965...	19.0699...
2	2440	-4.2057...	-1.2606...	-13.790...	60	165	-6.5577...	-5.2044...	-6.1256...	-8.6755...	-1.2716...	Theta	60	165	-1.2716...	-8.0105...	-24.842...	-41.611...	2.94514...	-1.26	-4.2057...	37.9683...	-6.1256...	24.4026...
3	2480	-3.6101...	-0.7124...	-14.096...	60	180	-5.9702...	-4.6052...	-5.5593...	-8.0276...	-0.7141...	Theta	60	180	-0.7141...	-7.2164...	-25.829...	-49.137...	2.89777...	-0.71	-3.6101...	43.5492...	-5.5593...	27.8010...

三，各方向辐射图：

1，channel=2402Mhz:



2，channel=2440Mhz:



3，channel=2480Mhz:

