

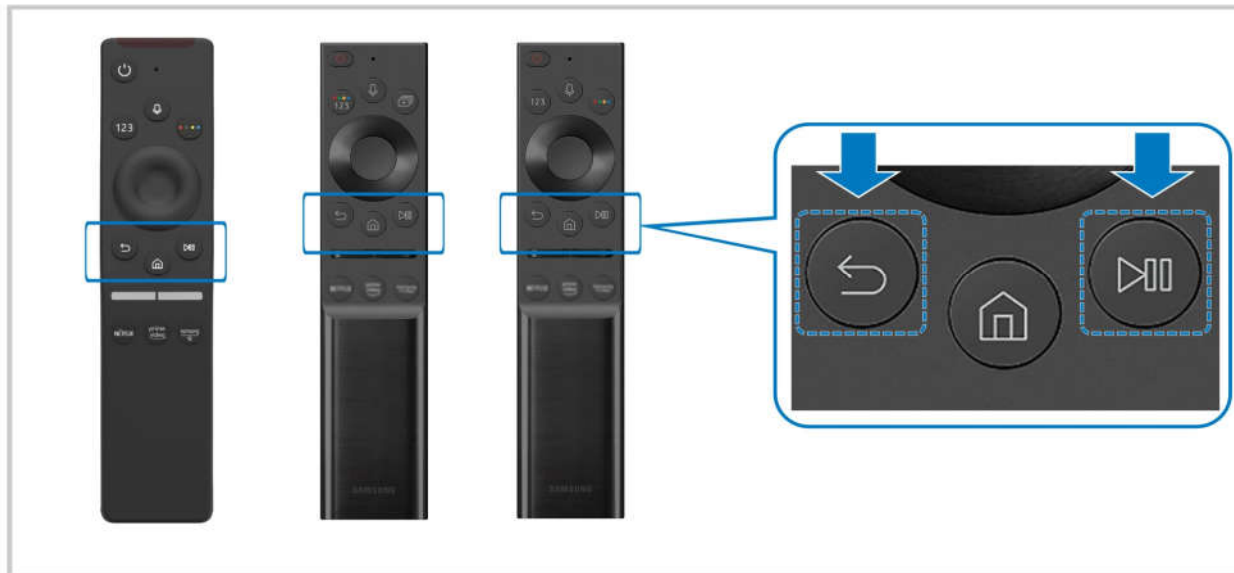


## Remote instruction for Samsung remote

### Connecting the Samsung Smart Remote to the TV

Connect the Samsung Smart Remote to your TV to operate the TV.

When you turn on the TV for the first time, the Samsung Smart Remote pairs to the TV automatically. If the Samsung Smart Remote does not pair to the TV automatically, point it at the front of the TV, and then press and hold the  and  buttons simultaneously for 3 seconds or more.




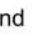





### Controlling External Devices with a Samsung Remote Control - Using the Universal Remote

Control the TV and connected external devices with a Samsung remote control.

 >  [Source](#) > [Universal Remote](#)

### Remote Control Issues

When the remote control isn't working, these steps may help resolve the problem.

The problem	Try this!
The remote control does not work.	<p>The connection between the remote control and the TV may be lost.</p> <p>Point the Samsung Smart Remote at the front of the TV, and then press and hold the  and  buttons simultaneously for 3 seconds or more.</p> <p> Pairing is not available in AU7/BEA series.</p> <p>Also, if the remote control does not work properly or its response is very slow, the battery might be low or dead.</p> <ul style="list-style-type: none"><li>• Charge the remote control by using the solar cell or the USB port(C-type) on the bottom.<ul style="list-style-type: none"><li>– You can check remaining battery of Samsung Smart Remote with solar cell in  &gt;  <a href="#">Settings</a> &gt; <a href="#">General</a> &gt; <a href="#">Power and Energy Saving</a> &gt; <a href="#">Available Remote Battery</a>.</li></ul></li><li>• If the remote control has batteries, replace them with new ones.</li></ul>
External devices cannot be operated with the TV remote control.	<p>Check the cable connection between the TV and external devices.</p> <p>When the symptom persists, set it manually in  &gt;  <a href="#">Source</a> &gt; <a href="#">Universal Remote</a>.</p>

**FCC Caution:** Any changes or modifications not expressly approved by the party responsible for compliance could void the user's authority to operate this equipment.

This device complies with Part 15 of the FCC Rules. Operation is subject to the following two conditions:

- (1) This device may not cause harmful interference, and
- (2) this device must accept any interference received, including interference that may cause undesired operation.

**NOTE:**

This equipment has been tested and found to comply with the limits for a Class B digital device, pursuant to Part 15 of the FCC Rules.

These limits are designed to provide reasonable protection against harmful interference in a residential installation. This equipment generates, uses and can radiate radio frequency energy and, if not installed and used in accordance with the instructions, may cause harmful interference to radio communications.

However, there is no guarantee that interference will not occur in a particular installation.

If this equipment does cause harmful interference to radio or television reception, which can be determined by turning the equipment off and on, the user is encouraged to try to correct the interference by one or more of the following measures:

- Reorient or relocate the receiving antenna.
- Increase the separation between the equipment and receiver.
- Connect the equipment into an outlet on a circuit different from that to which the receiver is connected.
- Consult the dealer or an experienced radio/TV technician for help.

**FCC Radiation Exposure Statement:**

The equipment complies with FCC Radiation exposure limit set forth for uncontrolled environment. The device shall be operated and installed without restriction.