



SMART PILLOW

User manual

CONTENTS

- 1 What's in the Box
- 2 How It Works & Key Features
- 3 Hardware Overview
- 4 Download the APP
- 5 Setup & Usage
- 6 Questions and Answers
- 7 Technical Specifications
- 8 Notes
- 9 Warranty Information

WHAT'S IN THE BOX

- X1** Pillow and air pump box
- X1** Side arm circumference soft ruler
- X1** Type-C Charging Cable
- X1** User manual

HOW IT WORKS & KEY FEATURES

PRINCIPLE

The device inflates the internal airbags of the pillow to adjust its height upon detecting snoring, which turns the head to widen the airway and achieve the function of stopping snoring

FEATURES

Snoring Recognition and Learning:

The smart pillow is equipped with an algorithm that accurately captures snoring sounds and self-learns to adapt to the user, enhancing the precision of detection

Pressure Sensing Technology:

The pillow uses a head pressure sensor to precisely locate the head, providing essential data for effective snoring mitigation.

Sleep Posture Recognition and Adaptation:

The smart pillow recognizes sleep posture through algorithms and automatically adjusts to protect the cervical spine and maintain an unobstructed airway.

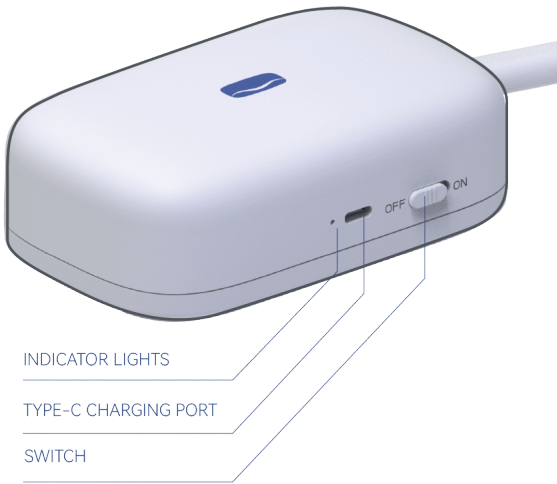
Material and Design:

The pillow is made of memory foam with slow rebound and a cervical spine curve design, offering a breathable and comfortable experience.

APP Integration:

Users can customize settings through the APP, monitor sleep data, and achieve personalized sleep management.

HARDWARE OVERVIEW



INDICATOR LIGHTS

Power and charging indicator lights, when charging or when the power is on, different light states will be displayed

Power status light		Green Light	Power on status
		Lights out	Power off state
Battery status light		Green Light	Normal power
		Red light	Power off - Charging
		Red light	Power on - Charging
		Green Light	Power on - full charge
		Lights out	Power off - Charging
		Lights out	Low battery

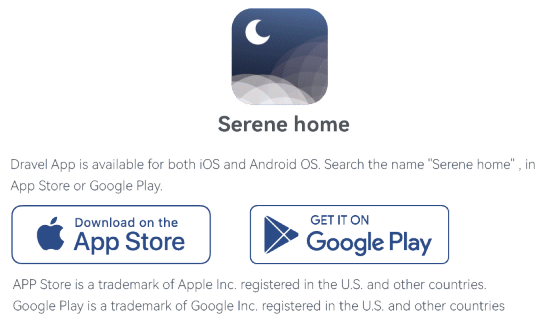
TYPE-C CHARGING PORT

When the battery is too low, you can charge it by plugging in a type-c charging cable

SWITCH

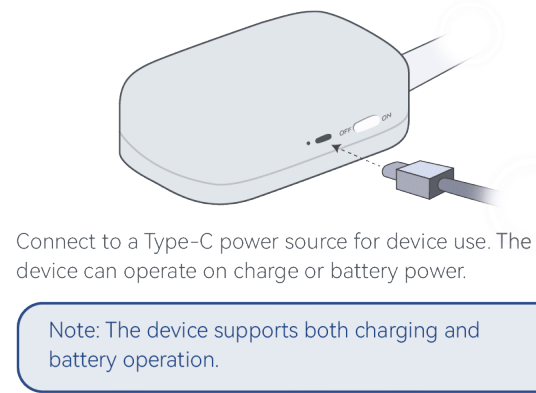
Power switch, flip to the left to turn off the power, flip to the right to turn on the power

DOWNLOAD THE APP

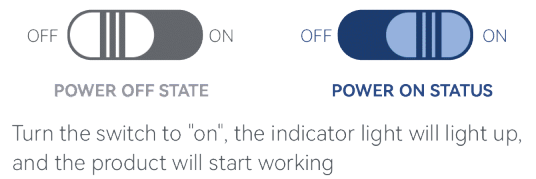


SETUP & USAGE

step1 Power Source Connection



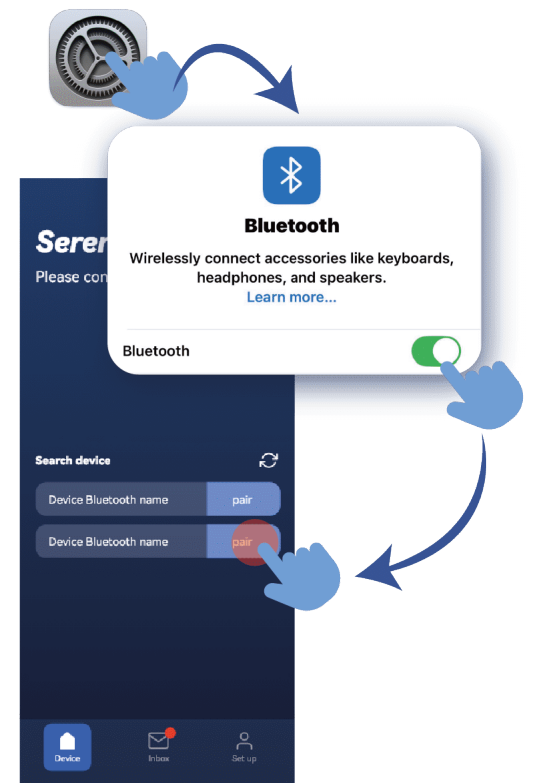
step2 Power on



step3 Air pump box placement

It is recommended to place the air pump box on the ground or on the table

step4 Device Connection



Turn on Bluetooth in your phone settings, launch the 'SERENE' app, search for and connect to the pillow device. Upon successful connection, the operation interface will be displayed.



WARRANTY INFORMATION

Your Dravel product is protected by 1 year warranty from the purchase date. For more information on repairs, exchanges, and other policies, please contact us.

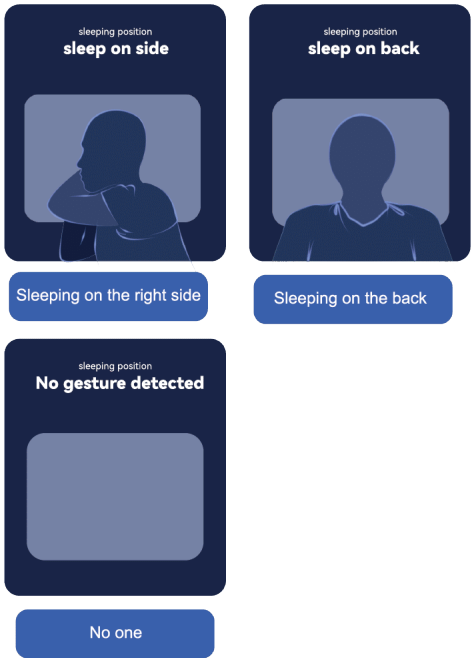
Please send all inquiries through the Contact Form on our website or contact us through the app. Our professional technicians are committed to replying to all your requests within 24 hours. They would be glad to assist you.



WWW.DRAVELLIFE.COM

step5 Sleep Position Detection

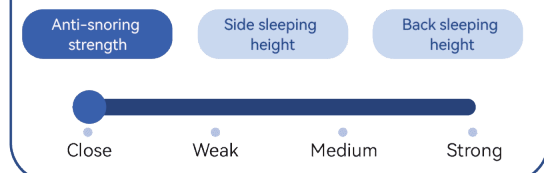
Lie down flat or on your side on the pillow, the app will display your sleeping position.



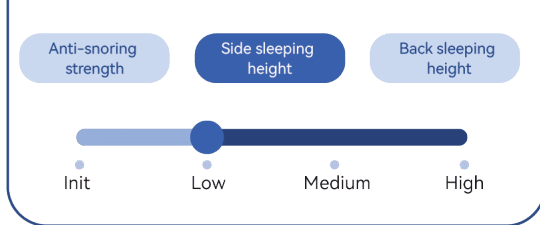
step6 Set pillow related parameters

Set relevant parameters according to your physical condition

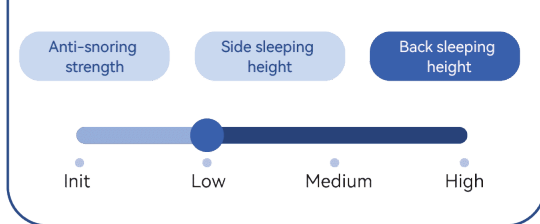
SET THE INTENSITY OF THE ANTI-SNORING



SET THE SIDE SLEEPING HEIGHT

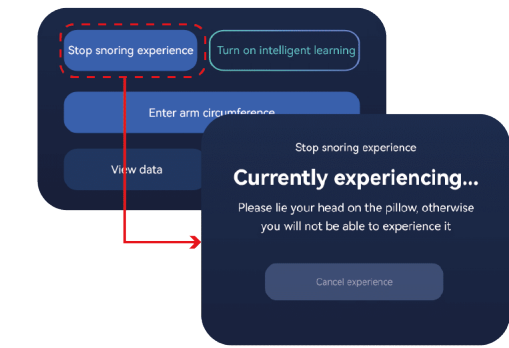


SET THE BACK SLEEP HEIGHT



step7 Anti-snoring Experience

Set the anti-snoring intensity, experience the anti-snoring function, and adjust the intensity to a more suitable level.



step8 Data Viewing

On the display interface, you can view sleep data, including sleep duration and snoring duration.



QUESTIONS AND ANSWERS

Q What should I do if the indicator light does not light up when the switch is turned to "on"?

A Connect the charger to charge

Q What should I do if the APP cannot search for the device?

A Restart the device and search for the device again

Q Can this product be used as a treatment?

A This product is an anti-snoring product. Continuous use can effectively reduce snoring symptoms, but it cannot be recommended as a treatment.

TECHNICAL SPECIFICATIONS

Pillow parameters

- Product name: Smart Pillow
- Product model: Peace One
- Pillow core material: Memory Foam
- Size: 24.5in x 17.2in x 3.7in
- Weight: 8.28Lb
- Battery Type: 18650 Lithium Battery

Capacity: 5000mAh
Input: 5V/1A
Battery life: Standby ≈ 8 days Operation time ≈ 2 days
FCC ID: 2BKIBP01
Fabric parameters
Coat: Cool-feeling medium molecular air layer fabric (50% medium molecular, 50% polyester fiber)
Front lycra: 75% nylon, 25% spandex
Inner sleeve: 100% polyester fiber
Core: 100% memory foam

NOTES



FCC WARNING WORDS

This device complies with part 15 of the FCC Rules. Operation is subject to the following two conditions: (1) This device may not cause harmful interference, and (2) this device must accept any interference received, including interference that may cause undesired operation.

Any changes or modifications not expressly approved by the party responsible for compliance could void the user's authority to operate the equipment.

This equipment has been tested and found to comply with the limits for a Class B digital device, pursuant to part 15 of the FCC Rules. These limits are designed to provide reasonable protection against harmful interference in a residential installation. This equipment generates, uses and can radiate radio frequency energy and, if not installed and used in accordance with the instructions, may cause harmful interference to radio communications. However, there is no guarantee that interference will not occur in a particular installation. If this equipment does cause harmful interference to radio or television reception, which can be determined by turning the equipment off and on, the user is encouraged to try to correct the interference by one or more of the following measures:
—Reorient or relocate the receiving antenna.
—Increase the separation between the equipment and receiver.
—Connect the equipment into an outlet on a circuit different from that to which the receiver is connected.
—Consult the dealer or an experienced radio/TV technician for help.

FCC Radiation Exposure Statement

This equipment complies with FCC radiation exposure limits set forth for an uncontrolled environment . This transmitter must not be co-located or operating in conjunction with any other antenna or transmitter.