

User Manual

SECU365 Smart Lock SFL1

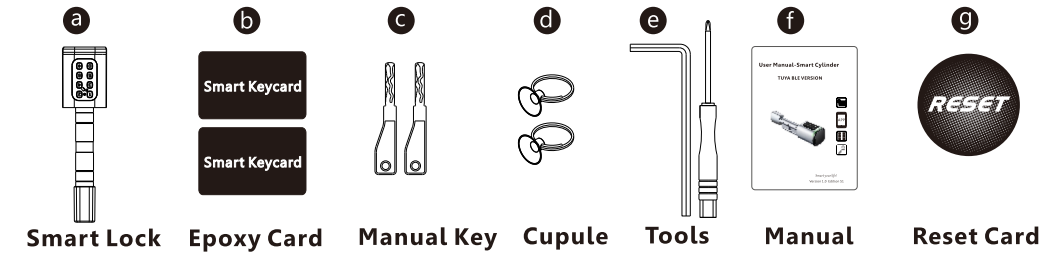


Smart your life!

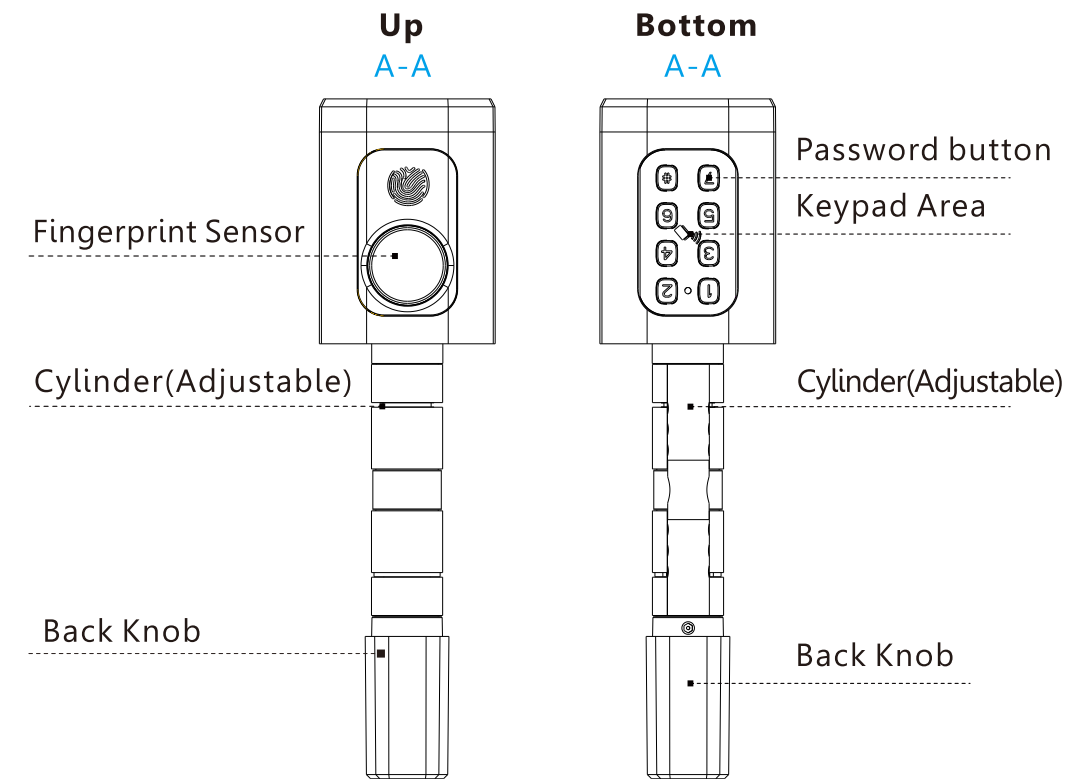
Version 1.0 Edition V1

1 Packing Accessories

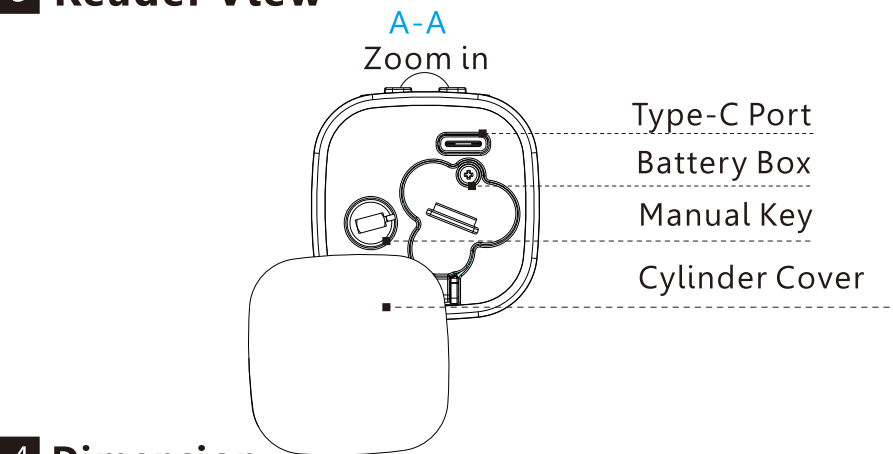
Please check the packing box and accessories when you got the item in hand.



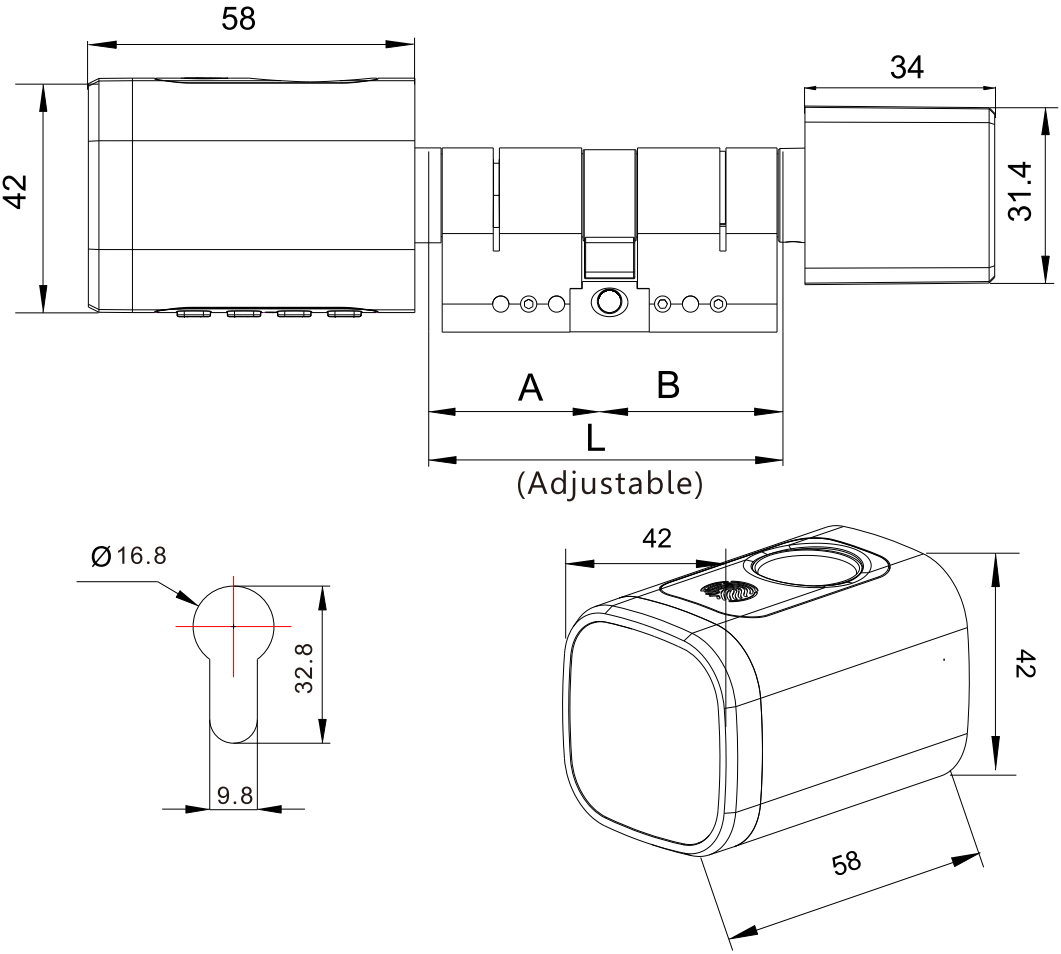
2 Product Specification



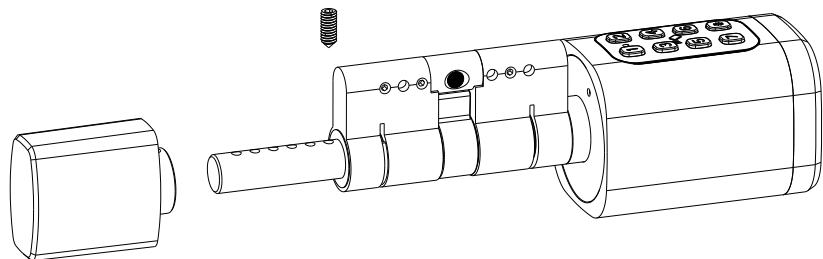
3 Reader View



4 Dimension

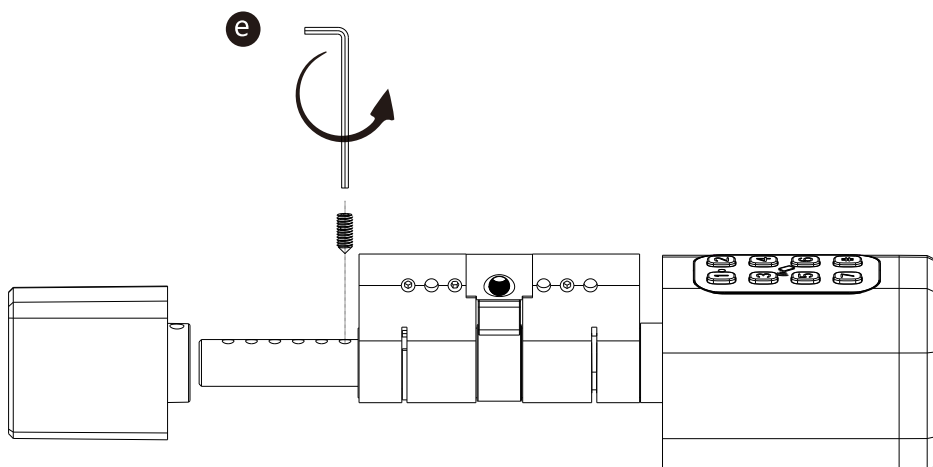


5 ACCESSORIES INSTALLATION



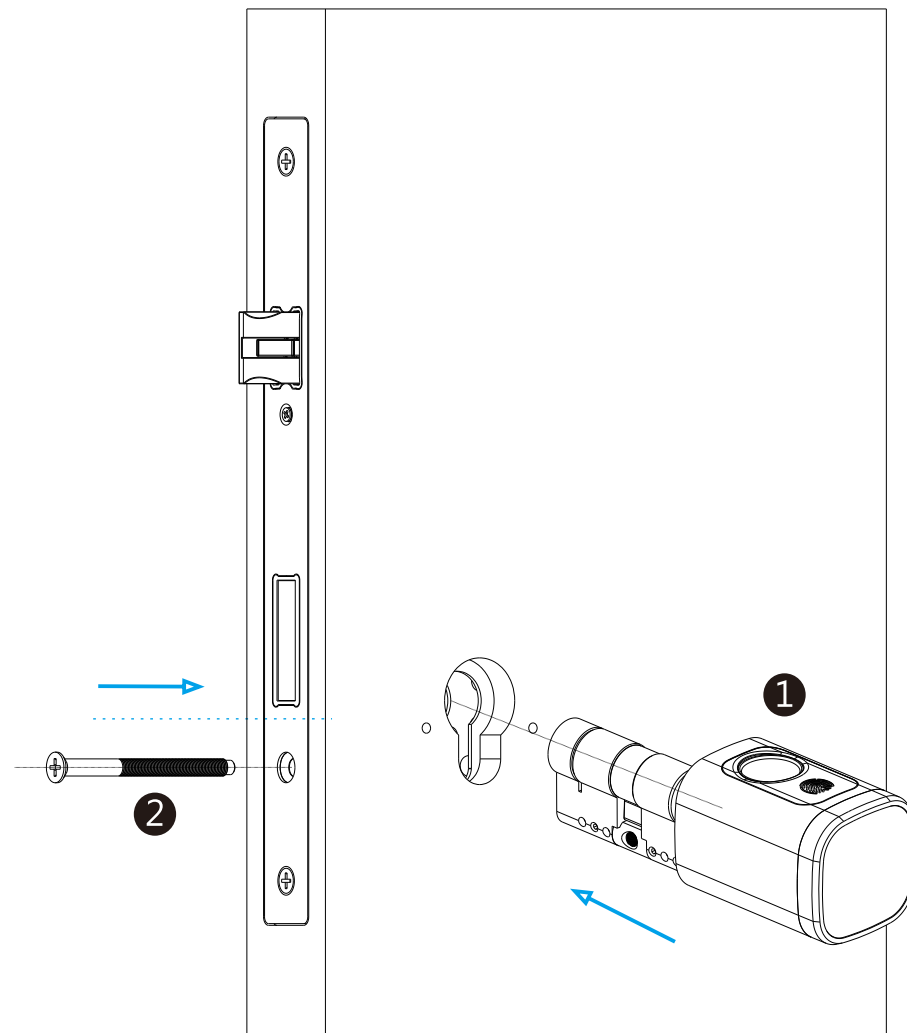
6 INSTALLATION STEPS

6.1 Please use the screw driver to take off the screw on the back knob position, refer the below Pic.1:



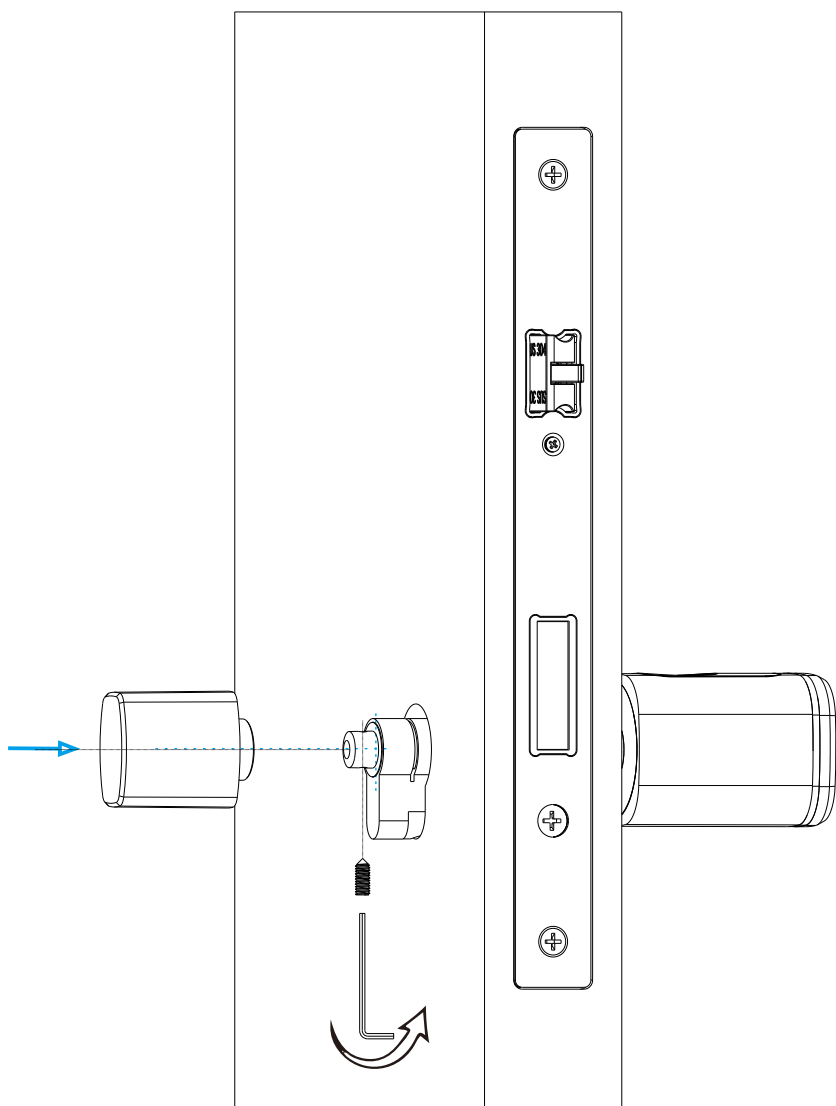
Pic.1

6.2 Please insert the cylinder to the existed lock and fix the cylinder with the long screw as picture 2.



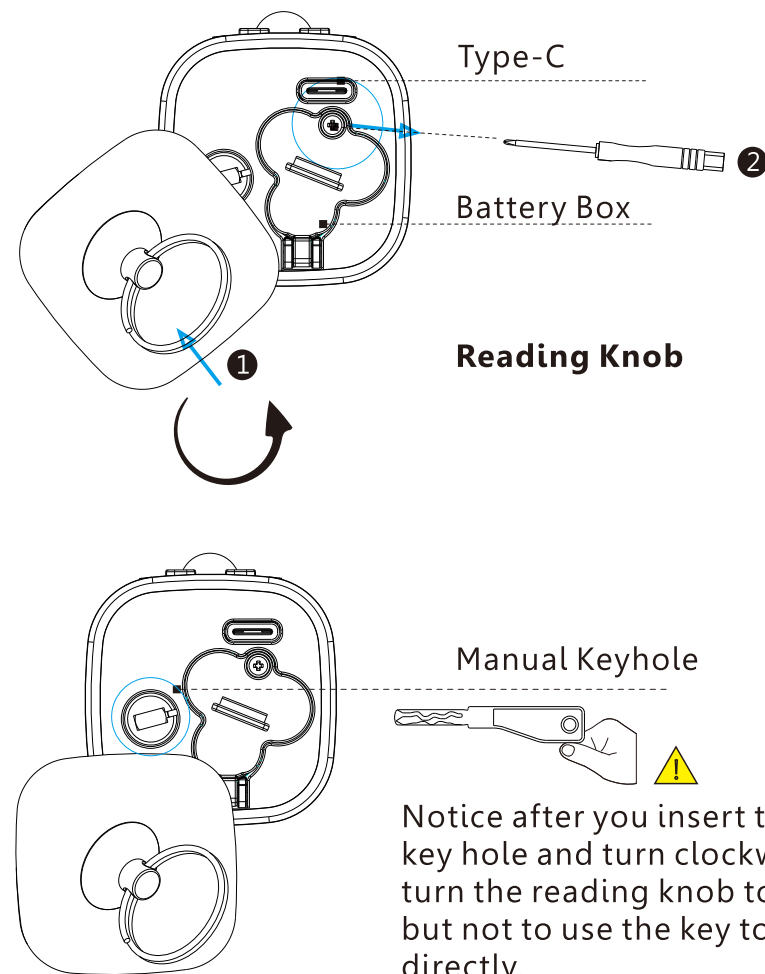
Pic.2

6.3 Please use the screw driver to fasten the screw on the back knob position, refer the below picture 3:



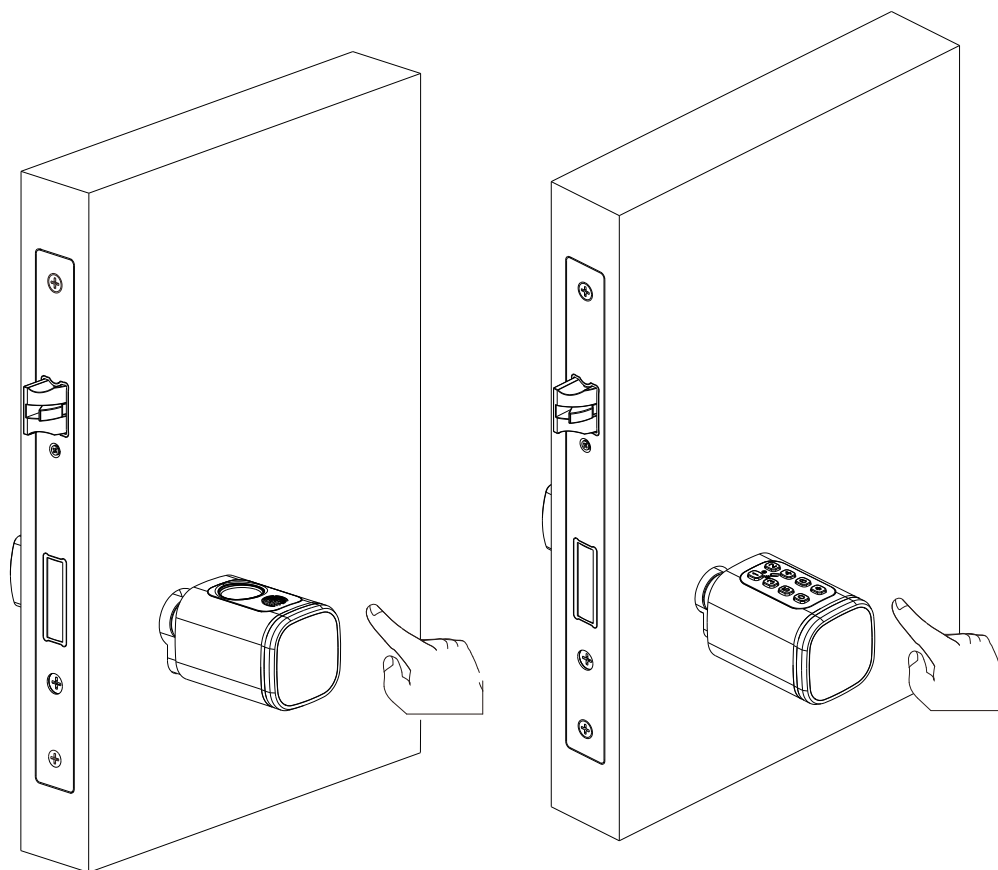
Pic.3

6.4 Please take off the reading knob cover with the magnet or sucker (included in our accessories bag), assemble 3xAAA battery, refer the below picture 4:



Pic.4

6.5 Please test with your fingerprint/password under the factory state, any fingerprint/password 123456# will unlock the door lock, refer to below picture 5:

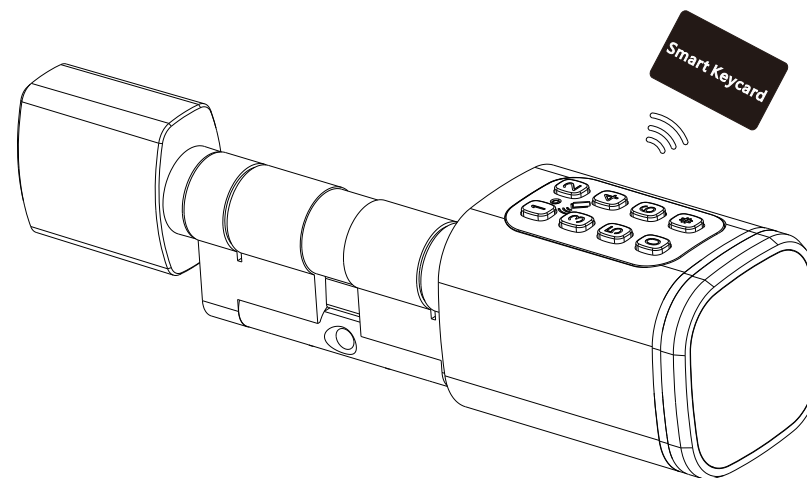


Fingerprint settings

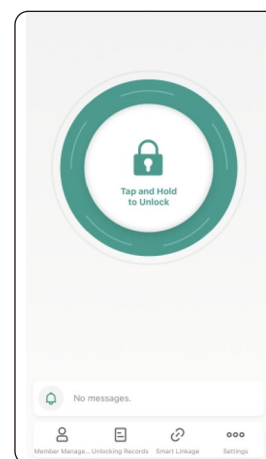
Password settings

Pic.5

6.6 Please test the lock with key card after you configure the lock with Tuya smart APP(Refer to Part 6).



Notice the keycard or fingerprint can only be enrolled by the Tuya smart APP, so it is important to install this app in your mobile before starting daily use.

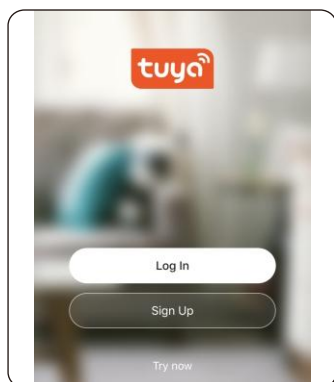


7.Tuya APP Settings

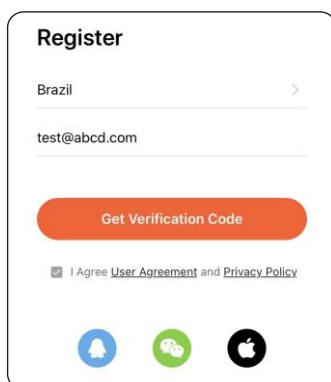
Please download the Tuya smart or Smart life on Apple store or Google play. also you can scan the QR code below to download the APP directly.



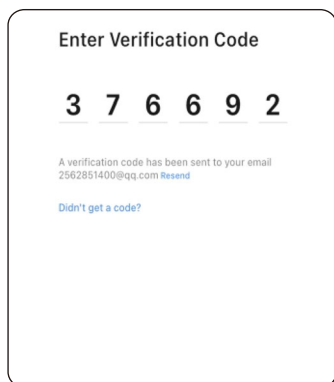
7.1 Please register one account with your E-mail or mobile number.



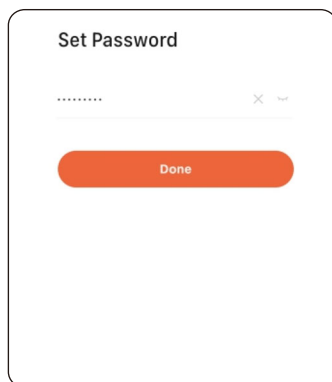
7.1.1 Sign Up



7.1.2 Enter mobile or mail
Get Verification Code



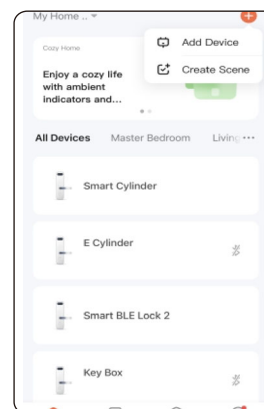
7.1.3 Enter the code sent
to your mail or mobile



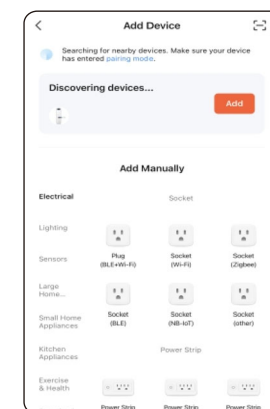
7.1.4 Set password and login

7.2 Intelligent Configuration

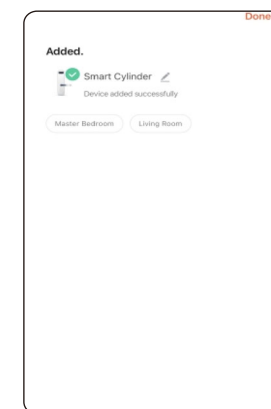
Please run Tuya smart APP and click "Add Device" on the top right position and meanwhile awake the lock cylinder, The phone will auto search the lock cylinder as below Step 2:



Step 1
Add Device



Step 2
Activate the lock Click "Add"



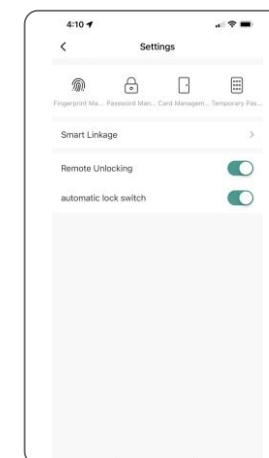
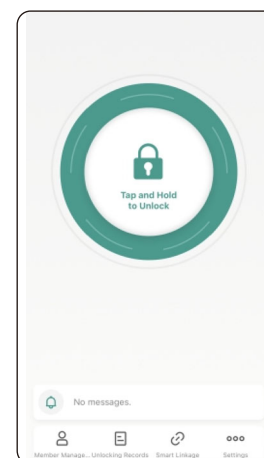
Step 3
Done



Note that You can also click menu "Camera & Lock" to find "Lock (BLE)" to add the lock cylinder.

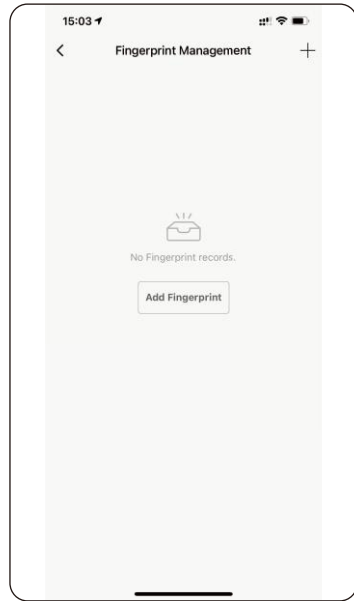
7.3 Function Description

Under Tuya smart APP interface, you can see the features for the smart locks, such as Member /unlock records and settings etc.

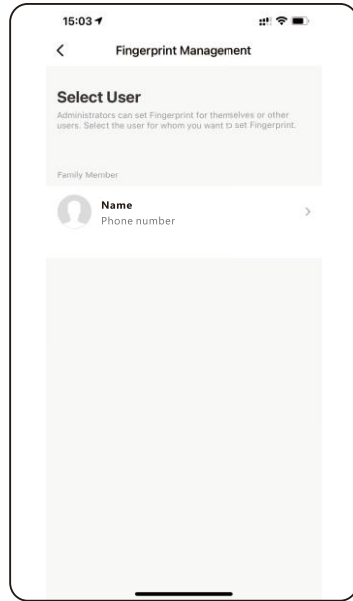


7.4 Add User Fingerprint

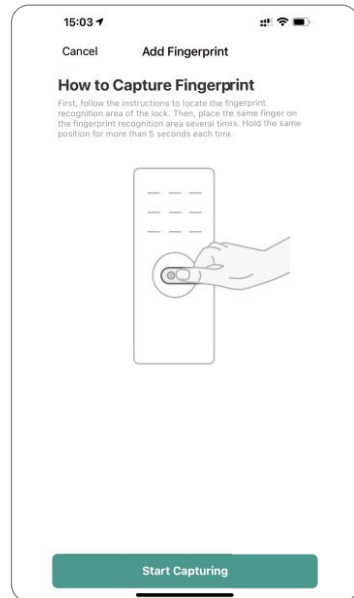
Under Tuya smart App setting, you can click the fingerprint management and add the fingerprint.



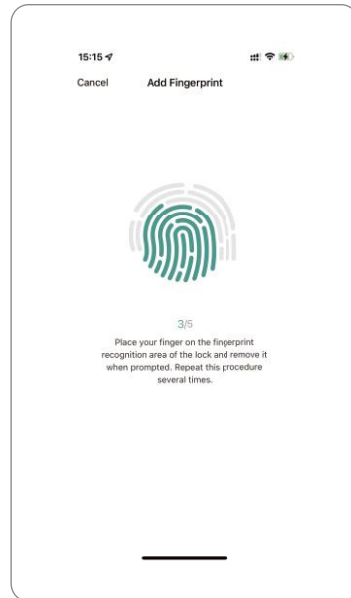
Step1:
Click Add Fingerprint



Step2 Select User



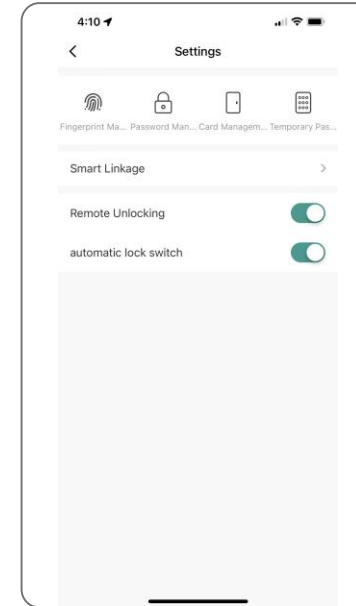
Step3:
Start Capturing



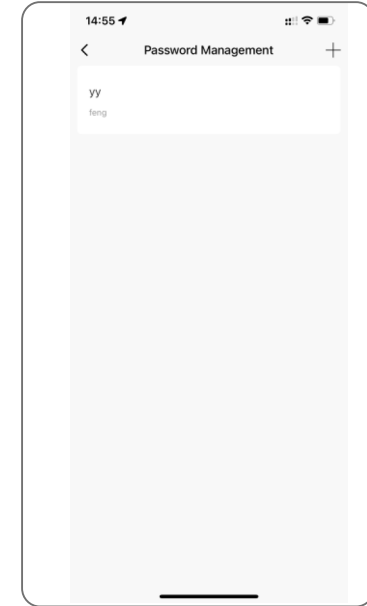
Step 4:
5 Times and done
11

7.5 Add User Password

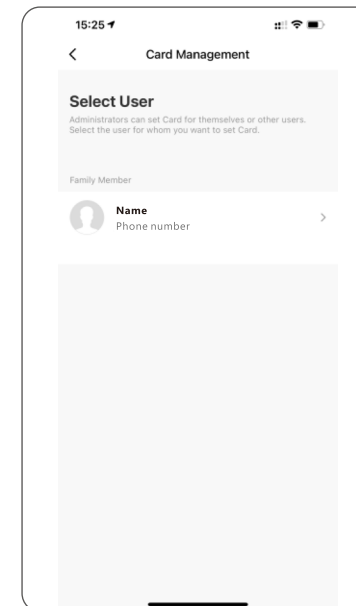
Under Tuya smart APP setting, you can click the password management and create the password.



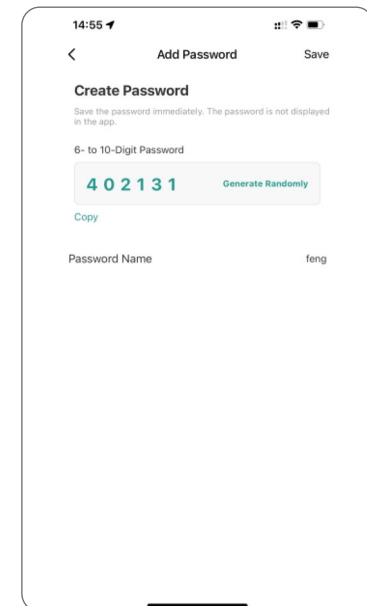
Step1:
Click Password Management



Step2 Click "+"



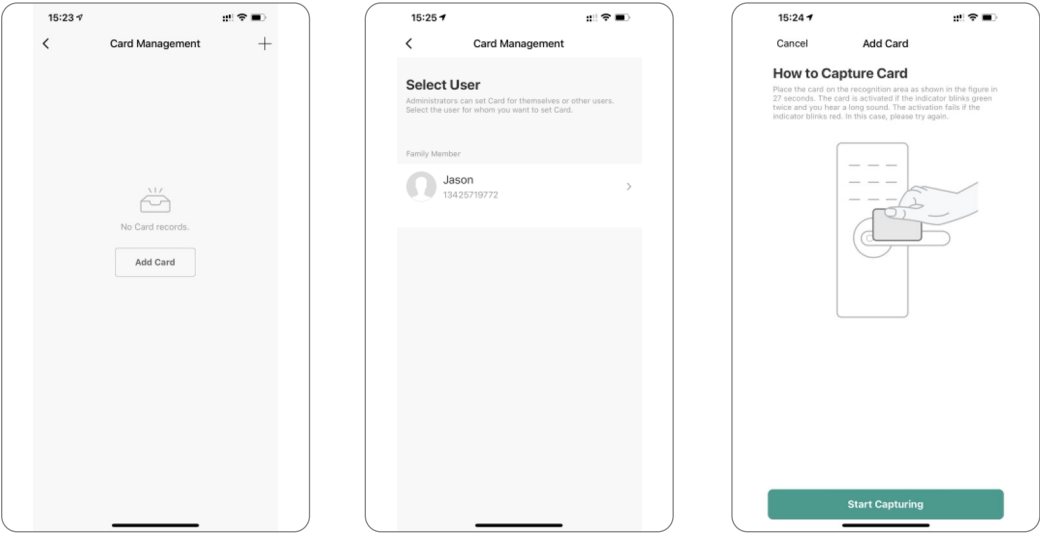
Step3:
Select User



Step 4:
Generate Randomly
12

7.6 Add User Card

Under Tuya smart APP setting, please click the Card Management and issue the card.



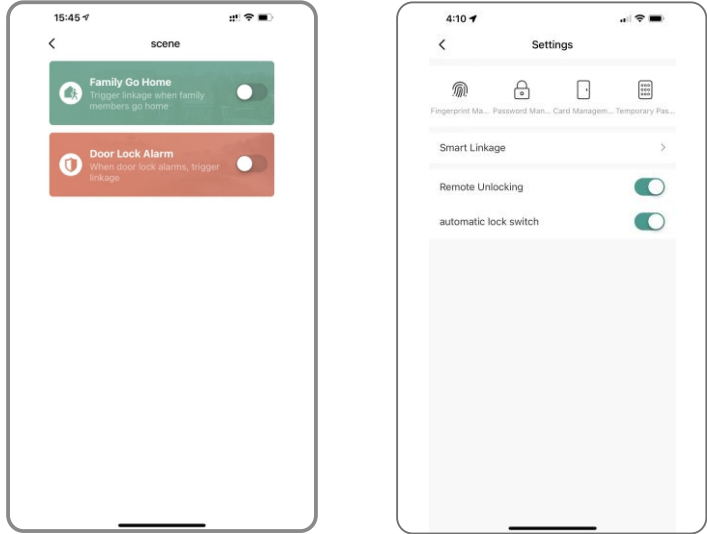
Step1:
Click Add Card

Step2:
Select User

Step3:
Tap Card on the lock
induction area

7.7 Smart Linkage and Settings

Under the settings, you can click the smart linkage for more scene and more options for the features upon the using condition.

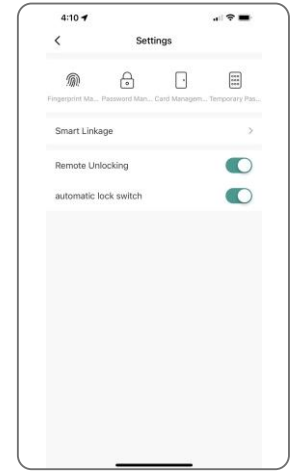


Step3:
Select User

Step 4:
Generate Randomly
13

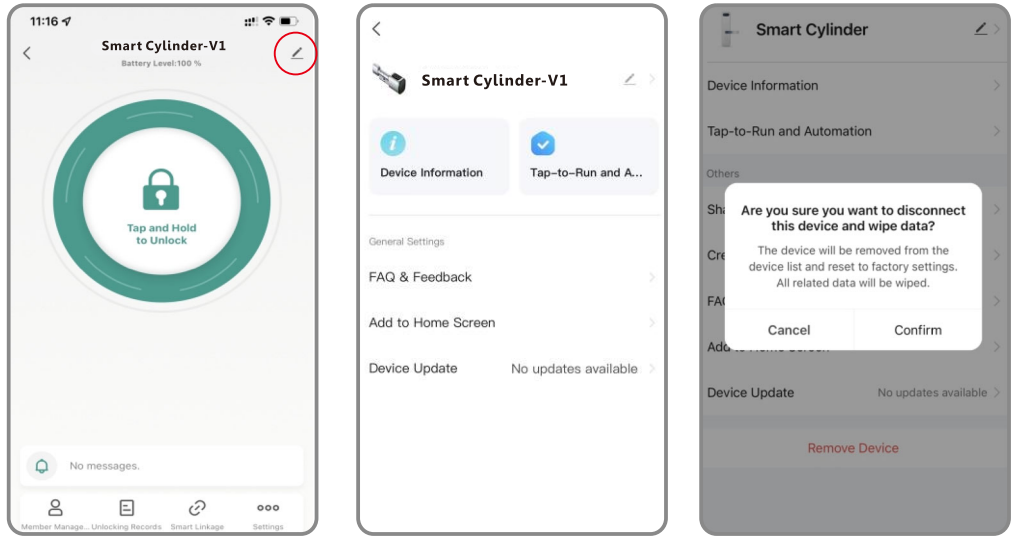
7.8 Passage Mode

Under Tuya smart APP setting, you can turn off "automatic lock switch" to get the lock cylinder under passage mode. Under passage mode you can unlock the lock cylinder by turning the knob without inputting any registered information. You can input any registered information to cancel the "Passage Mode".



8. Reset the Lock

Click top right as step 1 then click "Remove Device" to reset the lock by the following steps as below. The lock will be set to factory state under which any fingerprint or password (123456#) can unlock the lock cylinder.

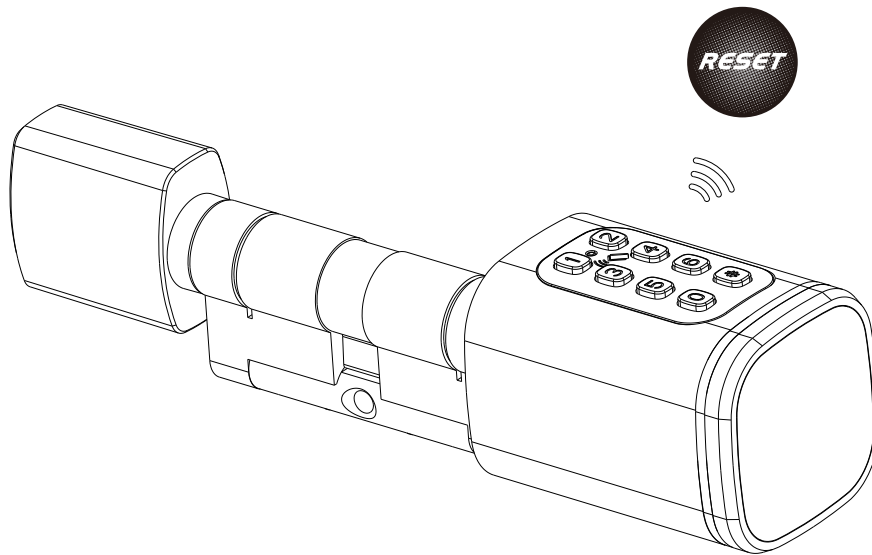


9. Reset Card

By swiping the reset card you can easily make the lock cylinder to be under factory status again. You can reconnect it with new user. It is highly recommended that the reset card is used only when you lose the top admin information or when the lock cylinder is mistakenly configured by other user.

9.1 Setting Steps:

Swipe the Reset Card to the induction area and there will be one long beep sound indicating the lock cylinder is successfully reset.



10. Sales and Service Terms

- Please read the manual carefully before use!
- Limited 1-year Electronic Warranty Limited Lifetime Mechanical and Finish Warranty.
- We offer a 1-year Limited Warranty on Electronic Parts and a limit lifetime for mechanical and finish defect warranty for this V1 smart cylinder under proper use for residential user. Proof of purchase and ownership is required to ensure that the lock cylinder is under effective warranty.
- Any error or question in our manual or sales term, please feel free to contact with us.
- We are free from any responsibility for any wrong operation or improper installation damage.
- We are not responsible for any damage caused by anthropic factor or inevitable reason and will not pay for the loss or maintain for free. Please check carefully our aftersale service terms.
- Please do not take apart the lock if you are not a technician in lock field. Or if it is a must, do it under the guidance of the technician.
- Notice: there might be tiny difference between the pictures for advertising and real product. Please note that real product shall prevail.

FCC warning statements:

This equipment has been tested and found to comply with the limits for a Class B digital device, pursuant to part 15 of the FCC Rules. These limits are designed to provide reasonable protection against harmful interference in a residential installation. This equipment generates, uses and can radiate radio frequency energy and, if not installed and used in accordance with the instructions, may cause harmful interference to radio communications. However, there is no guarantee that interference will not occur in a particular installation. If this equipment does cause harmful interference to radio or television reception, which can be determined by turning the equipment off and on, the user is encouraged to try to correct the interference by one or more of the following measures:

- Reorient or relocate the receiving antenna.
- Increase the separation between the equipment and receiver.
- Connect the equipment into an outlet on a circuit different from that to which the receiver is connected.
- Consult the dealer or an experienced radio/TV technician for help.

Caution: Any changes or modifications to this device not explicitly approved by manufacturer could void your authority to operate this equipment.

This device complies with part 15 of the FCC Rules. Operation is subject to the following two conditions: (1) This device may not cause harmful interference, and (2) this device must accept any interference received, including interference that may cause undesired operation.

The device has been evaluated to meet general RF exposure requirement.