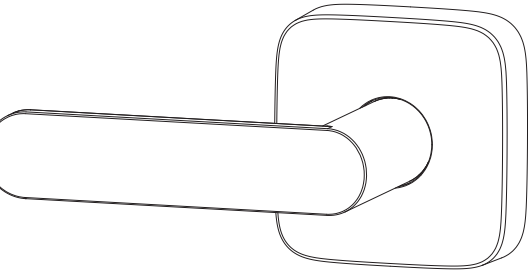
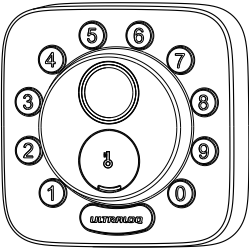









ULTRALOC

Bolt

Installation and User Guide
(v1.0)



Important Notes

-  Install and test the lock with the door open to avoid being locked out.
-  Please read and follow the instructions carefully before contacting customer support.
-  Before returning the lock, please remove the device from the app settings and contact customer support.
-  Operating temperature ranges:
Exterior: -4 °F (-20 °C) to 149 °F (65 °C)
Interior: 14 °F (-10 °C) to 131 °F (55 °C)
-  Do not use a power drill for installation.
-  Do not install the batteries before installing the lock.
-  Rechargeable batteries or non-alkaline batteries are not recommended. Use AA alkaline batteries only.

Note: The Exterior Assembly of Bolt is waterproof, but the Interior Assembly is not waterproof due to the exposed battery compartment.

Statements

To ensure the best service, please create your account at www.ultraloq.com/register before using the product.

Terms & Policies

Before using any ULTRALOQ products, please read all applicable terms, rules, policies, and usage provisions found at www.ultraloq.com/privacy. By using your ULTRALOQ, you agree to be bound by the ULTRALOQ Privacy Policy.

Need Help?

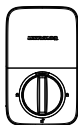
For technical documents and more

Please visit support.ultraloq.com

or call 1-844-439-8832

Packing List

Interior
Assembly



Exterior
Assembly



Interior Assembly
Mounting Plate



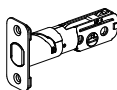
Strike



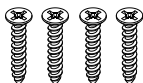
AA Alkaline Batteries



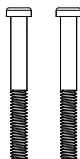
Bolt



Screw A



Screw B



Screw C



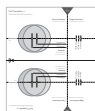
Backup Key



Reset Needle



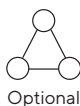
Drill Template



User Guide



Quick Setup
Guide



Installation Guide

Installation Video



Please scan the QR code to watch the installation video.

Or you can also view the website directly.
www.ultraloq.com/bolt/guide

1. Preparing Door

Check the door's dimensions.

Step 1

Measure to confirm that the door is between $1\frac{3}{8}" \sim 1\frac{3}{4}"$ (35 mm-57 mm) thick.

Step 2

Measure to confirm that the diameter of the hole is $2\frac{1}{8}"$ (53 mm).

Step 3

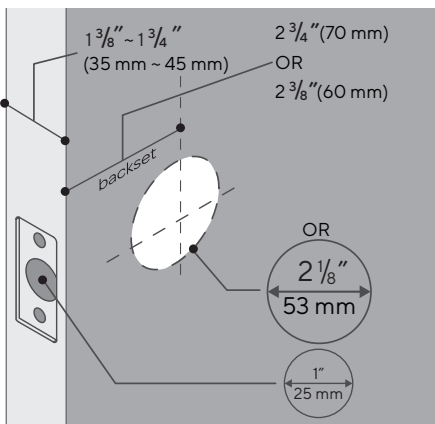
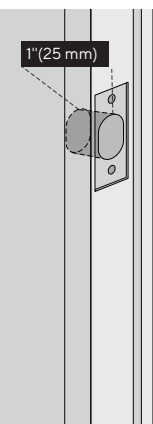
Measure to confirm that the backset is either $2\frac{3}{8}"$ or $2\frac{3}{4}"$ (60 mm or 70 mm).

Step 4

Measure to confirm that the diameter of the hole in the door edge is $1"$ (25 mm).

Step 5

Measure to confirm the depth of the hole in the frame is at least $1"$ (25 mm).



If you have a new door, please drill the holes according to Drill Template.

2. Installing Bolt and Strike

Step 1: Install the Bolt

- Insert the bolt into the door. Making sure the “UP ↑” icon faces upward.

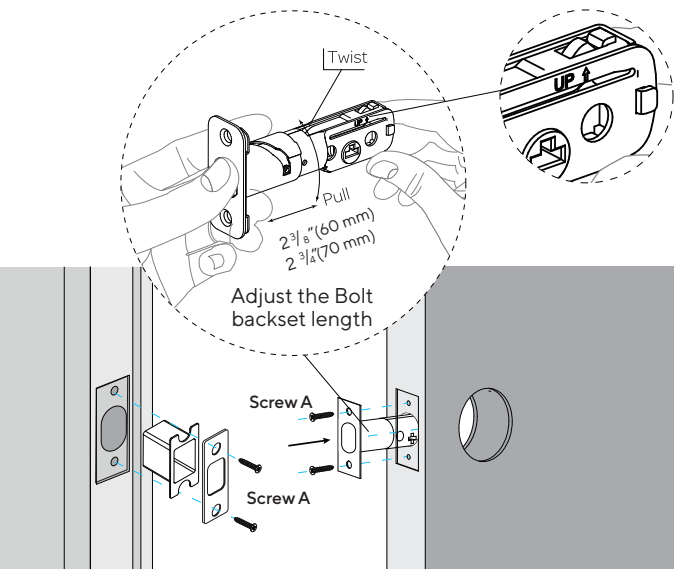
Note : By default, the bolt is set to a 2-3/8”(60mm) backset.

- To adjust to 2-3/4” (70mm): Make sure the bolt is fully retracted.
- Press the bolt, then twist it until you feel a slight click. This locks it in the extended backset position.

Note : Always ensure the bolt is retracted before making adjustments.

Step 2: Install the Strike

- Align the strike plate with the door frame.
- Secure it in place using the provided screws A(x4)



3. Installing the Exterior Assembly

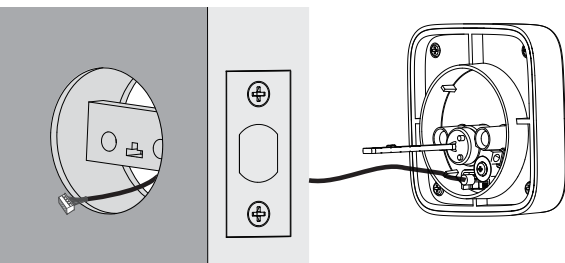
Step 1: Position and Install

- Ensure the bolt is fully retracted.
- Make sure the cylinder tailpiece is horizontal, with the bump pointing upward.
- Carefully install the Exterior Assembly onto the door.

Do not insert the mechanical key during installation.

Step 2

The direction of the cylinder tailpiece is consistent with the bolt. The cable goes through the hole **below** Bolt.



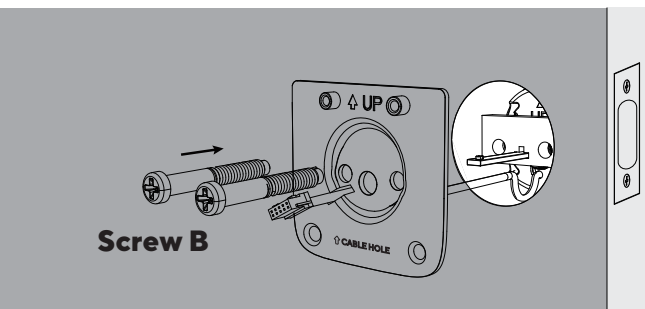
4. Installing the Interior Assembly Mounting Plate

Step 1: Route the cable

Route the cable through the hole in the Interior Assembly Mounting Plate.

Step 2: Secure the Mounting Plate

Secure the Interior Assembly Mounting Plate to the Exterior Assembly using Screw B(x2).



Warning: Longer screws for 45"~57" thickness door, Shorter screws for 35"~45" thickness door.

5. Installing the Interior Assembly

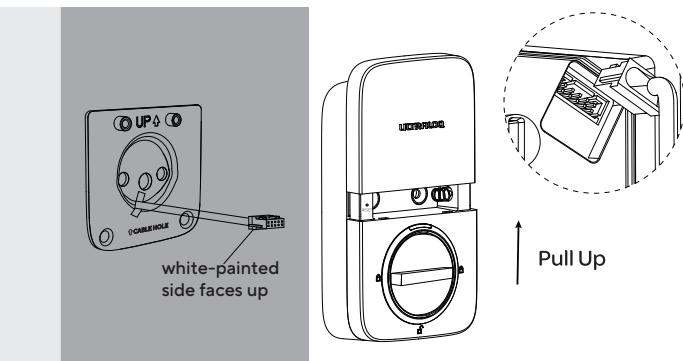
Warning: Do not install the batteries before installing the interior assembly, as this may prevent the keypad from powering on properly.

Step 1: Remove Battery Cover

Remove the battery cover from the Interior Assembly.

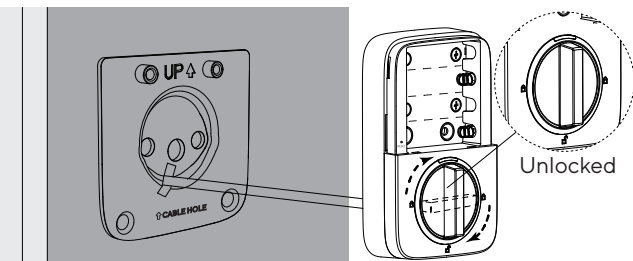
Step 2: Connect the cable to the Interior Assembly

- Insert the cable connector into the socket on the Interior Assembly.
- Ensure the white-painted side is facing up.
- Press the connector firmly until it is fully seated.



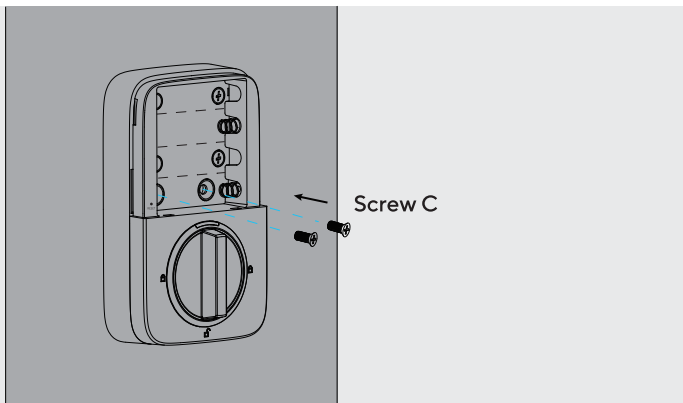
Step 3: Set to Unlocked Position

- Rotate the knob to the vertical position to keep the lock unlocked during installation.



Step 4

Attach the Interior Assembly to Mounting Plate and tighten Screw C (x2).



6. Installing the Batteries and Performing the Door Handling Process

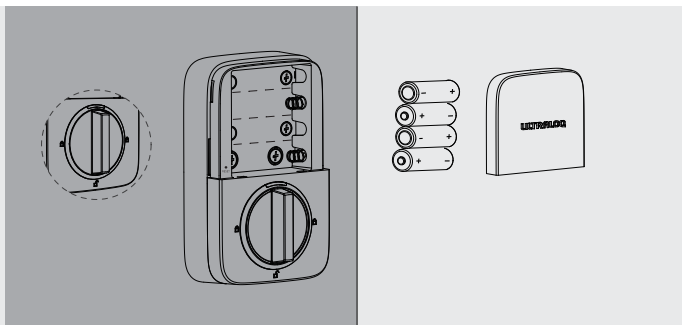
This step helps your lock learn which way your door opens, so it can work properly.

Step 1

Rotate the knob to the vertical position to keep the lock unlocked.

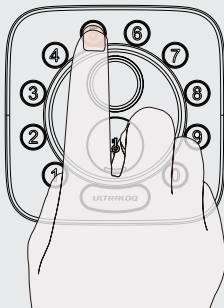
Step 2

Insert 4 AA alkaline Batteries and replace the battery cover.



Step 3: Perform Direction Calibration

- Keep the bolt in the unlocked position, then press and hold the “5” key for 3 seconds until you hear 2 beeps.
- The lock will automatically rotate and begin self-calibrating the door direction, which will complete in approximately 5 seconds.



Note: To prevent deadbolt jamming, ensure this step is performed after the lock is installed on the door.

User Guide

User Guide Video

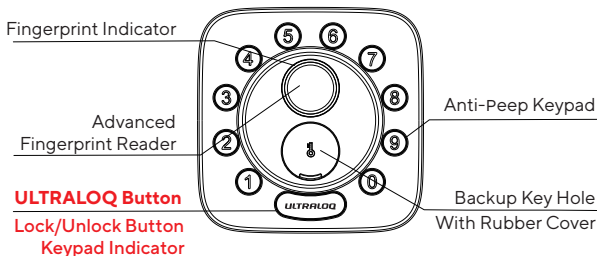
Please scan the QR code on the left to watch the user guide video. You can also visit the website directly at <https://support.ultraloq.com/hc/en-us/articles/49607301033241-Installation-and-Setup-Guide-for-ULTRALOQ-Bolt>



For the configuration guide for integrations (Alexa, Google Assistant, IFTTT, Apple Home, and SmartThings), please scan the QR code on the right or visit support.ultraloq.com, then choose “Works with” to watch the user guide video.

1. Product Overview

1.1 Exterior Components



● **Advanced Fingerprint Reader**

Verifies your fingerprint to unlock the door from the outside.

○ **Fingerprint Indicator**

Indicator:

1. Green: pass or setup successful.
2. Red: failed.
3. Blinking Red: low battery alarm.

● **ULTRALOQ Button(Lock/Unlock Button)**

Used to manually lock/unlock the door, illuminate the keypad, and confirm actions.

Indicator:

1. Green: pass or setup successful.
2. Blue: connecting or processing.
3. Red: failed.
4. Blinking Red: low battery alarm.

🔑 **Backup Key Hole With Rubber Cover**

Allows mechanical key access in case of battery failure or in other emergency situations.

① **Anti-Peep Keypad**

Supports secure code entry by allowing random digits before or after the correct code.

ULTRALOQ Button has the following functions:

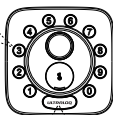
One-touch
locking



Tap to lock when
going outside

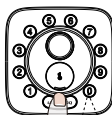
Confirm unlocking after
entering the password

Step 1 Input
Password



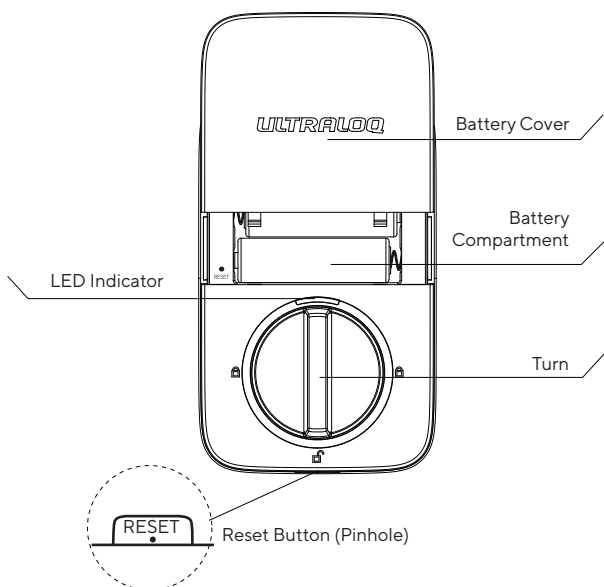
Step 2 Tap

Illuminate
the keypad



Illuminate the
keyboard in darkness

1.2 Interior Components



Reset Button (Pinhole)

Used to reset the lock to Factory Default settings.

To reset, use a Reset Needle to press and hold the reset button (located under the battery cover) for about 10 seconds until you hear one long beep followed by two short beeps.

Note: If the lock was paired with an app, please first tap "Remove Device" in the app before resetting. For detailed reset instructions, refer to Page 14.

Battery Compartment

Hold 4 AA alkaline Batteries.

Note: Insert 4 AA alkaline Batteries or UTEC Lithium Batteries. Rechargeable or other battery types are not recommended.

Battery Cover

Protects the battery compartment and includes labels for the Program Code and (optionally) the Matter setup QR code.

Thumb Turn

Used to manually lock and unlock the door from inside.

LED Indicator

Turns green when the door is unlocked.

1.3 Low Battery Alarm

When the battery is low, the lock will beep three times, and the The ULTRALQO button will flash red.

Note: Please replace the batteries promptly to avoid lock failure.

2. Lock Setup



Scan QR code to download the App



Step 1: Download App

Scan the QR code to download the app, or search for:

- "U home" in the App Store (iOS).
- "U home" in the Google Play Store (Android).

Step 2: Register and Log In

- Open the U home app.
- Create an account or log in with your existing credentials.

Step 3: Stay within 10 feet of the lock

- Ensure the lock is in **Factory Default Mode**. To reset your lock to Factory Default Mode, please refer to Page 14.
- Turn on Bluetooth on your smartphone.
- Stay within 10 feet of the lock.
- Press any button on the lock keypad to wake up the Bluetooth.
- Search for the lock within the app in 30 seconds.

Step 4: Pair the Lock

- Follow the on-screen instructions in the app to complete pairing.
- The default mode in factory settings is Matter Mode.
Matter Mode: Add the device to your smart Matter hub via Matter over Thread to integrate it into your smart platform.
The two modes cannot coexist. You can switch modes via the U home app.
- Ensure your phone is connected to a 2.4GHz Wi-Fi network.

5GHz Wi-Fi networks are not supported.

Don't want to use the app?

You can program the lock manually in Standalone Mode. See the guide on Page 15 for instructions.

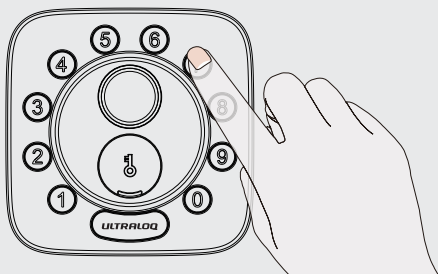
3. Using Your Lock

3.1 Unlocking From Outside

You can unlock the LOCK using any of the following methods:

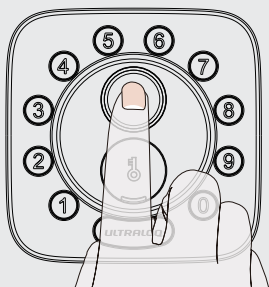
- **User Code**

Enter your 4-8 digit code, then press the ULTRALOCK button to unlock.



- **Fingerprint**

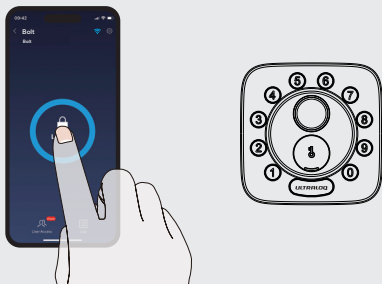
Place your finger on Fingerprint Reader to unlock.



- **Smartphone (U home App)**

Unlock via Bluetooth or Wi-Fi using the U home app. Refer to the in-app guide for setup, pairing, and remote access.

Note: To unlock via Bluetooth, press any keypad button to activate Bluetooth and connect within 30 seconds.



3.2 Locking From Outside

- Press ULTRALOCK button to lock manually.
- Enable Auto Lock feature and the lock to automatically relock after the door is closed.

3.3 Unlocking From Inside

- Rotate the interior thumb turn to the vertical position to unlock.

3.4 Resetting the Lock

Resetting will erase all data and restore factory default settings

- **If you are the U home app owner:**

1. Open the app and click "Remove Device" to remove the lock from your U home app.
2. You will hear 1 long beep followed by 2 short beeps, confirming the reset was successful.

- **If the lock does not reset automatically:**

1. Use a Reset Needle to press the Reset Button under the battery cover.
2. Hold for 10 seconds, until you hear 1 long beep followed by 2 short beeps.

3.5 Replacing the Batteries

Use **4 high-quality AA alkaline batteries** when power is low or depleted. Open the battery cover and replace all batteries at once for optimal performance.

Important Note:

Keep at least one Backup Key in a secure location outside your home in case of battery failure.

3.6 Enable Or Disable Auto Lock

You can enable or disable the Auto Lock feature directly from the keypad:

To Enable Auto Lock:

- Ensure the bolt is in the unlocked position.
- Press and hold the "1" button for 3 seconds.
- The Indicator will light up green and you'll hear two beeps.

To Disable Auto Lock:

- Ensure the bolt is in the unlocked position.
- Press and hold the "0" button for 3 seconds.
- The Checkmark Indicator will light up green and you'll hear two beeps.

Tip: You can also enable/disable Auto Lock and customize the relock delay in the U home app.

3.7 Anti-Peep Keypad

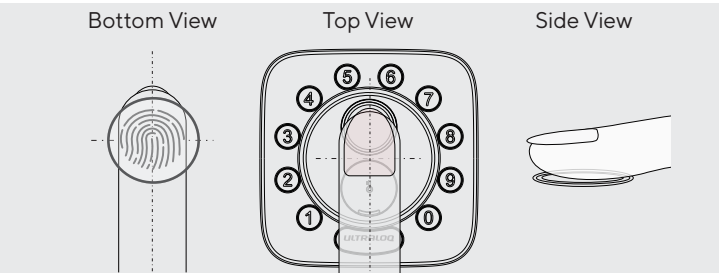
The lock supports a Vague Code (anti-peep feature) of up to 16-digits. As long as your correct user code appears in the correct sequence within the digits entered, the door will unlock.

Example
User Code: 123456
Valid Vague Code

- 123456XXXXXX
- XXXXXX123456
- XXX123456XXX

"X" represents any random digit. The correct code must appear in order, even if surrounded by other digits.

3.8 Fingerprint Placement Tips



1. For a higher recognition rate, please try to cover the Fingerprint Reader completely with your finger, touching the surrounding metal ring.
2. Make sure that your finger and Fingerprint Reader are clean and dry. For Fingerprint Reader, use a clean, lint-free cloth to wipe off any dirt or debris.
3. Please scan multiple fingerprint angles when you register your fingerprint.
4. While scanning your finger, you shouldn't tap too quickly or move your finger around.









4. Standalone Mode Programming Guide

Note: It is recommended to use the U home app to program your lock. If you don't have a smartphone or prefer not to use the app, you can follow the steps below.

Warning: Standalone Mode is NOT available once the lock is registered in the app. To enable Standalone Mode, you must reset the lock to Factory Default Mode first.









4.1 Add Admin Code in Standalone Mode

To add the Admin Code, you need the Program Code found on the battery cover.





Operation	LED & Sound Indicator
Hold  for 3 sec	2 beeps with  light on
Enter 6 digit Program Code and press 	2 beeps with  light on
Enter a 4-8 digit Admin Code and press 	2 beeps with  light on
Re-enter the Admin Code and press 	2 beeps with  light on

Success	All lights off
---------	----------------

4.2 Add User Code in Standalone Mode

Operation	LED & Sound Indicator
Hold  for 3 sec	2 beeps with  light on
Enter your Admin Code and press 	2 beeps with  light on
Enter a 4-8 digit User Code and press 	2 beeps with  light on
Re-enter the User Code and press 	2 beeps with  light on
Success	All lights off

4.3 Add Fingerprint in Standalone Mode

Operation	LED & Sound Indicator
Hold  for 3 sec	2 beeps with  light on
Enter your Admin Code and press 	2 beeps with  light on
Press Fingerprint 6 times	5 beeps and digit buttons blink 5 times
Success	All lights off

4.4 Delete the Admin Code and all User Codes

To delete the Admin and all Users Codes, reset the lock to Factory Default Mode.

4.5 How to Reset in Standalone Mode?

- Use a Reset Needle to press the Reset Button (located under the battery cover).
- Hold for 10 seconds, until you hear 1 long beep followed by 2 short beeps.

The lock is now reset and ready to be programmed again in Standalone Mode.

FAQ

1. How do I reset Bolt?

Resetting will erase all data and restore factory default settings.

- If registered in the U home app: Tap "Remove Device" in the app. The lock will automatically reset.
- If in Standalone Mode: Use a Reset Needle to press the Reset Button (under the battery cover) for 10 seconds, until you hear 1 long beep followed by 2 short beeps.

2. What if I lost the smartphone paired with the lock?

- Visit www.uhomelabs.com/account.
- Or login to the U home app on another smartphone or tablet.
- Change your U home Account password to secure your device.

3. How can I unlock the lock if the battery dies?

- When the battery is low, the lock will emit three beeps and the low battery indicator will light up.
- Replace the batteries as soon as possible.
- If the battery is fully drained, use the backup key to unlock the door.

Please keep at least one backup key in secure location outside your home.

4. What's the difference between Owner, Admin, Normal User and Temporary User?

Role	Permissions
Owner	Original registrant. Full access to settings, logs, and user management.
Admin	Can unlock via app, code, or keycard. Can manage users and settings.
Normal User	Can unlock via app, code, or keycard. No admin privileges.
Temporary User	Limited access during a scheduled time window.

5. Can I use third-party accessories (e.g., bolt)?

It is recommended to use the original ULTRALOC accessories for best performance and stability.

6. What is the user capacity and the log capacity?

The lock can store up to 50 users, and each user can register 1 code and 2 fingerprints. It can also store up to 1,000 activity logs. Once it's full, the newest entries will automatically overwrite the oldest.

7. How can I extend battery life?

Disable Remote Access to Lock in the U home app to significantly extend battery life.

Note: Disabling this will turn off remote features including Alexa, Google Assistant, IFTTT, Apple Home, SmartThings and smart notifications.

8. Do I need an ULTRALOCK Bridge?

No, the lock has built-in Wi-Fi and does not require an external hub.

9. What network does the lock support?


The lock supports 2.4GHz Wi-Fi only. 5Ghz Wi-Fi is not supported.

10. What is the Program Code?

The Program Code is a unique 6-digit code found on the battery cover. It is required to unlock the lock in Factory Default Mode and to initialize programming in Standalone Mode.

Keep Your Records

e.g.

DATE	ADMIN CODE	
NAME	USER CODE	
Will Smith	12345678	✓

FCC Caution.

This device complies with part 15 of the FCC Rules. Operation is subject to the following two conditions:

- (1) This device may not cause harmful interference, and
- (2) this device must accept any interference received, including interference that may cause undesired operation.

Any Changes or modifications not expressly approved by the party responsible for compliance could void the user's authority to operate the equipment.

Note: This equipment has been tested and found to comply with the limits for a Class B digital device, pursuant to part 15 of the FCC Rules. These limits are designed to provide reasonable protection against harmful interference in a residential installation. This equipment generates uses and can radiate radio frequency energy and, if not installed and used in accordance with the instructions, may cause harmful interference to radio communications. However, there is no guarantee that interference will not occur in a particular installation. If this equipment does cause harmful interference to radio or television reception, which can be determined by turning the equipment off and on, the user is encouraged to try to correct the interference by one or more of the following measures:

- Reorient or relocate the receiving antenna.
- Increase the separation between the equipment and receiver.
- Connect the equipment into an outlet on a circuit different from that to which the receiver is connected.
- Consult the dealer or an experienced radio/TV technician for help.

*RF warning for Mobile device:

This equipment complies with FCC radiation exposure limits set forth for an uncontrolled environment. This equipment should be installed and operated with minimum distance 20cm between the radiator & your body.

ULTRALOQ

A Brand of Xthings

© 2025 Xthings Inc. All rights reserved.

ULTRALOQ and ULTRALOQ logo are trademarks of Xthings Inc. or its affiliates registered in the U.S. and other countries and regions. All other trademarks are the property of their respective owners.

Xthings Inc. 47703 Fremont Boulevard, Fremont, CA 94538

Engineered by Xthings, assembled in China.