

ATTACHMENT PHOTOGRAPHS OF EUT

Photo 1



Photo 2



Photo 3

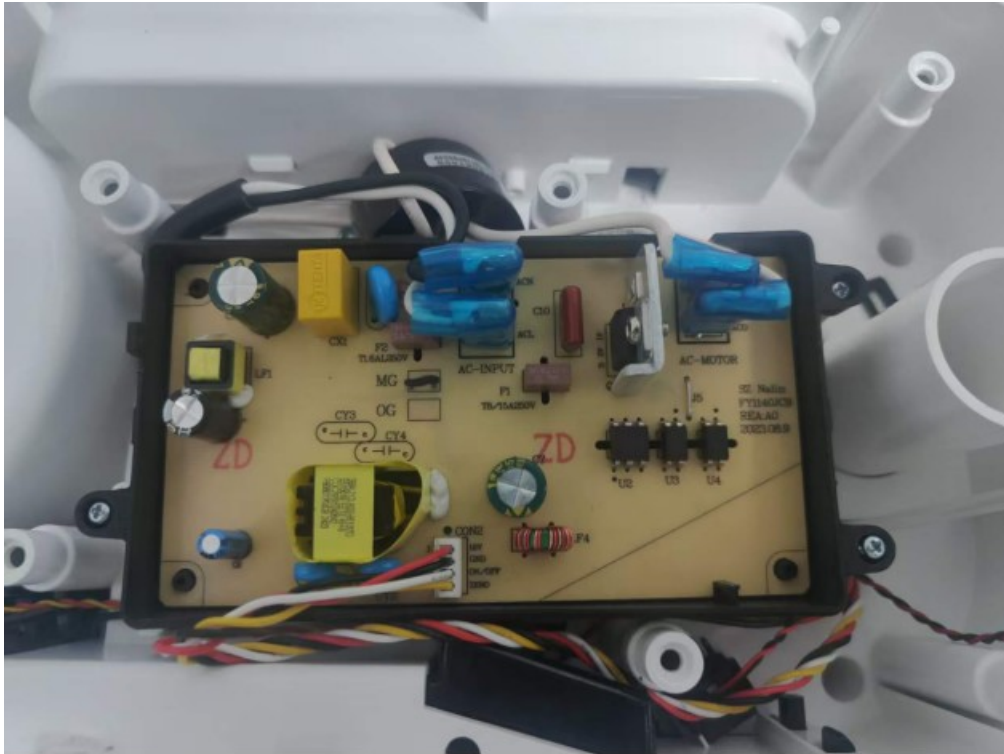


Photo 4

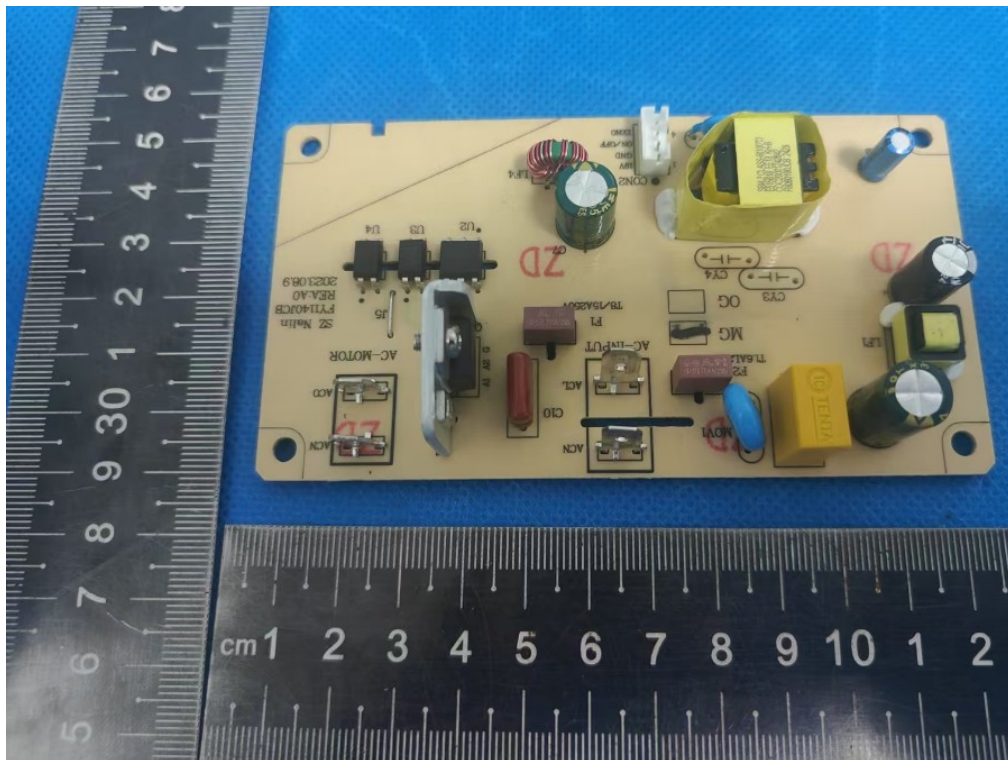


Photo 5

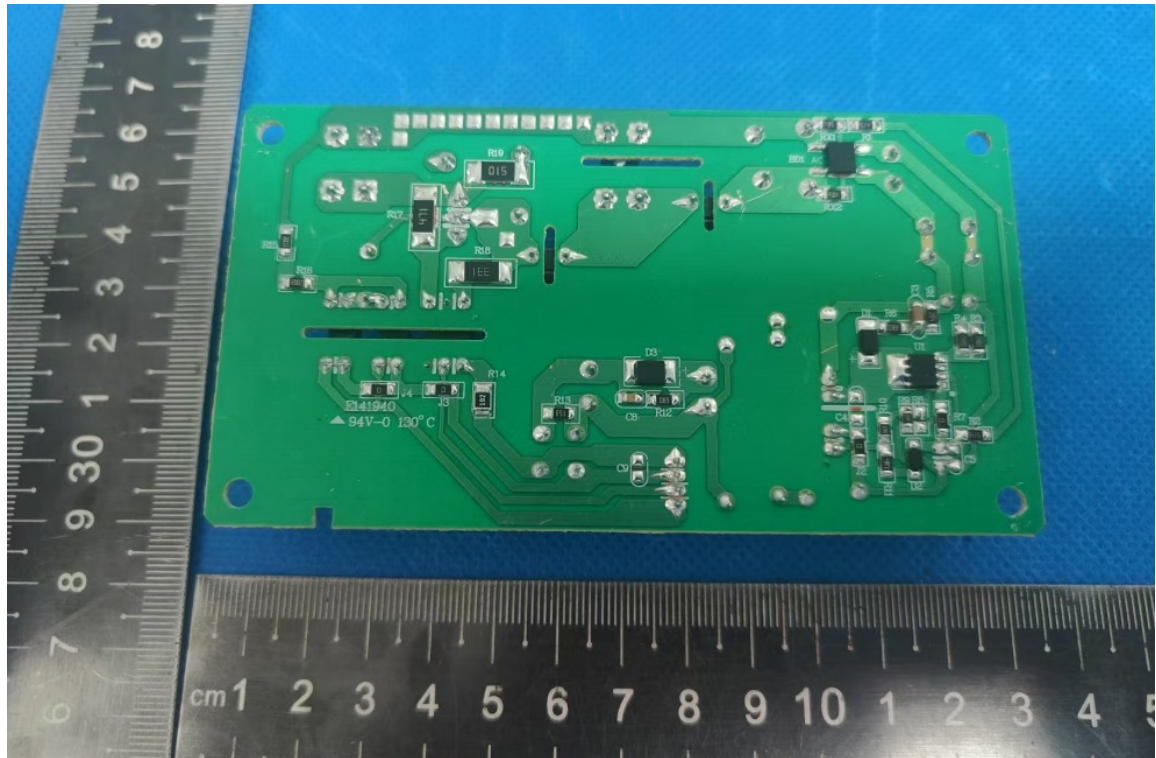


Photo 6



Photo 7



Photo 8

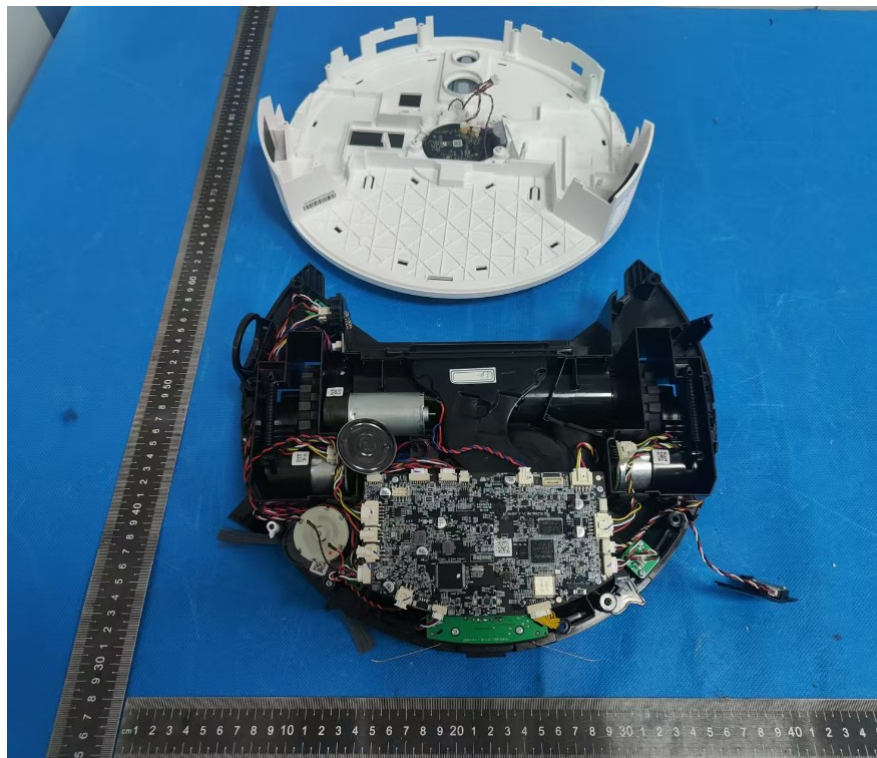


Photo 9

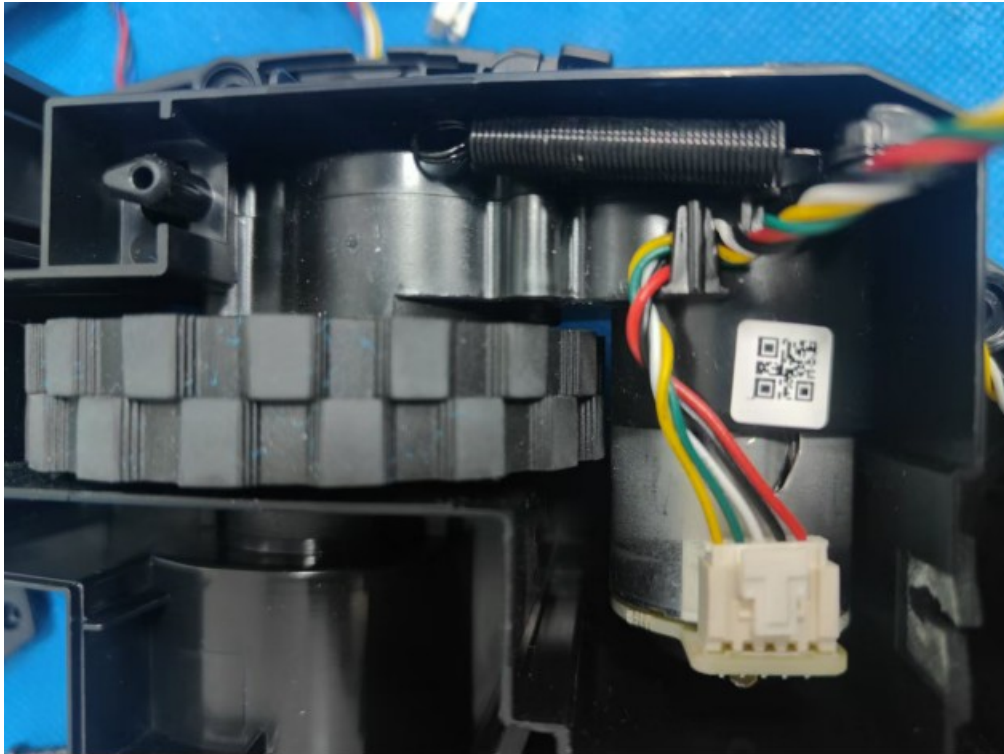


Photo 10

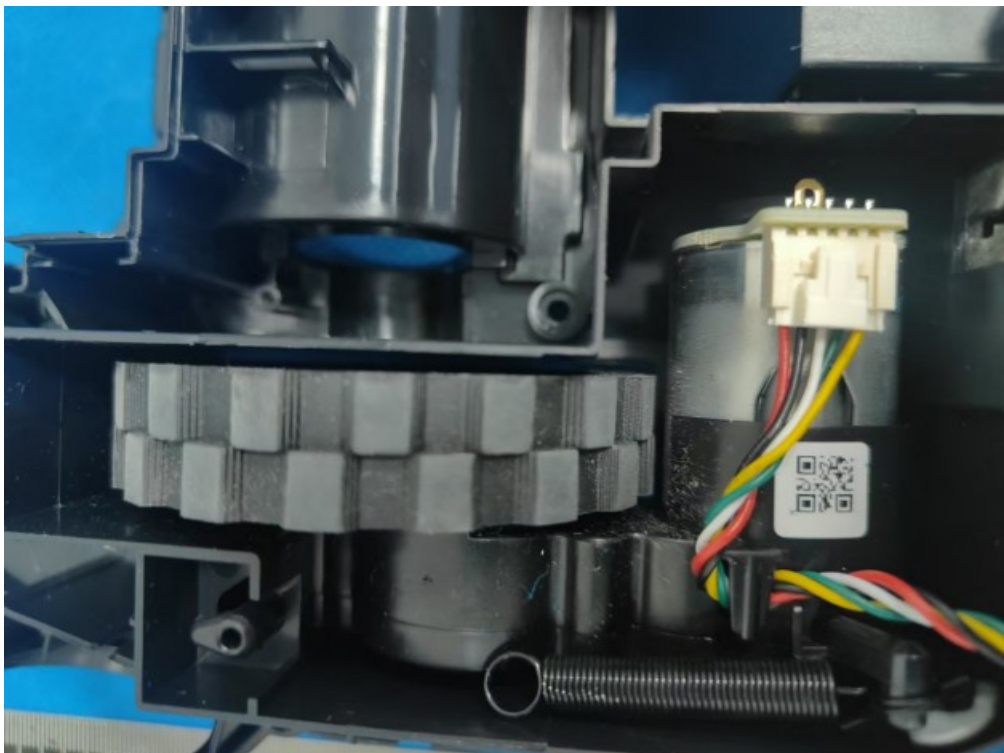


Photo 11

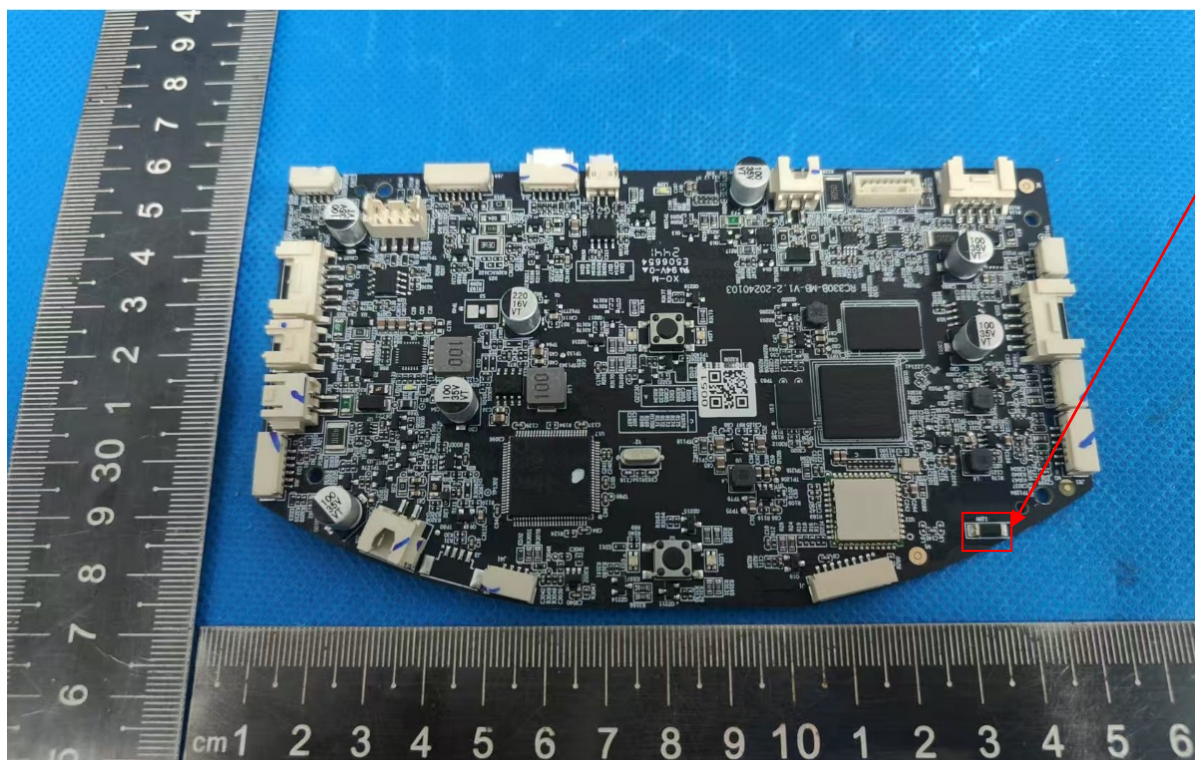


Photo 12

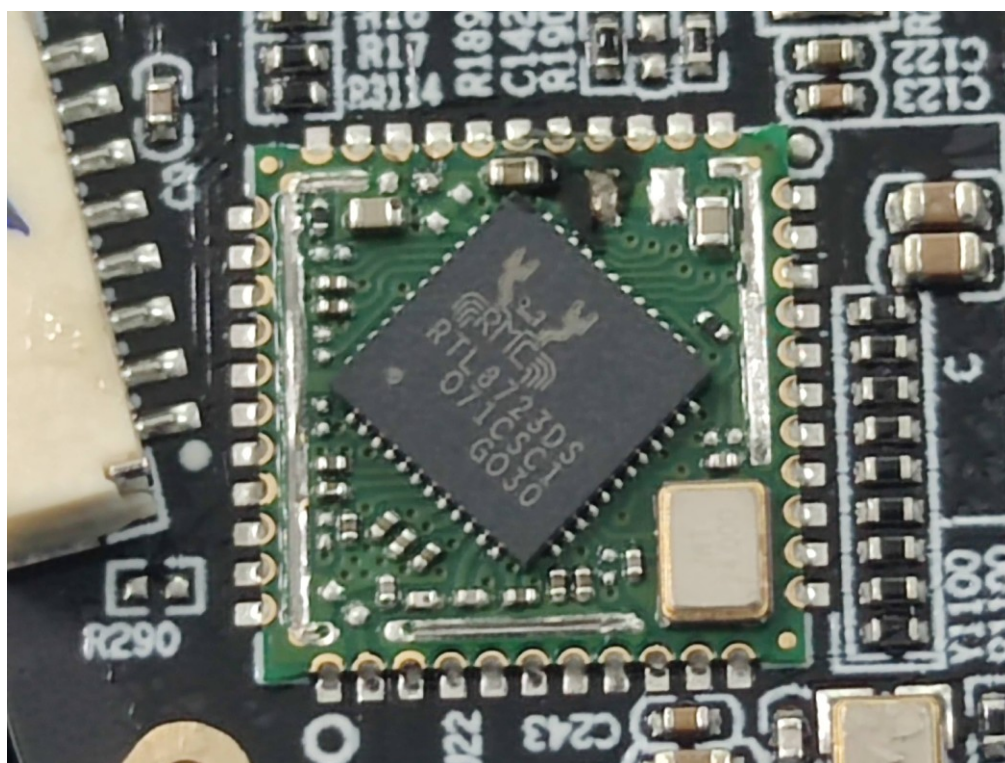


Photo 13

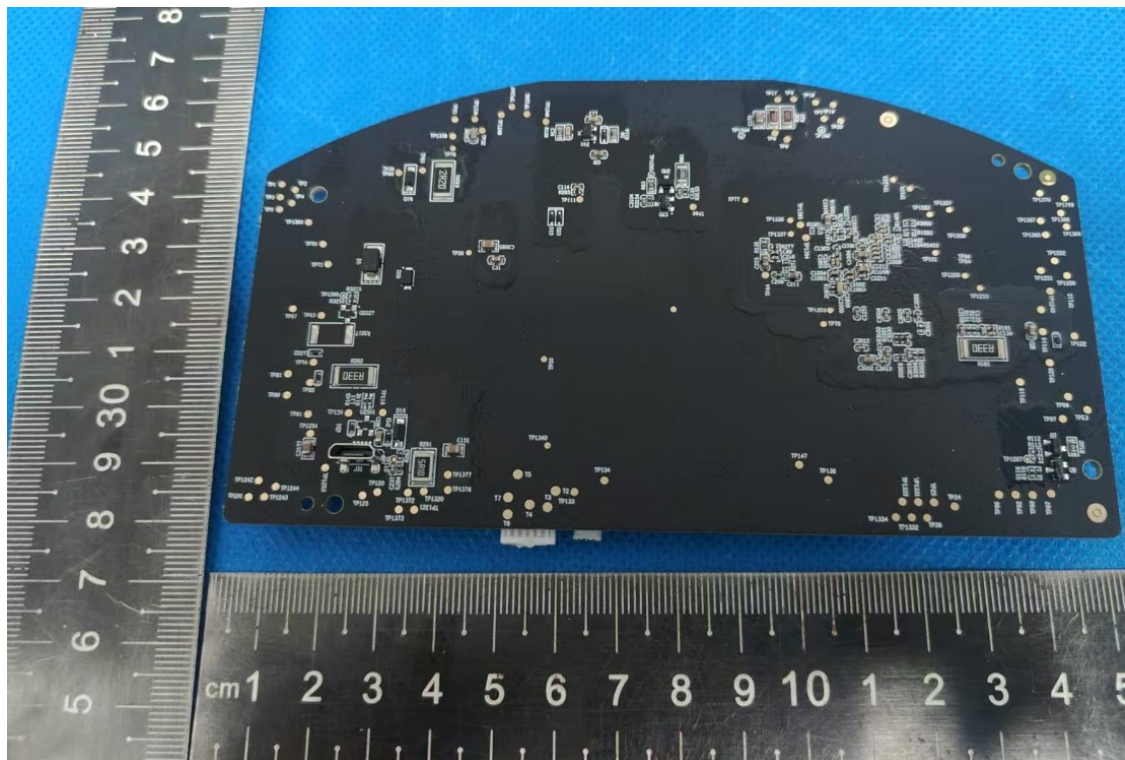


Photo 14

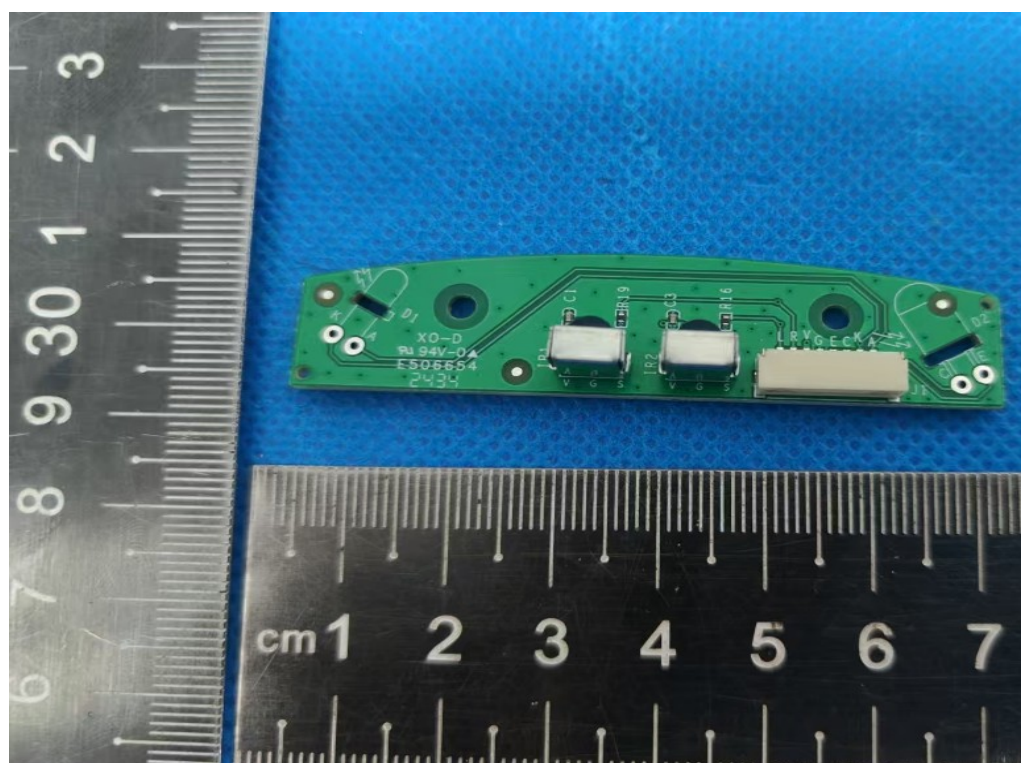


Photo 15

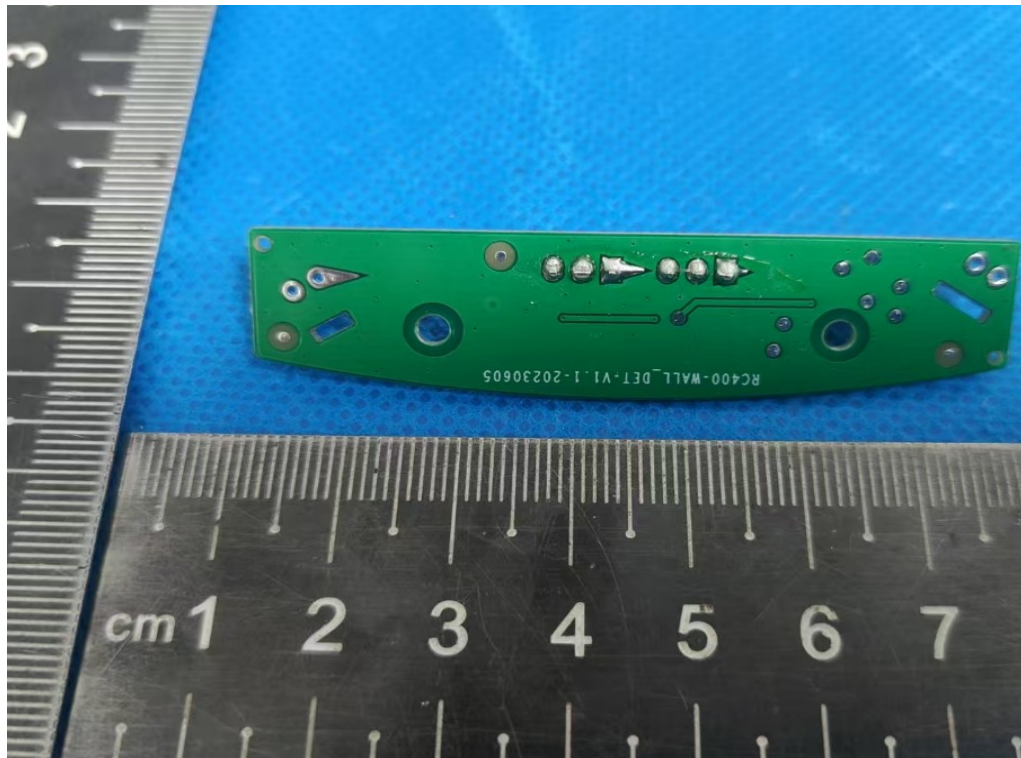


Photo 16

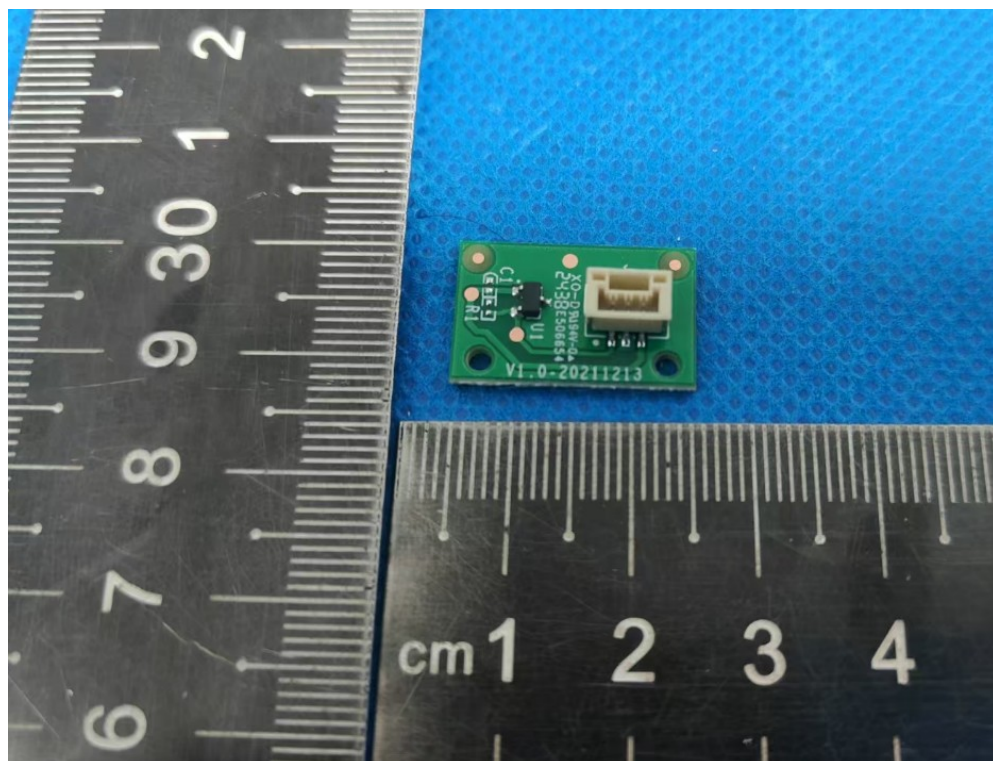


Photo 17

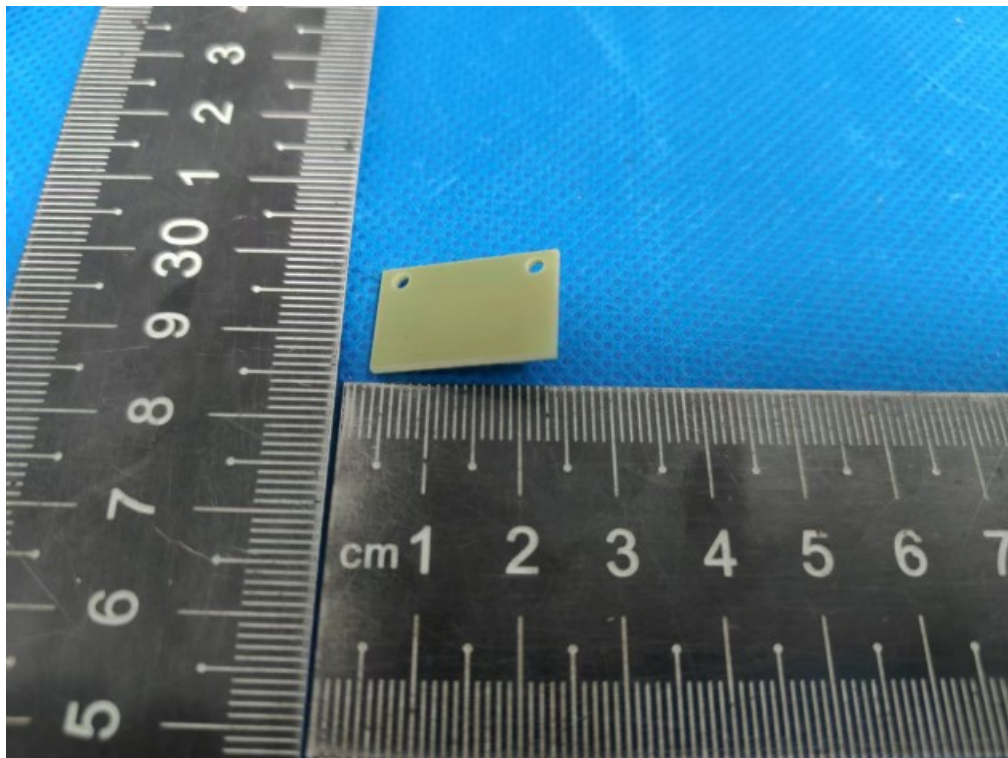


Photo 18

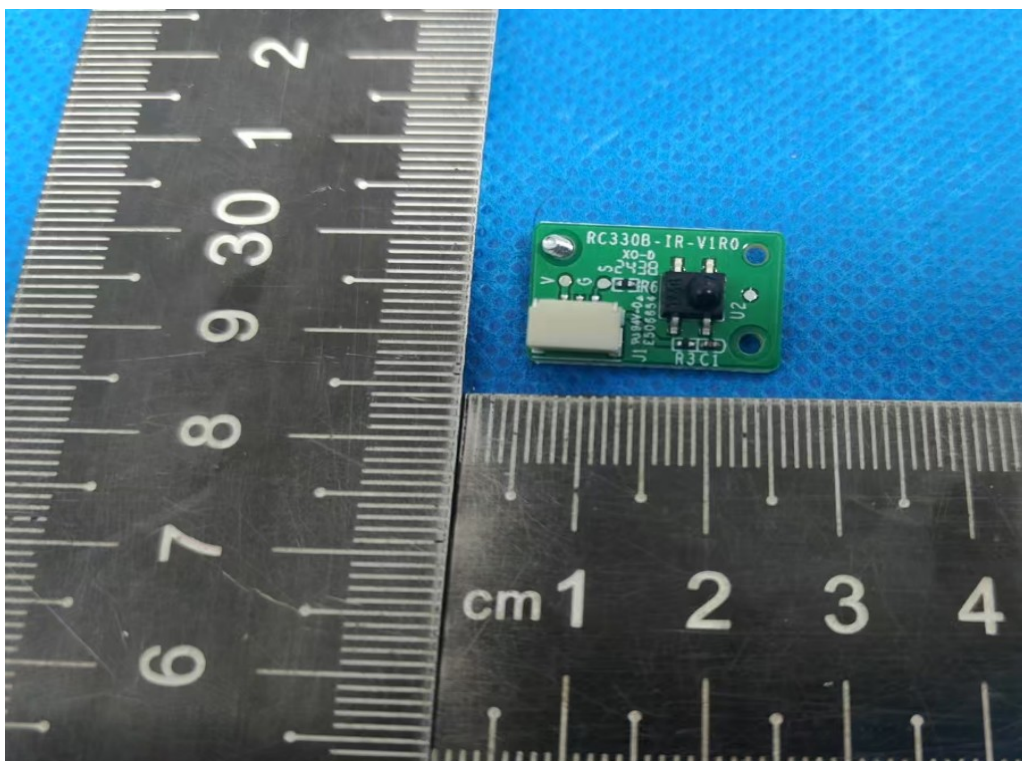


Photo 19

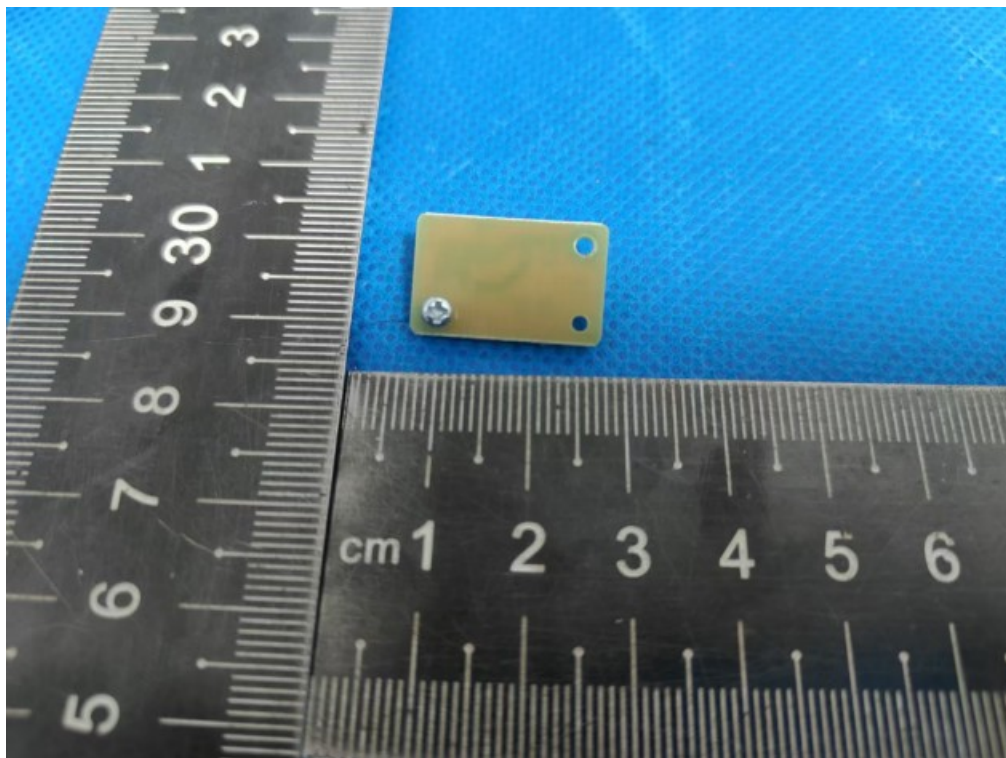


Photo 20

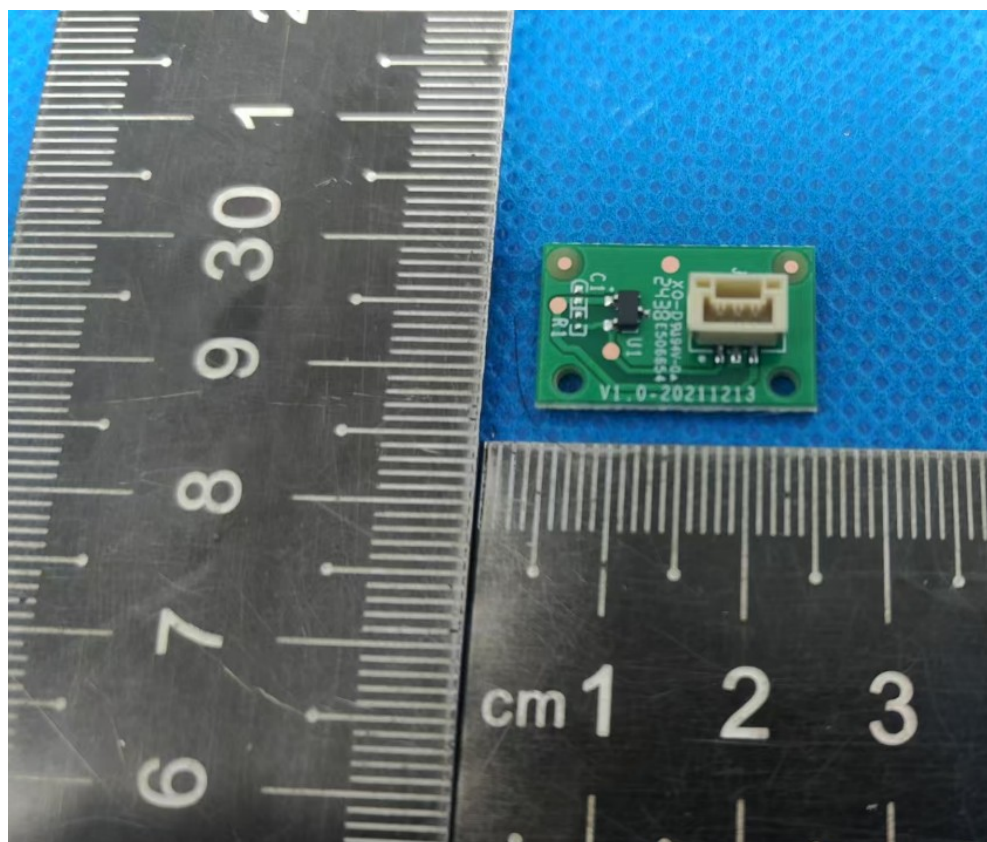


Photo 21

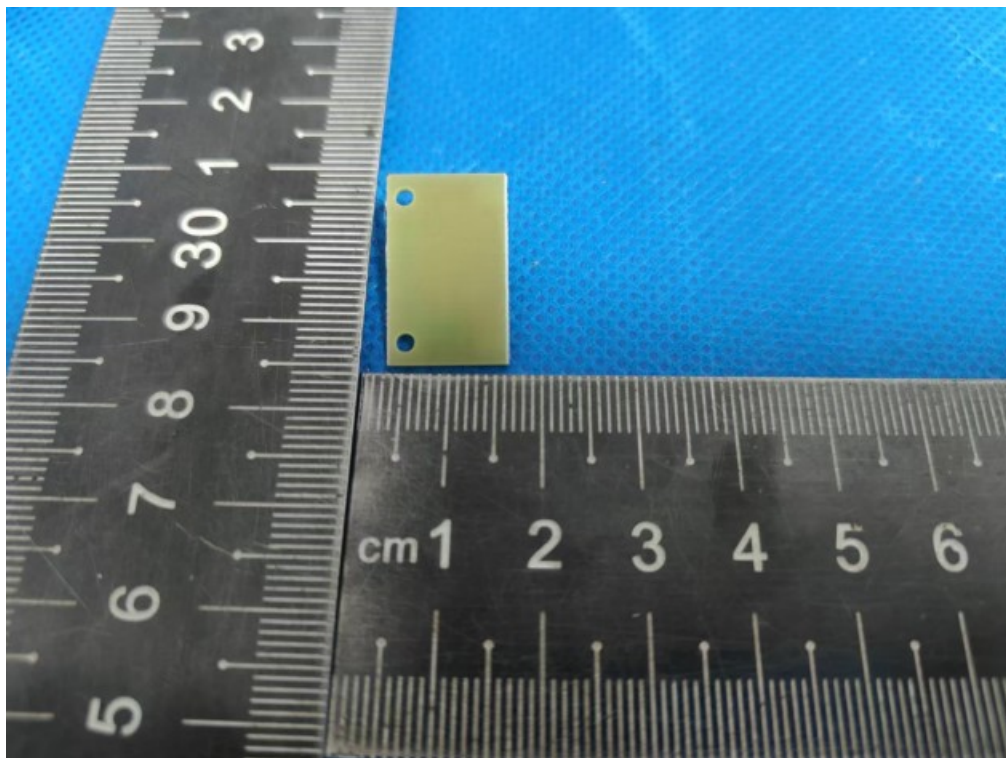


Photo 22

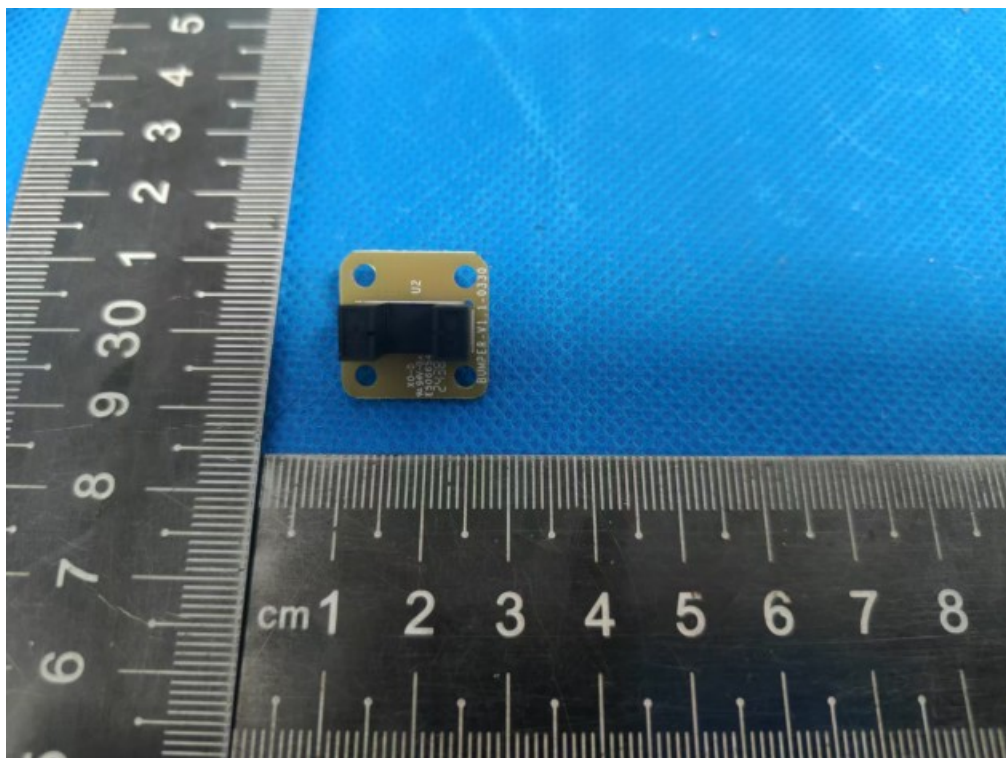


Photo 25

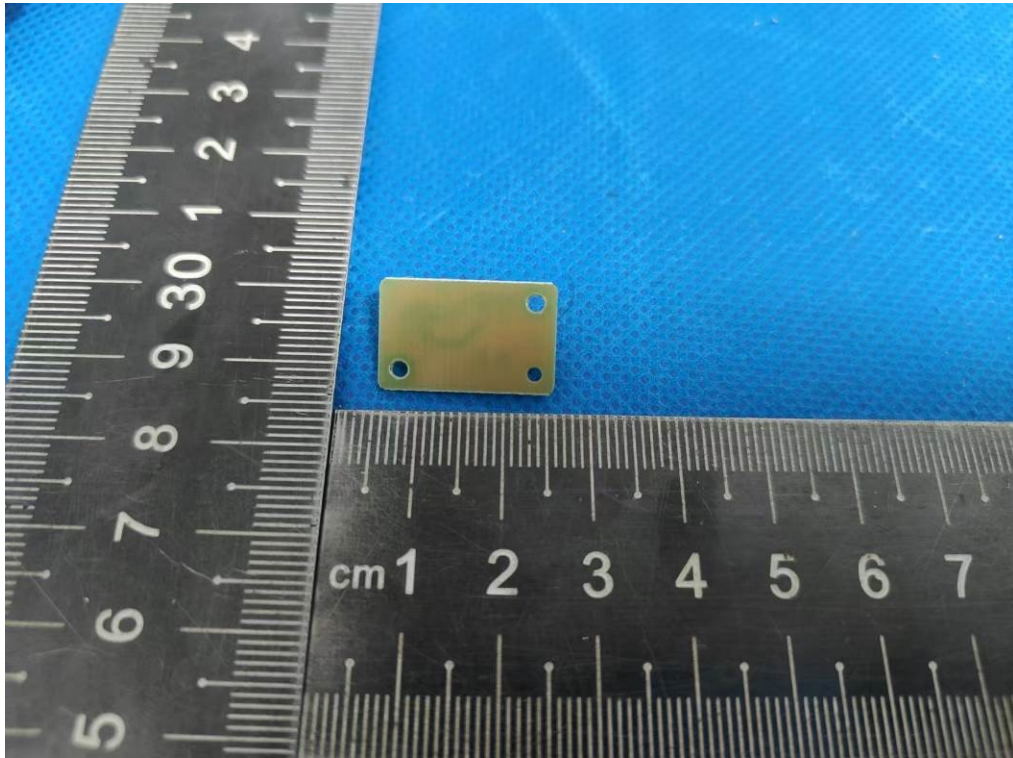


Photo 26



A small, cylindrical, silver-colored motor with a black plastic housing and a red and blue wire. The motor is labeled "R390SH-23125 12V 7400RPM". It is shown next to a ruler for scale.

The image shows a circular black printed circuit board (PCB) with various electronic components. A ruler is placed next to it for scale. The PCB features a microcontroller, memory, and various connectors. A QR code is visible on the board, and the text "2024/4/2 VPI00L-B V1.3" is printed. The board is placed on a blue textured surface.

Photo 29

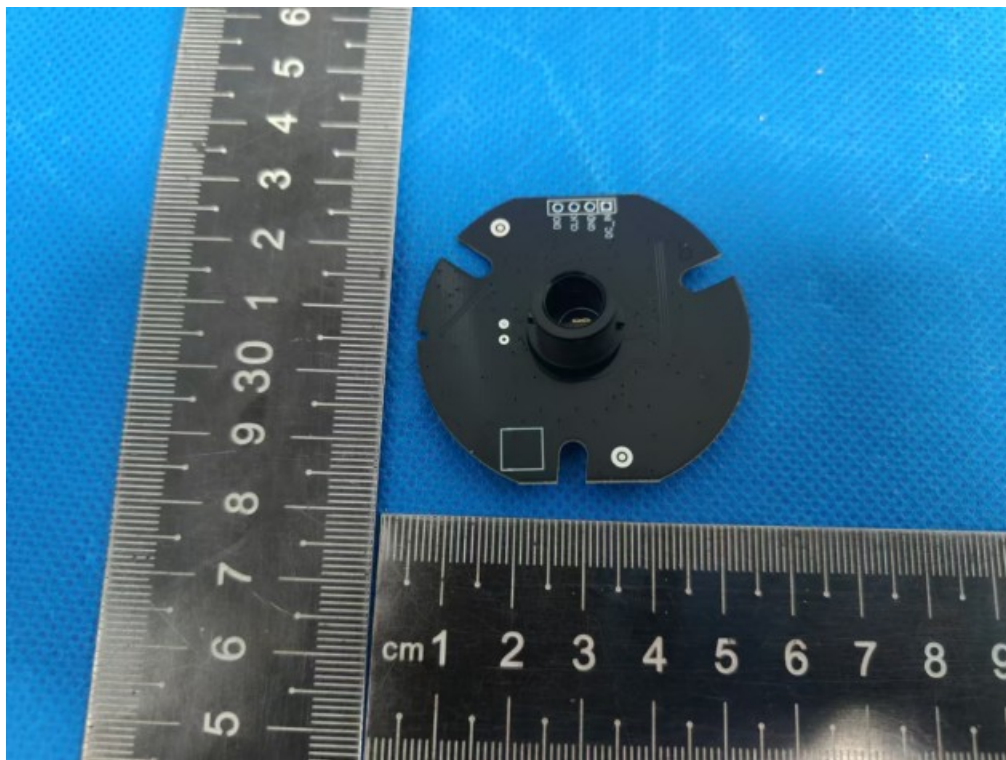


Photo 30



Photo 31

