

### 3. Group settings

Multiple light can be established within the same group for unified control.

Multiple groups can be established based on preferences.

A single mobile phone can connect to a maximum of 3–6 lights.

If you want to change the group information or the lights within the group, choose any of the following ways to enter the "Edit Device Information" page:

①. Long press the group that needs to be modified, click on "Attribute modification".

②. Enter the control panel and click "Edit".

For specific content description of the Edit Device Information page, please refer to the last page.

Method for Creating Groups:

①. Click on the "+" in the upper right corner. Select Add Group.

②. Enter the Add Group interface. Select the light you wish to connect

③. After naming the light, Click "OK" to confirm

④. The interface displayed below appears after the group has been successfully added. Click to enter the control interface

Group Function Settings

To ensure synchronized lighting effects within a group, please configure the following before adjusting modes:

① Before adjusting Dynamic Mode: First standardize the brightness and speed parameters to ensure consistent lighting effects across all lights.

② Before adjusting Music Mode: First adjust the sensitivity to synchronize the group's response to music.

Speed Brightness

Sensitivity

### 4. Freely Adjust Colors/ Brightness

Through the control panel, you can freely adjust the color and brightness of the lighting.

RGB Mode: Supports multiple color options. Precisely adjust light colors by sliding the color palette or directly entering RGB values.

White Light Mode: Offers three color temperature options Cold warm light, warm light, and cold light to meet different scenario requirements.

RGB Mode Control Panel

Back button to return to the device management page

Color Mode Selection

Setting RGB values

Edit button to enter the page for editing device properties. For further details, please refer to the last page

RGB switch button, in the middle of the color disk can control the RGB on and off. Color cannot be adjusted after closing

Slide the color palette to adjust the light color

Customize button to customize the color, long press to delete the color

Sliding brightness bar adjusts brightness

Master switch, control lights on and off

Color button, click to enter the color interface

Click the rhythm button to enter the rhythm interface

Click the mode button to enter the mode interface

Timing button, tap to enter the timing interface

Click the scene button to enter the scene interface

Click the scene button to enter the scene interface

Click the scene button to enter the scene interface

Click the scene button to enter the scene interface

Click the scene button to enter the scene interface

Click the scene button to enter the scene interface

Click the scene button to enter the scene interface

Click the scene button to enter the scene interface

Click the scene button to enter the scene interface

Click the scene button to enter the scene interface

Click the scene button to enter the scene interface

Click the scene button to enter the scene interface

Click the scene button to enter the scene interface

Click the scene button to enter the scene interface

Click the scene button to enter the scene interface

Click the scene button to enter the scene interface

Click the scene button to enter the scene interface

Click the scene button to enter the scene interface

Click the scene button to enter the scene interface

Click the scene button to enter the scene interface

Click the scene button to enter the scene interface

Click the scene button to enter the scene interface

Click the scene button to enter the scene interface

### 5. Music Mode

Light rhythm control interface. Select rhythmic sound source and rhythmic mode effect.

On the mobile microphone screen, select the mobile microphone as the sound collector

External microphone interface, select the controller hardware integrated microphone as a sound collector, capture the music of the surrounding environment and control the change of the light with the change of the rhythm and intensity of the music

There are a total of 8 rhythmic modes available for selection. This function is available for Device MIC, Phone MIC and Music modes

Music interface, play the music stored in the phone the light changes with the music

In the Phone MIC Mode

Various preset modes are available

Speed slider to control the speed of dynamic mode

Brightness slider to control the maximum brightness for dynamic mode

Click on the picture to set the corresponding lighting scene

Feel free to set the time in the alarm function according to your own ideas, then the time automatically turns on or off.

Enable or disable the schedule of lights is turned on

Time setting of lights start

Enable or disable the schedule of lights is turned off

Time setting of lights ends

Disconnect the device's power supply and open the mobile app. Bring the device close to the product to re-pair. If unsuccessful, repeat the process multiple times.

Distance Disconnection Method

Move the product away from the currently paired device, once the distance exceeds the effective range, the connection will automatically disconnect.

You can then reconnect using your own phone.

Note: It is recommended to try(1)first. If it fails, proceed with(2).

Click the scene button to enter the scene interface

Click the scene button to enter the scene interface

Click the scene button to enter the scene interface

Click the scene button to enter the scene interface

Click the scene button to enter the scene interface

Click the scene button to enter the scene interface

Click the scene button to enter the scene interface

Click the scene button to enter the scene interface

Click the scene button to enter the scene interface

Click the scene button to enter the scene interface

Click the scene button to enter the scene interface

Click the scene button to enter the scene interface

Click the scene button to enter the scene interface

Click the scene button to enter the scene interface

Click the scene button to enter the scene interface

Click the scene button to enter the scene interface

Click the scene button to enter the scene interface

Click the scene button to enter the scene interface

Click the scene button to enter the scene interface

Click the scene button to enter the scene interface

### 6. Dynamic mode interface

Pre-programmed style modes make your party more exciting, create a romantic, relaxed, party atmosphere

Click on the picture to set the corresponding lighting scene

Feel free to set the time in the alarm function according to your own ideas, then the time automatically turns on or off.

Enable or disable the schedule of lights is turned on

Time setting of lights start

Enable or disable the schedule of lights is turned off

Time setting of lights ends

Disconnect the device's power supply and open the mobile app. Bring the device close to the product to re-pair. If unsuccessful, repeat the process multiple times.

Distance Disconnection Method

Move the product away from the currently paired device, once the distance exceeds the effective range, the connection will automatically disconnect.

You can then reconnect using your own phone.

Note: It is recommended to try(1)first. If it fails, proceed with(2).

Click the scene button to enter the scene interface

Click the scene button to enter the scene interface

Click the scene button to enter the scene interface

Click the scene button to enter the scene interface

Click the scene button to enter the scene interface

Click the scene button to enter the scene interface

Click the scene button to enter the scene interface

Click the scene button to enter the scene interface

Click the scene button to enter the scene interface

Click the scene button to enter the scene interface

Click the scene button to enter the scene interface

Click the scene button to enter the scene interface

Click the scene button to enter the scene interface

Click the scene button to enter the scene interface

Click the scene button to enter the scene interface

Click the scene button to enter the scene interface

Click the scene button to enter the scene interface

Click the scene button to enter the scene interface

Click the scene button to enter the scene interface

Click the scene button to enter the scene interface

Click the scene button to enter the scene interface

Click the scene button to enter the scene interface

Click the scene button to enter the scene interface

Click the scene button to enter the scene interface

Click the scene button to enter the scene interface

Click the scene button to enter the scene interface

Click the scene button to enter the scene interface

Click the scene button to enter the scene interface

### 7. Lighting scene setting screen

Click on the picture to set the corresponding lighting scene

Feel free to set the time in the alarm function according to your own ideas, then the time automatically turns on or off.

Enable or disable the schedule of lights is turned on

Time setting of lights start

Enable or disable the schedule of lights is turned off

Time setting of lights ends

Disconnect the device's power supply and open the mobile app. Bring the device close to the product to re-pair. If unsuccessful, repeat the process multiple times.

Distance Disconnection Method

Move the product away from the currently paired device, once the distance exceeds the effective range, the connection will automatically disconnect.

You can then reconnect using your own phone.

Note: It is recommended to try(1)first. If it fails, proceed with(2).

Click the scene button to enter the scene interface

Click the scene button to enter the scene interface

Click the scene button to enter the scene interface

Click the scene button to enter the scene interface

Click the scene button to enter the scene interface

Click the scene button to enter the scene interface

Click the scene button to enter the scene interface

Click the scene button to enter the scene interface

Click the scene button to enter the scene interface

Click the scene button to enter the scene interface

Click the scene button to enter the scene interface

Click the scene button to enter the scene interface

Click the scene button to enter the scene interface

Click the scene button to enter the scene interface

Click the scene button to enter the scene interface

Click the scene button to enter the scene interface

Click the scene button to enter the scene interface

Click the scene button to enter the scene interface

Click the scene button to enter the scene interface

Click the scene button to enter the scene interface

Click the scene button to enter the scene interface

Click the scene button to enter the scene interface

Click the scene button to enter the scene interface

Click the scene button to enter the scene interface

Click the scene button to enter the scene interface

Click the scene button to enter the scene interface

Click the scene button to enter the scene interface

Click the scene button to enter the scene interface

Click the scene button to enter the scene interface

### 8. Timing Function

Click on the picture to set the corresponding lighting scene

Feel free to set the time in the alarm function according to your own ideas, then the time automatically turns on or off.

Enable or disable the schedule of lights is turned on

Time setting of lights start

Enable or disable the schedule of lights is turned off

Time setting of lights ends

Disconnect the device's power supply and open the mobile app. Bring the device close to the product to re-pair. If unsuccessful, repeat the process multiple times.

Distance Disconnection Method

Move the product away from the currently paired device, once the distance exceeds the effective range, the connection will automatically disconnect.

You can then reconnect using your own phone.

Note: It is recommended to try(1)first. If it fails, proceed with(2).

Click the scene button to enter the scene interface

Click the scene button to enter the scene interface

Click the scene button to enter the scene interface

Click the scene button to enter the scene interface

Click the scene button to enter the scene interface

Click the scene button to enter the scene interface

Click the scene button to enter the scene interface

Click the scene button to enter the scene interface

Click the scene button to enter the scene interface

Click the scene button to enter the scene interface

Click the scene button to enter the scene interface

Click the scene button to enter the scene interface

Click the scene button to enter the scene interface

Click the scene button to enter the scene interface

Click the scene button to enter the scene interface

Click the scene button to enter the scene interface

Click the scene button to enter the scene interface

Click the scene button to enter the scene interface

Click the scene button to enter the scene interface

Click the scene button to enter the scene interface

Click the scene button to enter the scene interface

Click the scene button to enter the scene interface

Click the scene button to enter the scene interface

Click the scene button to enter the scene interface

Click the scene button to enter the scene interface

Click the scene button to enter the scene interface

Click the scene button to enter the scene interface

Click the scene button to enter the scene interface

Click the scene button to enter the scene interface

### 9. Edit Device Information

Click on the picture to set the corresponding lighting scene

Feel free to set the time in the alarm function according to your own ideas, then the time automatically turns on or off.

Enable or disable the schedule of lights is turned on

Time setting of lights start

Enable or disable the schedule of lights is turned off

Time setting of lights ends

Disconnect the device's power supply and open the mobile app. Bring the device close to the product to re-pair. If unsuccessful, repeat the process multiple times.

Distance Disconnection Method

Move the product away from the currently paired device, once the distance exceeds the effective range, the connection will automatically disconnect.

You can then reconnect using your own phone.

Note: It is recommended to try(1)first. If it fails, proceed with(2).

Click the scene button to enter the scene interface

Click the scene button to enter the scene interface

Click the scene button to enter the scene interface

Click the scene button to enter the scene interface

Click the scene button to enter the scene interface

Click the scene button to enter the scene interface

Click the scene button to enter the scene interface

Click the scene button to enter the scene interface

Click the scene button to enter the scene interface

Click the scene button to enter the scene interface

Click the scene button to enter the scene interface

Click the scene button to enter the scene interface

Click the scene button to enter the scene interface

Click the scene button to enter the scene interface

Click the scene button to enter the scene interface

Click the scene button to enter the scene interface

Click the scene button to enter the scene interface

Click the scene button to enter the scene interface

Click the scene button to enter the scene interface

Click the scene button to enter the scene interface

Click the scene button to enter the scene interface

Click the scene button to enter the scene interface

Click the scene button to enter the scene interface

Click the scene button to enter the scene interface

Click the scene button to enter the scene interface

Click the scene button to enter the scene interface

Click the scene button to enter the scene interface

Click the scene button to enter the scene interface

Click the scene button to enter the scene interface

### Fault Description

1. The colors of the light are disordered in red, green, and blue. Follow the steps below.

1) Click Edit Device Information → Wires Order.

2) Switch the RGB order until the red, green and blue colors are consistent with the current light display

2. Some lights on the light are not functioning. There are two solutions to this issue.

1) Click Edit Device Information → Pixel Setting. Manually set the above value to 39.

2) Factory reset: Unplug the power supply → Power on again → Press and hold the "A" button on the touchpad panel for 5 seconds. After that, you can do a factory reset.

3. If the device switches automatically or behaves abnormally, try the following solutions:

1) Reset Connection

Disconnect the device's power supply and open the mobile app. Bring the device close to the product to re-pair. If unsuccessful, repeat the process multiple times.

2) Distance Disconnection Method

Move the product away from the currently paired device, once the distance exceeds the effective range, the connection will automatically disconnect.

You can then reconnect using your own phone.

Note: It is recommended to try(1)first. If it fails, proceed with(2).

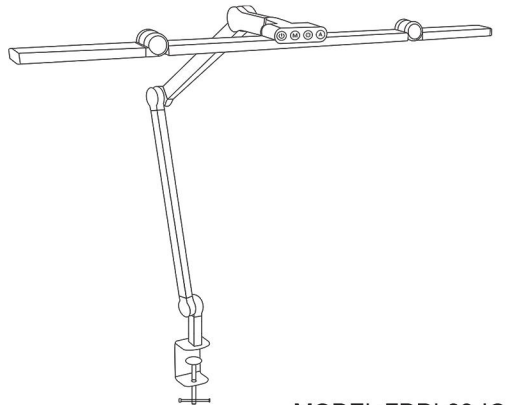
Click the scene button to enter the scene interface

Click the scene button to enter the scene interface

Click the scene button to enter the scene interface

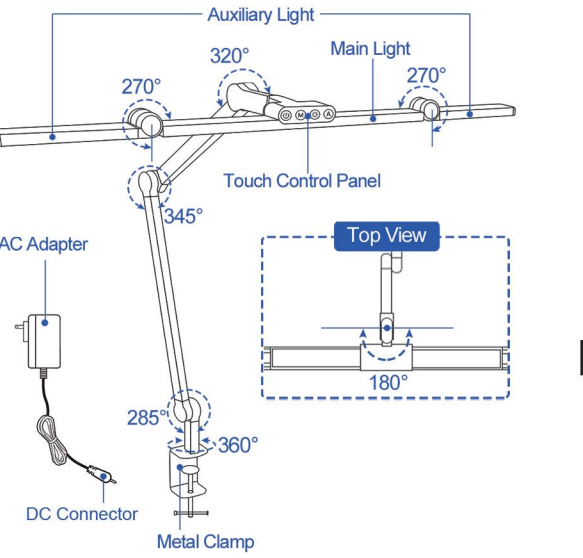
# Welcome Guide

## RGB+IC Desk Lamp



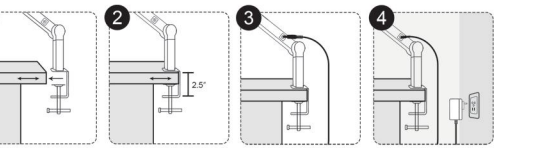
MODEL:FDDL03-IC

### Flexible Rotatable Office Lamp



### Installation Guide

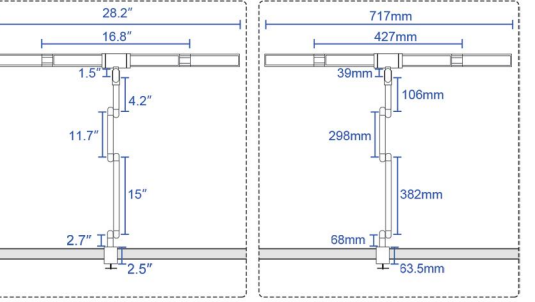
1. Install the clip in a suitable area.
2. Attach the clamp to the edge of your desk and then firmly secure the screw. The thickness of tabletop should not exceed 2.5"
3. Connect the supplied adapter to the desk lamp.
4. Plug the AC adapter into the power socket.



### Specifications

|        |                     |
|--------|---------------------|
| Model  | FDDL03-IC           |
| Power  | 21W                 |
| CCT    | 3000-6500K & RGB+IC |
| Output | 12V2A               |
| Input  | 100-240V~50/60Hz    |

### Lamp Size



### Attention

1. Keep the lamp away from heat sources.
2. Do not immerse appliance, cords or plugs in water or other liquid to avoid electric shock;
3. Do not look at the LEDs directly to avoid damage to eyes;
4. Please do not remove the power plug with wet hands as it may cause electrical shock,
5. Any repairs to this appliance should be carried out by a qualified service person;
6. Under no circumstances should this appliance be modified.

### Touch Control Panel



|                  |   |
|------------------|---|
| Click            | Single click to enter white light mode (controls On/Off)  |
| Long Press       | Long press to activate RGB dynamic color mode (controls On/Off)<br>White light/rainbow light cannot be turned on simultaneously   |
| White Light Mode | In white light mode, clicking the button allows adjustment of 5 levels of color temperature. (3000k-3500k-4000k-5000k-6500k)  |
| RGB+IC Mode      | In RGB+IC mode, clicking the button allows adjustment of 21 levels of light modes.  |
| White Light Mode | In white light mode, click the button to adjust ten levels of brightness (10%-20%-30%-40%-50%-60%-70%-80%-90%-100%)   |
| RGB+IC Mode      | In RGB+IC mode, click the button to adjust ten speeds (10%-20%-30%-40%-50%-60%-70%-80%-90%-100%)  |
| White Light Mode | In white light mode, press the button to set the timer for 30 min; the blue indicator light will remain on. Press again to cancel the timer, the blue indicator light will turn off   |
| RGB+IC Mode      | The microphone on the lamp captures surrounding music, allowing the lighting to change with the rhythm; there are 8 modes available for looping playback. When the Device MIC or Phone MIC or Music functions on the app are activated, Similarly, Clicking the button has 8 modes available for looping playback |
| MIC              | Audio input sensor for sound detection and reception  |
| Indicator Light  | It will light up after the timer is set, and it will be blue when illuminated   |

### APP control

#### 1. Download App

LED light take complete control of your lighting with smartphone, before you use the App to control the Lights, Please search for and install the application in Google play or Apple store or also scan the QR code in manual.

APP name is " LotusLamp X", The APP icon is:

- Secure Connection Recommendations
- For first-time use, complete the following steps:
1. Download the official app.
  2. Complete the initial pairing connection (to prevent unauthorized access by others).

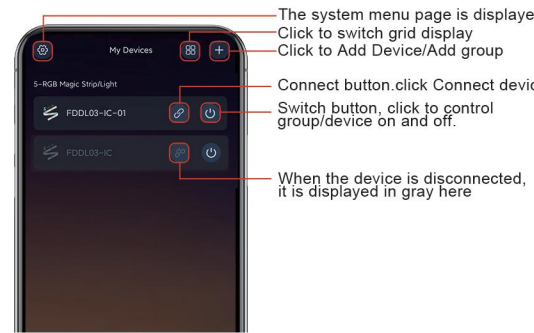


Scan the QR code in manual to download App

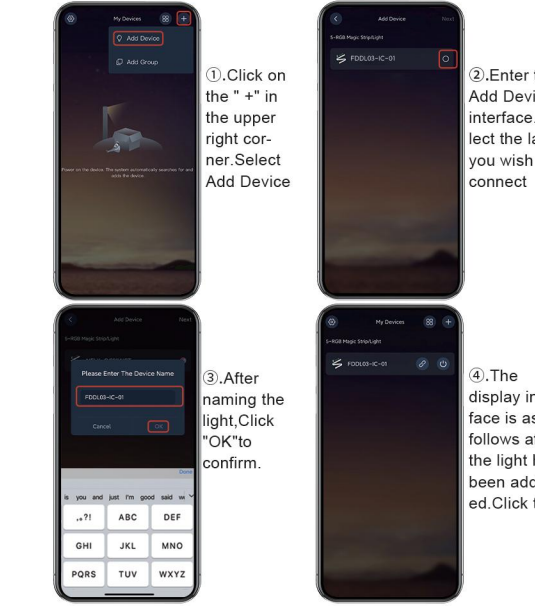
#### 2.App connection operation

- Step1: Turn on Bluetooth.
- Step2: Open the APP.
- Step3: Open the light.
- Step4: Then light automatically connect to the APP. The default interface is displayed for the first time after the APP is installed. After you power on the APP, the system automatically searches for and adds the light.

Attention: This light supports connection to only one mobile phone at a time. Please disconnect the current mobile phone before connecting another one.



If the light doesn't automatically connect to the app, please refer to the following steps for manual connection.



FCC Caution.

This device complies with part 15 of the FCC Rules. Operation is subject to the following two conditions:

- (1) This device may not cause harmful interference, and
- (2) this device must accept any interference received, including interference that may cause undesired operation.

Any Changes or modifications not expressly approved by the party responsible for compliance could void the user's authority to operate the equipment.

Note: This equipment has been tested and found to comply with the limits for a Class B digital device, pursuant to part 15 of the FCC Rules. These limits are designed to provide reasonable protection against harmful interference in a residential installation. This equipment generates uses and can radiate radio frequency energy and, if not installed and used in accordance with the instructions, may cause harmful interference to radio communications. However, there is no guarantee that interference will not occur in a particular installation. If this equipment does cause harmful interference to radio or television reception, which can be determined by turning the equipment off and on, the user is encouraged to try to correct the interference by one or more of the following measures:

- Reorient or relocate the receiving antenna.
- Increase the separation between the equipment and receiver.
- Connect the equipment into an outlet on a circuit different from that to which the receiver is connected.
- Consult the dealer or an experienced radio/TV technician for help.

FCC Radiation Exposure Statement:

The device has been evaluated to meet general RF exposure requirement. The device can be used in portable exposure condition without restriction.