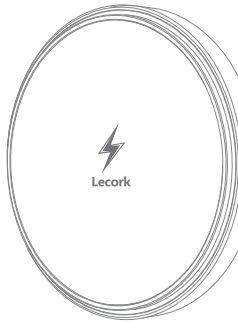


说明书尺寸: 65x85mm
80 克双铜纸 双面印刷

Lecork



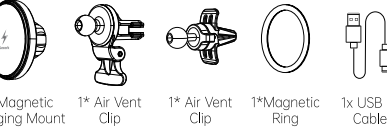
Magnetic Wireless
Car Charger

Catalogue

- 1, Product Introduction
- 1, Specifications
- 2, Product Overview
- 3, Using Instruction
- 4, Installation Guide
- 6, How to make it work well?
- 7, Warranty
- 8, FAQ

Note: Thanks for choosing Lecork.
Please read the user manual carefully before using!
Conact us via support@lecork.tech

Package Includes



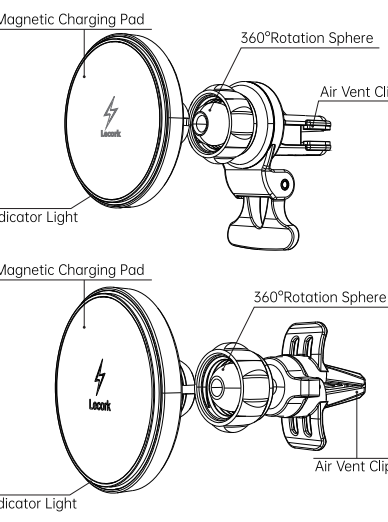
Specification

Model: CW201
Name: Magnetic Car Wireless Charging Phone Holder
Material: PC+ABS+Tempered Glass
Input: 5V==2A, 9V==2A ;
Wireless Charging Output:15W (Max)
Conversion Rute: About 80%
Induction Distance: ≤20mm
Manufacturer: Shenzhenshi ZeYiTong E-commerce Co., Ltd
Address : 608A, 6/F, Building 1, Bantian Huizhigu Innovation Industrial Park, Bantian Street, Longgang District, Shenzhen, China
Contact Information: +8619866672673

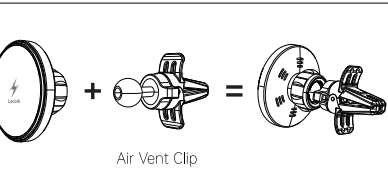
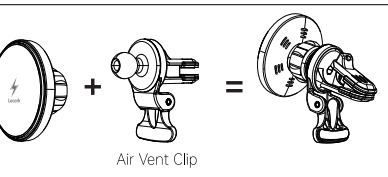
Indicator Light

Charging	green light on	
standby	red light on	
full	green light flashing	
FOD	red light flashing	

Product Overview

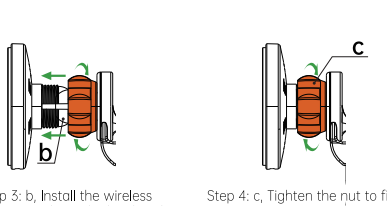
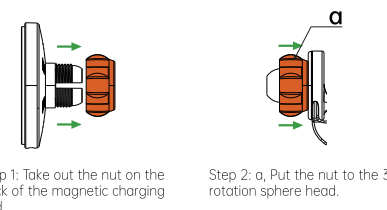


Using Instruction

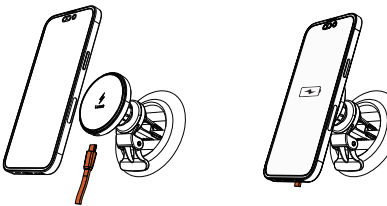
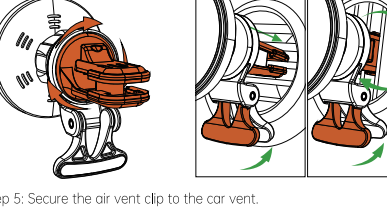


Note: We provide with two different air vent clips for your versativity needs. You can choose the best one to fix the car charger according to the design of your car vent.

Installation Guide



How to make it work well?



Warranty

We provide 1-year warranty service. Please feel free to contact us via support@lecork.tech if you have any problems or suggestions with our products. We provide you with the free return and exchange services.



This symbol indicates that this product should not be disposed of as household waste, but rather handed over to the appropriate collection point for recycling of electronic and electrical equipment.

FAQ

1: Why doesn't this charger work?

- 1) Make sure your phone support wireless charging function
- 2) Use the cable came in the package to connect to power.
- 3) The thickness of the phone case does not exceed 4mm.
- 4) Make sure there is no metal material, magnetic objects, credit cards or pop holders on the back of your phone between the phone and the phone case.
- 5) If the charger's indicator does not light up after connecting the power supply, please contact us directly.

2: How to prevent your phone fell off from the magnetic car charger?

- 1) We suggest you use the magnetic phone case for better fix your phone to the car charger pannel.
- 2) If you don't have a magnetic phone case, please take off the phone case and attach your phone to the magnetic car charger panel directly.

3: Why not fast charging or not charging?

- 1) Please use the PD 3.0 or QC3.0 car charger as its power source.

4: How to prevent your phone from over-heating?

- 1) We suggest you close Apps to reduce power consumption and turn off phone screen during wireless charging.

Warranty Card

Name

Contact Address

Contact Information

Order Number

Problem Description

This device complies with Part 15 of the FCC rules. Operation is subject to the following two conditions: 1) this device may not cause harmful interference, and 2) this device must accept any interference received, including interference that may cause undesired operation.

Note: This equipment has been tested and found to comply with the limits for a Class B digital device, pursuant to part 15 of the FCC Rules. These limits are designed to provide reasonable protection against harmful interference in a residential installation.

This equipment generates uses and can radiate radio frequency energy and, if not installed and used in accordance with the instructions, may cause harmful interference to radio communications. However, there is no guarantee that interference will not occur in particular installation. If this equipment does cause harmful interference to radio or television reception, which can be determined by turning the equipment off and on, the user is encouraged to try to correct the interference by one or more of the following measures:

- Reorient or relocate the receiving antenna.
- Increase the separation between the equipment and receiver.
- Connect the equipment into an outlet on a circuit different from that to which the receiver is connected.
- Consult the dealer or an experienced radio/TV technician for help.

Changes or modifications not expressly approved by the party responsible for compliance could void the user's authority to operate the equipment.

Radiation Exposure Statement

This device complies with FCC RF radiation exposure limits set forth for an uncontrolled environment.

The FCC certification of this device refers to RF exposure testing performed in typical operating conditions, where a person is no closer than 20 centimeters from the device surface at all times, except for non-repetitive patterns with transient time intervals in the order of a second. Only in the stated conditions, the device is shown to fully comply with the FCC RF Exposure requirements of KDB 447498.