

Smart Bulb Light

FCC ID: 2BKDS-XLD-WIFI-A19
User Manual



Alexa, turn on light



WORKS WITH
alexa



WORKS WITH
Google



Download "Smart Life" app



iOS

Download on the
APP Store



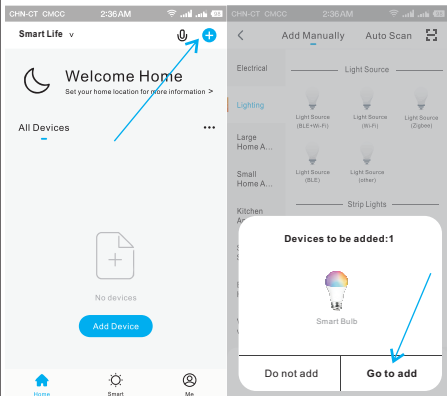
Get it on
Google Play

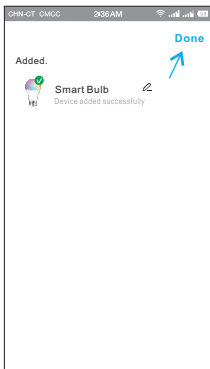
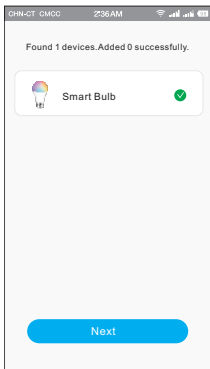
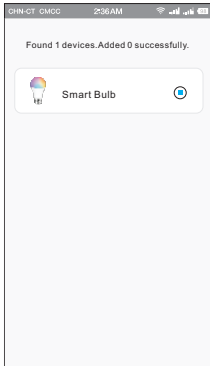
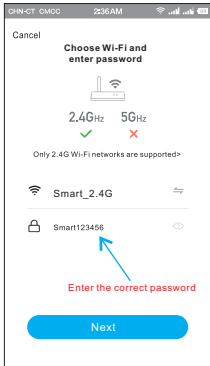
Register an account and choose your country.

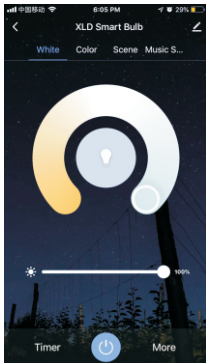
Connect your phone to WiFi(Only 2.4Ghz)

Adjust the bulb to blink

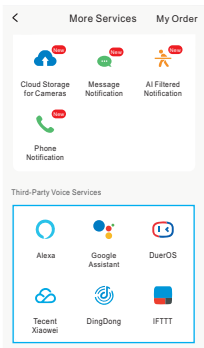
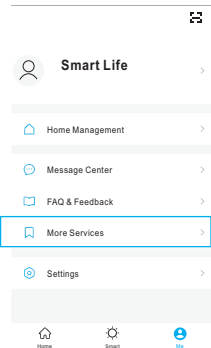
Turn on/off 3 times(on/off/on/off/on)

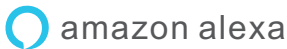






Connect to Alexa / Google Home





Binding your app account to your Amazon account allows you to control Alexa-enabled devices through Amazon Echo speakers(ex. "Alexa,turn on light.")

Sign In With Amazon

FAQ&Feedback

- 1.Only support 2.4GHz, not 5GHz.
- 2.The distance between the device and the router should not be too far away, which will affect the Wi-Fi signal.
- 3.Make sure the Wi-Fi password is entered correctly,just English and Numbers.
- 4.If the connection fails, please set the router safety factor to the lowest.
- 5.If the connection fails, try sharing the access point with another phone instead of the router's Wi-Fi. This method can help us determine if the Wi-Fi signal from the router is compatible with this product.

6. When the device is connected correctly, don't remove it; otherwise, it will be restored to factory settings and cannot be controlled directly.
7. If the device is offline and can't be controlled, check if the Wi-Fi is off, turn off some other connected devices, the router may be overloaded, update the application interface.
8. If you change the Wi-Fi password, please reconnect. When restoring factory settings, you must turn off the lamp for 10 seconds and then try again.

12-month quality guarantee

Connection failure or other problems are often caused by poor compatibility between the router and the mobile phone, please contact us, we have professional technicians to help you solve it, after we help you solve the problem, please give us a positive evaluation, we need your affirmation and encouragement, Thank you.

FCC STATEMENT

1. This device complies with Part 15 of the FCC Rules. Operation is subject to the following two conditions:

- (1) This device may not cause harmful interference, and
- (2) This device must accept any interference received, including interference that may cause undesired operation.

2. Changes or modifications not expressly approved by the party responsible for compliance could void the user's authority to operate the equipment.

This equipment has been tested and found to comply with the limits for a Class B digital device, pursuant to part 15 of the FCC Rules. These limits are designed to provide reasonable protection against harmful interference in a residential installation. This equipment generates, uses and can radiate radio frequency energy and, if not installed and used in accordance with the instructions, may cause harmful interference to radio communications. However, there is no guarantee that interference will not occur in a particular installation. If this equipment does cause harmful interference to radio or television reception, which can be determined by turning the equipment off and on, the user is encouraged to try to correct the interference by one or more of the following measures:

- Reorient or relocate the receiving antenna.
- Increase the separation between the equipment and receiver.
- Connect the equipment into an outlet on a circuit different from that to which the receiver is connected
- Consult the dealer or an experienced radio/ TV technician for help.

FCC Radiation Exposure Statement:

This equipment complies with FCC radiation exposure limits set forth for an uncontrolled environment. In order to avoid the possibility of exceeding the FCC radio frequency exposure limits, Human proximity to the antenna shall not be less than 20cm (8 inches) during normal operation.