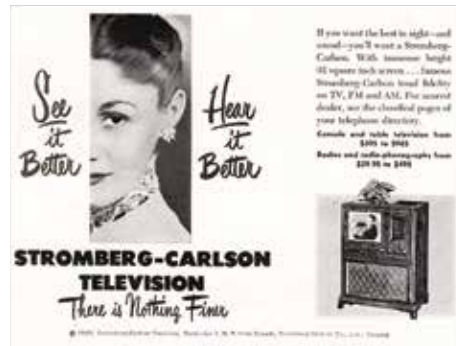


LET'S PARTY WITH THIS PLAYLIST



WHO WE ARE

Stromberg Carlson was founded by Alfred Stromberg and Androv Carlson in 1894, in Chicago, USA. They quickly established a reputation for creating durable products of high technological quality. Continuing this legacy of over a century is our mission.



WARRANTY & SERVICE

SCAN THE QR CODE TO ACCESS THE
WARRANTY AND CONTACT
TECHNICAL SUPPORT.



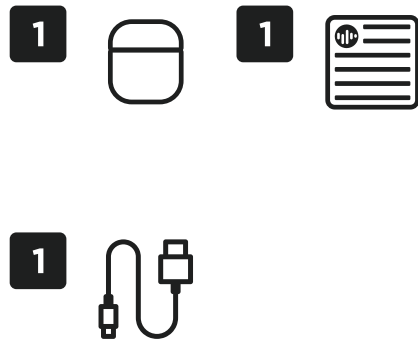
stromberg.world/pages/warranty

STROMBERG

DUAL-PRO 2



WHAT'S IN THE BOX



CONTROL PANEL



Smart touch:

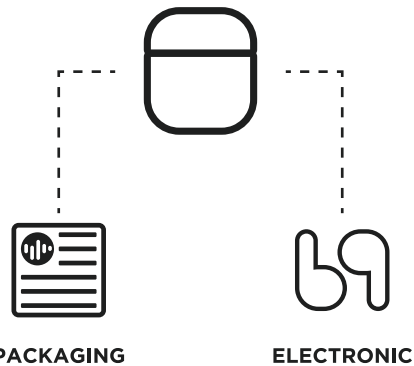
Both
-1 touch: Play/Pause
-Hold 2": Off

Left earbud:
-Hold: Volume down
-Touch twice: previous

Right earbud:
-Hold: Volume up
-Touch twice: next

During phone call:
-Touch to answer
-Hold 2" to reject
-Hold 1" to hang up

HOW TO RECYCLE



HOW TO CARE



FCC Statement

This equipment has been tested and found to comply with the limits for a Class B digital device, pursuant to part 15 of the FCC Rules. These limits are designed to provide reasonable protection against harmful interference in a residential installation. This equipment generates, uses and can radiate radio frequency energy and, if not installed and used in accordance with the instructions, may cause harmful interference to radio communications. However, there is no guarantee that interference will not occur in a particular installation. If this equipment does cause harmful interference to radio or television reception, which can be determined by turning the equipment off and on, the user is encouraged to try to correct the interference by one or more of the following measures:

- *Reorient or relocate the receiving antenna.

- *Increase the separation between the equipment and receiver.

- *Connect the equipment into an outlet on a circuit different from that to which the receiver is connected.

- *Consult the dealer or an experienced radio/TV technician for help.

Caution: Any changes or modifications to this device not explicitly approved by manufacturer could void your authority to operate this equipment.

This device complies with part 15 of the FCC Rules. Operation is subject to the following two conditions: (1) This device may not cause harmful interference, and (2) this device must accept any interference received, including interference that may cause undesired operation.

RF Exposure Information

The device has been evaluated to meet general RF exposure requirement.

The device can be used in 0mm exposure condition, compliance with exposure requirements.

Only in the stated conditions, the device is shown to fully comply with the FCC RF Exposure requirements of KDB 447498.