



## 3S PRO Inch Smart Screen Player

### User Manual



**⚠** Please note that this product may update without prior notice.  
If you have any question while using this product, please contact us:  
**SUPPORT@VUDDIG.COM**

## **FCC WARNING**

This device complies with part 15 of the FCC Rules. Operation is subject to the following two conditions: (1) this device may not cause harmful interference, and (2) this device must accept any interference received, including interference that may cause undesired operation.

Any changes or modifications not expressly approved by the party responsible for compliance could void the user's authority to operate the equipment.

NOTE: This equipment has been tested and found to comply with the limits for a Class B digital device, pursuant to Part 15 of the FCC Rules. These limits are designed to provide reasonable protection against harmful interference in a residential installation. This equipment generates, uses and can radiate radio frequency energy and, if not installed and used in accordance with the instructions, may cause harmful interference to radio communications.

However, there is no guarantee that interference will not occur in a particular installation. If this equipment does cause harmful interference to radio or television reception, which can be determined by turning the equipment off and on, the user is encouraged to try to correct the interference by one or more of the following measures:

- Reorient or relocate the receiving antenna.
- Increase the separation between the equipment and receiver.
- Connect the equipment into an outlet on a circuit different from that to which the receiver is connected.
- Consult the dealer or an experienced radio/TV technician for help.

To maintain compliance with FCC's RF Exposure guidelines, This equipment should be installed and operated with minimum 20cm distance between the radiator and your body: Use only the supplied antenna.

## Table of Contents

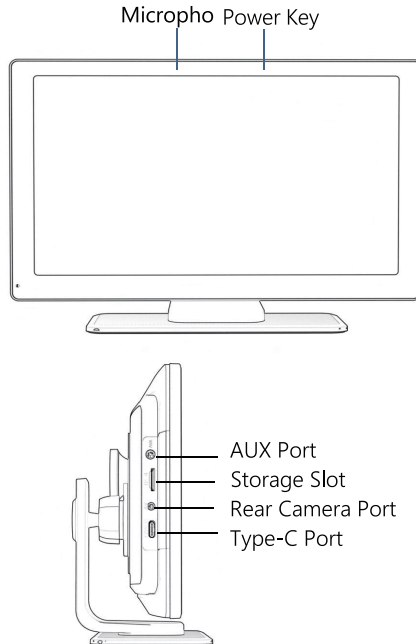
1. Product Overview.....	-2-
2. Product Accessories.....	-3-
3. Wiring Instructions.....	-4-
4. Rear Camera Installation.....	-5-
5. Interface Specifications.....	-6-
6. CarPlay.....	-7-
7. Android Auto.....	-9-
8. AirPlay.....	-11-
9. Miracast.....	-12-
10. WIFI Video.....	-13-
11. BT Music.....	-15-
12. Car Recording.....	-16-
13. Playback.....	-17-
14. Audio Out.....	-18-
15. Settings.....	-19-
16. Troubleshooting.....	-22-
17. Reversing Line Calibration.....	-24-
18. Product Parameters.....	-25-
19.Customer Service.....	-26-









## 1.Product Overview

The 3S PRO utilizes cameras installed inside and outside the vehicle to capture images of the surrounding area and transmit them in real-time to the integrated device.

With the help of this system, drivers can see obstacles and pedestrians in front of and behind the vehicle.

This product can record every detail of the driver's driving process to avoid accident fraud; This product can easily connect your phone and project part of the application to the device screen to provide a larger screen for navigation and a better connection for mobile multimedia and car audio.



Name	Image	Description	Quantity
Main Unit		9" Full HD display (1600*600)	1
Power Cable		Type power cable / 7V~32V / 3A current / Integrated cable / Cigarette lighter power supply	1
Rear Camera		AHD FHD (1080P)/4PIN BMW	1
Extension Cable		Retractable headset / 6 meters / 2.5mm headphone + 4-pin BMW headset / Double-shielded / With reversible connector	1
Monitoring Base		Supports the display and fixes it on the center console	1
TF Card		64G	1
Mount Tool		Install the Extension Cable	1
Dust Free Cloth		Clean the Screen	1

### 3.Wiring Instructions



Details are listed below:

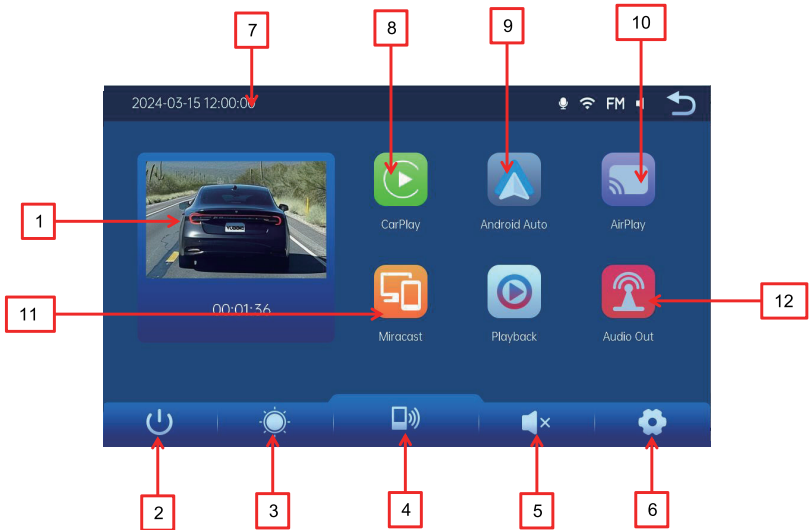
Interface	Description
Type C	Display Power Interface
Cigarette Lighter	<p>Direct power supply from the cigarette lighter</p> <p>Note: This product comes with a cigarette lighter charger as standard.</p> <p>If you do not use the original charger, you need to purchase a higher quality charger. Otherwise, it may damage the machine or cause other damage.</p>

## 4.Rear Camera Installation

Determine the drilling position, find a suitable installation position in the license plate accessories, mark it with a pen, and then drill screw holes of appropriate size. Use screws to fix the camera to the rear of the vehicle, the reversing trigger line (red thin line) needs to be connected to the positive pole of the reversing light, and finally connect the camera extension cable to the monitor.



## 5. Interface Specifications



- |                               |                                |
|-------------------------------|--------------------------------|
| 1. Camera Interface           | 2. Turn Off Screen             |
| 3. Adjust Brightness          | 4. Mobile Connection Interface |
| 5. Adjust Volume              | 6. Settings Interface          |
| 7. Time Interface             | 8. iPhone Specific Connector   |
| 9. Android Specific Connector | 10. iPhone Screen Projection   |
| 11. Android Screen Projection | 12. Audio Out Interface        |



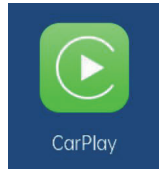
## 6.CarPlay

**Start the CarPlay System:** First, ensure that your CarPlay system is powered on and ready to connect external devices.

**Find the CarPlay Option:** On the main interface, look for and click the [CarPlay] button.

### Bluetooth Connection:

1. Enter the CarPlay connection interface, find and click [Bluetooth Management];
2. In the Bluetooth management interface, ensure the CarPlay system's Bluetooth function is turned on;
3. On your iPhone, turn on Bluetooth and search for available devices;
4. Select your CarPlay system's Bluetooth name from the list of detected devices;
5. Follow the on-screen prompts to complete the Bluetooth pairing process;
6. Once paired successfully, the phone will automatically connect to the car system hotspot and enter the interconnection interface.



### Automatic Connection Settings:

Once the Bluetooth connection is successful, the CarPlay system will usually remember this connection and attempt to automatically connect to your iPhone the next time it is started;

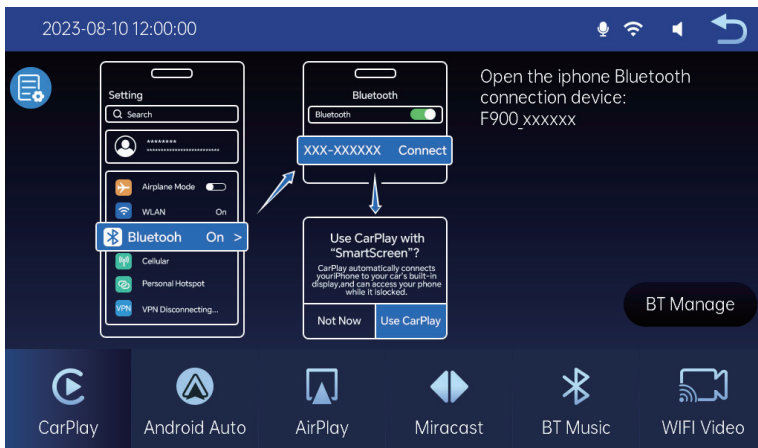
If necessary, you can further configure automatic connection options in the settings of the CarPlay system or iPhone.

### Using CarPlay:

Once connected, your iPhone screen will be mirrored on the CarPlay display, allowing you to use CarPlay to access apps like maps, music, and phone. You can easily control these apps via the CarPlay touch screen.

## Notes:

1. CarPlay is designed specifically for iPhone and does not support Android phones. If your phone is an Android device, you can use [Android Auto] for mirroring.
2. Ensure your iPhone is updated to the latest version for optimal compatibility and functionality.
3. To disconnect in low-power mode, first click to turn off Bluetooth, then click to turn off WiFi. Simply turning off the WiFi button will keep the car attempting to disconnect.



## 7. Android Auto

**Start the Android Auto System :** First, ensure that your Android Auto system is powered on and ready to connect external devices.

**Find the Android Auto Option :** On the main interface, look for and click the [Android Auto] button.

### Bluetooth Connection:

1. Enter the Android Auto connection interface, find and click [Bluetooth Management];
2. In the Bluetooth management interface, ensure the Android Auto system's Bluetooth function is turned on;
3. On your Phone, turn on Bluetooth and search for available devices;
4. Select your Android Auto system's Bluetooth name from the list of detected devices;
5. Follow the on-screen prompts to complete the Bluetooth pairing process;
6. Once paired successfully, the phone will automatically connect to the car system hotspot and enter the interconnection interface.



### Automatic Connection Settings:

Once the Bluetooth connection is successful, the Android Auto system will usually remember this connection and attempt to automatically connect to your Phone the next time it is started;

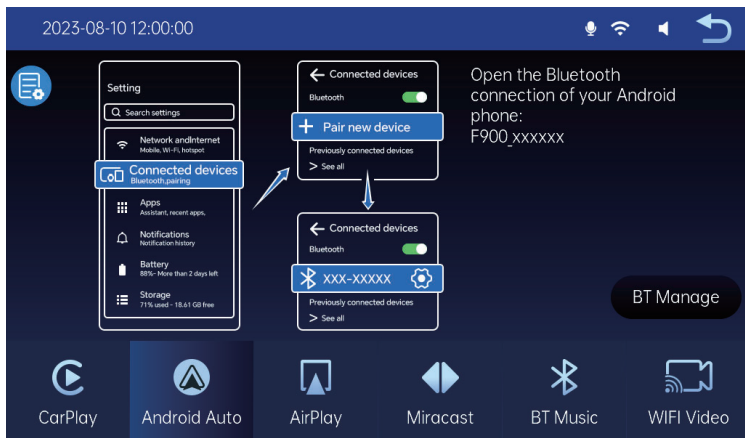
If necessary, you can further configure automatic connection options in the settings of the Android Auto system or Phone.

### Using Android Auto:

Once connected, your Phone screen will be mirrored on the Android Auto display, allowing you to use Android Auto to access apps like maps, music, and phone. You can easily control these apps via the Android Auto touch screen.

### Notes:

1. Android Auto is designed specifically for Android phones and does not support iPhone . If your phone is an iPhone , you can use [ CarPlay] for mirroring.
2. Ensure your Phone is updated to the latest version for optimal compatibility and functionality.
3. To disconnect in low-power mode, first click to turn off Bluetooth, then click to turn off WiFi. Simply turning off the WiFi button will keep the car attempting to disconnect.



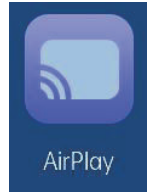
## 8.AirPlay

**Start the AirPlay System :** First, ensure your AirPlay system is powered on and ready to connect external devices.

**Find the AirPlay Option :** On the main interface, look for and click the [AirPlay] button.

### WiFi Connection:

1. Enter the AirPlay connection interface and find the WiFi name and password;
2. On your phone, turn on WiFi and find the 3S PRO WiFi, and connect to it;
3. Once connected, enter the screen mirroring function on your phone and click to connect to the 3SPRO device;
4. After pairing successfully, enter the mirroring interface.



### Using AirPlay:

Once connected, your phone screen will be mirrored on the 3S PRO display, allowing you to showcase all your phone content on the 3S PRO.

### Notes:

1. AirPlay is designed specifically for iPhone and does not support Android phones. If your phone is an Android device, you can use Miracast for mirroring.
2. Ensure your phone is updated to the latest version for optimal compatibility and functionality;
3. Turn off the phone's WiFi function to disconnect.



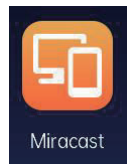
## 9.Miracast

**Starting the In-Car System:** First, ensure that your in-car system is powered on and in a state ready to connect to external devices.

**Locating the Miracast Option:** On the main interface, locate and click the [Miracast] button.

**Connecting Phone for Screen Mirroring:**

1. Once in the Miracast connection interface, enable screen mirroring on your phone;
2. In your phone's settings, find "More Connections" and enable screen mirroring;
3. Wait for 3SPRO to be detected, then click to connect;
4. Upon successful pairing, enter the screen mirroring interface.

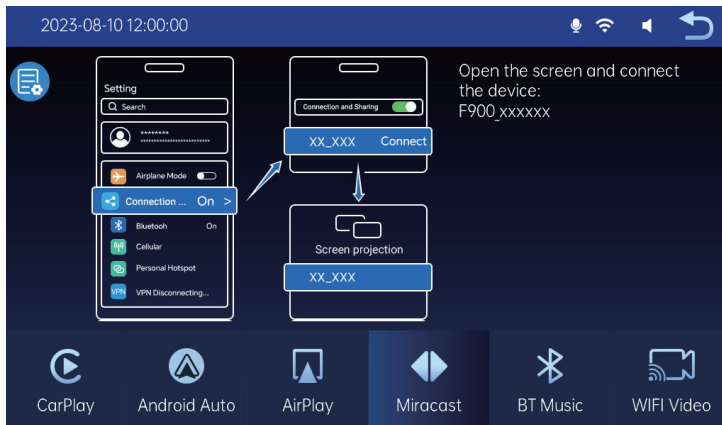


**Using Miracast:**

Once connected, your phone screen will mirror to the 3SPRO display, allowing you to display all content from your phone on the 3SPRO.

### Notes:

1. Miracast is designed specifically for Android devices and does not support iPhones. For iPhones, use AirPlay for screen mirroring.
2. Ensure your phones are updated to the lastest versions for optimal compatibility and functionality;
3. To disconnect, simply disable Wi-Fi on your phone.



## 10.WIFI Video

**Starting the In-Car System:** First, ensure that your in-car system is powered on and in a state ready to connect to external devices.

**Locating the WIFI Video Option:** On the CarPlay/Android Auto interface, locate and click the [WIFI Video] button.

### Connecting Phone App:

1. Scan the QR code to download the corresponding app;
2. Follow the APP prompts to open the phone WiFi,  
3SPRO WiFi will automatically open;
3. Connect WiFi, WiFi name:  
(as prompted on the WIFI Video page)  
password: 12345678;
4. After successful pairing, enter the app interface.

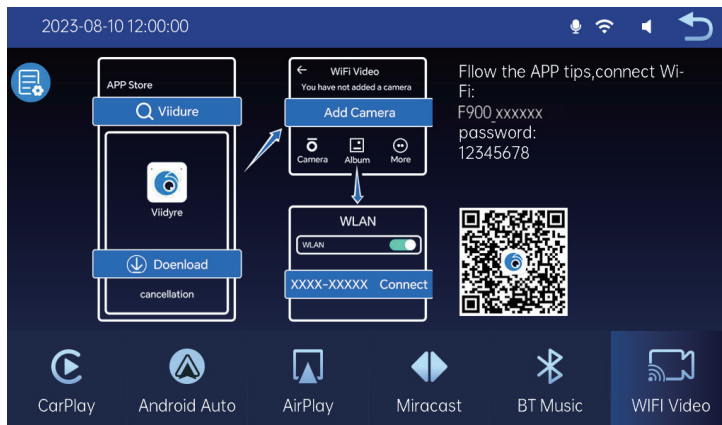


### Using WIFI Video:

Once connected, you can view real-time video, playback and download historical videos, and share videos to your social media through the app;

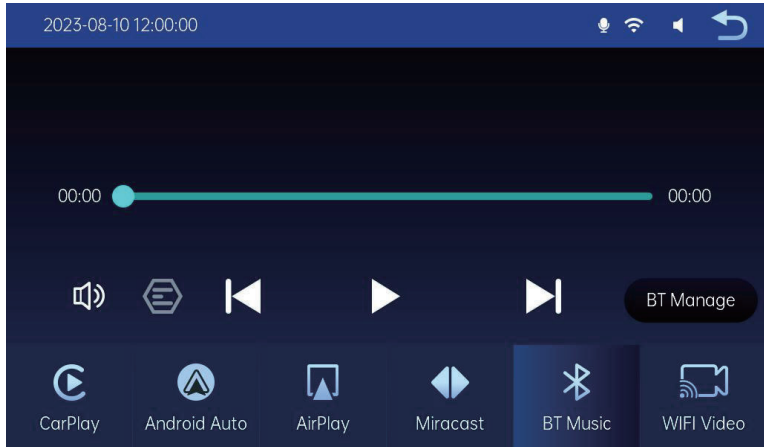
### Notes:



1. Ensure your phones are updated to the latest versions for optimal compatibility and functionality;
2. To disconnect, simply disable Wi-Fi on your phone.





## 11.BT Music

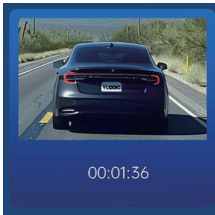


Buttons correspond to  "Previous",  "Play/Pause" and  "Next"

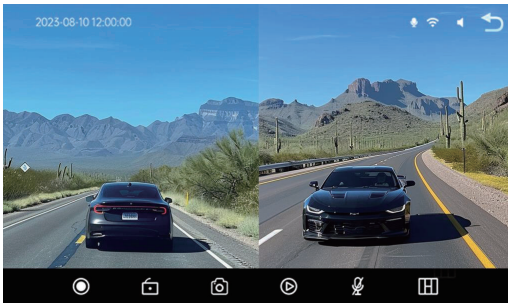
Click the Lyrics button  to display song lyrics.

**Note:** Some mobile music player apps do not support displaying lyrics.

## 12.Reverse Trigger

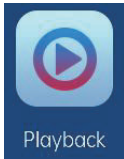


Click the camera icon on the main interface to view real-time camera images.

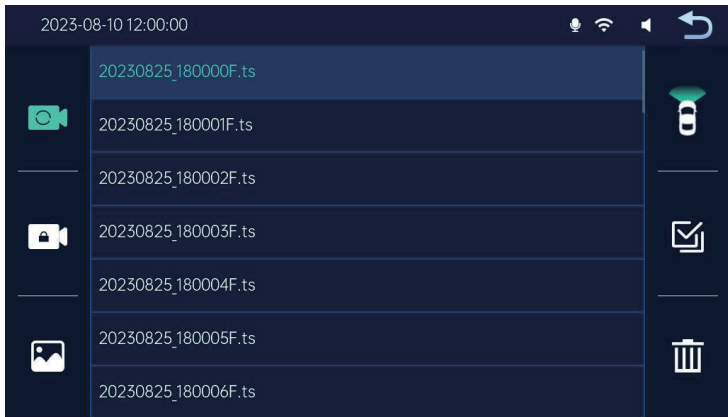


	Start recording and click again to stop.
	Lock videos for a few minutes to prevent deletion.
	Click to take a photo.
	View playback videos.
	Enable or disable audio recording.
	Click to switch camera views.

## 13.Playback



Click on the main interface for video playback to view camera-recorded videos and images.



Click on the top video for playback and play videos on the right.



Loop videos recorded by the front camera.



Loop videos recorded by the rear camera.



Click to save locked videos.

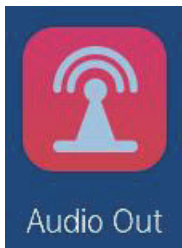


Click to view photos taken using the one-click photo function.



Click the [Delete] button to delete.

## 14. Audio Out



Click the [Audio Out] button to enter the audio connection function, which transmits device and phone sounds to the car speakers.

1. Direct playback through device speakers;
2. Connect the phone that has CarPlay and AndroidAuto

Turn on Bluetooth to connect to the original car Bluetooth, and transmit the phone sound to the original car speaker for playback;

3. AUX Line Connection: Use an AUX line to connect the device to the car's AUX port and transmit phone sounds to the car speakers.;
4. FM Transmitter Function: Adjust the car's FM frequency to match the device's FM frequency to transmit phone sounds to the car speakers.

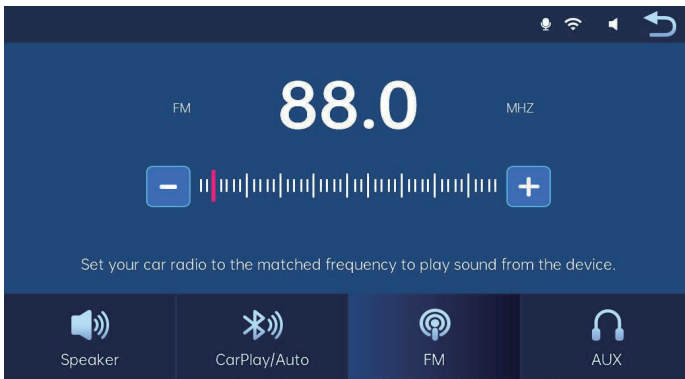


1

2


4

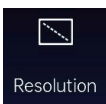
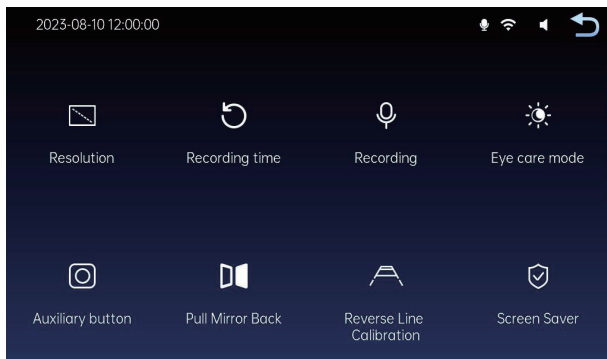
3



- ① Select the desired frequency, e.g., FM 88.0MHz.
- ② Adjust the car radio to receive the FM 88.0MHz frequency.
- ③ After successful FM transmission connection, audio will play through the car speak

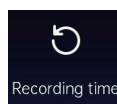
## 15. Settings

Click the [  ] button as shown in the diagram to enter the settings interface.



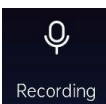
#### Video Resolution Settings:

1. 1080P
2. 2K
3. 4K

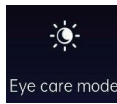


#### Loop Recording Time Settings:

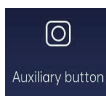
1. 1min
2. 3min
3. 5min



Enable or Disable  
Audio Recording



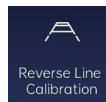
Enable or Disable Eye  
Protection Mode



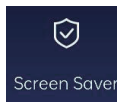
Enable or Disable  
Auxiliary Switch



Rear Camera Mirroring Function

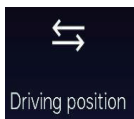
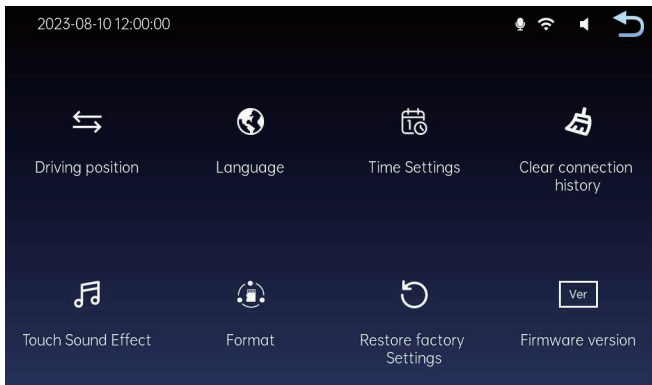


Adjust the  
Appropriate  
Reverse Line

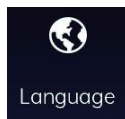


#### Screen Saver Settings:

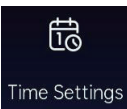
Set the screen to turn off after 1 minute/2 minutes/3 minutes. After setting the screen saver, press the power button or tap the screen to wake it up.



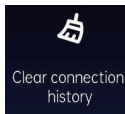
**Driving Mode:**  
Choose between left-hand drive or right-hand drive based on user preference.



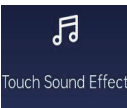
**Language Settings:**  
Languages can be set to: English/Russian/Spanish /French/German/ Japanese/Korean.



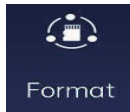
**Time Settings:**  
Enter settings to configure: year/month/day/hour/minute.



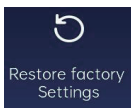
Select to clear the connection history of all peripherals of the machine.



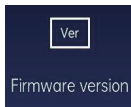
**Toggle Sound Effects When Touching the Screen.**



Select to Format the Storage Card.



**Restore the Device to Factory Default Settings.**



View Basic Information of the Current Version.

## 16. Troubleshooting

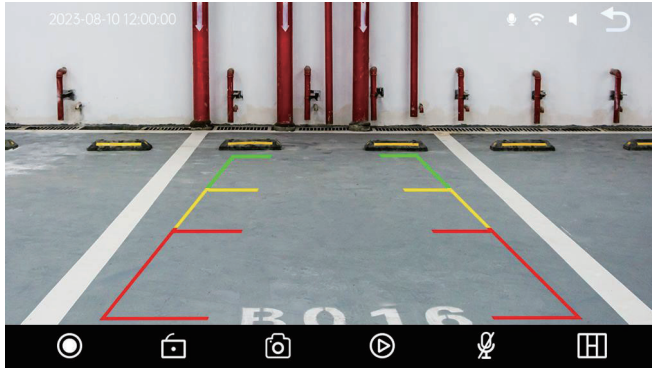
Problem	Solution
DVR Won't Start	1.Check if the DC power cord is properly connected, and inspect for any aging or damage.
	2.Check if the fuse is functioning properly and is not aged or damaged.
Touchscreen Unresponsive	1.The touch function will be inactive during the boot-up process.
	2.Inspect the touchscreen for damage and avoid using sharp objects on the screen to prevent scratches and damage.
Rearview Camera Not Displaying	1.Ensure the camera interface is connected to the bottom of the device.
	2.Use a rearview camera compatible with the manufacturer's specifications.
	3.Verify that the camera format is supported.
Device Overheating	1. Avoid direct sunlight or using the device in sunlight. The normal operating temperature range for 3SPRO is - 4°F to 149°F. After disconnecting the power, the F900 can operate normally once the temperature is below 149°F.
CarPlay Not Connecting	1.The first connection may take longer.
	2.Only iPhones support CarPlay.
	3.Ensure the phone's Wi-Fi and Bluetooth functions are working properly.
	4.Delete all records and reconnect.
	5.Restart the iPhone and try reconnecting.




Android Not Connecting	1.Only Android phones are supported.
	2.Update the relevant apps to the latest version.
	3.Ensure the VPN is not enabled on the phone.
	4. Check if the phone's Wi-Fi and Bluetooth functions are working properly.
	5.Restart the Android phone and try reconnecting.
Bluetooth Music	1.Set the screen playback mode to Bluetooth music, as other modes do not support Bluetooth music.

## 17. Reversing Line Calibration

Click [Reversing Line Calibration] to enter the settings:



Park the car in the center of a parking space. Manually drag [  ], to adjust the position so that the lateral coaxial line and parking lines are level with the ground. Once adjusted, click [Back] to confirm.

## 18. Product Parameters

Processor	V553
Front Camera	4K
Aperture	4-layer/6-layer options
Rear Camera	1080P
Max Recording Resolution	4K(3840*2160)
Language Options	English/Traditional Chinese/Simplified Chinese/Japanese/French/Russian, etc.
Encoding Type	H.264@4K H.264@1080P
Video Encoding Format	H.264 encoding, TS format storage
Photo Format	JPEG
Recording Mode	Loop recording without missing seconds
Storage	TF card (Class 10 or above, up to 256G)
Display	MIPI screen 9 inch 40PIN 600*1600
Video Format	TS
Operating Voltage	DC 5V 3A
Operating Current	1.8A
Static Current	Approximately 450uA
Storage Temperature (°C)	(-20°C -70°C)
Operating Temperature (°C)	(-20°C-60°C)
Operating Humidity (°C)	15-65%RH
Battery Type	/
Other	/

## 19. Customer Service



Line



WhatsApp



Facebook



Email

E-mail: [SUPPORT@VUDDIG.COM](mailto:SUPPORT@VUDDIG.COM)