

专业骑行前灯

M.22-2000LM
M.22-1600LM 说明书
M.22-1300LM

首次使用请先解除锁定模式。
快速按 3 次开关键，直至电源指示灯呈绿色恒亮。

RoHS CE FC
MADE IN CHINA

产品介绍



产品参数

遥控器电池容量：60mAh 材质：铝合金、PA、PC、ABS
防水等级：IP66 车灯充电输入：5V-2A
遥控器充电输入：5V-30mA
2000LM车灯电池容量：6000 mAh 3.6V
1600LM车灯电池容量：5000 mAh 3.7V
1300LM车灯电池容量：4500 mAh 3.7V

产品安装



遥控器安装



吊挂安装

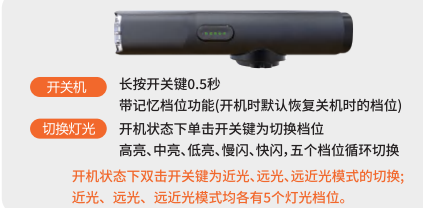


锁定模式

为防止儿童误操作，高温甚至是火灾引起的潜在损害，请在运输及储存过程中，将车灯设定到锁定模式，以免车灯被误触开启。如果未能按照锁定模式的指示进行操作，我们将不会对已造成的人员或财产损失负责。

进入锁定模式：
关机状态下，快速按3次开关键，直至电源指示灯呈红色闪烁状态。
解除锁定模式：
锁定状态下，快速按2次开关键，直至电源指示灯呈绿灯恒亮状态。
注意：第一次使用请先解除锁定模式

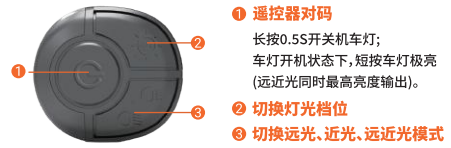
操作说明



遥控器对码和遥控器操作说明

遥控器对码

- 在车灯开机状态下，快速按下车灯开关键3次，此时设备亮起绿色指示灯；
- 按下遥控器上的任意按键，车灯绿色指示灯灭即为配对成功。



- 注意**
- 使用遥控器前，请先将车灯和遥控器对码完成，
 - 车灯锁定关机状态下，遥控器无法作车灯。

照明值与续航时间

2000流明 6000mAh 电池

模式 Mode	远 近 光同时开启状态 High and low beam simultaneous on mode		远 近 光单边开启状态 High low beam unilateral on mode				
	极亮 Luminous	高亮 High	中亮 Medium	低亮 Low	慢闪 Slow flash	快闪 Fast flash	
亮度 Brightness	2000LM	1000LM	500LM	300LM	0-500LM	0-500LM	
时间 Time	2H	3H30	6H40	11H30	13H	13H	

1600流明 5000mAh 电池

模式 Mode	远 近 光同时开启状态 High and low beam simultaneous on mode		远 近 光单边开启状态 High low beam unilateral on mode				
	极亮 Luminous	高亮 High	中亮 Medium	低亮 Low	慢闪 Slow flash	快闪 Fast flash	
亮度 Brightness	1600LM	800LM	400LM	200LM	0-400LM	0-400LM	
时间 Time	2H	3H40	7H	13H	13H30	13H30	

PROFESSIONAL CYCLING HEADLIGHT

M.22-2000LM
M.22-1600LM USER MANUAL
M.22-1300LM

Please unlock the device before use.
Quickly press the power button 3 times until the power indicator turns solid green.

RoHS CE FC
MADE IN CHINA

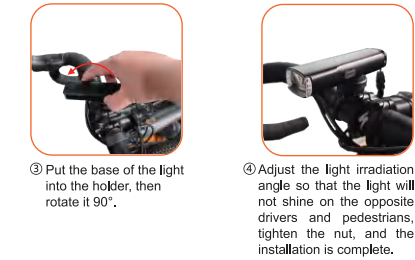
PRODUCT DESCRIP



PRODUCT PARAMETERS

Battery capacity(Remote control):60mAh 材质：Nylon, Alloy,PC,ABS
Charging input(Remote control):5V-30mA Waterproof:IP66
Charging input(Headlight):5V-2A
2000LM headlight battery capacity: 6000 mAh 3.6V
1600LM headlight battery capacity: 5000 mAh 3.7V
1300LM headlight battery capacity: 4500 mAh 3.7V

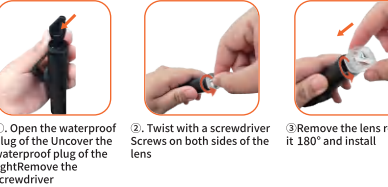
HOW TO INSTALL



REMOTE CONTROLINSTALLATION



UNDERNEATH MOUNTING

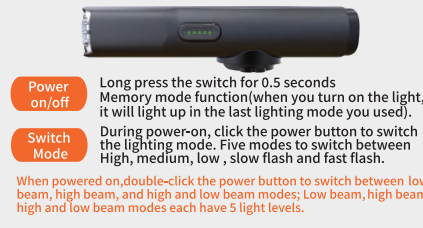


LOCK MODE

To prevent potential damage caused by children's misoperation, high temperature or even fire, please set the lights to lock mode during transportation and storage to prevent the lights from being accidentally turned on. If you fail to operate according to the instructions of the lock mode, we will not be responsible for the damage to people or property caused.

Lock:
When power-off, quickly press the power button 3 times continuously until the indicator light flashes red.
Unlock:
When power-on, quickly press the power button 3 times continuously until the indicator light turns solid green.
Note: For the first time use, please unlock the lock mode first.

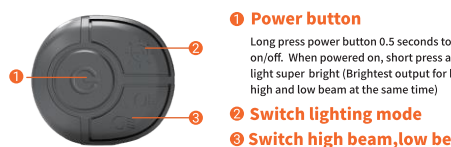
INSTRUCTIONS



PAIR CODE AND USE INSTRUCTIONS FOR REMOTE CONTROL

Pair code

- When powered on ,quickly press the power button 3 times,until the indicator light turns green.
- Then press any button on the remote control,green indicator light stops to complete the pair code.



- Note**
- Please pair the light with remote control before using the remote contro control.
 - When the light is in lock mode, remote control can not control the light light.

LUMENS/RUN TIME

2000LM- 6000mAh

Mode	High and low beam simultaneous on mode		High,low beam unilateral on mode				
	Luminous	High	Medium	LOW	Slow flash	Fast flash	
Brightness	2000LM	1000LM	500LM	300LM	0-500LM	0-500LM	
Time	2H	3H30	6H40	11H30	13H	13H	

When powered on,double-click the power button to switch between low beam,high beam, and high and low beam modes;Low beam,high beam, high and low beam modes each have 5 light levels.

1300流明 4500mAh 电池

模式 Mode	远 近 光同时开启状态 High and low beam simultaneous on mode		远 近 光单边开启状态 High low beam unilateral on mode				
	极亮 Luminous	高亮 High	中亮 Medium	低亮 Low	慢闪 Slow flash	快闪 Fast flash	
亮度 Brightness	1300LM	650LM	400LM	200LM	0-400LM	0-400LM	
时间 Time	2H10	3H45	6H30	12H30	12H30	12H30	

电量指示

颜色显示	绿色	蓝色	红色
剩余电量	80%-100%	30%-80%	30%以下

开机状态下:电量指示灯每间隔3秒闪烁提示剩余电量。
关机状态下:短按开关键显示剩余电量。

充电提示



注意事项

- 灯头请勿对照着眼睛开机；
- 长时间使用高亮档请勿触摸金属头；
- 在没有成年人监护的情况下请勿给儿童使用；
- 请在5℃至40℃的环境温度进行充电；
- 充电前请检查充电线是否良好；
- 充电时,请使用5V-2A USB电源适配器；
- 充满电后,请务必拔下充电接头；
- 请勿在高温环境里进行充电、放电及存放,否则会加速电池老化；
- 请勿将车灯置于车内或接近热源处；
- 正确充电后,若电池的使用时间越来越短,则表示充电电池已达到有效使用寿命,请在当地维修点更换电池,并遵守当地法规,妥善处理废弃充电电池。

存放注意事项

- 本产品在不使用的情况下,每隔3个月需要充电一次,以免造成电池损坏,导致无法使用；
- 请将车灯充满电后存放于阴凉干燥处。

1600LM 5000mAh

Mode	High and low beam simultaneous on mode		High,low beam unilateral on mode				
	Luminous	High	Medium	LOW	Slow flash	Fast flash	
Brightness	1600LM	800LM	400LM	200LM	0-400LM	0-400LM	
Time	2H	3H40	7H	13H	13H30	13H30	

1300LM 4500mAh

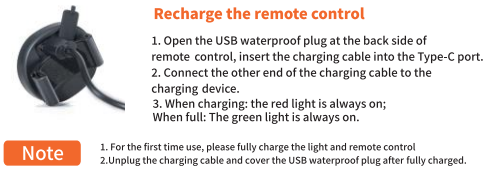
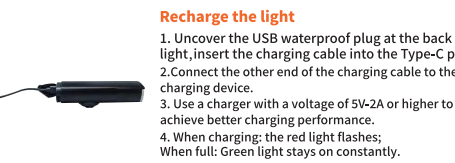
Mode	High and low beam simultaneous on mode		High,low beam unilateral on mode				
	Luminous	High	Medium	LOW	Slow flash	Fast flash	
Brightness	1300LM	650LM	400LM	200LM	0-400LM	0-400LM	
Time	2H10	3H45	6H30	12H30	12H30	12H30	

BATTERY INDICATOR

Color	Green	Blue	Red
Remaining Power	80%-100%	30%-80%	Below 30%

Power-on: The power indicator light flashes every 3 seconds to indicate the remaining power.
Power-off: Short press the power button to show the remaining power.

HOW TO RECHARGE



PRECAUTIONS

- Do not let the light head against your eyes when turn on it.
- Do not touch the mental head when using the highlight gear for a long time.
- Do not use for children without adult supervision.
- Please charge at an ambient temperature of 5℃ to 40℃.
- Please check if the charging cable is in good condition before charging.
- When charging, please use a 5V-2A USB power adapter.
- After charging, be sure to unplug the charging connector.
- Do not charge, discharge and store in a high temperature environment, otherwise it will accelerate the aging of the battery.
- Do not place lights in the car or near heat sources.
- After charging correctly, if the usage time of the battery is getting shorter and shorter, it means that the rechargeable battery has reached its effective service life. Please replace the battery at the local repair point and comply with local regulations, and properly dispose of the waste rechargeable battery.

PRECAUTIONS FOR STORAGE

- When this product is not in use, it needs to be charged every 3 months to avoid damage to the battery and make it unusable.
- Please store the lights in a cool and dry place after fully charging.

材质:105克双铜
尺寸:71*115mm

This device complies with Part 15 of the FCC Rules. Operation is subject to the following two conditions: (1) this device may not cause harmful interference, and (2) this device must accept any interference received, including interference that may cause undesired operation

NOTE: This equipment has been tested and found to comply with the limits for a Class B digital device, pursuant to Part 15 of the FCC Rules. These limits are designed to provide reasonable protection against harmful interference in a residential installation. This equipment generates, uses and can radiate radio frequency energy and, if not installed and used in accordance with the instructions, may cause harmful interference to radio communications. However, there is no guarantee that interference will not occur in a particular installation.

If this equipment does cause harmful interference to radio or television reception, which can be determined by turning the equipment off and on, the user is encouraged to try to correct the interference by one or more of the following measures:

- Reorient or relocate the receiving antenna.
- Increase the separation between the equipment and receiver.
- Connect the equipment into an outlet on a circuit different from that to which the receiver is connected.
- Consult the dealer or an experienced radio/TV technician for help.

Warning: changes or modifications not expressly approved by the party responsible for compliance could void the user's authority to operate the equipment

The devices has been evaluated to meet general RF exposure requirement , the device can be used in portable exposure condition without restriction