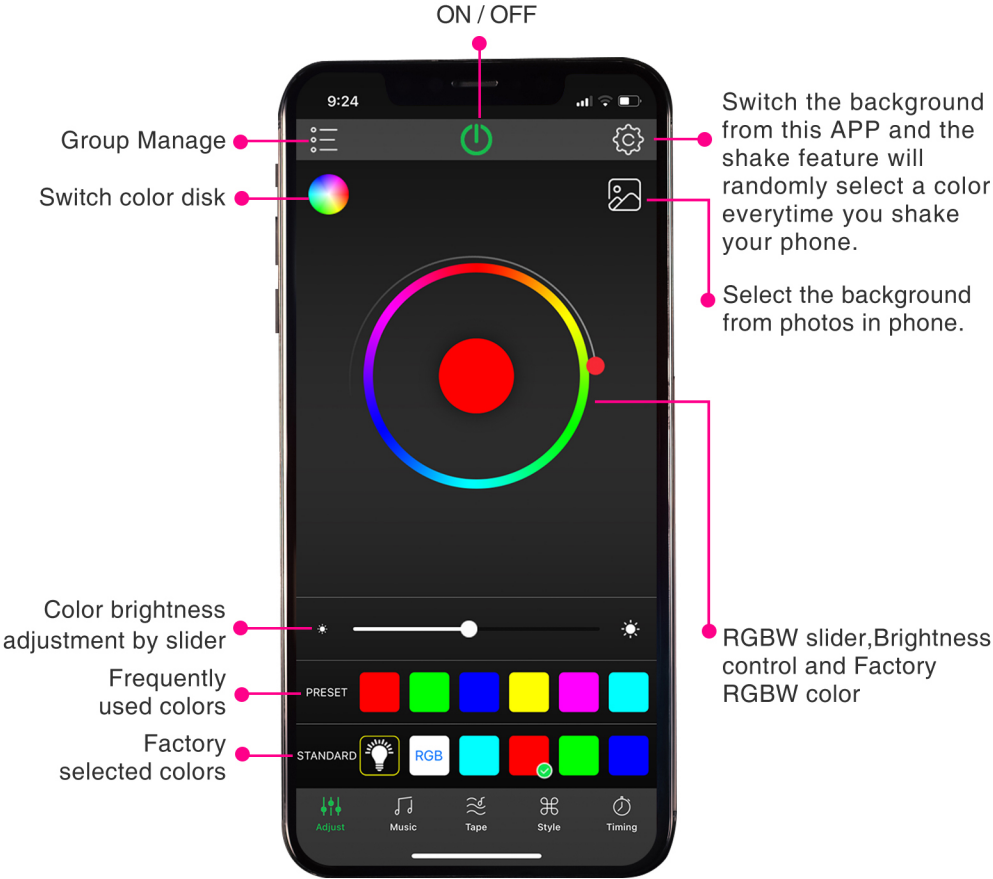
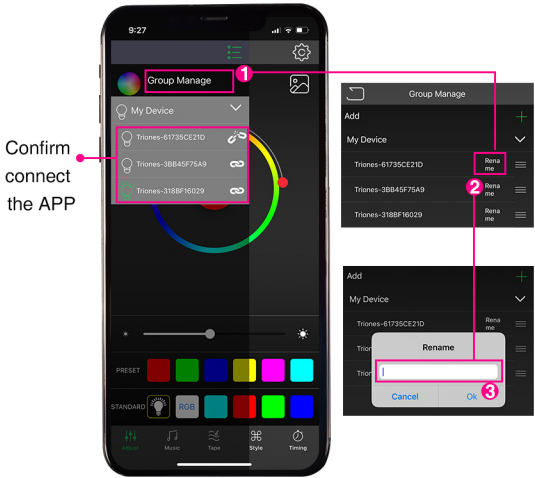


1. Home Screen



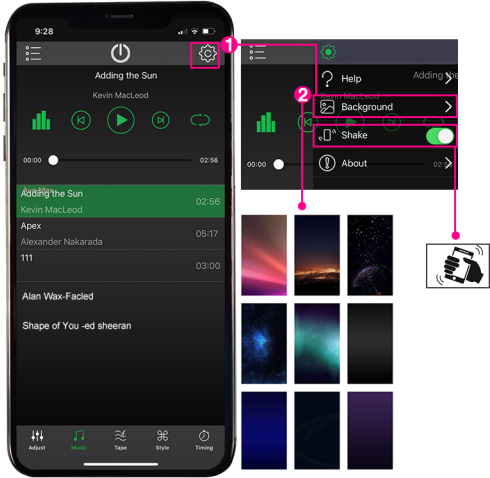
2. Group Manage

- 1. Checking the icon “ ” changed “ ”, That means it has connection successfully.
- 2. Rename the APP.



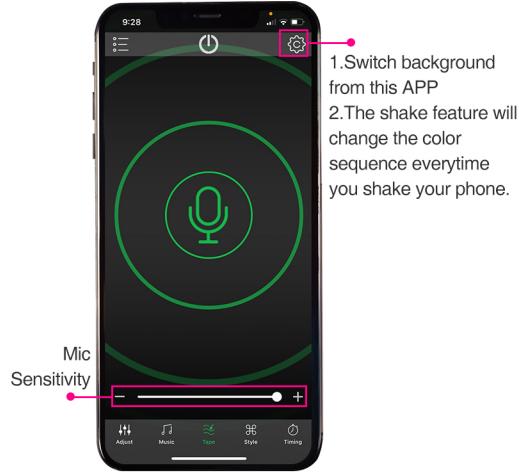
3. Music Feature

- 1. Using music in APP or phone to select .
- 2. The shake feature will select a different music everytime you shake your phone.



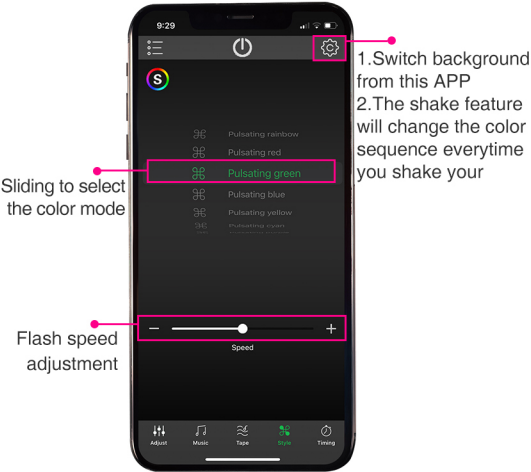
4. Tape voice feature

Alter voice will change the color mode.



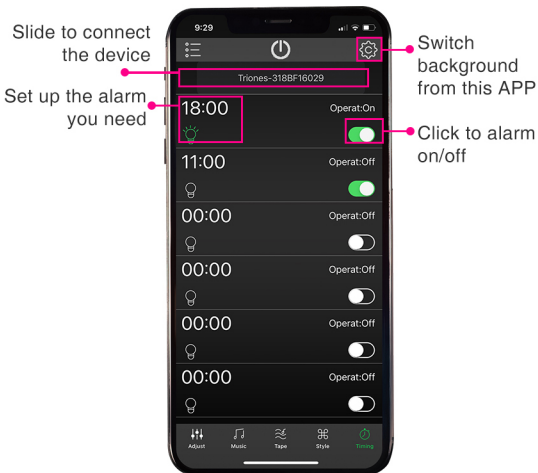
5. Style Function

Select the new color mode.



6. Timing Function

Timing interface will allow you to set alarm that once reached will turn the RGBW led light on or off.



7. Scan and Download

1. Scan the QR of the control box or manual, or search "HappyLighting" on app store to download the app.
2. Turn on your phone bluetooth function, and match the app successfully.

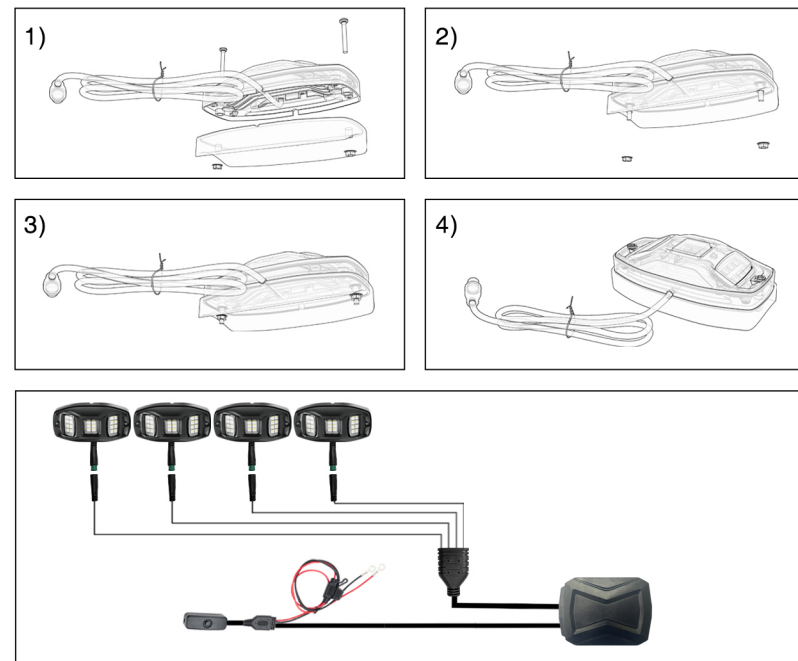


8. Three ways of switch controls the power



9. Installation Diagram

The image for your reference:



10. Features:

- Ultra Bright LED's Light up without delay.
- Small size allows to be installed anywhere.
- Hard-coated PC lens protects Light source from sand/dust, rock crawling/mudding.
- Solid die-cast aluminum body for extra durability while doubling as heat sink.
- Solid Colors and Different RGB light effects.

11. Specifications:

• Input Voltage	• DC 9-32V
• Output power	• 2Ax4/2Ax6/2Ax8/2Ax12
• Total brightness level	• 4grade/6grade/8grade/12grade
• Operating tempera	• -20℃~50℃
• IP Grade	• IP68
• Control mode	• APP+Remote Control
• Light emitting mode	• RGBW

FCC STATEMENT :

This device complies with Part 15 of the FCC Rules. Operation is subject to the following two conditions:

- (1) This device may not cause harmful interference, and
- (2) This device must accept any interference received, including interference that may cause undesired operation.

Warning: Changes or modifications not expressly approved by the party responsible for compliance could void the user's authority to operate the equipment.

NOTE :

This equipment has been tested and found to comply with the limits for a Class B digital device, pursuant to Part 15 of the FCC Rules. These limits are designed to provide reasonable protection against harmful interference in a residential installation.

This equipment generates uses and can radiate radio frequency energy and, if not installed and used in accordance with the instructions, may cause harmful interference to radio communications. However, there is no guarantee that interference will not occur in a particular installation. If this equipment does cause harmful interference to radio or television reception, which can be determined by turning the equipment off and on, the user is encouraged to try to correct the interference by one or more of the following measures:

- n Reorient or relocate the receiving antenna.
- n Increase the separation between the equipment and receiver.
- n Connect the equipment into an outlet on a circuit different from that to which the receiver is connected.
- n Consult the dealer or an experienced radio/TV technician for help.

FCC Radiation Exposure Statement:

This equipment complies with FCC radiation exposure limits set forth for an uncontrolled environment. This equipment should be installed and operated with minimum distance 20cm between the radiator & your body.