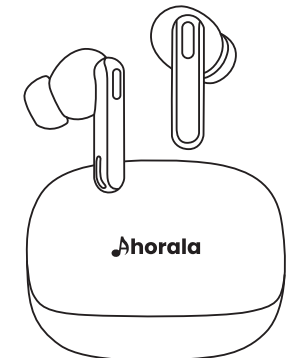


封面



Only music, Only you!



Ahorala 007

True Wireless Earphones
Noise Cancelling Earphones

User Manual

Safety Warning Section

Warning!

1. Do not dismantle or refit the product to avoid malfunction or fire hazards.

2. Keep away from corrosive liquids.

3. Keep away from extreme ambient temperatures below-10°C or above 50°C.

4. Keep away from children and pets.

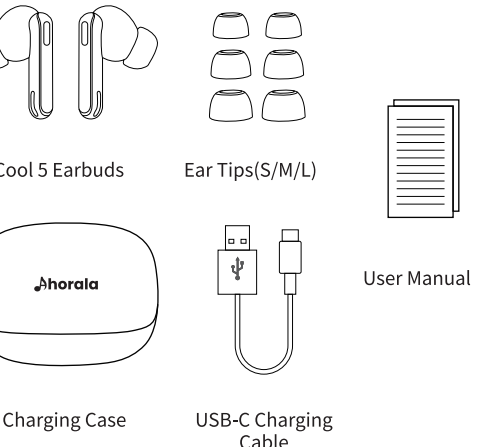
5. Do not touch the earbuds with sharp objects.

6. Do not use the product in thunderstorm weather.

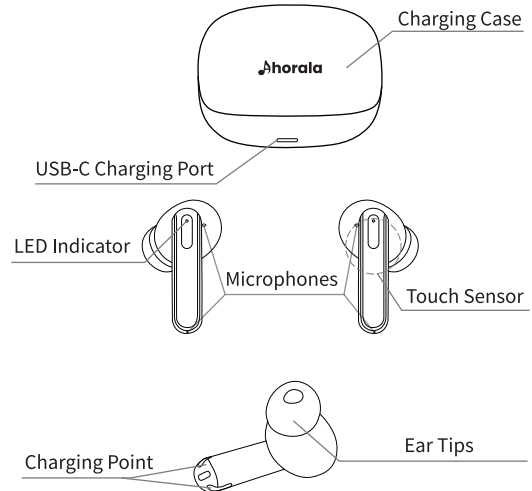
7. If it has not been used for more than a month, please charge and maintain it in time to ensure that it is safe.

8. Since the Bluetooth signal cannot be transmitted underwater, swimming, diving will cause the signal disconnected or intermittent.

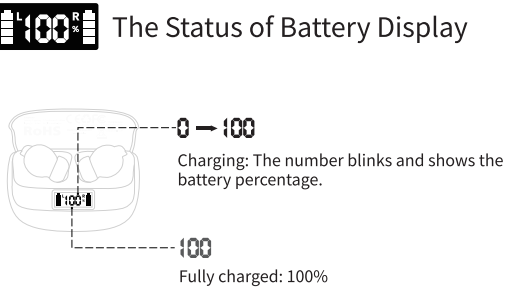
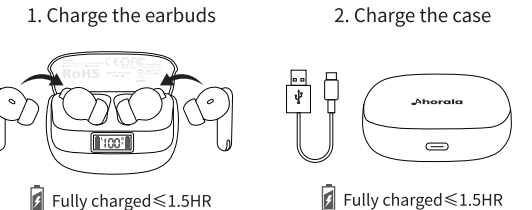
PACKAGE LIST



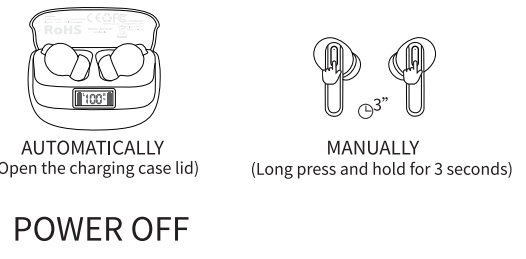
DIAGRAM



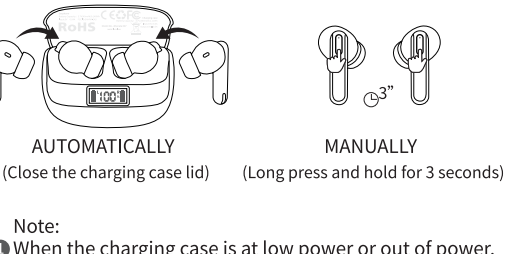
CHARGING



POWER ON



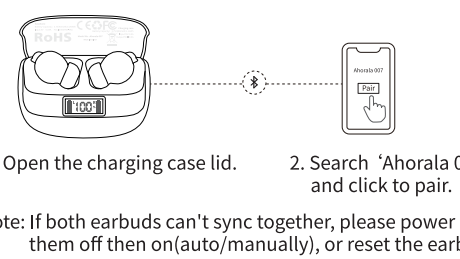
POWER OFF



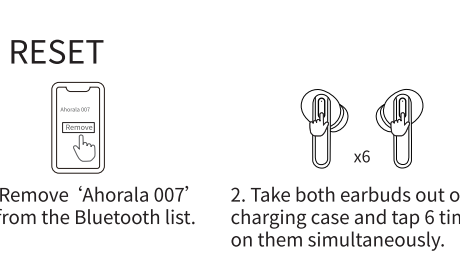
Note:

- When the charging case is at low power or out of power, the earbuds will not automatically power on/off in the charging case, please power them on/off manually.
- Earbuds will automatically power off if they are not connected with devices or out of 10 meters of pairing range for 10 minutes.

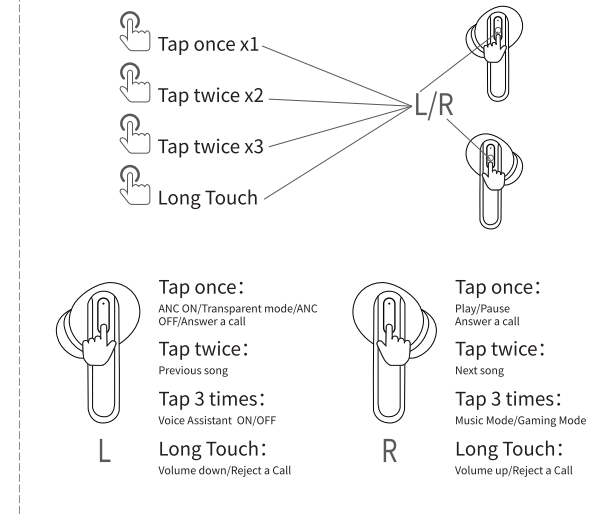
PAIRING



RESET



TOUCH CONTROL



Note: Due to the different system, some phone models can not sync volume with earphones.

SPECIFICATIONS

Model	Ahorala 007
Bluetooth Version	Bluetooth 5.3
Support Protocol	AVRCP, A2DP, HFP, HSP
Audio Decoding	SBC, AAC, MP3/MP4, mSBC
Speaker Driver	10mm
Impedance	32Ω±15%
Frequency Response	20Hz to 20KHz ±3dB
Battery Capacity	3.7V/40mAh(Earbud) 3.7V/400mAh(Case)
Charging Time	≤1.5 Hours(Earbud) ≤1.5 Hours(Case)
Charging Standard	USB Type-C, DC 5V/1A
Applicable ambient temperature	-10°C-45°C

Statement

Solutions to common problems

If there is a problem with the speaker.

- Power on the speaker.
- Check the status of the status indicator.
- Make sure the mobile device supports Bluetooth technology.
- Charge the battery.
- Turn up the volume on the speaker, device, and music app."If necessary, the product can be restored to the factory settings." Move the device closer to the speaker and away from other distractions or obstructions.
- If you still cannot solve the problem, please contact Ahorala customer service
- Regularly cleaning the earphone charging contact area can help with good charging

FCC Warning

This device complies with Part 15 of the FCC Rules. Operation is subject to the following two conditions:

(1) This device may not cause harmful interference, and (2) this device must accept any interference received, including interference that may cause undesired operation.

NOTE 1: This equipment has been tested and found to comply with the limits for a Class B digital device, pursuant to part 15 of the FCC Rules. These limits are designed to provide reasonable protection against harmful interference in a residential installation. This equipment generates, uses and can radiate radio frequency energy and, if not installed and used in accordance with the instructions, may cause harmful interference to radio communications. However, there is no guarantee that interference will not occur in a particular installation. If this equipment does cause harmful interference to radio or television reception, which can be determined by turning the equipment off and on, the user is encouraged to try to correct the interference by one or more of the following measures:

- Reorient or relocate the receiving antenna.
- Increase the separation between the equipment and receiver.
- Connect the equipment into an outlet on a circuit different from that to which the receiver is connected.

-Consult the dealer or an experienced radio/TV technician for help.

NOTE 2: Any changes or modifications to this unit not expressly approved by the party responsible for compliance could void the user's authority to operate the equipment. The device has been evaluated to meet general RF exposure requirement. The device can be used in portable exposure condition without restriction.

EU Battery Regulation

This symbol on the battery(ies) or on the packaging indicates that the battery(ies) provided with this product shall not be treated as household waste. Instead, please separate battery(ies) from other types of waste and recycle it(them) through your local recycling system to protect environment and health. When Cd is more than 20ppm or Pb is more than 40ppm, the chemical symbol of the excess substance shall be marked under the separate collection symbol) For more detailed information about recycling of this battery(ies), please contact your local authority or the shop where you purchased the product or battery(ies).

Thank you for purchasing the Ahorala authentic product.
For any assistance please contact Email: 17304477957@163.com

FCC ID: 2BK8D-SPL
Model No.: Ahorala 007
MADE IN CHINA



封底