

Instruction Manual

INCLUDING RECHARGEABLE BATTERY

Thank you for choosing our toy remote control car. To ensure correct and enjoyable use, please read the instructions and have a sufficient understanding of the product before use.

CAUTION:

BATTERY OPERATED PRODUCT

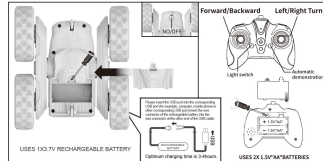
Suitable for ages 6+. As with all electric products, precautions should be observed during handling and use to prevent electric shock.

How to install the battery

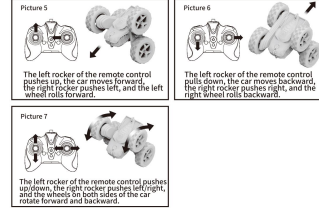
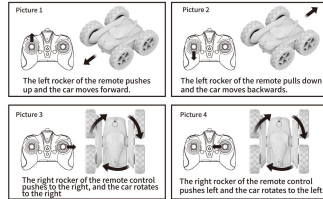
1. Turn the switches located on both the toy car and controller to the "OFF" position.
2. (If there is a switch)
3. Turn the unlock button located on the toy car latch controller to the "ON" position, and then open the car shell. (If there is a switch)
4. Insert the battery as shown in the image below.
5. Lock the car shell.

How to play

1. Turn the switch located on both the car and control device to the "ON" position.
2. Then operate the car.
3. When your R/C model car begins to lose performance, power, or functionality, it may be time to recharge the battery!



Basic instructions on how to use this product



Battery safety information

1. Don't short-circuit terminals.
2. Don't recharge non-rechargeable batteries.
3. Rechargeable batteries may only be charged under the supervision of an adult.
4. Different types of batteries or new and used batteries are not to be mixed.
5. Dispose of batteries safely. Don't dispose of batteries in fire as they may explode.
6. The battery charger used should be regularly examined for damage to the cord, plug, enclosure and other parts. In the event of damage do not use it until it has been repaired.
7. Exhausted batteries are to be removed from the toy.
8. Keep these instructions for future reference they contain important information.
9. Packaging has to be kept since it contains important information.
10. Rechargeable batteries are to be removed from the toy before being charged.

Care and Maintenance

1. Always remove batteries from the toy when it is not being used for a long period of time.
2. Wipe the toy gently with a clean dry cloth.
3. Keep the toy away from direct sunlight and avoid high temperatures.

Pay attention to

1. In the case of insufficient power, the flipping function will be lost during play.
2. Please do not use it on smooth ground, otherwise the flipping function will be lost during play.
3. Please ensure that the battery is fully charged.



FCC WARNING

This device complies with part 15 of the FCC Rules.

Operation is subject to the following two conditions:

- (1) this device may not cause harmful interference, and
- (2) this device must accept any interference received, including interference that may cause undesired operation.

Any changes or modifications not expressly approved by the party responsible for compliance could void the user's authority to operate the equipment. NOTE: This equipment has been tested and found to comply with the limits for a Class B digital device, pursuant to Part 15 of the FCC Rules. These limits are designed to provide reasonable protection against harmful interference in a residential installation.

This equipment generates, uses and can radiate radio frequency energy and, if not installed and used in accordance with the instructions, may cause harmful interference to radio communications. However, there is no guarantee that interference will not occur in a particular installation. If this equipment does cause harmful interference to radio or television reception, which can be determined by turning the equipment off and on, the user is encouraged to try to correct the interference by one or more of the following measures:

- Reorient or relocate the receiving antenna.
- Increase the separation between the equipment and receiver.
- Connect the equipment into an outlet on a circuit different from that to which the receiver is connected.
- Consult the dealer or an experienced radio/TV technician for help.

The device has been evaluated to meet general RF exposure requirement.

The device can be used in portable exposure condition without restriction.