

# WaitScher

## Solar Street Light - Instruction Manual

### **IMPORTANT:**

- Please check the solar street light is in good condition and test its function immediately after receiving this package, if you have any questions please don't forget to contact us.
- Before installing the solar street light, please plan the best location to ensure sufficient sunlight.
- Please let the solar street light charge for more than 12 hours in a dormant state for the first time use.

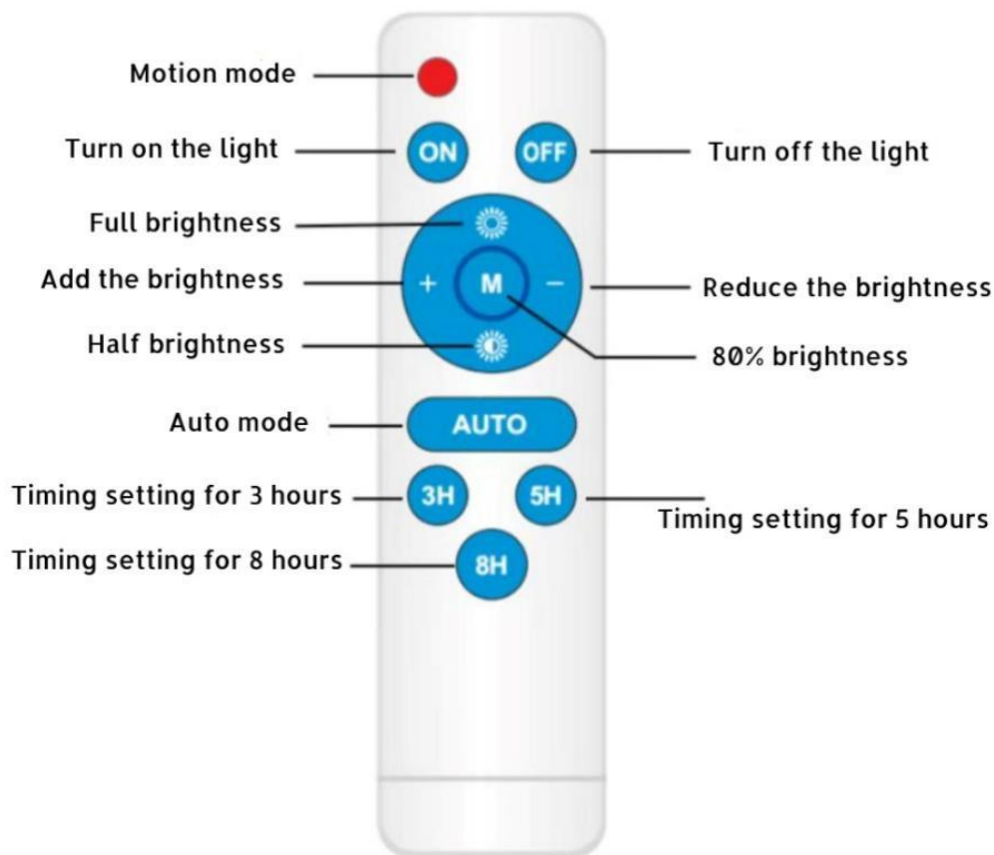
### **A PACKAGE INCLUDES:**

- Solar Street Light (Includes Solar Panels, Lithium Batteries, Light Beads, ABS Housing, Bluetooth Modules)
- Install Accessories (Screw set for wall mounting and pole mounting)
- Remote Control (Provide batteries)
- User Manual

### **APP Usage Steps:**

- Download "SensorX" APP from the Apple App Store or Google Play Store
- Add device
- Enter the authorization code "666666"
- Use the commands of the APP to control the lights

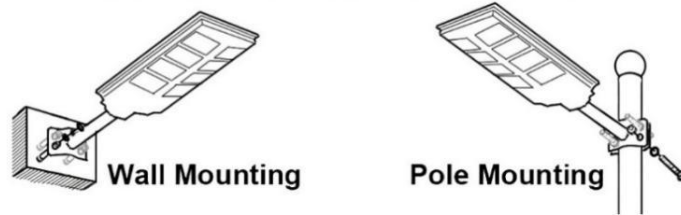
## Remote Control Instructions



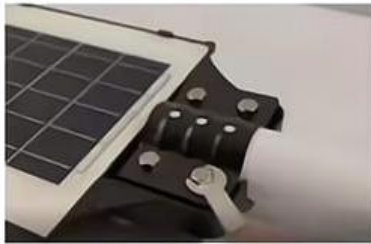
### Installation Instructions:

- Please check whether the light can work normally before installation.
- In order to allow the light sensor to better distinguish between day and night, please protect the solar panel away from other artificial light. Otherwise it will interfere with the normal operation of the sensor.
- To make the outdoor solar light work more efficiently, please install the light in a place where direct sunlight can reach and away from any kind of shade.
- Two installation methods for choosing, install it on the wall or on a pole. It is recommended to install the light at a height of 16ft to 20ft or a pole with a diameter of 2.4in-3.9in.

## INSTALLATION METHOD



### Wall Mount



Step 1: Attaching the LED light and fixing arm pole



Step 2: Make 4 small holes in the wall



Step 3: Fixing the LED light to the wall with 4 screws

### Pole Mount



Step 1:  
Attaching the LED light and  
fixing arm pole



Step 2:  
Fixing the LED light and mounting  
bracket with 4 screws



## NOTE:

- The battery is not fully charged before shipping, so it is recommended that the solar street light be charged in "OFFMode" for more than 12 hours to work better.
- In some areas the sunlight is not strong enough, so the solar street light may not be bright enough or used long enough, please charge it for a longer time to make sure the solar panel can absorb more energy.
- The solar street light is in "OFFMode" by default and must be activated by pressing the ON/OFF button for 3 seconds before use.
- The remote control and App are not valid when the solar street light is off.
- If solar street light is in **Sensing Mode**, it will automatically turn on at night and maintain 30% low-power illumination. When someone passes by, the light will automatically enter high-brightness mode. After leaving for 15 seconds, the light will go back into low-brightness mode.
- If solar street light is in **Automatic Mode**, the light will automatically turn on at night and automatically turn off at dawn.
- If solar street light is in **Timing Mode**, the light will automatically turn on at night and automatically turn off after X hours you set.

## Warning:

- **The solar street light contains high-intensity LED devices. To prevent permanent eye damage, do not look closely at the beam.**

**This device complies with part 15 of the FCC Rules.**

**Operation is subject to the following two conditions:**

- (1) This device may not cause harmful interference, and (2) this device must accept any interference received, including interference that may cause undesired operation.

**NOTE:** This equipment has been tested and found to comply with the limits for a Class B digital device, pursuant to part 15 of the FCC Rules. These limits are designed to provide reasonable protection against harmful interference in a residential installation. This equipment generates, uses and can radiate radio frequency energy and, if not installed and used in accordance with the instructions, may cause harmful interference to radio communications. However, there is no guarantee that interference will not occur in a particular installation. If this equipment does cause harmful interference to radio or television reception, which can be determined by turning the equipment off and on, the user is encouraged to try to correct the interference by one or more of the following measures:

- —Reorient or relocate the receiving antenna.
- —Increase the separation between the equipment and receiver.
- —Connect the equipment into an outlet on a circuit different from that to which the receiver is connected.
- —Consult the dealer or an experienced radio/TV technician for help.
- **Warning:** Changes or modifications not expressly approved by the party responsible for compliance could void the user's authority to operate the equipment.

The distance between user and products should be no less than 20cm