

Wireless Bluetooth Keyboard User Manual

Product Specification

- | | |
|---------------------------------------------------|-------------------------------------------|
| 1. Bluetooth 3.0 Interface Standard | 9. Standby Time: > 100 days |
| 2. Effective Operating Distance: within 10 meters | 10. Charging Time: 3-4 hours |
| 3. Modulation System: GFSK | 11. Lithium Battery Capacity: 150mA/420mA |
| 4. Working Voltage: 3.0-4.2v | 12. Sustainable Working Time: 100 hours |
| 5. Working Current: < 2.5mA | 13. Lithium Battery Life: 3 years |
| 6. Standby Current: < 0.3mA | 14. Key Strength: 80±10g |
| 7. Sleeping Current: < 40mA | 15. Key Life: 5 million strokes |
| 8. Charging Current: > 200mA | 16. Operating Temperature: -10°C - 55°C |

Operating Instructions

- Bluetooth keyboard support for post-2015 iPhones and tablets (IOS8 and above).
- Bluetooth keyboard support for Android 4.0 and above phones and tablets.
- Bluetooth keyboard supports laptop that system is Windows 10 and supports Bluetooth 5.0 or above.
- Desktop computers, learning machine with functional limitations, and student tablets are not supported.
- Since the system of mobile phone and tablet is different, please press "Fn+Q/W/E" to choose suitable system.
- It is normal that some shortcut keys cannot be used because they need to be suitable for each system.

Attention

1. Not compatible with large games and cloud computers, the keyboard is mainly used for office learning.
2. Pay attention to waterproof, do not splash liquid on the keyboard.
3. Avoid beating hard and prevent falling.
4. If you do not use the keyboard for a long time, we suggest closing the keyboard to extend the life of the keyboard.
5. In order to obtain longer battery life, it is recommended to charge the keyboard when the power indicator is blinking, each charge time is better than 3 hours.

Charging Instructions

When the battery is low, the power indicator flashes, indicating that the Bluetooth keyboard needs to be charged.

- Use the original Micro USB ladder port to charge. Connect end B to the keyboard, and end A to the power adapter or USB port of your computer. Under normal circumstances, 2-3 hours or so can be filled, according to the specific current, it is not recommended to use while charging.
- The Charge indicator light will light up when charging and will go off when it is full.
- The keyboard is normally fully charged when it leaves the factory. If it is charged again, the indicator will quickly go off.

Energy Saving Sleep Mode

When keyboard not use will be enter sleep mode after 10 mintuse, keyboard indicator will off. When need use again, press any key and wait for 5 seconds, then keyboard indicator will turn on.

Shortcut Key

Fn+ function combination key, Press **Fn** and the blue keys as below.

	Home		Pre Track		Brightness-
	Seach		Play/Pause		Brightness+
	Select All		Next Track		Lock Screen
	Copy		Volume-		Screen Keyboard
	Paste		Volume+		Apple Key
	Cut		Combination Function Key		

Connection Method

1. Button

OFF/ON

Power key: Slide the switch to ON or OFF position to realize the device power on or off.

Connect

Connect key: With the power key on, press the Connect key to get the keyboard ready for Bluetooth connection.

2. Indicator light

Power

Power indicator: When the power button is on, the indicator will be on for 4 seconds and then off.

Bluetooth

Bluetooth Link indicator: This indicator blinks when the connect key is pressed until the keyboard is connected to your device and the light goes off.

CAPS

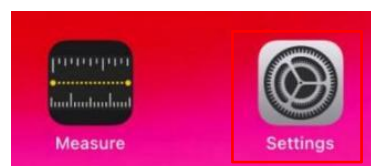
Caps Lock (Uppercase & Lowercase) indicator: Light on when the keyboard is in uppercase input mode.

Charge

Charging indicator: The indicator Light will be on when the keyboard will be charging by USB power cable.

Bluetooth Keyboard Connection Steps

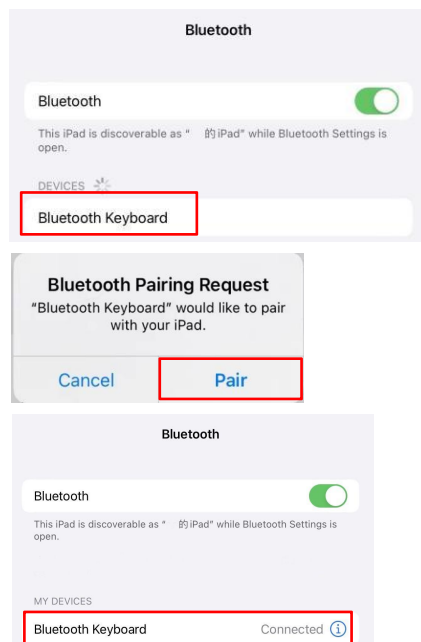
1. Push the "Power" switch to the **ON** position, and the power indicator will keep on for 4 seconds. Then press the "Connect" button, the Bluetooth connection indicator will blink, and the Bluetooth keyboard will enter the pairing mode.
2. Click the "Settings" icon of the iPad.
3. In the Settngs menu, click on "Bluetooth".



4. The iPad will automatically search for activated Bluetooth devices and find the "Bluetooth Keyboard" signal. (**Attention:** If two or more "Bluetooth Keyboard" are displayed when pairing, select the bottom "Bluetooth Keyboard".)

5. Click "Bluetooth Keyboard" and "Pair", and the Bluetooth Keyboard will be paired.

6. After the connection is successful, the pairing indicator will be off, and the device "Connected" will be displayed in the list of Bluetooth devices.



Input Switch

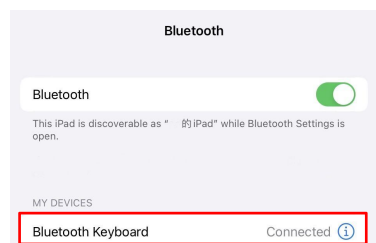
Apple: Hold down 【Control】 and then click the Space bar.

Android: Hold down 【Command】, then click the Space bar. For some devices, hold 【Shift+Space bar】, or press 【Shift】.

Case Insensitive

The solution of not being able to lock the caps key, using the following settings, you can lock the Caps Lock key to switch between upper and lower case:

1. First, make sure that the Bluetooth Keyboard is connected to your iPad.



2. Open the "Settings" interface -- "General", and click "Keyboard" in the General menu.



3. Click "Keyboard" and you will see "Hardware Keyboard".



4. Click "Hardware Keyboard". Show "Switch Languages using Caps Lock is on". Turn it off and you can press "Caps Lock" to switch uppercase and lowercase.

Unable to send message by "Enter"

- Wechat message sending: Click on the lower right corner of the WeChat interface [Me] - [Settings] - [Chat] - [Use Enter to send message].
- QQ message sending: Click the avatar - [General] screen to the bottom, and open the [Enter key to send message]. Some other software cannot be set.
- Some Apps cannot be sent directly because the APP does not support it, waiting for APP update.

Keyboard Troubleshooting

1. Make sure that the power is turned on.
2. Make sure that the Bluetooth keyboard battery has power (the indicator light will blink and light up when it is powered off).
3. Ensure that the keyboard is within the operable distance(not more than 10 meters away from the device), or encounter other signal interference.
4. Ensure your device's Bluetooth Settings are turned on.
5. Ensure Bluetooth is enabled on your wireless keyboard.
6. Ensure the wireless keyboard is paired with the device's Bluetooth.
7. Check whether you have connected to other phones or tablets. Delete the keyboard Bluetooth on other devices, and then try to match it again.
8. Check whether a similar keyboard has been connected, causing interference.
9. Remove all devices from the Bluetooth list and reconnect them.

[Can't Control Multiple Devices At The Same Time]

The keyboard can't control multiple devices at the same time, and if you want to control another tablet or phone, you need to disconnect the Bluetooth connection from the Bluetooth list of the previous device and reconnect to the new device.

[Clean]

Clean the keyboard with water, alcohol, or an alcohol-like disinfectant.

FCC Warning Statement

Changes or modifications not expressly approved by the party responsible for compliance could void the user's authority to operate the equipment. This equipment has been tested and found to comply with the limits for a Class B digital device, pursuant to Part 15 of the FCC Rules. These limits are designed to provide reasonable protection against harmful interference in a residential installation. This equipment generates uses and can radiate radio frequency energy and, if not installed and used in accordance with the instructions, may cause harmful interference to radio communications. However, there is no guarantee that interference will not occur in a particular installation. If this equipment does cause harmful interference to radio or television reception, which can be determined by turning the equipment off and on, the user is encouraged to try to correct the interference by one or more of the following measures:

- - Reorient or relocate the receiving antenna.
- - Increase the separation between the equipment and receiver.
- - Connect the equipment into an outlet on a circuit different from that to which the receiver is connected.
- - Consult the dealer or an experienced radio/TV technician for help.

This device complies with part 15 of the FCC Rules. Operation is subject to the following two conditions:

- (1) This device may not cause harmful interference, and
- (2) this device must accept any interference received, including interference that may cause undesired operation.

The device has been evaluated to meet general RF exposure requirement. The device can be used in portable exposure condition without restriction.