

Pan/Tilt Security Wi-Fi Camera Quick Start Guide (U-C200 as an example)

Product Introduction

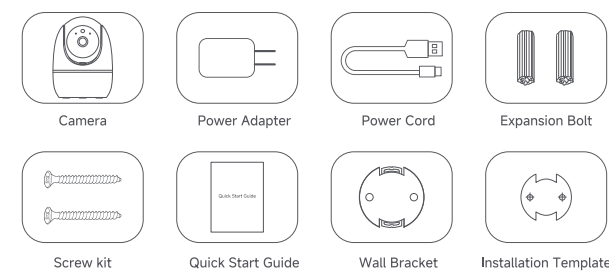
1. Product Description

The Pan/Tilt Security Camera U-C200 is a high-performance home monitoring camera that integrates such functions as 360° visual coverage, 2MP video, full color night vision, motion detection/tracking, humanoid detection/tracking, two-way audio. It is commonly used in indoor monitoring scenarios, such as homes, shops, offices and classrooms.

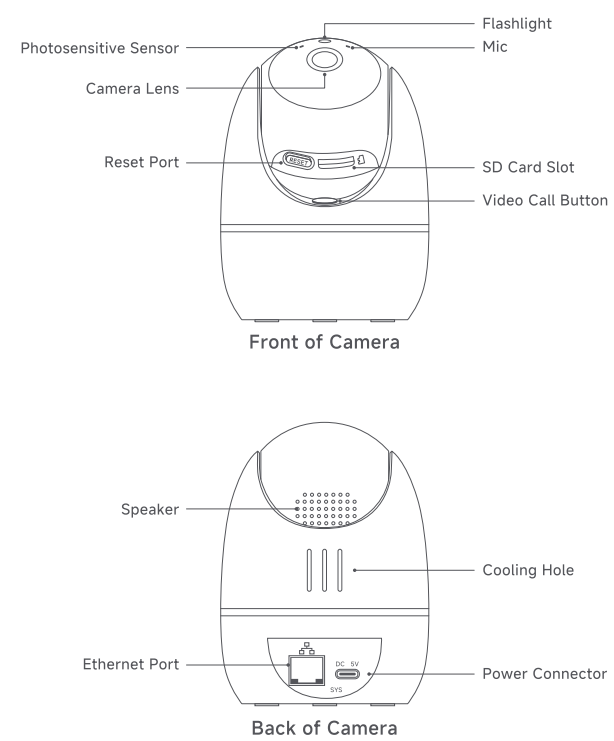
2. Product Features

- ▲ Adopt high performance processing chip and platform, reliable and stable performance.
- ▲ Adopt advanced video compression technology, high compression ratio, flexible processing, ultra-low bit rate.
- ▲ Support LAN and WiFi dual connection mode.
- ▲ Support cloud storage and memory card storage, Micro SD card needs to be provided by yourself, the maximum support 512GB.
- ▲ Support TCP/IP and other network communication protocols.
- ▲ Support motion detection alarm.
- ▲ Support APP remote monitoring.
- ▲ Supports various installation methods, including wall mounting and hanging.
- ▲ Do not allow the device to get wet or use it near water or in a humid environment.

3. Packing List



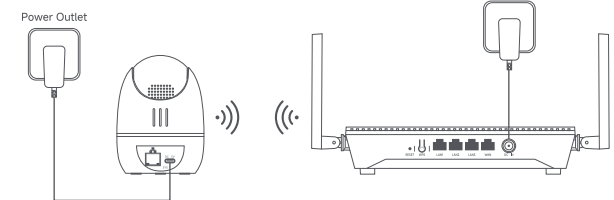
4. Appearance & Interface



Add the camera to APP

ⓘ Tips: Before adding your camera, ensure that the router is connected to the internet successfully and the filter function is disabled.

1. Power on the camera. The indicator lights solid orange after the camera is powered on. When the indicator blinks orange quickly, the camera is waiting to connect to a 2.4 GHz Wi-Fi network.



2. Download the App onto your mobile device by scanning the QR codes or searching for CareCamPro in the App Store or Google Play.

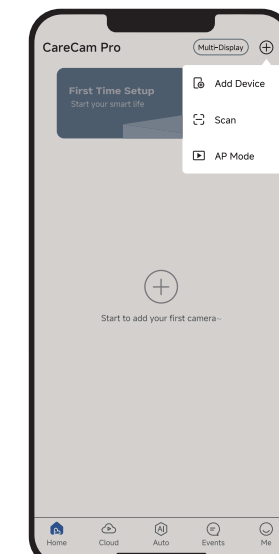


GET IT ON
Google Play

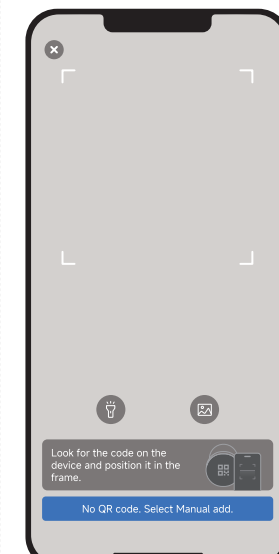


Available on the
App Store

3. Run the App and follow the instructions to complete user registration. Enter the homepage, and tap (⊕) in the upper right corner of the homepage.



4. Scan the QR code on the bottom of the camera, and follow the instructions in the App.

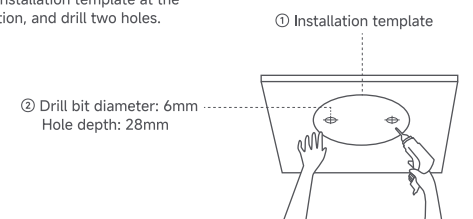


Install the Camera

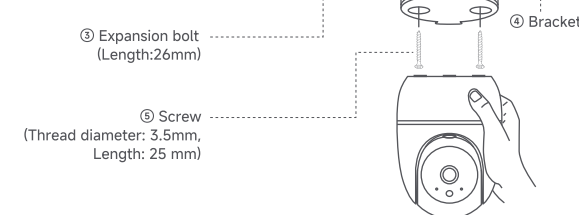
The camera supports desktop, ceiling and wall mounting. This guide takes ceiling mounting as an example.

ⓘ Tips: (1) Ensure that the ceiling is strong enough to withstand three times the weight of the camera and bracket.
(2) You may need a hammer drill, a drill bit, a screwdriver, and a ladder for the installation.

1. Place the installation template at the desired location, and drill two holes.

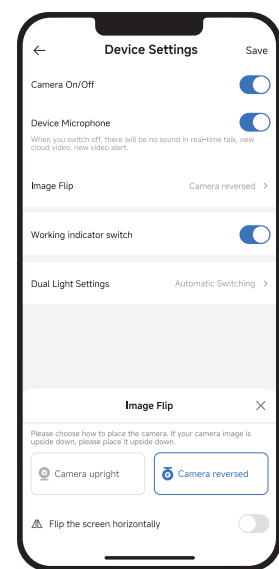


2. Insert two expansion bolts into the holes and use the screws to affix the camera's bracket over the expansion bolts. Attach the camera on the bracket and rotate to secure the camera.



After finishing the ceiling mounting, you need to adjust the camera installation status to facilitate monitoring.

Method: Run the App. Choose the camera on the homepage, tap Settings (⊕) in the upper right corner > Device Settings > Image Flip, choose Camera reversed and save the setting.



FAQ

- Q: What should I do if I failed to add the camera?
A: Try the following solutions:
- Ensure that the router is connected to the internet.
- The camera only supports 2.4 GHz Wi-Fi. When adding the camera, you need to connect the smartphone to a 2.4 GHz Wi-Fi.
- Do not hide the Wi-Fi network of the router when adding the camera (After adding the camera successfully, you can hide the Wi-Fi network).
- Confirm whether the indicator of the camera blinks orange quickly. If not, reset the camera by referring to Appearance and configure it again.
- Q: What should I do when the video preview is not smooth?
A: Try the following solutions:
- Ensure that the Wi-Fi network of the router is smooth.
- Take the router closer to the camera.
- When previewing the video with cellular mobile data, ensure that the internet connection of the smartphone is smooth.
- You can adjust the video clarity according to the internet status.
- Q: What should I do if the video image is upside down on my U-C200 camera?
A: Run the App. Choose the camera on the homepage, tap Settings (⊕) in the upper right corner > Device Settings > Image Flip, choose Camera reversed and save the setting.
- Q: How to do if the device is offline after changing a router or WiFi password?
A: The device keeps the original password. If password is changed and can't match with the original password, the device is not able to be online again. Under this situation, please reset the camera and re-add according to the APP tips.

FCC

FCC Statement

This equipment has been tested and found to comply with the limits for a Class B digital device, pursuant to Part 15 of the FCC Rules. These limits are designed to provide reasonable protection against harmful interference in a residential installation. This equipment generates, uses and can radiate radio frequency energy and, if not installed and used in accordance with the instructions, may cause harmful interference to radio communications. However, there is no guarantee that interference will not occur in a particular installation. If this equipment does cause harmful interference to radio or television reception, which can be determined by turning the equipment off and on, the user is encouraged to try to correct the interference by one or more of the following measures:

- Reorient or relocate the receiving antenna.
 - Increase the separation between the equipment and receiver.
 - Connect the equipment into an outlet on a circuit different from that to which the receiver is connected.
 - Consult the dealer or an experienced radio/TV technician for help.
- The device is for indoor usage only.
Operation is subject to the following two conditions: (1) this device may not cause harmful interference, and (2) this device must accept any interference received, including interference that may cause undesired operation.

Radiation Exposure Statement

This device complies with FCC radiation exposure limits set forth for an uncontrolled environment and it also complies with Part 15 of the FCC RF Rules. This equipment should be installed and operated with a minimum distance 20cm between the device and your body.

Caution:

Any changes or modifications not expressly approved by the party responsible for compliance could void the user's authority to operate this equipment. This transmitter must not be co-located or operating in conjunction with any other antenna or transmitter.

NOTE: (1) The manufacturer is not responsible for any radio or TV interference caused by unauthorized modifications to this equipment. (2) To avoid unnecessary radiation interference, it is recommended to use a shielded RJ45 cable.

Quick Installation Guide

Without our official writ permission, no unit or individual shall be copied, reproduced, transcribed or translated in part or whole book. In any form or by any means (electronic, mechanical, printing, recording or other possible means) for the propagation of goods any commercial, profitable purposes.

U-Speed is the registered trademark of Chengdu U-speed Information Technology Co., Ltd. Company. All other trademarks or registered trademarks mentioned in this document, by respective owners.

Product specifications and information mentioned in this manual are for reference on subject to updates without notice. Unless there are other special agreed, this manual is used only as a user guide. All statements, information, etc. are not constitute any form of guarantee.

Manufacturer: Chengdu U-speed Information Technology Co., Ltd.
Address: No. 602, 6/F, Unit 1, Building 1, No. 168 Huayang Zhongxing Shangjie, Tianfu New District, Chengdu, Sichuan, China