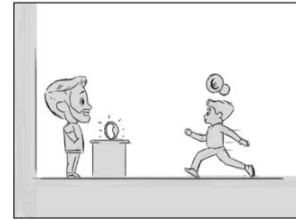


# JB-TAG game instruction

## 1. Wristband purchase

As soon as you walk in the door,  
you can buy a wristband at the cash register.  
This you need to bring one to participate in the game.



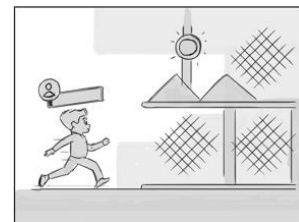
## 2. Select Avatar and activate the band

Go to the login bar to activate your strap.  
Here you can choose the avatar you use in the game on behalf.  
Also fill in your name to get points.  
Here's a list of your bands.



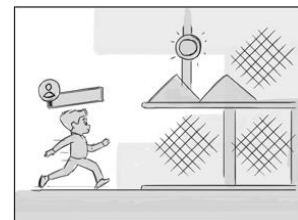
## 3. Enter the playground

Once you register your profile picture and your name,  
ran to the playground and began to play.  
Your goal be "tagged" with as many interactive lights as possible.  
You can find these lights all over the playground.



## 4. Lamp mark

When you're running around the playground,  
you're looking for active a glowing lamp.  
Scan a light with your tape collect points.  
These lights come in different colors.  
Each color represents a certain number of dots.  
The more lights you mark,the higher your score.



## 5. Real-time tracking score

Your score will be immediately tracked and displayed a screen in the park.

This gives you a chance to see how you treat other players. But also see if you have enough points win!



## 6. Price retrieval

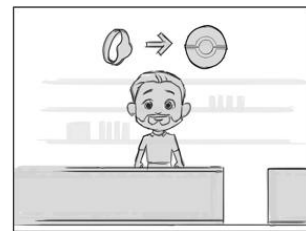
When you have enough points, you can go to the cash register to claim your prize.

Do you want to keep playing?

This can be done within the specified time from your band.

So you can mark more lights

maybe number one on the scoreboard!



# JB-TAG System installation guide

## Contents:

- 1.Introduction
- 2.System overview
- 3.Hardware installation
  - Step 1: Insert the login column
  - Step 2: Prepare for installation
  - Step 3: Locate the game light
  - Step 4: Connect the game structure
  - Step 5: Install game lights
  - Step 6: Show questions and reward lights
4. Software installation and configuration
5. System test
6. System management
7. Conclusion

## 1. Introduction

The JB-TAG system is designed to provide a dynamic and interactive gaming experience in indoor gaming venues. This manual provides step-by-step instructions for properly installing, configuring, and managing your system. Follow these steps carefully to ensure optimal operation and security of the system.



## 2. System overview

The JB-TAG system consists of several components:

- Game tape: A tape used by players with nfc tags to collect points.
- Login bar: Here, players scan their links to join the game.
- Interactive lights: Respond to the strap and give the player visual feedback.
- Management software: Used to set up and manage the system.



### **3. Hardware installation**

#### **Step 1: Insert the login column**

**Description:** The login bar is an important part of the JB-TAG system and must be placed in a clearly visible and secure location.

#### **Actions:**

1. One place the login column in a strategic location in the room, such as an entrance or center point.
2. Connect the power supply to a 110/220 volt power supply to provide power to the entry column.
3. Connect the TV connected to the dock to a stable local wi-fi network.

**Please note:** It is best not to use the guest's wi-fi network to avoid connection issues.



## Step 2: Prepare for installation

Good preparation is essential for a successful installation. Before starting the installation, make sure everything is ready.

### Actions:

1. One discuss installation methods and make sure there is a clear plan.
2. Ensure a safe working environment and comply with local safety regulations.
3. Check that all necessary parts and tools are available.
4. Consider an installation time of about 20-30 hours.
5. Use at least one certified ladder to work safely at high altitudes.



### Step 3: Locate the game light

**Description:** Game lights are the core of the JB-TAG system. It is important to position them correctly to achieve the best results.

#### **Actions:**

1. One divide the game lights into groups of 1 to 6, preferably 5.
2. Mark the location of the play lights and make sure the wires are out of reach of children.
3. Develop lighting positioning plan:
  - Put lights on several floors and in accessible areas.
  - Make sure the distance between the lamps is 3-5 meters, with a maximum distance of 20 meters.
  - Avoid placing lights in unsafe places, such as narrow passageways and chute exits.
  - Always keep the lights in your parents' line of sight for added appeal.





#### Step 4: Connect the game structure

**Description:** Properly connecting the game structure is the key to ensuring the proper operation and safety of the game lights.

#### Actions:

1. One connect the supplied adapter to an existing power outlet (110/240 volts).
2. Pull the cable to the marked position and divide the game lights into 5 groups (up to 6 lights per group).
3. Use the shortest possible cable and extend it with an extension or power distribution plug if necessary.
4. Make sure the cable is secure and not loose so the kids can't go.







## Step 5: Install game lights

### Install game lights

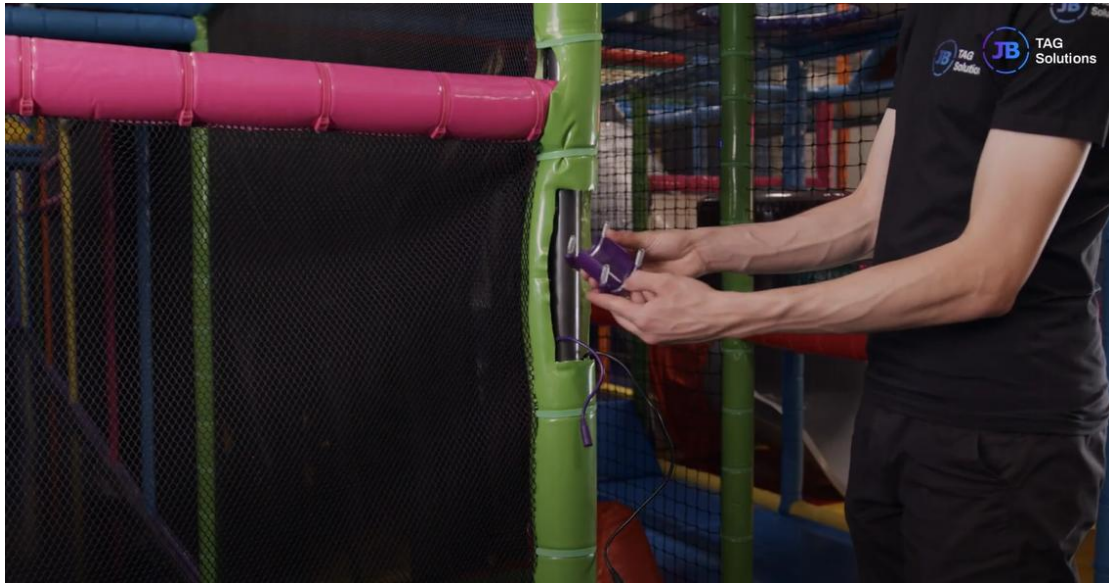
**Note:** The installation of game lights must be careful to ensure safety and functionality. Install the game lights according to the order of the predetermined position as follows:

#### Actions:

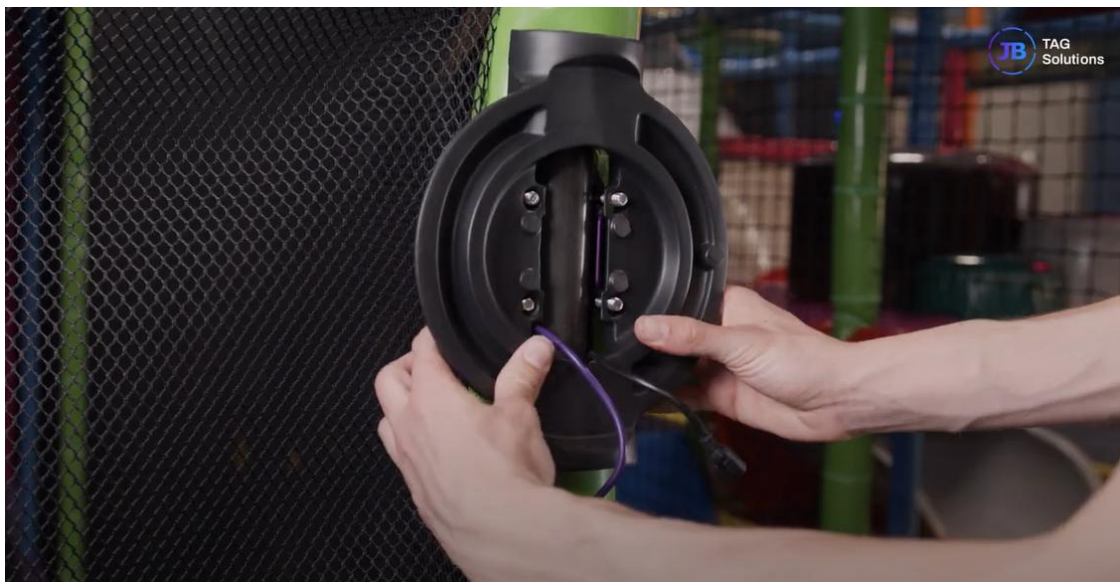
1. One put the mold on the foam and cut it out. This provides space for the nozzle of the lamp holder.



2. Clamp the bracket around the pipe.

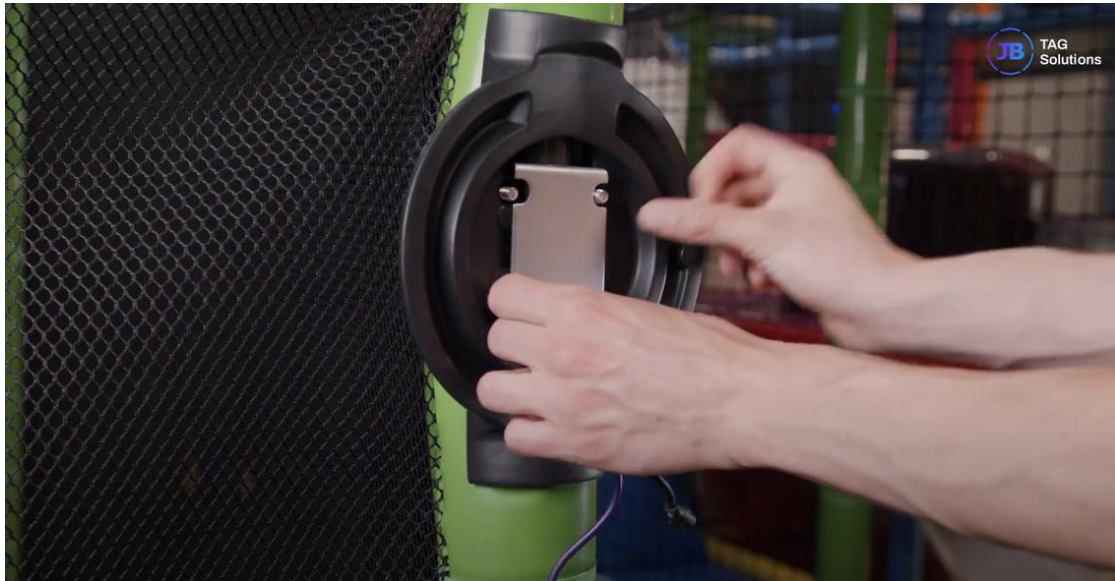


3. Remove the black mouthpiece from the lamp holder and place it on the stand. Make sure the cable can go through.

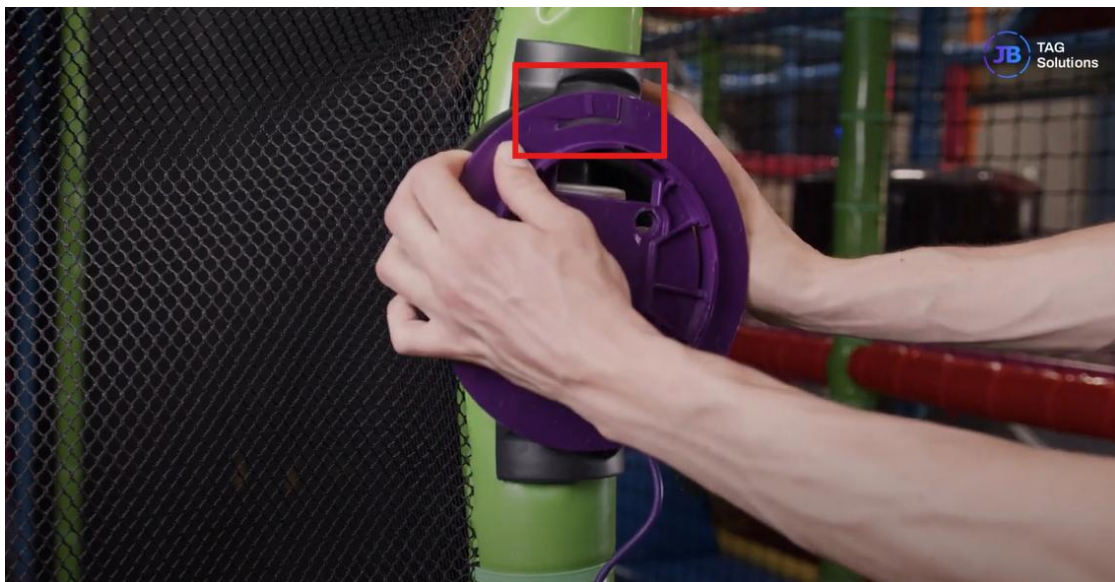




4. Place the metal plate.



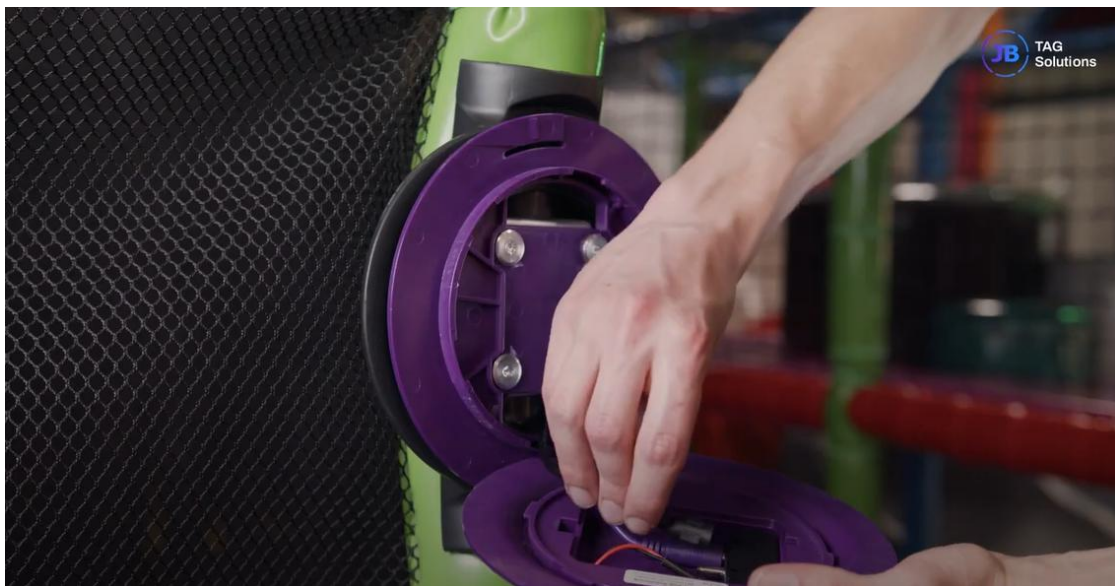
5. Take the purple lamp holder and put it on it. Make sure the cable goes through again. It is also important that the click system of the lights is aligned upward (see the mark in the image below).



6. Now install the four bolts one by one using 5mm jacks. Make sure everything is in order.



7. Now install the lights. Make sure the cable is connected to the pin of the lamp.



Then press the light on the purple stand. Make sure the dots shown in the bottom picture are aligned with the click system on the purple bracket. If this is correct, you can turn the light around and click on it.





8.Finally, a purple silicone ring is used to complete the lamp. Make sure it attaches well to the entire light.



#### **Step 6: Place rewards and lights:**

1. One place the release and reward lights in a clearly visible location, such as at the sales counter.
2. Fill the dispenser box with the provided TAB strips so that players can easily grab

them.



#### 4. Software installation and configuration

**Description:** Software is crucial to the operation of JB-TAG system. It is important to install and configure the software correctly.

**Actions:**

1. One download the JB-TAG management software from the official website and install it on your computer.
2. Connect the login bar and game lights to your computer via the appropriate cable.
3. Open the software and log in to your account.
4. Configure the game rules, points, and other relevant parameters according to your needs.



## **5. System test**

**Description:** Test the system thoroughly to check that all components are working properly.

### **Actions:**

1. One test the login bar by scanning a tape and checking that it is correctly identified.
2. Make sure the game light responds well to the belt and is positioned correctly.

## **6. System management**

**Description:** Management software offers a wide range of possibilities for system monitoring and management.

### **Actions:**

1. One use software to view game data and manage Settings.
2. Please refer to the software manual for detailed instructions on daily administration and troubleshooting.

## **7. Conclusion**

The JB-TAG system provides a unique, interactive gaming experience that requires careful installation and configuration. Follow this guide carefully to ensure optimal system functionality. If you have any questions or queries, please contact JB Label Solutions Customer Service for support.

## **8 FCC Warning**

This device complies with part 15 of the FCC Rules. Operation is subject to the following two conditions:

- (1) This device may not cause harmful interference, and

(2) this device must accept any interference received, including interference that may cause undesired operation.

NOTE 1: This equipment has been tested and found to comply with the limits for a Class B digital device, pursuant to part 15 of the FCC Rules. These limits are designed to provide reasonable protection against harmful interference in a residential installation. This equipment generates, uses and can radiate radio frequency energy and, if not installed and used in accordance with the instructions, may cause harmful interference to radio communications. However, there is no guarantee that interference will not occur in a particular installation. If this equipment does cause harmful interference to radio or television reception, which can be determined by turning the equipment off and on, the user is encouraged to try to correct the interference by one or more of the following measures:

- Reorient or relocate the receiving antenna.
- Increase the separation between the equipment and receiver.
- Connect the equipment into an outlet on a circuit different from that to which the receiver is connected.
- Consult the dealer or an experienced radio/TV technician for help. This equipment should be installed and operated with a minimum distance of 20 cm between the radiator and your body.

NOTE 2: Any changes or modifications not expressly approved by the party responsible for compliance could void the user's authority to operate the equipment.

#### RF EXPOSURE INFORMATION

This device complies with FCC radiation exposure limits set forth for an uncontrolled environment. This device should be installed and operated with minimum distance 20cm between the radiator & your body.