

SMART LOCK

Installation Guide

WHAT'S INCLUDED

Latch and strike



Exterior Assembly



Interior Assembly



Screws



Step 2



Step 6



Step 7

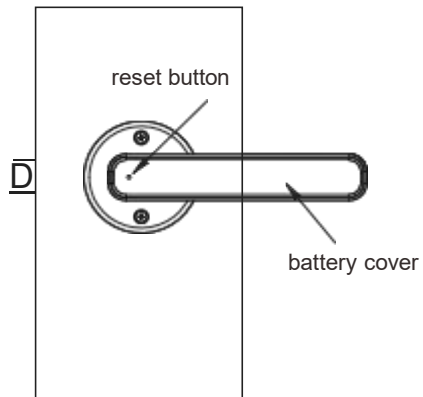
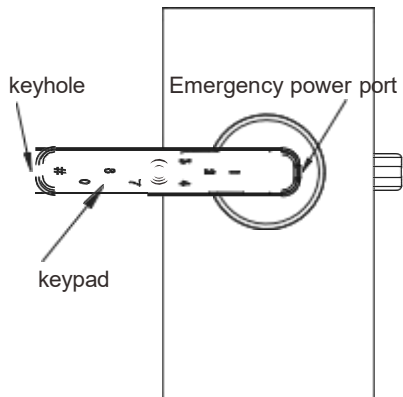


Step 10

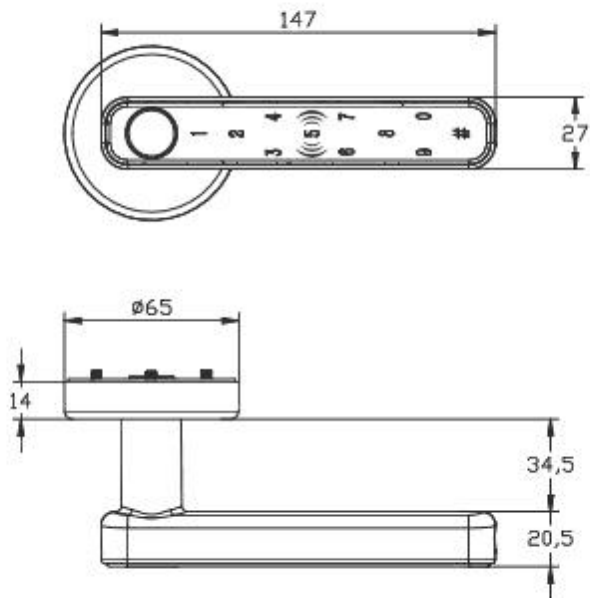
PRODUCT OVERVIEW

Front level

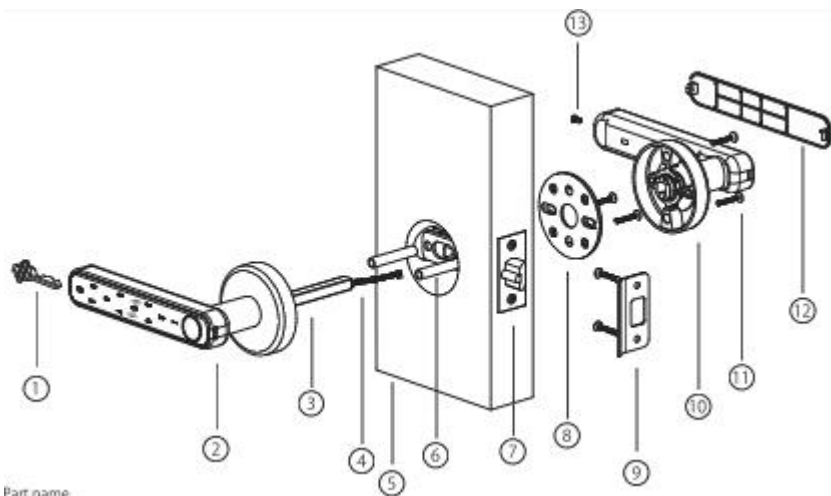
Back level



PRODUCT DIMENSIONS



EXPLOSIVE VIEW

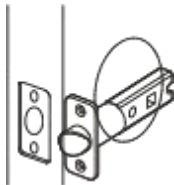


Part name

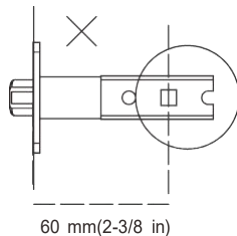
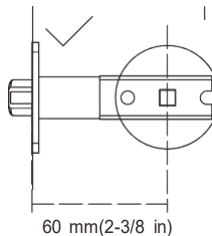
- | | | | | | | |
|------------------|---------------|---------------|----------|-----------------|---------------------------|---------|
| ① Key | ② Front level | ③ Spindle | ④ Cable | ⑤ Door | ⑥ bushings | ⑦ latch |
| ⑧ Mounting plate | ⑨ striker | ⑩ black level | ⑪ Screws | ⑫ Battery cover | ⑬ Battery cover fix screw | |

1 Adjust The Backset of Latch (if Needed)

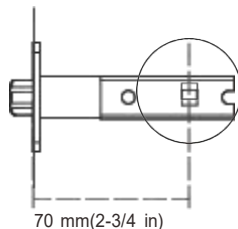
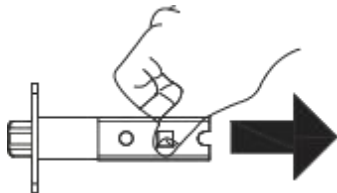
- A** Hold the latch in front of the door hole with the latch face flush against the door edge.



- B** If the latch holes are centered in the door hole, no adjustment is required. proceed to step 2 If the latch holes are NOT centered, adjust latch. see "Latch Adjustment".



- C** Latch adjustment (only if needed)

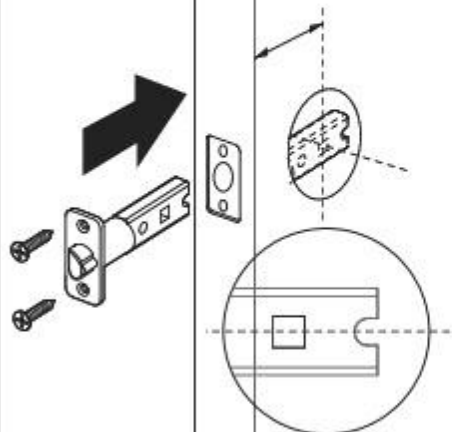


2

Install Latch

A

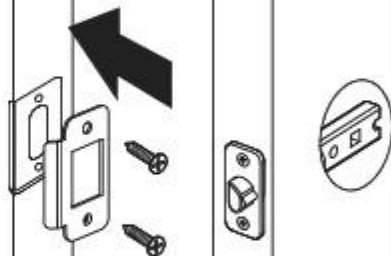
inside



Note,
The square hole
must be horizontal

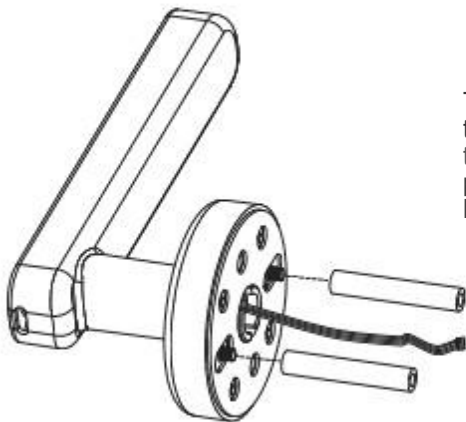
B

inside



3

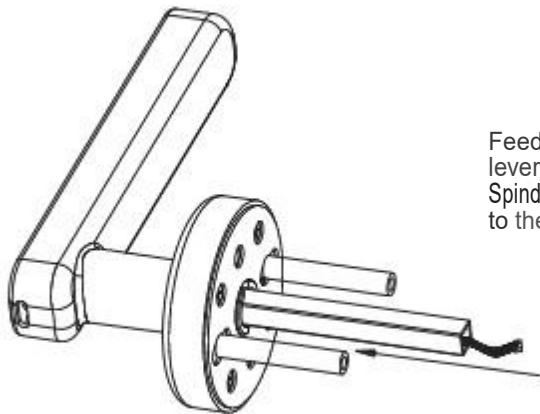
Screw 2 bushings onto the 2 threaded posts



Take the outside lever (with the touch pad). Screw 2 bushings onto the 2 threaded posts (in the horizontal position same orientation as the lever handle).

4

feed the cable completely through the hollow spindle

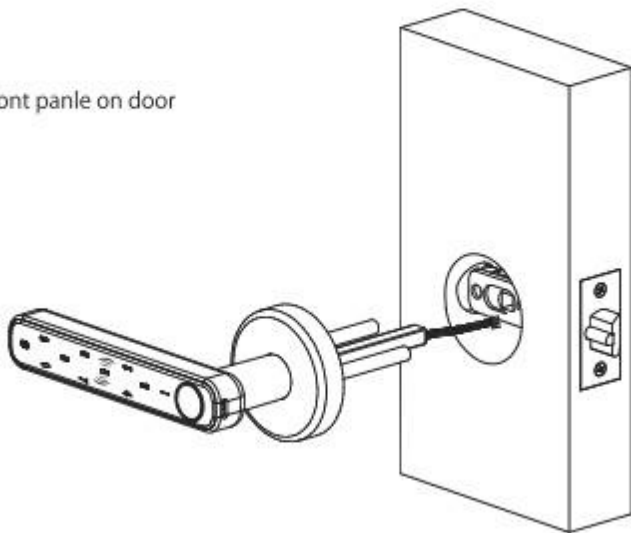


Feed the cable (pre-wired to outside lever) completely through the hollow Spindle. Be careful to avoid any damage to the tip of cable)

5

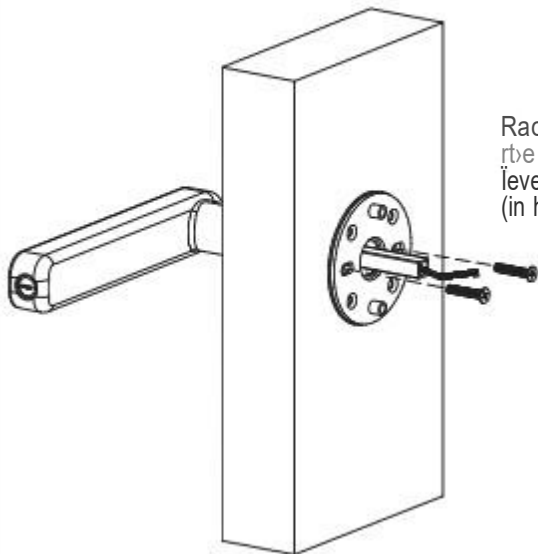
Install front panle on door

Install front panle on door



6

Attach to the outside lever to mounting plate

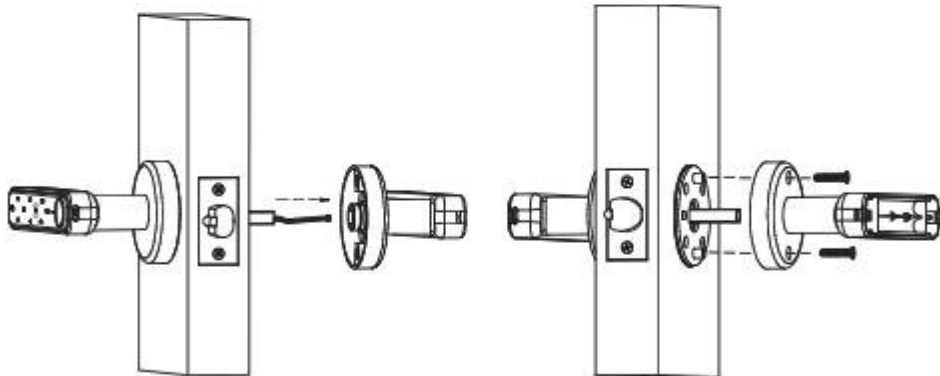


Place the mounting plate on the INSIDE of the pre-bored door and attach the outside lever using 2 X M6 screws to the bushings (in horizontal position)

7

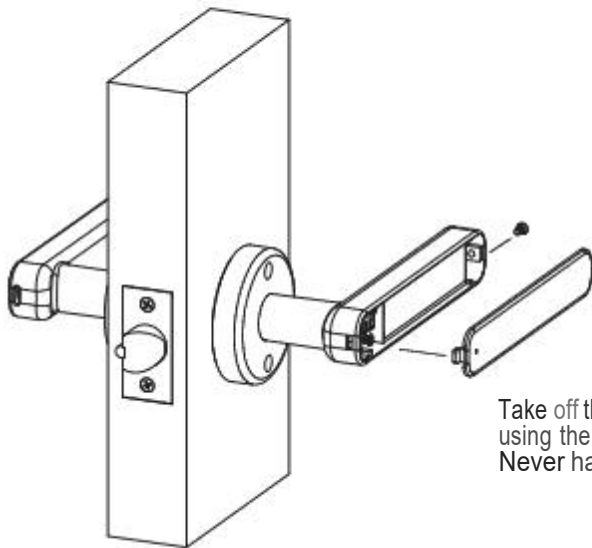
Attach the inside lever to the mounting plate

Attach the inside lever to the mounting plate using two small screws (in vertical position)



8

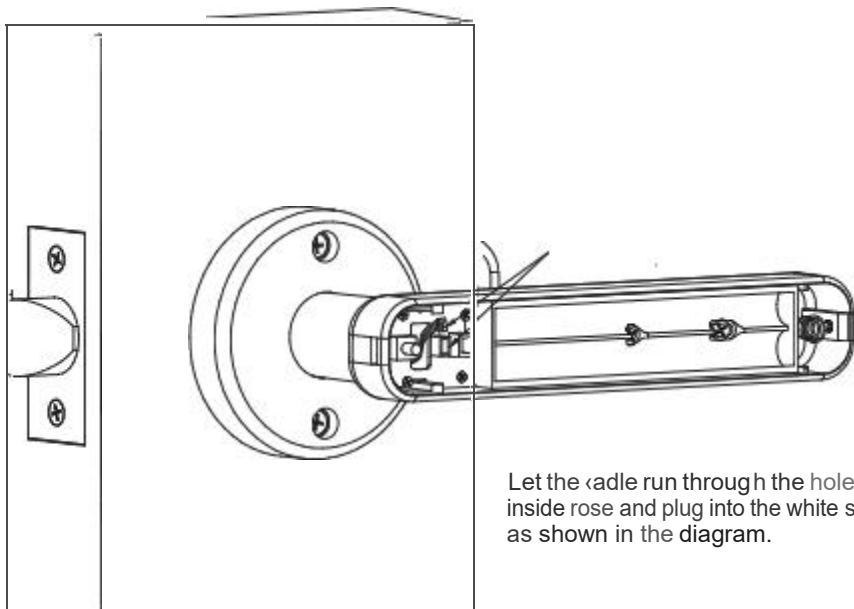
Take off the battery cover



Take off the battery cover (inside lever)
using the small strews at the end of the
Never handle

9

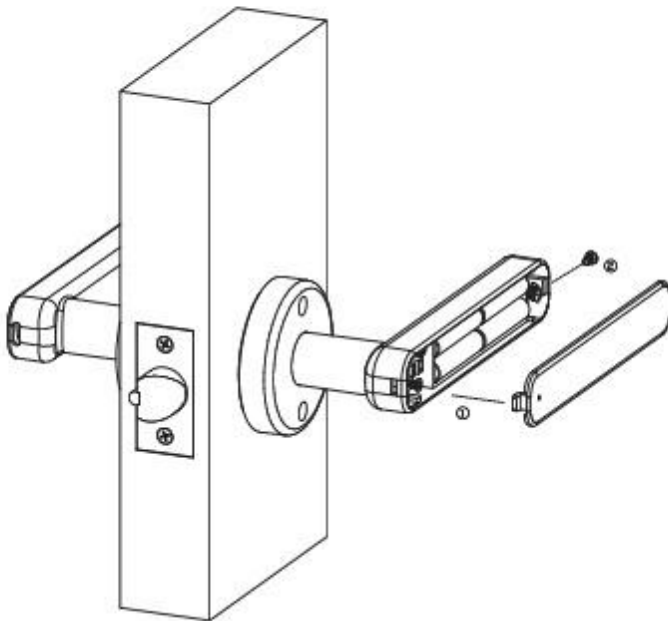
Plug cable into the white socket



Let the cable run through the hole of the inside rose and plug into the white socket as shown in the diagram.

10

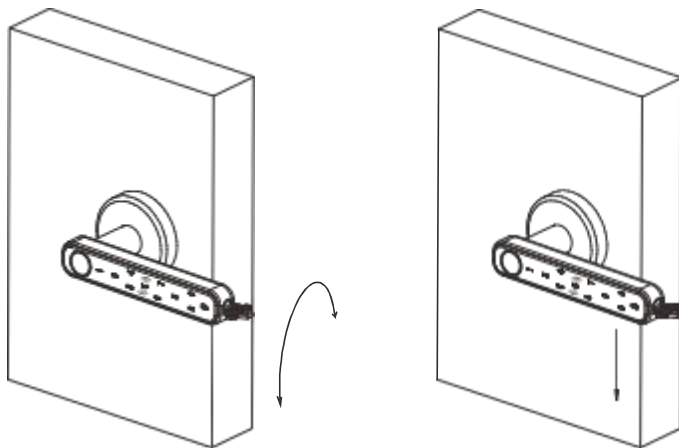
Insert 4 AAA batteries and place the cover plate back on.



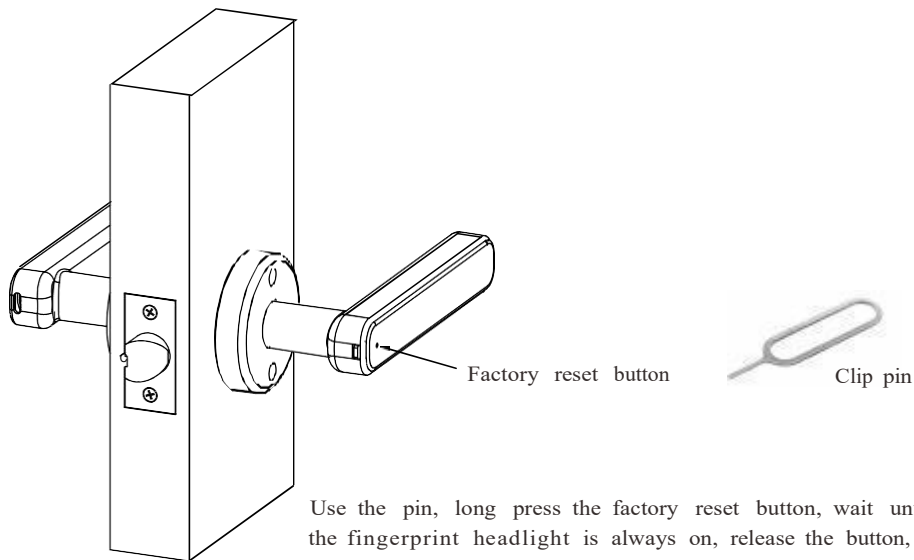
11

Test lock by key and default passcode

1. Insert the key and turn 90 degree
2. Turn handle to open



Note: Default passcode: 12345678#



Use the pin, long press the factory reset button, wait until the fingerprint headlight is always on, release the button, the fingerprint head lights up green, and a long "Di" sounds, the factory reset is successful.

Local operation by Tuya

(It is recommended for users to primarily operate with the Tuya APP)

Note: Admin password: Only one admin password can be set locally.

Before networking with the Tuya APP, after adding a password locally, the Bluetooth turns off.

Adding a mobile APP requires operating in network mode.

1. Enter the following specific passwords for various local operations on the lock:

Setting admin password: Enter "1+#" in the initial state -> 12345678# -> Enter new password# -> Enter new password again# (Fingerprint sensor green light flashes, "long beep ", admin password successfully set, initial password automatically invalid) .

Setting regular users: "1+# " -> Verify admin password -> Enter fingerprint, password, card.

"2+# " -> Verify admin password -> Switch to always open mode.

"3+# " -> Verify admin password -> Switch voice control.

"5+# " -> Verify admin password -> Request to network.

"8+# " -> Verify admin password -> Restore to factory settings.

2. Network operation process:

Note: The lock 's low-power Bluetooth broadcast will automatically turn on when it is in factory settings or restored to factory settings, or after the APP is unbound. Before networking with the Tuya APP,After adding a password locally, Bluetooth automatically turns off. To add a mobile APP, local operation is required in network mode.

Operation process: Enter "5+#" on the lock side to enter the network status of the lock, the indicator light flashes. At this time, the user starts the Tuya APP on the mobile phone, and through the APP scans the device, confirms the connection, and the network is successfully set up.

3. Remote control addition(Remote control options)

Note: You must add the door lock to the mobile APP before you can use it.

1. Add the remote control: 6+# -> Verify administrator code -> Add remote control

long press the lock off button until the blue light flashes and then let go, and the remote control is as close to the door lock as possible.

2. Remote control removal: 7+# -> Verify administrator code -> Remove the remote control

3. The remote control itself is factory reset: press and hold the unlock button until the blue and red lights flash alternately, and then press the off button.

4. Factory Reset:

The lock end is generally equipped with a factory reset key, and long pressing the factory reset button will clear all the users who have been entered and restore to the factory condition; It is the default to clear the remote control (if the lock plate supports remote control function)



Tuya Smart APP

Scan the QR code to download the Tuya APP
or search for the Tuya APP in the app market



Voice control

Two voice platforms have been launched



Google Assistant

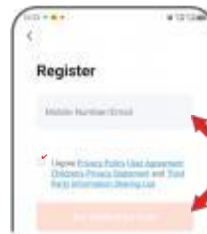
Amazon Alexa

Registration and Login

After opening the APP, enter the login interface, and users who have not yet registered log in immediately after registration. Support registration with mobile phone number/email, and support verification code and code login. Turn on the relevant permissions for the APP in the mobile phone settings to use.



Step 1:
Click here to register




Step 2:
Fill in your mobile phone
number or email address
and click Get verification code



Step 3:
Enter the verification code
Complete the registration

Add a Device

The mobile phone system needs to enable Bluetooth and positioning functions. The first time you enter the home page without adding a smart lock, you can directly click the "Add Device" button, (or click the  key in the upper right corner to add a device) to discover the door lock device in network configuration mode, and then add the device and edit the information.



Step 1:
Click Add device



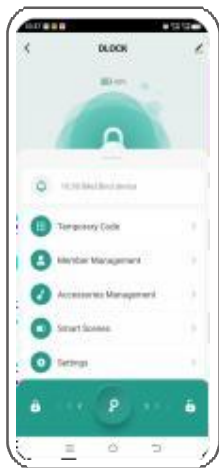
Step 1:
Click Add device



[Add Success]

Introduction to Door Lock Functions

Select the corresponding door lock device on the "Home" interface to enter the door lock function page.



[Door Lock Management]



Unlocking records

Unlocking records



Temporary code

Aging code generation for temporary use



Member management

Add or remove member information, add member fingerprints, codes, and cards



Accessories management



Intelligent application

intelligent linkage, door lock alarm abnormal



Setting

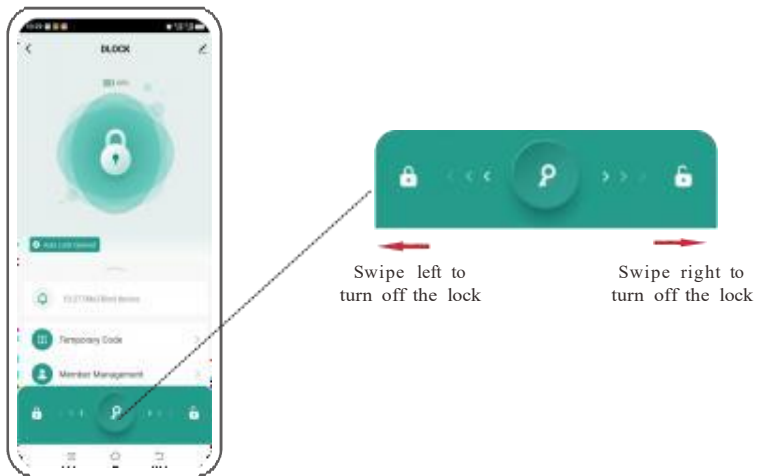
Automatic locking, door lock volume, voice setting, etc. can be set



Switch lock

Tap Slide to switch the lock on and off

Switch Lock



* Note: This function can only be used within the range of the door lock connecting to Bluetooth.

Unlocking Records



[Message Entry]

Click the Message option to
enter the message log



[Message Log]

Displays the alarm message
and operation record of the lock

Temporary Code

Obtain a temporary code, which is of the "dynamic" type, valid for 5 minutes, and can be used multiple times before expiration.



Step 1:
Click Temporary Code to enter



Step 2:
Click Get Code

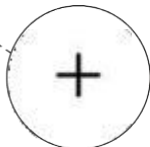


Step 3:

- (1) Save the code and click OK to use
- (2) Click Share to send the code to a friend for use

Member management

Other members can be added to manage and use door locks together, and the member roles include administrators and regular members.



Step 1:
Click the + key to enter



Step 2:
(1) Fill in the member name and account number
(2) Set family roles
(3) Click Save



[Add Success]
View member information,
edit information

Member Management/Add Fingerprints

In "Member Management", you can enter the member function page according to the operation authority of the role, and manage the fingerprint, code, card, and time limit of the member.



Step 1:
Click Member Information
to enter



Step 3:
Click Start after adding
Place the same finger in the fingerprint
recognition area and enter it 4 times

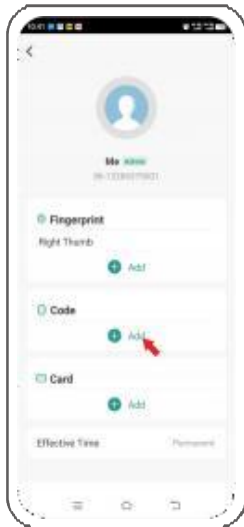


Step 2:
Select Add fingerprint



Step 4:
Fill in the fingerprint name
Click OK

Member Management/Add Codes



Step 1: [Add Code]
Select Add code information



Step 2: [Add Code]
Enter your code and name
and click Save

Members Management/Add Cards



Step 1: [Add Code]
Select Add card information



Step 2:
Click Start adding
Place the card in the door lock
sensing area recognition added

Home Management

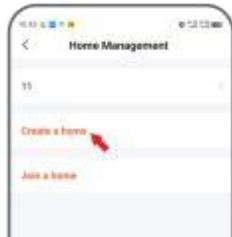
In the "My" interface, you can enter the "Home Management" option to create, join, modify, and delete home units.



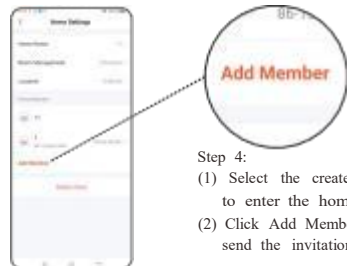
Step 1:
Click Home Management
to enter



Step 3:
Fill in the name, location,
room information
Click Save

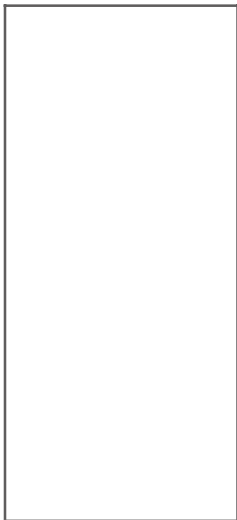


Step 2:
Click Create a new home
or Join a home



- Step 4:
 - (1) Select the created home to enter the home settings
 - (2) Click Add Member to send the invitation

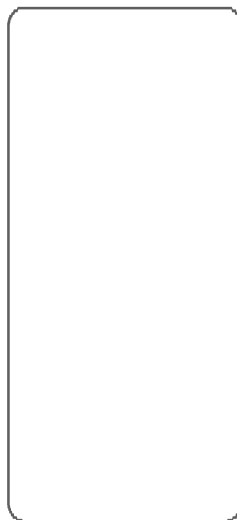
Smart Applications



[Smart Linkage]

Can be turned on or off,
family home information,
door lock alarm

Setting



[Smart Linkage]

It can be used to set automatic locking,
door lock volume, door lock language
and other functions

Remove The Door Lock

Door lock information can be removed, unbound and data cleared



Step 1:
Click here to enter the
Remove Interface



Step 3:
Unbind and clear data



Step 2:
Click Remove device

FCC WARNING

This device complies with part 15 of the FCC Rules. Operation is subject to the following two conditions: (1) this device may not cause harmful interference

e, and (2) this device must accept any interference received, including interference that may cause undesired operation. Any changes or modifications not expressly approved by the party responsible for compliance could void the user's authority to operate the equipment. NOTE: This equipment has been tested and found to comply with the limits for a Class B digital device, pursuant to Part 15 of the FCC Rules. These limits

are designed to provide reasonable protection against harmful interference in a residential installation. This equipment generates, uses and can radiate radio frequency energy and, if not installed and used in accordance with the instructions, may cause harmful interference to radio communications. However, there is no guarantee that interference will not occur in a particular installation. If this equipment does cause harmful interference to radio or television reception, which can be determined by turning the equipment off and on, the user is encouraged to try to correct the interference by one or more of the following measures:

-- Reorient or relocate the receiving antenna.

-- Increase the separation between the equipment and receiver.

-- Connect the equipment into an outlet on a circuit different from that to which the receiver is connected.

-- Consult the dealer or an experienced radio/TV technician for help.

To maintain compliance with FCC's RF Exposure guidelines, This equipment should be installed and operated with minimum 20cm distance between the radiator and your body: Use only the supplied antenna.