



PICTURE LIGHT INSTRUCTION

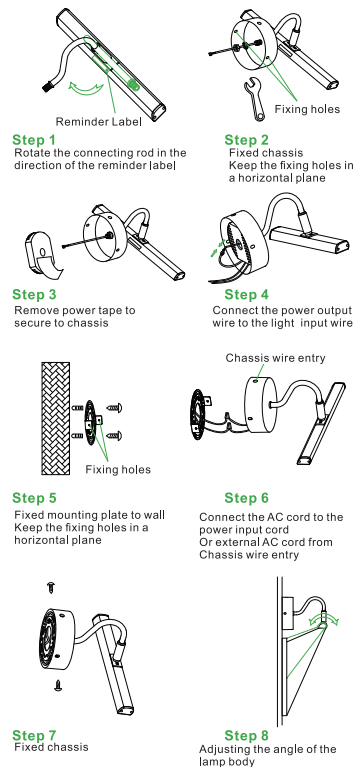
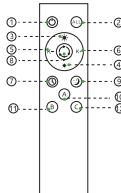
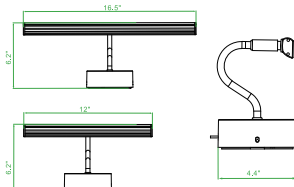
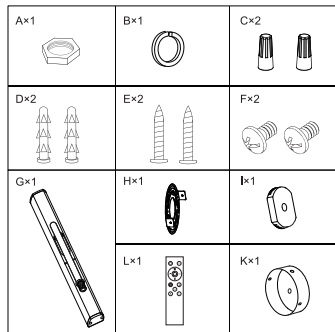
Email
Service@denlead.com



FCCID: 2BK50-YL-PL-RH-15BA

"This device complies with part 15 of the FCC Rules. Operation is subject to the following two conditions: (1) This device may not cause harmful interference, and (2) this device must accept any interference received, including interference that may cause undesired operation."

MADE IN CHINA



SPECIFICATION

| | | |
|-------------------|-----------------------|------------|
| SIZE | 12" | 16.5" |
| POWER | 12W | 15W |
| Luminous Flux | 1000LM±10% | 1200LM±10% |
| Name | Picture Light | |
| Material | Metal | |
| Dimmable | Yes (5%-100% dimming) | |
| Color Temperature | 2700-6500K | |
| Input Voltage | 100-240VAC 50/60 Hz | |
| Protection class | IP20 | |

REMOTE CONTROL

The Remote distance is within 25ft (7.62 m).

| | | | |
|---|----------------------------|----|-------------------|
| 1 | ON/OFF | 7 | 30min/60min-Timer |
| 2 | A+ Group | 8 | 3000K/4000K/6000K |
| 3 | Increase Brightness | 9 | Night light mode |
| 4 | Reduce Brightness | 10 | A Group |
| 5 | Reduce color temperature | 11 | B Group |
| 6 | Increase color temperature | 12 | C Group |

WARNING

- Read the instructions before using the picture light.
- To ensure long life, keep the picture light away from humid, hot or corrosive environments.
- On receipt of the picture light, check that it has not been damaged in transit. Report any problems directly to us at Service@denlead.com.
- Do not disassemble or repair the lamp unless you are qualified to do so by local regulations.
- Use at the correct voltage.
- Do not use frayed or damaged cables.
- Do not touch electrical equipment with wet hands and keep away from liquids.
- Use only the supplied power supply.
- Please disconnect the power supply when not in use.
- Clean only with a dry cloth, do not use solvents or cleaning solutions.
- Do not use if over voltage.

How to match the remote control with the light:

- The remote control should be equipped with AAA batteries.
 - Turn off the picture light.
 - Keep long press the A key or B key or C key more than 3 seconds, and turn on the picture light.
 - If the light flickers, it indicates that the match is successful. The remote control can be used now.
- Tip: When the remote control cannot control the light, please power off 5 times in a row to clear the match code, and then return to step 1 above.

WARRANTY

Warranty is provided by the seller of this device please contact your reseller for more information regarding the local warranty regulations.

DECLARATION

Manufacturer / Importer certifies that the following designated product

Product Identification

Product Name: PICTURE LIGHT
Model No.: YL-PL-RH-15BA
Manufacturer: Shenzhen Denlead E-commerce Co.,Ltd
Manufacture Address: 8th Floor, Building C, Central Avenue, West Side of Xixiang Avenue, Bao'an District, Shenzhen, China

is in conformity with the standard(s)

Test Standard Information

FCC PART 15 SUBPART B
FCC Rule Parts: 15.231
ANSI C 63.4:2014

under the Council Directive

Directive Name / Number

This device complies with part 15 of the FCC Rules. Operation is subject to the following two conditions:
(1) This device may not cause harmful interference, and
(2) this device must accept any interference received, including interference that may cause undesired operation.

The declaration is the sole responsibility of the manufacturer / importer

Identification of the Manufacturer

Company: Shenzhen Denlead E-commerce Co.,Ltd
Address: 8th Floor, Building C, Central Avenue, West Side of Xixiang Avenue, Bao'an District, Shenzhen, China
Representative: Simon.Liang
Email: Service@denlead.com

Authorised signatory: <signed by the person authorised by the manufacturer>

Signature

28/01/2024
Date

Simon.Liang Quality Manager Shenzhen Denlead E-commerce Co.,Ltd

Any changes or modifications not expressly approved by the party responsible for compliance could void the user's authority to operate the equipment.
NOTE: This equipment has been tested and found to comply with the limits for a Class B digital device, pursuant to Part 15 of the FCC Rules. These limits are designed to provide reasonable protection against harmful interference in a residential installation. This equipment generates, uses and can radiate radio frequency energy and, if not installed and used in accordance with the instructions, may cause harmful interference to radio communications. However, there is no guarantee that interference will not occur in a particular installation.
If this equipment does cause harmful interference to radio or television reception, which can be determined by turning the equipment off and on, the user is encouraged to try to correct the interference by one or more of the following measures:
- Reorient or relocate the receiving antenna.
- Increase the separation between the equipment and receiver.
- Connect the equipment into an outlet on a circuit different from that to which the receiver is connected.
- Consult the dealer or an experienced radio/TV technician for help.
The device has been evaluated to meet general RF exposure requirement. The device can be used in portable exposure condition without restriction



PICTURE LIGHT INSTRUCTION

Email
Service@denlead.com



FCC ID: 2BK50-YL-PL-RH-15BA

"This device complies with part 15 of the FCC Rules. Operation is subject to the following two conditions: (1) This device may not cause harmful interference, and (2) this device must accept any interference received, including interference that may cause undesired operation."

MADE IN CHINA