

YI XING

Solar Powered Camera VCS09

User Manual

Search for "V380 Pro" in the APP Store or scan the QR code below to download and install the V380 Pro APP.



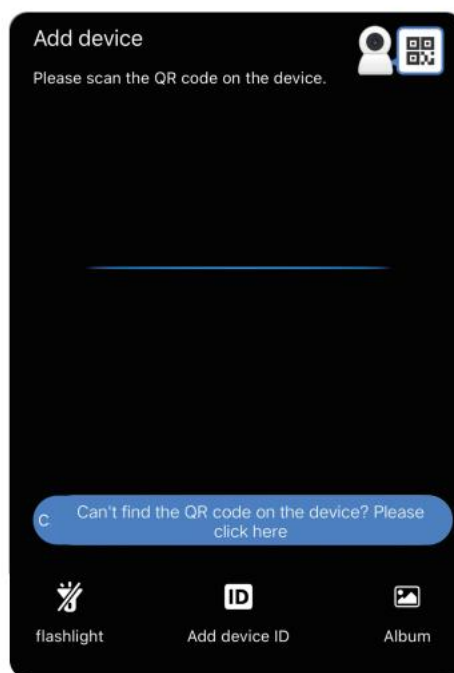
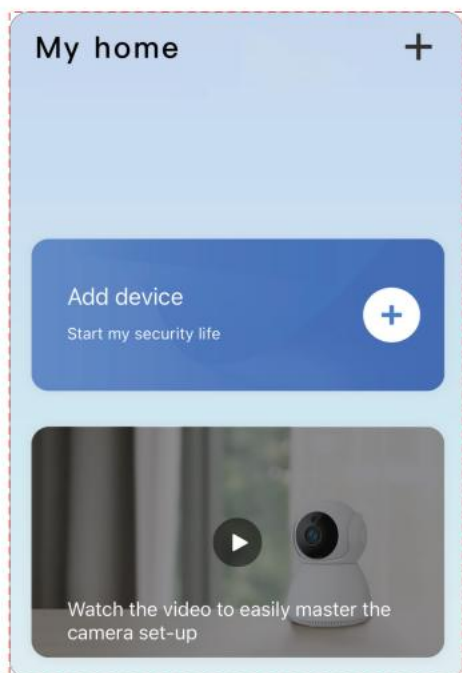
Scan the QR code to download the V380 Pro APP

Electronic manual

Use the V380 Pro APP to scan the QR code on the camera to add the device and follow the instructions to view the electronic manual of the device.

Add camera

1. Open APP to register your account and log in.
2. Click the "+" icon and scan the QR code on the device.



Note: Each APP version may be different, please follow the prompts in the latest version of APP to set up the camera.

After scanning the QR code on the device, please select the corresponding network configuration method according to your network configuration interface.

Wi-Fi

1. QR code network connection.
2. WIFI network connection.
3. AAP hotspot connection.

Solar-powered camera indicator light

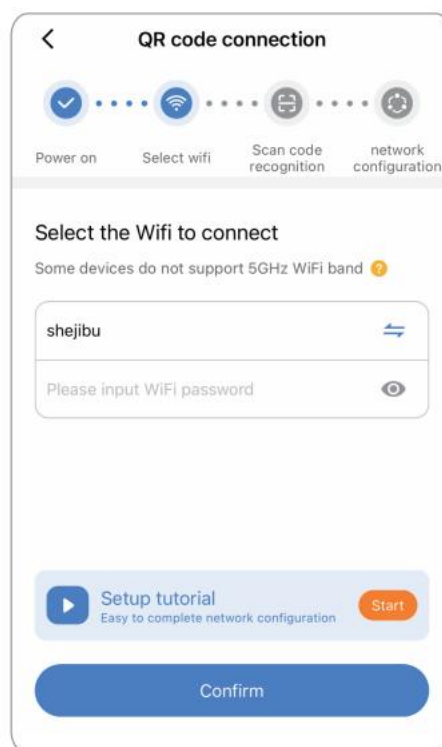
Wi-Fi camera

1. Indicator is off: device is powered off or standby mode,
2. Slow flashing red light: device is ready for connecting,
3. Quick flashing red light: device is connecting to the router,
4. Solid yellow light: device has been connected to the Internet;
5. Flashing yellow light: device is connecting to the Internet.

If the device cannot connect to the Internet normally, please check whether the router can access the Internet normally.

QR code network connection

1. Please select the Wi-Fi that the device needs to connect to, and enter the correct password.



Note: The device only supports 2.4GHz Wi-Fi. Please select Wi-Fi without "5G". The name of Wi-Fi should not contain special symbols.

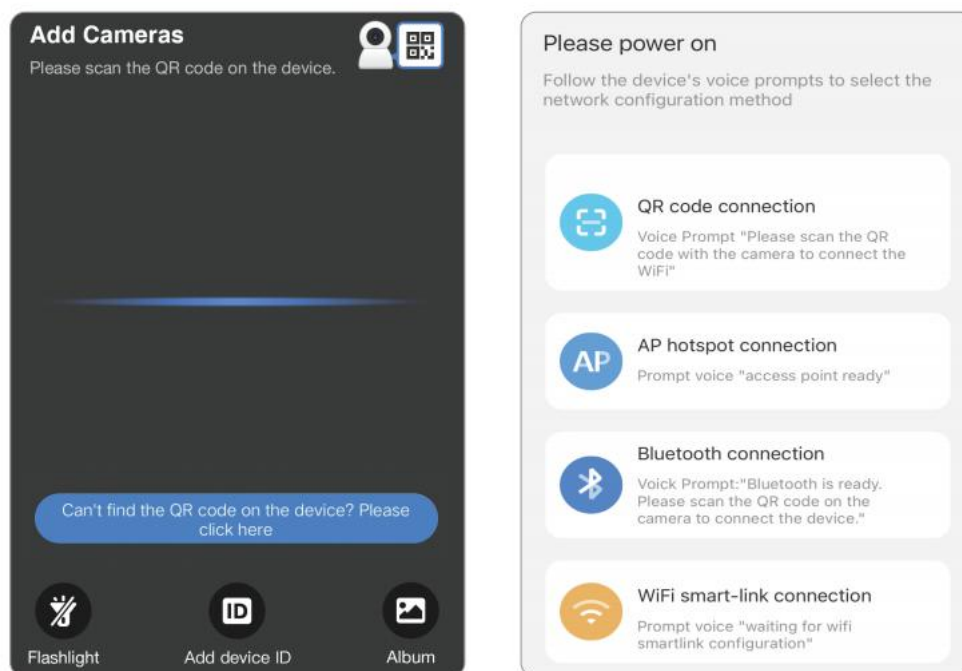
2. The APP will generate the QR code and then use camera to scan this QR code
3. After the camera identifies the QR code successfully, it will prompt "Received configuration information". Click "I have heard the tone" in the APP after hearing that tone.
4. After the connection completed, it will prompt "Network connected"

AP hotspot connection

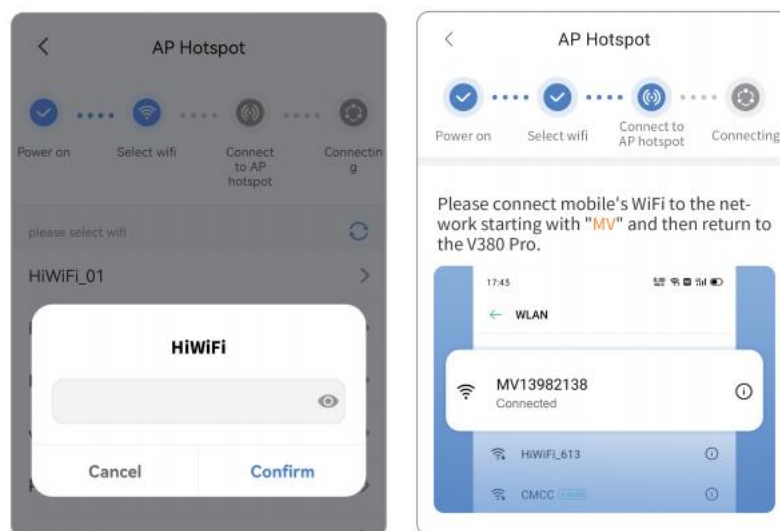
The device also supports the "AP hotspot connection". Please ensure the device has been reset.

1. Click "+" in the upper right corner, select "Can't find the QR code on the device? Please click

here " " Wi-Fi Smart Camera" "AP hotspot connection"



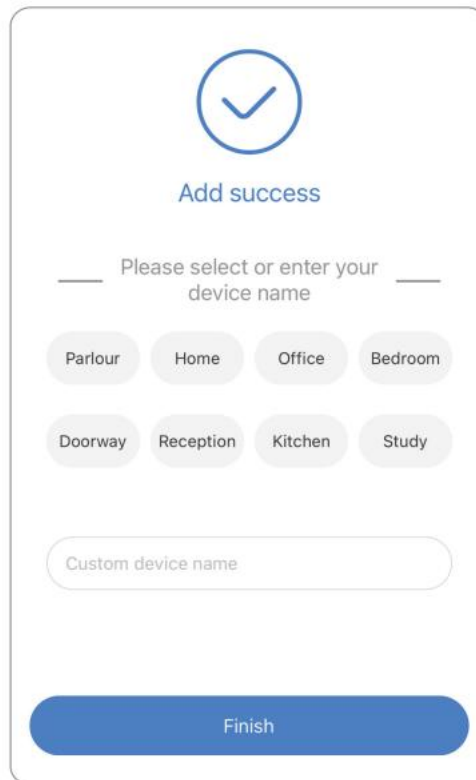
2. Select the Wi-Fi that the device needs to connect to, and enter the correct password (For iOS, if you want to connect to other Wi-Fi, please connect your mobile phone to the Wi-Fi you need and then return to the APP to refresh)
3. Connect to the hotspot of the device based on APP instructions.
4. After the hotspot connection is successful, return to the APP, and the device will automatically connect to Wi-Fi.



Note: You can find the corresponding ID on the device body tag which is for the hotspot's name.
 * Adding completed" is on page 11

Adding completed

After the camera prompts "Network connected", you can create a group for the camera and set the name.



The screenshot shows a mobile application interface for naming a device. At the top, there is a blue circular icon with a white checkmark. Below it, the text "Add success" is displayed in blue. A horizontal line separates this from the next section, which contains the text "Please select or enter your device name". Below this text are two rows of rounded rectangular buttons. The first row contains "Parlour", "Home", "Office", and "Bedroom". The second row contains "Doorway", "Reception", "Kitchen", and "Study". Below these buttons is a text input field with the placeholder text "Custom device name". At the bottom of the screen is a large blue button with the text "Finish" in white.

Federal Communications Commission Notice

This device complies with part 15 of the FCC Rules. Operation is subject to the following two conditions: (1) This device may not cause harmful interference, and (2) this device must accept any interference received, including interference that may cause undesired operation.

Any Changes or modifications not expressly approved by the party responsible for compliance could void the user's authority to operate the equipment.

Note: This equipment has been tested and found to comply with the limits for a Class B digital device, pursuant to part 15 of the FCC Rules. These limits are designed to provide reasonable protection against harmful interference in a residential installation. This equipment generates uses and can radiate radio frequency energy and, if not installed and used in accordance with the instructions, may cause harmful interference to radio communications. However, there is no guarantee that interference will not occur in a particular installation. If this equipment does cause harmful interference to radio or television reception, which can be determined by turning the equipment off and on, the user is encouraged to try to correct the interference by one or more of the following measures:

- Reorient or relocate the receiving antenna.
- Increase the separation between the equipment and receiver.
- Connect the equipment into an outlet on a circuit different from that to which the receiver is connected.

-Consult the dealer or an experienced radio/TV technician for help.

This equipment complies with FCC radiation exposure limits set forth for an uncontrolled environment.

This equipment should be installed and operated with minimum distance 20cm between the radiator&your body.